

REGULATORY ABATEMENT OF ILLICIT ENCAMPMENTS

The Salt Lake County Board of Health
June 3rd, 2021

Dale Keller
Environmental Health Bureau Manager

Fall 2020 Channel 13 Special Report

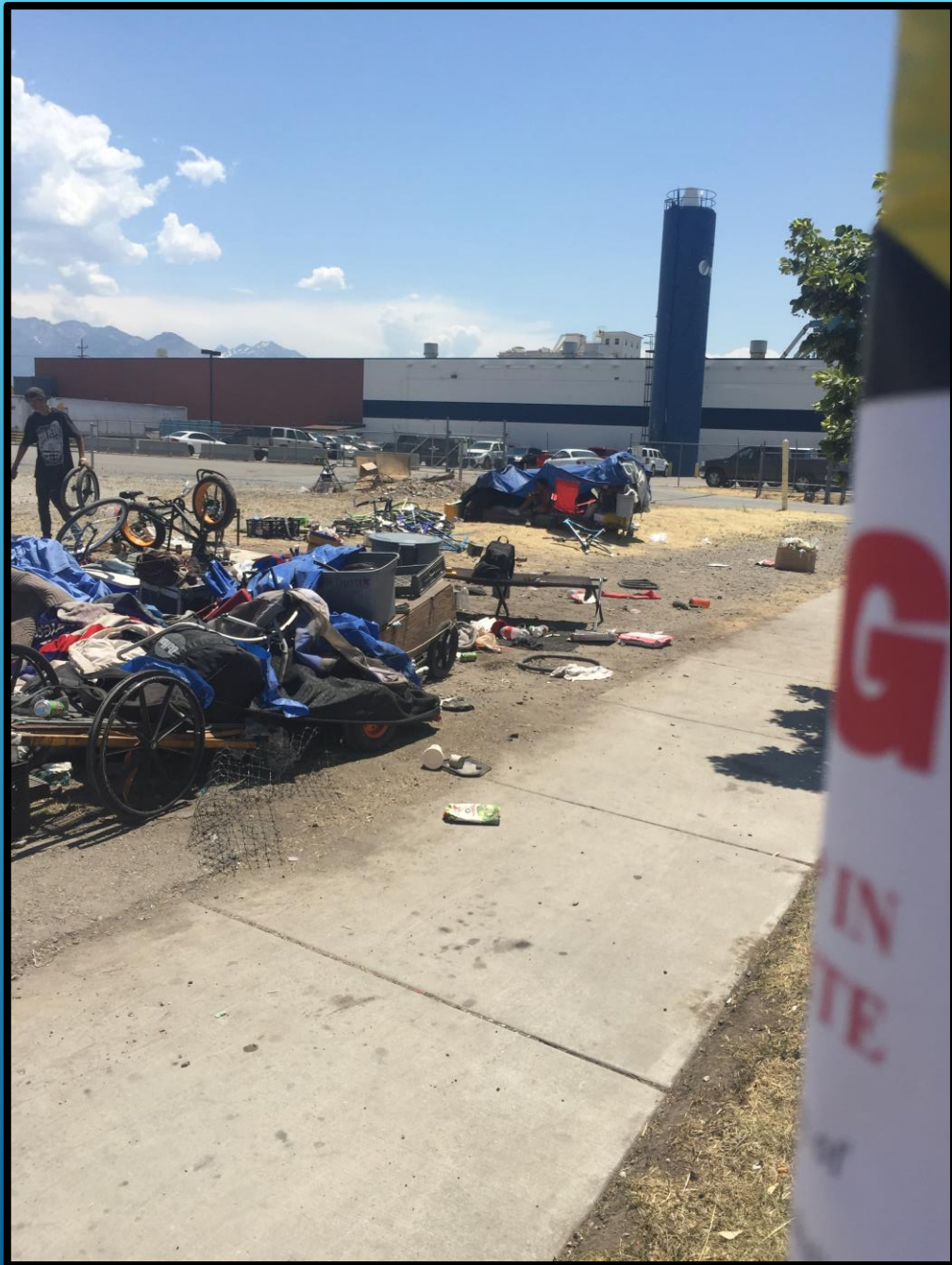


PRE-OPERATION RIO GRANDE 2017



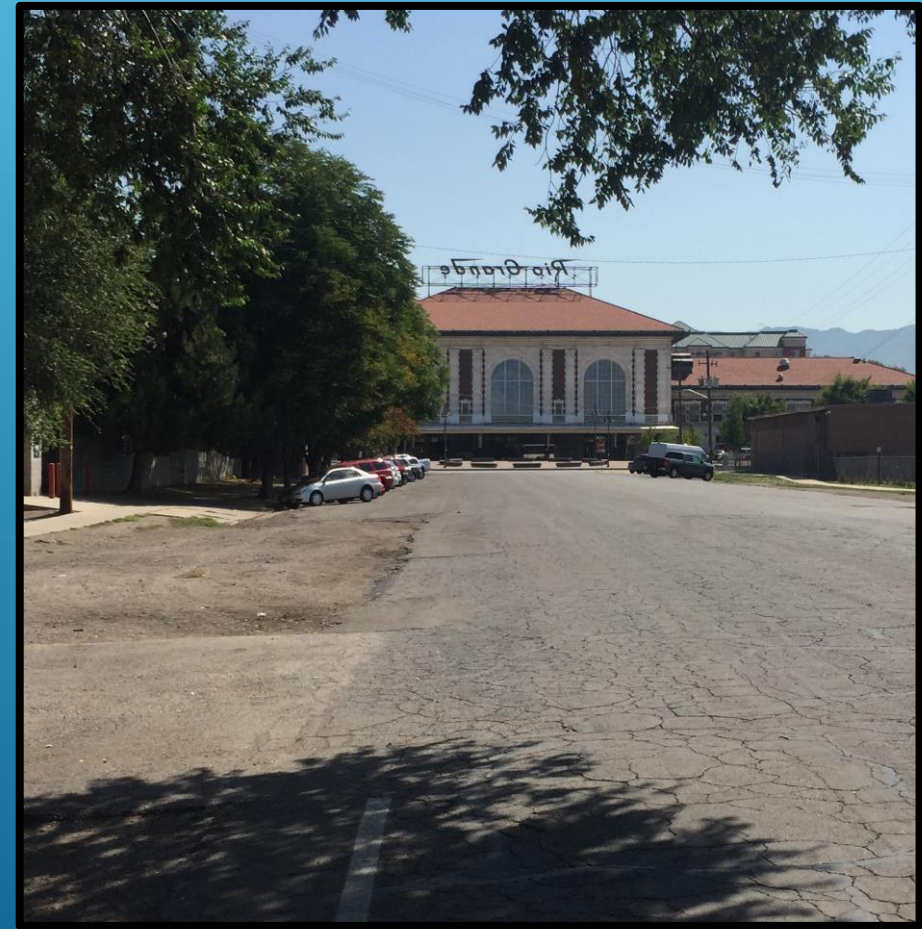
Disease Connected to Illicit Encampments







Rio Grande
Cleaned Up.



Rio Grande 2021







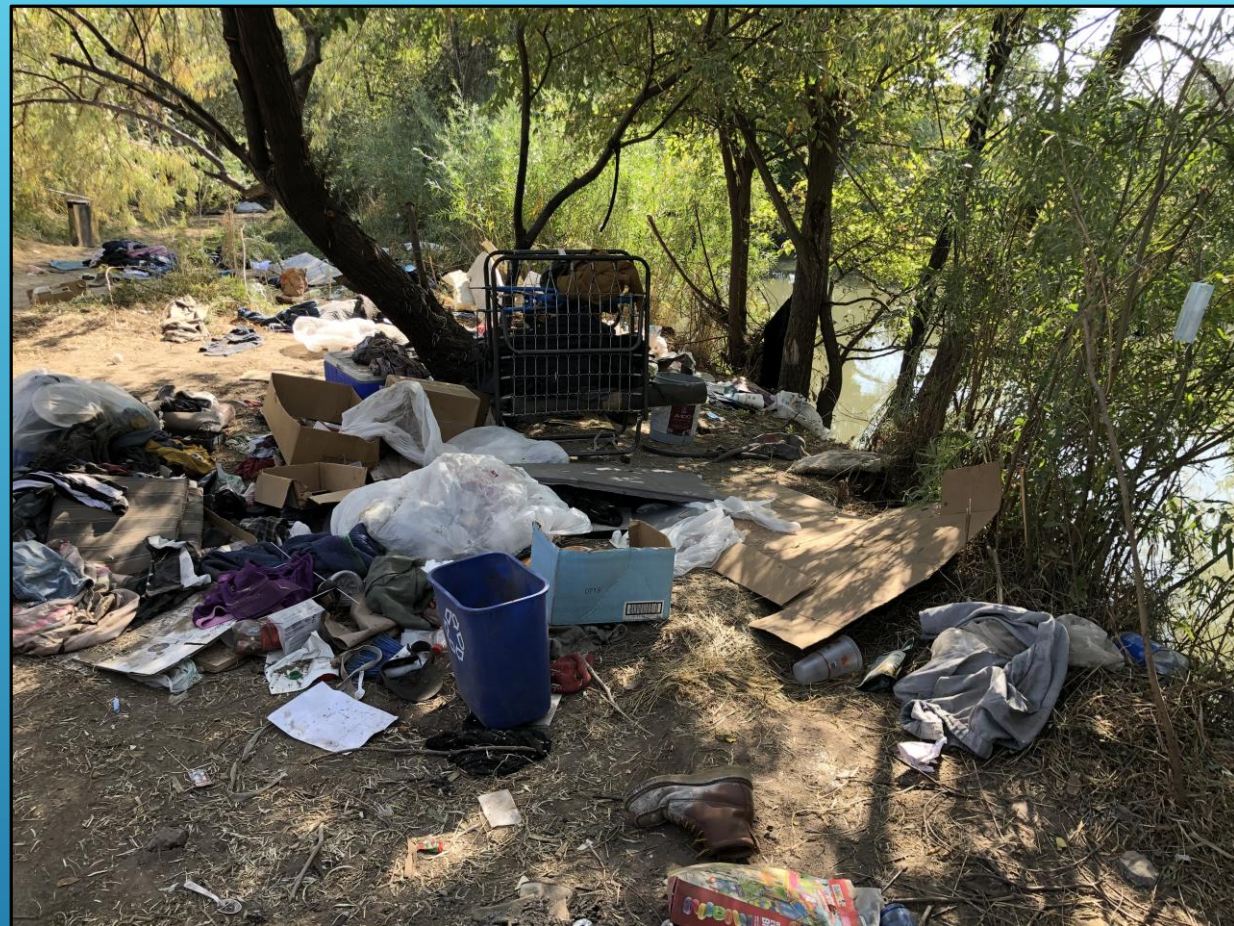


The Jordan River





The Jordan River







RESOURCE RESISTANCE INDIVIDUALS















INOPERABLE RV CAMPS



VICTORY ROAD





3RD PARTY AGITATORS



CALL FOR SUPPORT

10-15-2020

Dale from the Salt Lake County Health Dep. and SLC police are planning on harassing our unsheltered community.

Dale likes to steal people's property while our neighbors are trying to collect it. Be ready to document these violations of due process.

**MEET US ON NORTH TEMPLE
AND 900 W AT 8AM.**



Just Media Utah

7h · 🌐

Meet us on North Temple and 900 W at 8am tomorrow Oct. 15

Dale likes to steal people's property while it's being collected by our neighbors.

Be ready with your camera to document these violations of due process.

#FTP

#AgainstIllegitimateAuthority

#CommunityProtectsCommunity



SWOP SLC @SWOPSLC · 45s

👤👤👤 Salt Lake City! CALL TO ACTION

We've received word that the health department will be conducting a sweep of camps around N Temple and 900 W at 8am tomorrow (Thursday) morning! Please show up for our homeless community!



1



4




3



SWOP SLC @SWOPSLC · 38s

We need folks to: film and capture only police and health dept employees and hold a line. Please keep in mind that hostility can create additional issues for homeless folks, so please do not escalate unnecessarily.

Synopsis

- Status of resource resistant unsheltered population
 - In-migration to Salt Lake County of unsheltered population
 - Third party agitators
 - Health Department involvement with encampment abatements
 - Refuse disposal
 - Health Department focus of public health/environmental health
 - Solutions??
- 
- Several white lines of varying lengths and angles are positioned in the bottom right corner of the slide, creating a modern, abstract graphic element.

Thank you!

Additional comments,
questions, concerns?

Several thin, parallel white lines of varying lengths and orientations are positioned in the bottom right corner of the slide, creating a modern, abstract graphic element.