

# County Council Briefing

December 1, 2020

**David Schuld**

Salt Lake County COVID-19 Response and Recovery Coordinating Officer

# Key Numbers

Key Numbers are for Salt Lake County only. Data presented follows best practices in reporting of epidemiology and present the number from the previous day.

14,605

Current Cases

Decreasing

80,352

Total Cases (Includes Current Cases)

59.60

Daily Case Rate / 100,000

Decreasing

356

Countywide Hospitalizations

Increasing

400

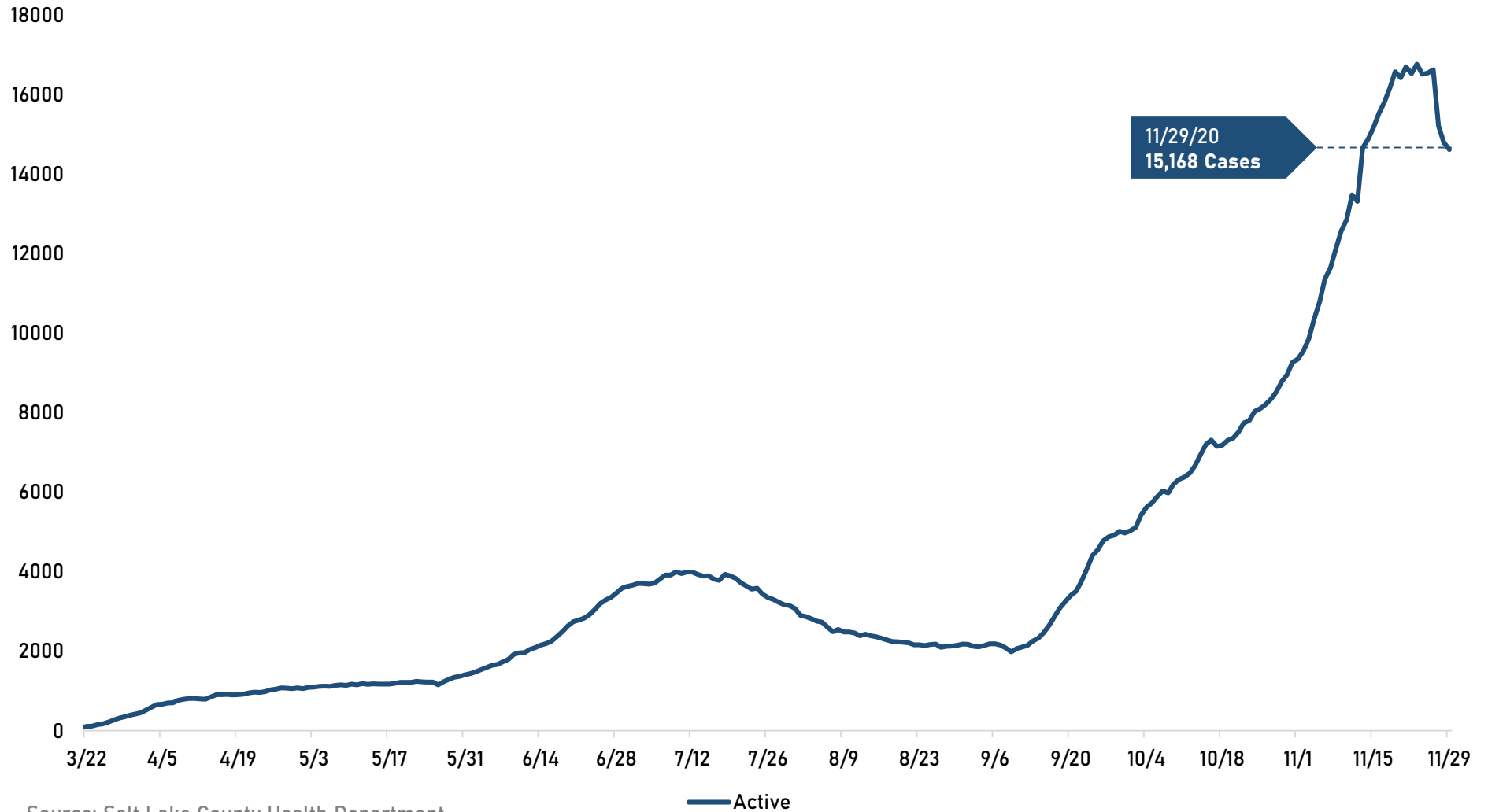
Known COVID-19 Related Deaths

Source: Salt Lake County Health Department, Utah Department of Health

Report from Salt Lake County's COVID-19 Response and Recovery Coordinating Officer

# Active Case Curve

The Active Case Curve articulates the summation of the number of cases of individuals in Salt Lake County whose first positive laboratory test was reported within the last 14 days.



Source: Salt Lake County Health Department

Report from Salt Lake County's COVID-19 Response and Recovery Coordinating Officer

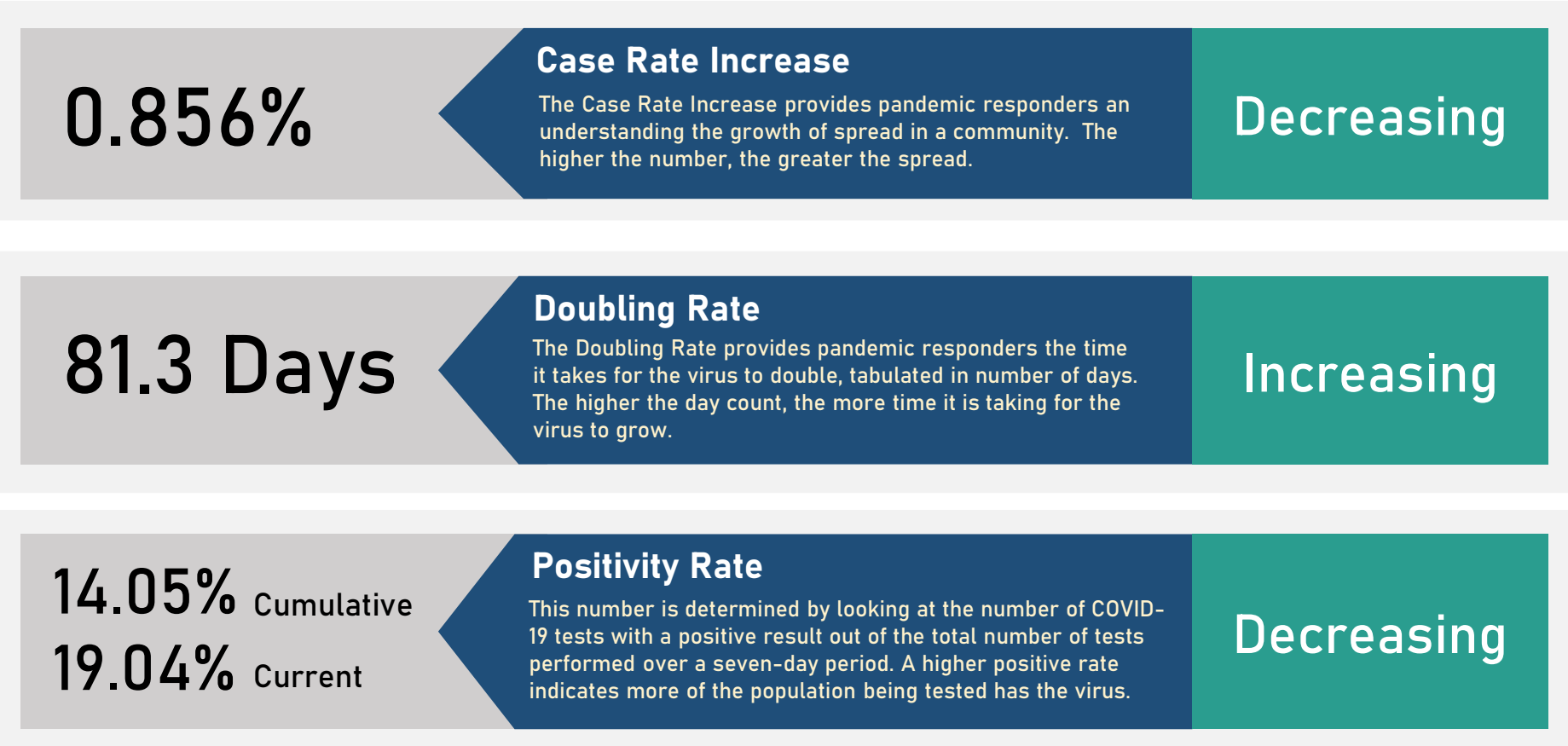


COVID-19

# How and Where COVID-19 is Spreading in Salt Lake County

# Infection Snapshot

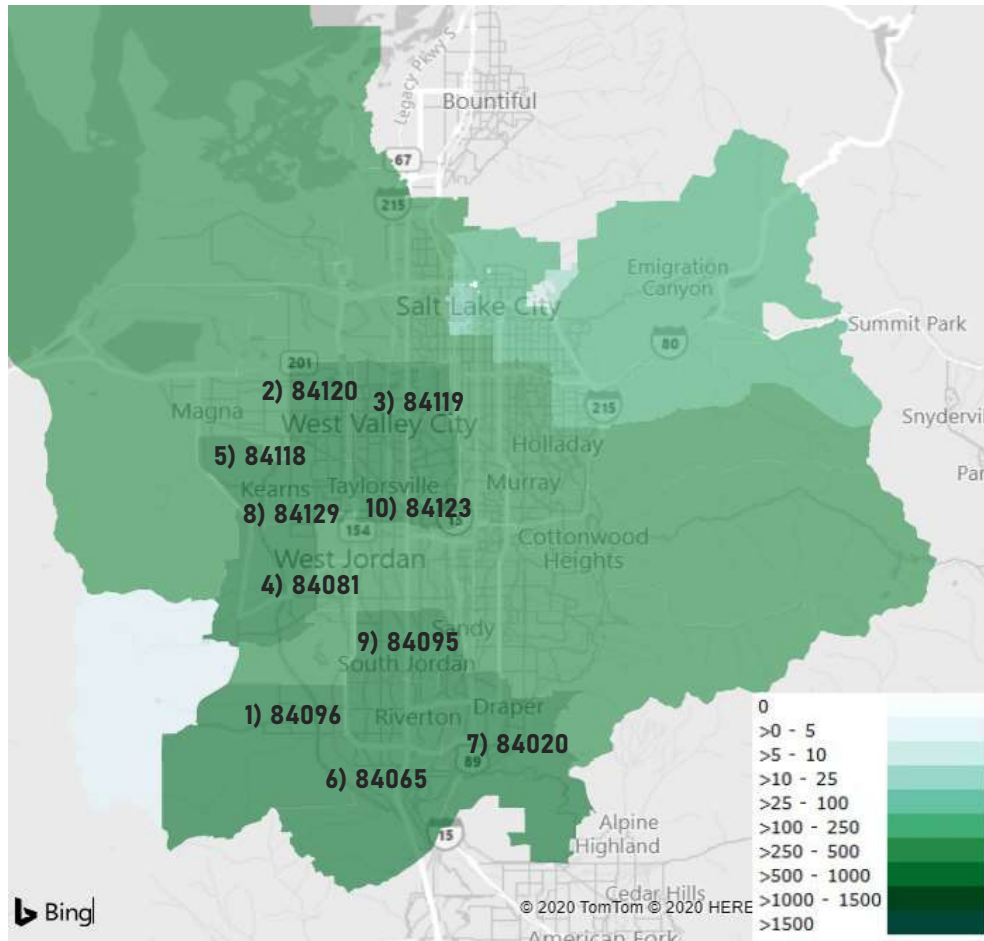
Infection Snapshot is for Salt Lake County only. Data presented follows best practices in reporting of epidemiology and present the number from the previous day.



Source: Salt Lake County Health Department

# ZIP Code Surveillance

Slide provides the current cases (summation of cases for the last 14 days) for the top ten ZIP codes in Salt Lake County.



Rank	ZIP Code	29-Nov
1	84096	807
2	84120	762
3	84119	737
4	84081	707
5	84118	696
6	84065	604
7	84020	566
8	84129	535
9	84095	535
10	84123	507

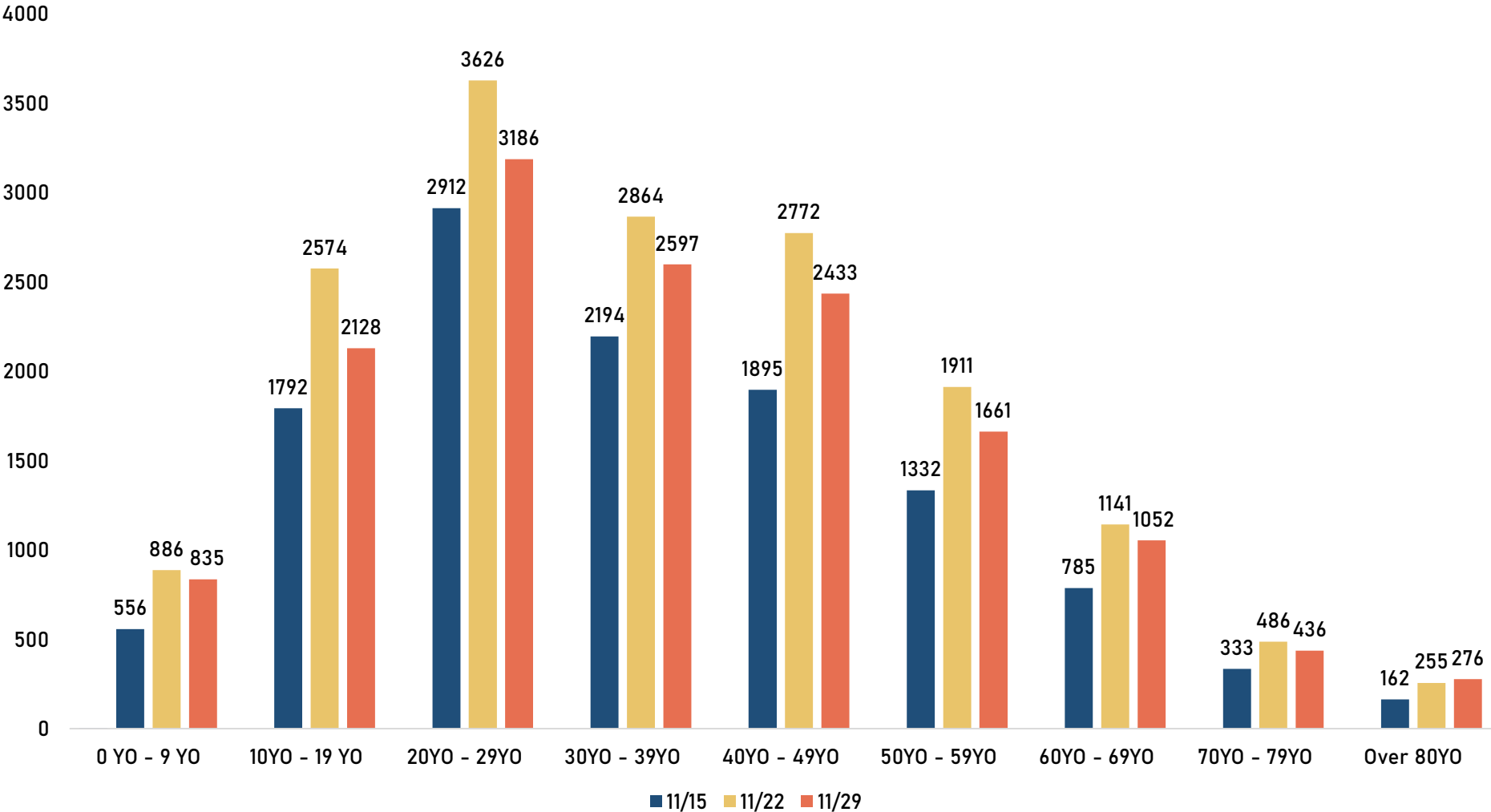
Rank	ZIP Code	22-Nov
1	84096	912
2	84120	866
3	84119	781
4	84118	775
5	84081	768
6	84065	715
7	84020	690
8	84128	574
9	84123	574
10	84095	569

Source: Salt Lake County Health Department

Report from Salt Lake County's COVID-19 Response and Recovery Coordinating Officer

# Current Cases by Age Distribution

Slide provides the current cases (summation of cases for the last 14 days) for age groups (by decade) in Salt Lake County.



Source: Salt Lake County Health Department

# Race and Ethnicity Analysis

Race and Ethnicity Analysis is for Salt Lake County only. Data presented is current cases only (positive tests within the last 14 days).

Race	% Total County Population	Case Count	% of County Cases	Hospitalizations	% of Hospitalizations	Deaths
American Indian of Alaska Native	1.38%	145	0.99%	8	2.63%	0
Asian	4.68%	469	3.21%	11	3.62%	0
Black or African American	2.17%	214	1.47%	6	1.97%	1
Native Hawaiian or Other Pacific Islander	1.77%	453	3.10%	32	10.53%	0
Two or More Races	2.91%	56	0.38%	2	0.66%	0
Unspecified Race		3,353	22.96%	32	10.53%	2
White	88.13%	9,913	67.88%	213	70.07%	7

Ethnicity	% Total County Population	Case Count	% of County Cases	Hospitalizations	% of Hospitalizations	Deaths
Hispanic or Latino	18.14%	4,109	28.16%	74	24.34%	3
Not Hispanic or Latino	79.99%	8,957	61.37%	219	72.04%	7
Unspecified Ethnicity		1,528	10.47%	11	3.62%	0

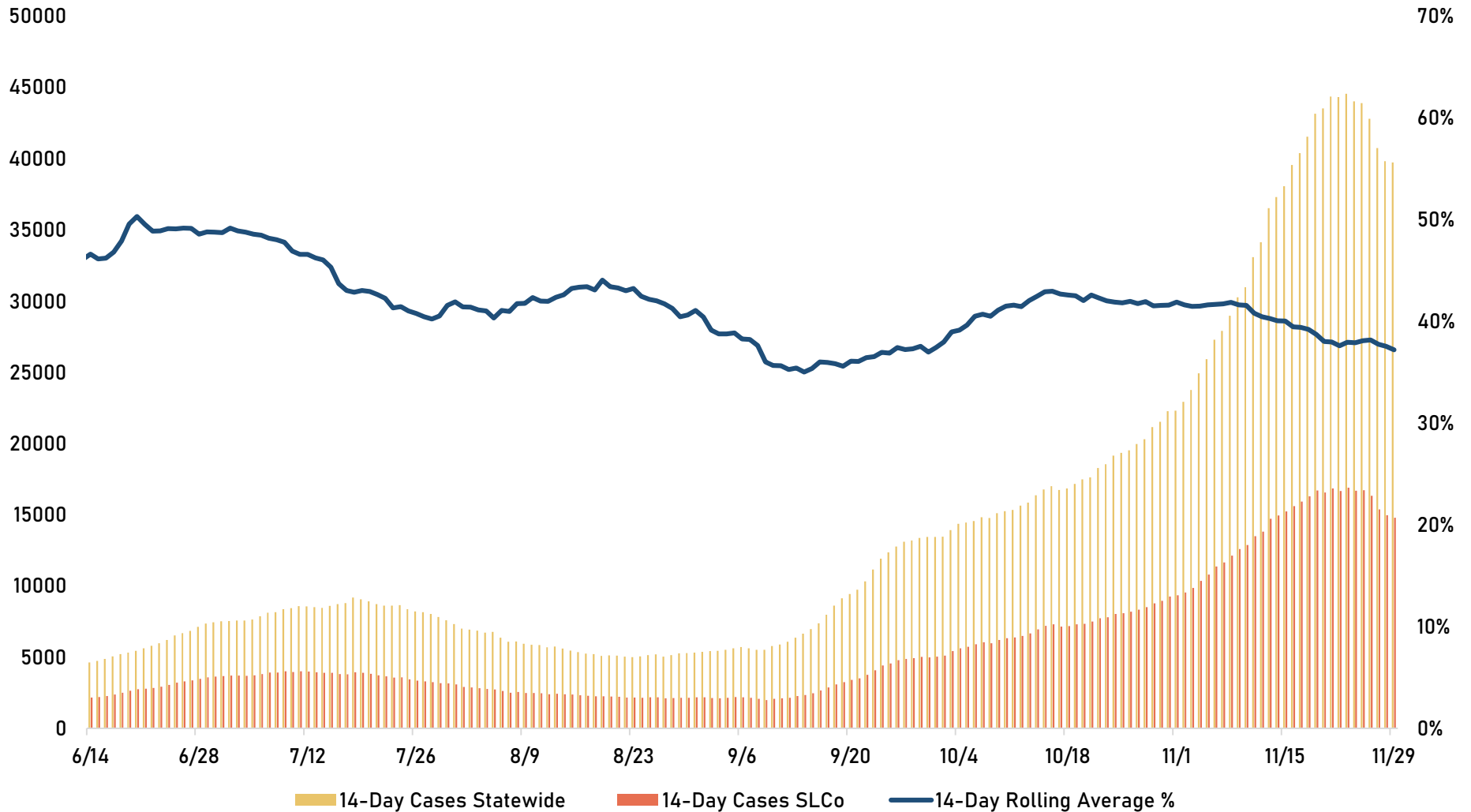
Source: Salt Lake County Health Department

Report from Salt Lake County's COVID-19 Response and Recovery Coordinating Officer



# Rolling 14-Day Comparison

Provides information the rolling 14-day statewide and Salt Lake County case totals. Also included is the statewide percentage of cases for Salt Lake County.



Source: State of Utah Public Dashboard

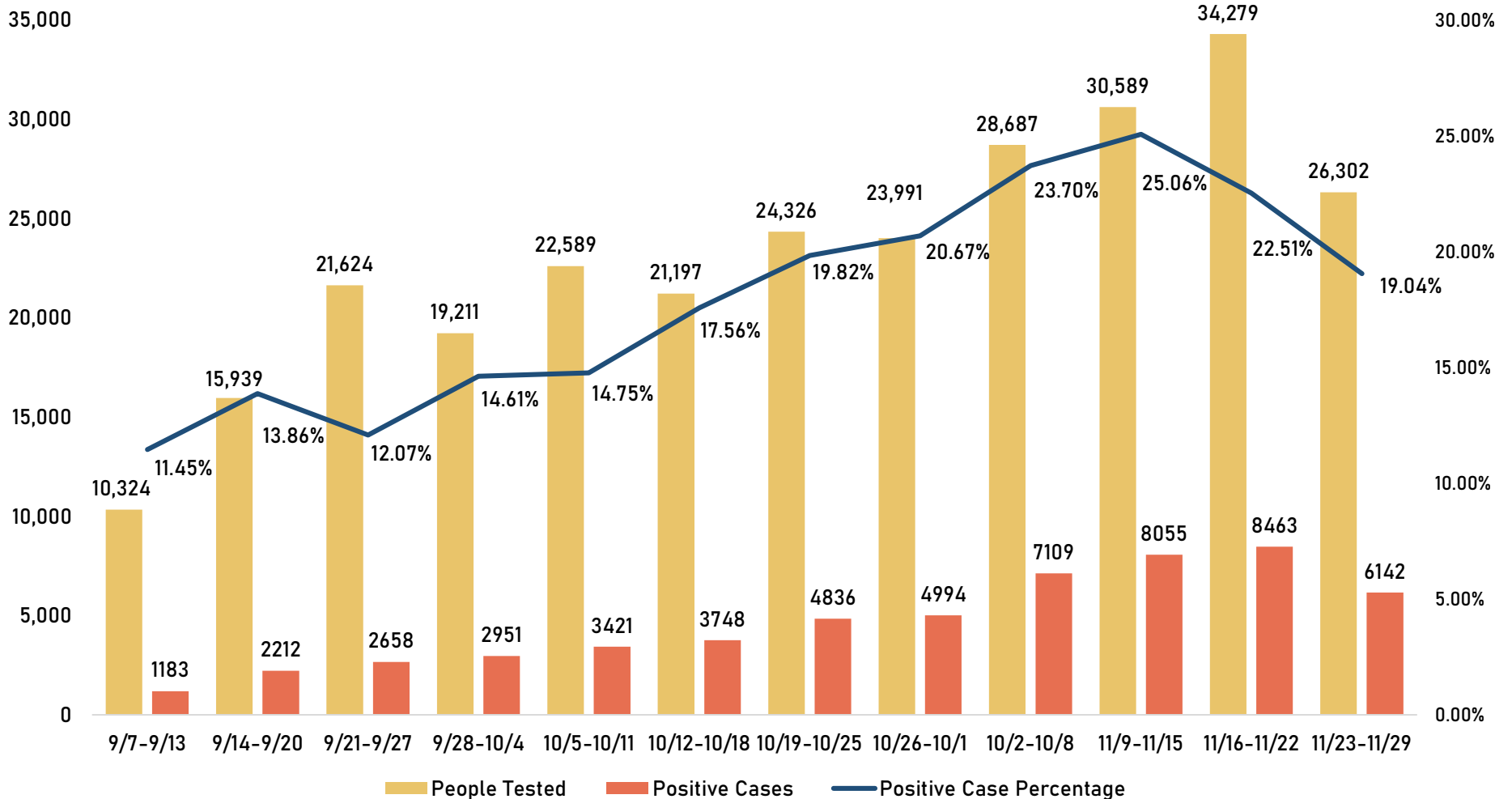
Report from Salt Lake County's COVID-19 Response and Recovery Coordinating Officer



# Key Health Response Indicators

# Testing Analysis

Testing Analysis provides a week-over-week visualization of the number of people tested, number of positive cases, and positive test percentage. Numbers will fluctuate week over week as late reporting is entered into the database.

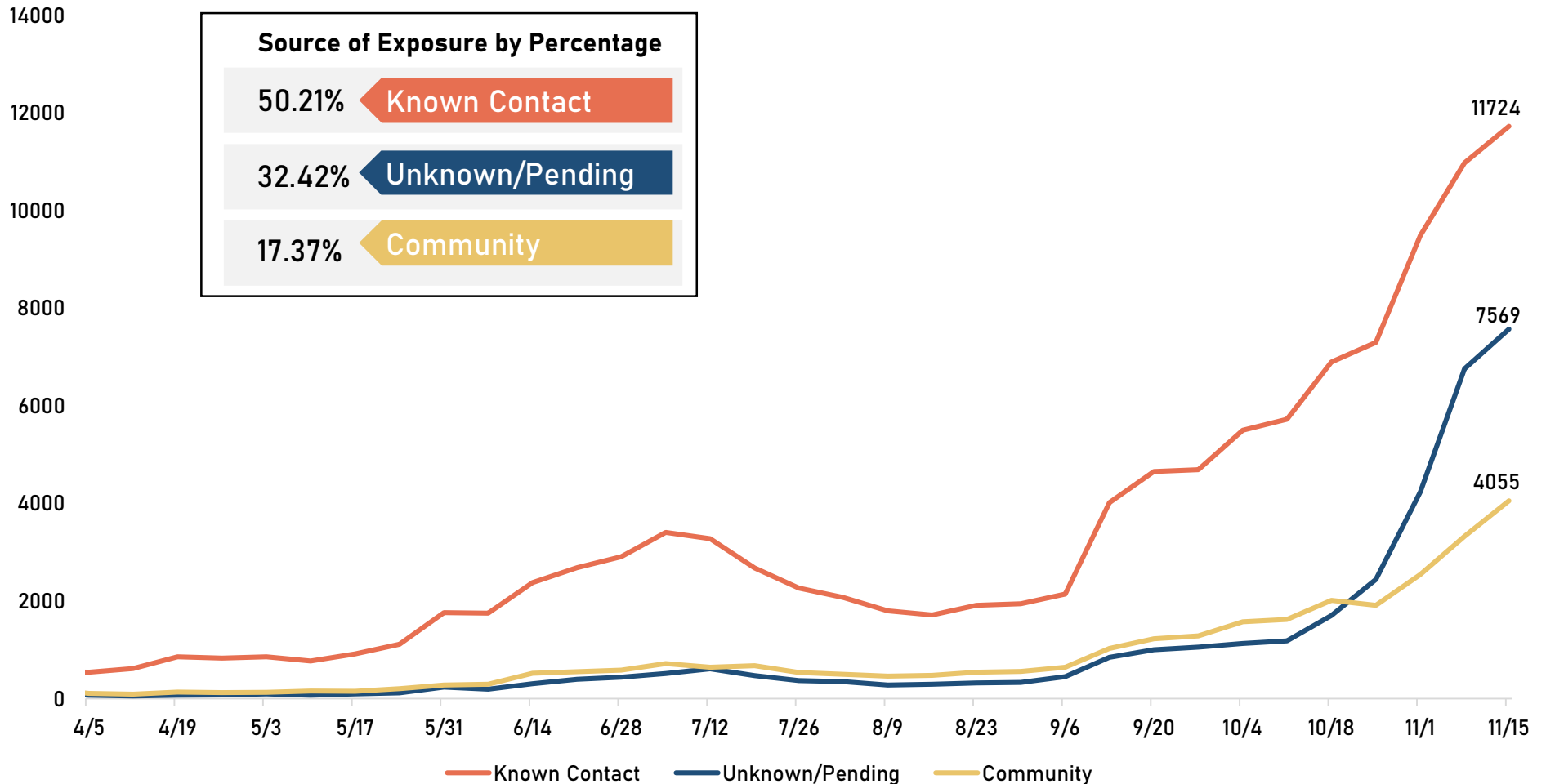


Source: Salt Lake County Health Department

Report from Salt Lake County's COVID-19 Response and Recovery Coordinating Officer

# Known vs Community Cases

Provides information on the source of exposure for positive cases that have undergone tracing investigations. Number of cases identified across state. Cases with known contact vs community are identified by week.

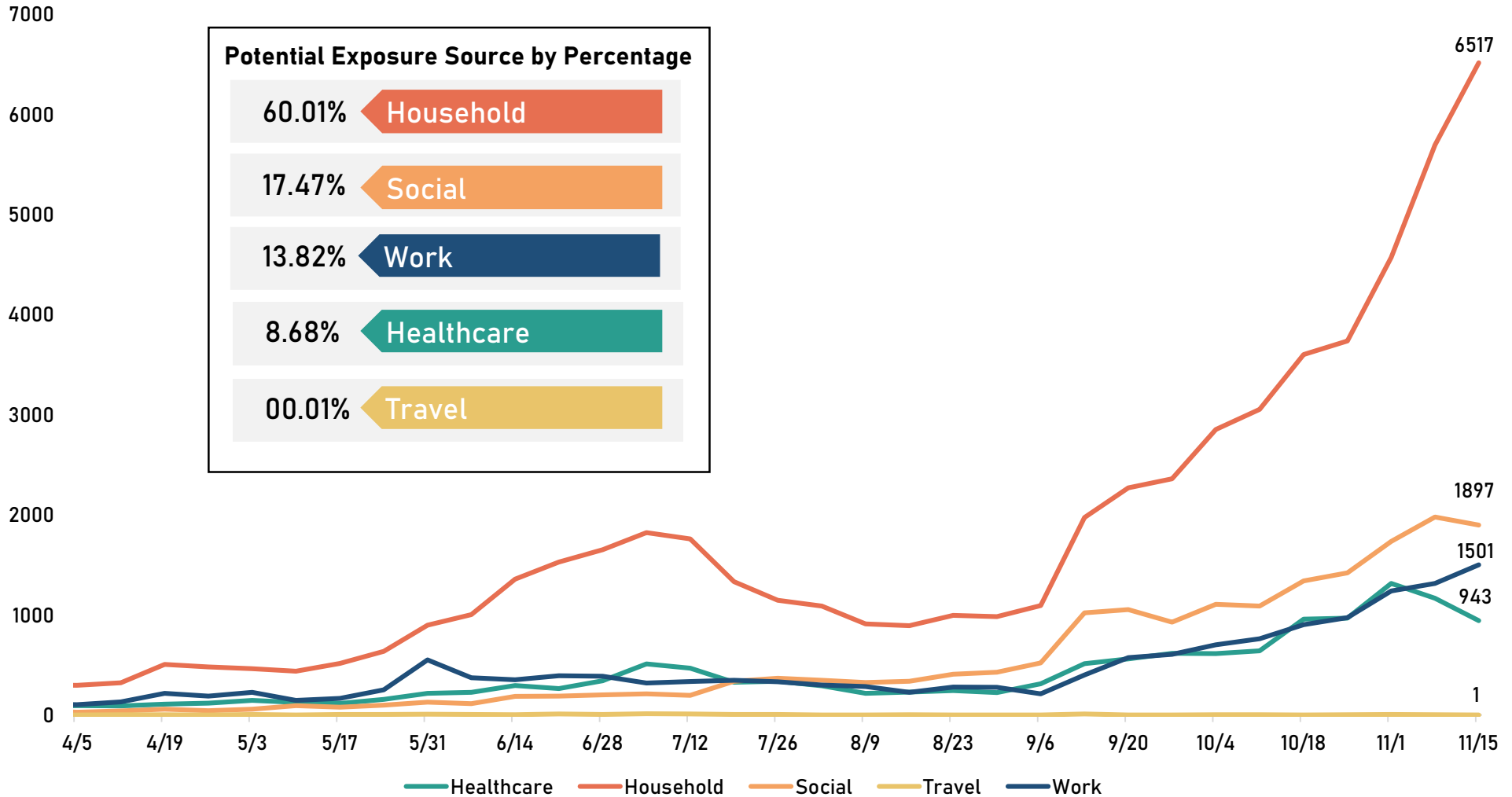


Source: State of Utah

Report from Salt Lake County's COVID-19 Response and Recovery Coordinating Officer

# Potential Exposure Source

Potential exposure source as found out in tracing investigations are broken down in five areas: 1) Household, 2) Social, 3) Travel, 4) Work, and 5) Healthcare. Number of cases identified across state. Cases are identified by week.

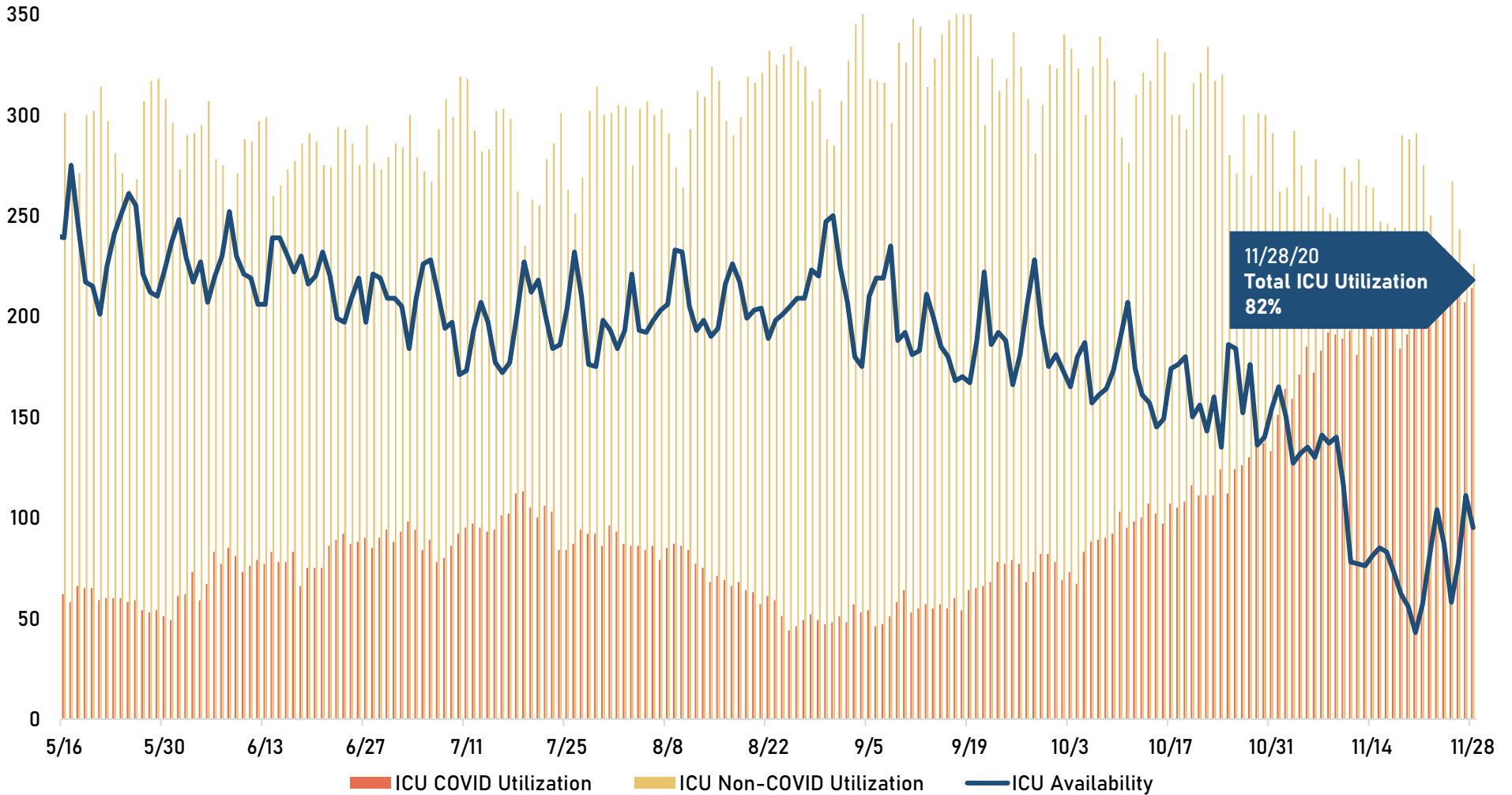


Source: State of Utah

Report from Salt Lake County's COVID-19 Response and Recovery Coordinating Officer

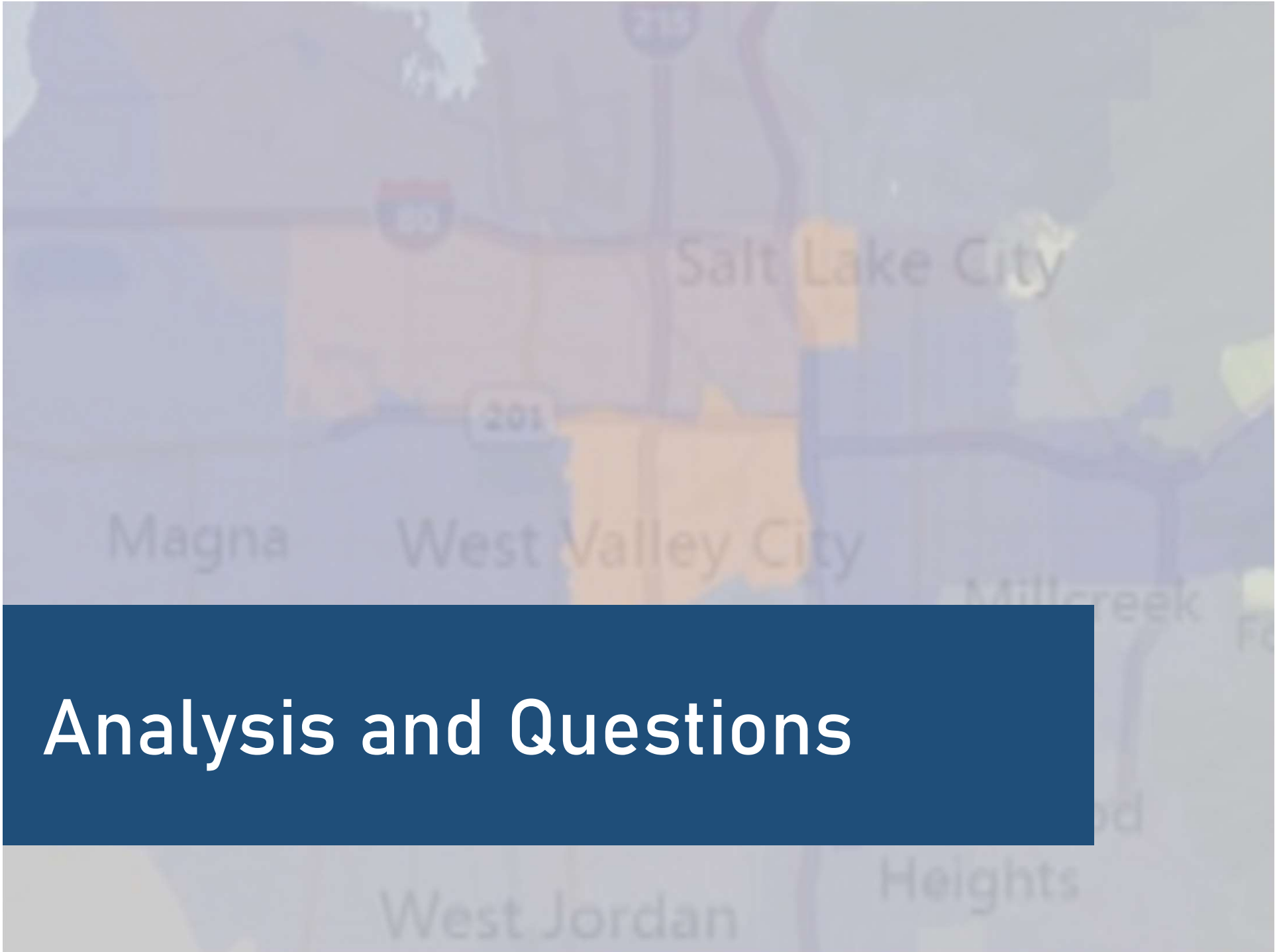
# ICU Utilization

Provides information on ICU COVID utilization, ICU Non-COVID Utilization, and the remaining available ICU bed capacity statewide. ICU utilization is identified daily.



Source: State of Utah.

Report from Salt Lake County's COVID-19 Response and Recovery Coordinating Officer



# Analysis and Questions