



LEADER REPORT

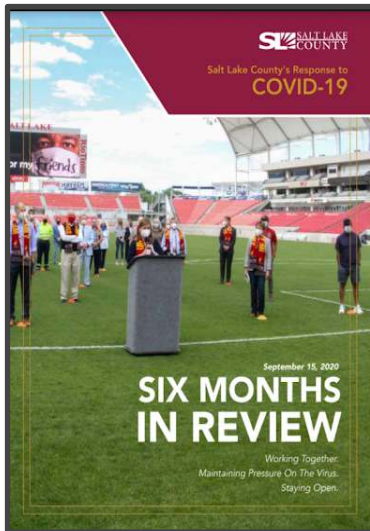
for

September 15, 2020

Provided to Salt Lake County Council every Tuesday.

Priorities for the Week

- Monitor and support schools in Salt Lake County through reopening while mitigating the spread of infection.
- Collect information of the development of the COVID-19 vaccine and prepare for mass vaccination operations.
- Strengthen partnerships across Salt Lake County to mitigate deep impacts of COVID-19 across businesses and communities.



Salt Lake County's Response to COVID-19: Six Months in Review

September 6th marked the six month milestone of Salt Lake County's COVID-19 Response and Recovery. To recognize the extraordinary efforts done by Salt Lake County Government and partners, the Six Months In Review provides readers an understanding how Salt Lake County's COVID-19 Response leaned forward to support residents, businesses, and communities address the emergent and long-term impacts of COVID-19.

The document is broken down into three sections: 1) the health emergency, 2) how Salt Lake County embraced the whole community approach, and 3) how Salt Lake County has developed resiliency to be strong in the future.

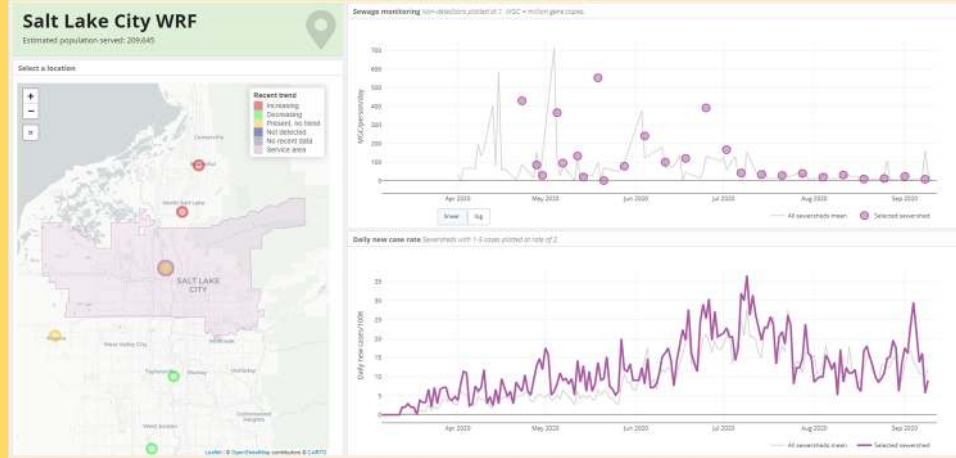
Wastewater Monitoring

The Utah Department of Environmental Quality (DEQ) Water Quality is supporting health responses across the state by providing information on the detection of SARS-CoV-2 (the virus that causes COVID-19) is shed in feces by infected individuals. Virus concentrations in sewage can be measured by collecting a sample at the inlet of sewage treatment plants. This information provides a pooled indicator of the status and trends of COVID-19 infections in communities served by the treatment plant (the sewer-shed).

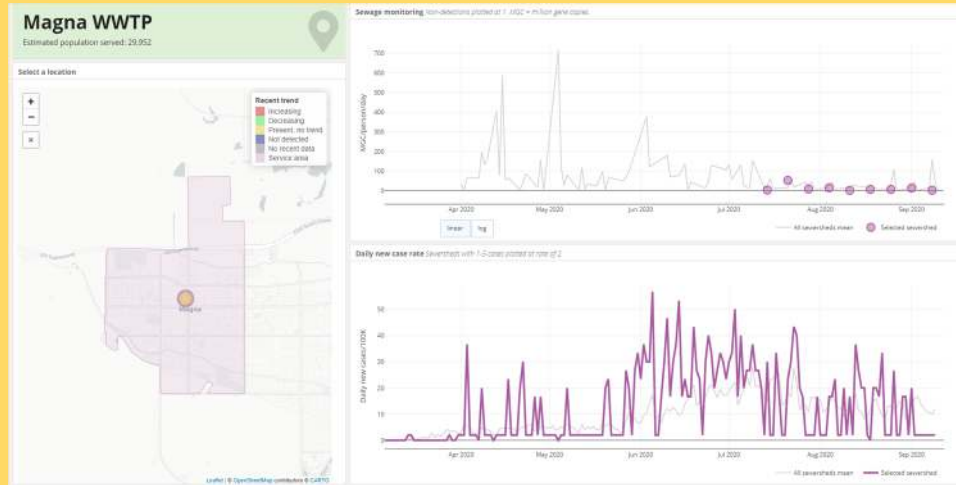
There are six treatment plants that serve Salt Lake County: 1) Salt Lake City WRF, 2) Magna WWTP, 3) South Valley WRF, 4) Central Valley WRF, 5) Jordan Basin SVPP, and 6) Jordan Basin WRF. Screenshots from each of the plants are provided below:

Wastewater Monitoring (by Treatment Plant)

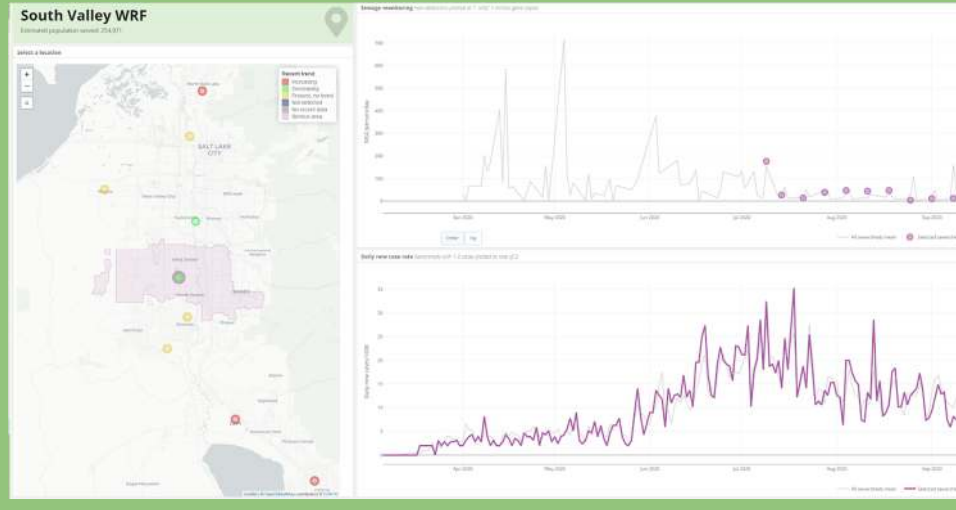
Salt Lake City WRF -- Present, No Trend



Magna WWTP -- Present, No Trend

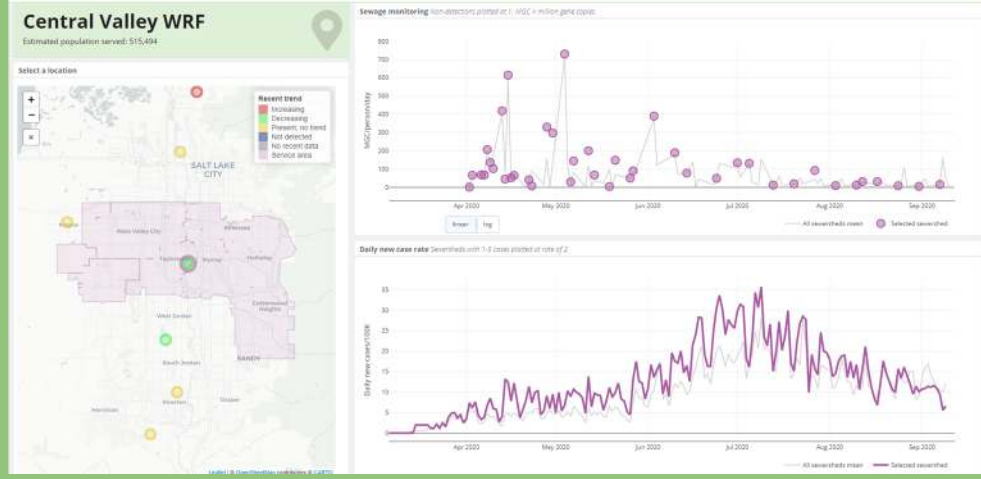


South Valley WRF -- Decreasing Trend

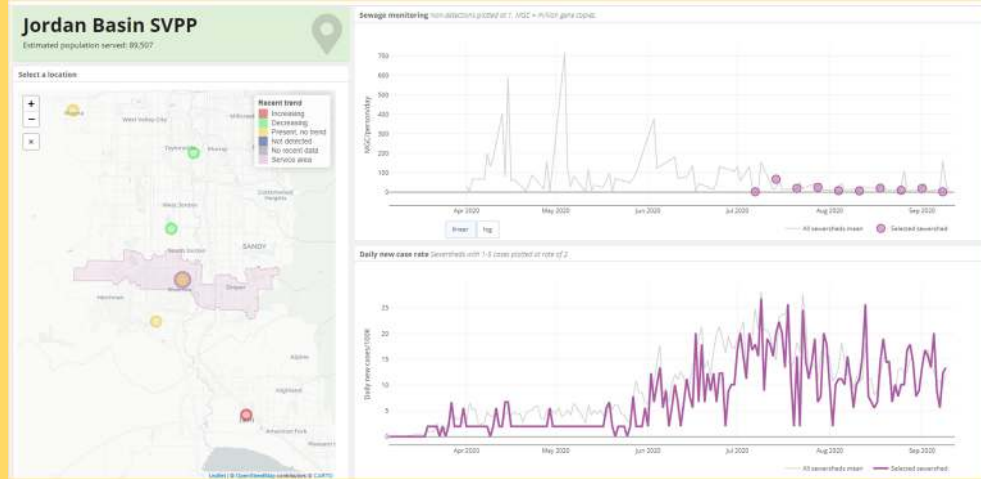


Wastewater Monitoring (by Treatment Plant)

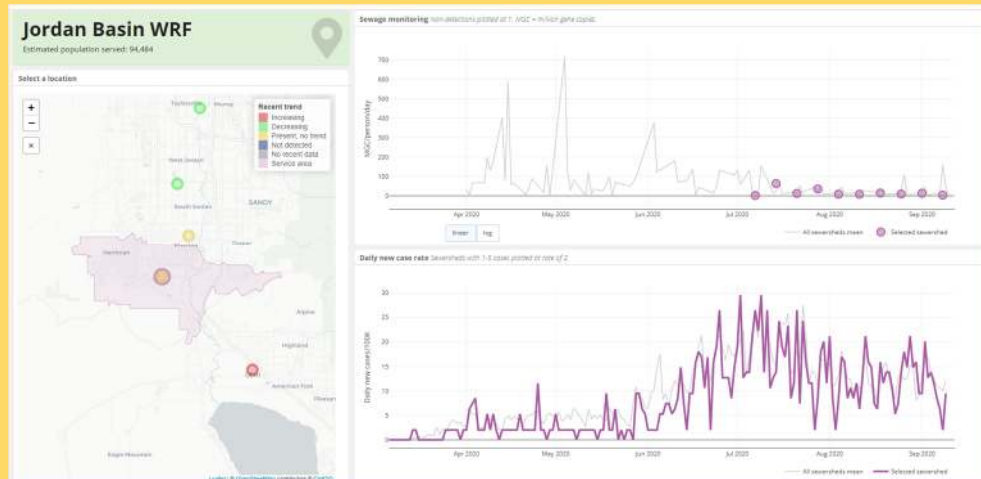
Central Valley WRF -- Decreasing Trend



Jordan Basin SVPP -- Present, No Trend



Jordan Basin WRF -- Present, No Trend



The most recent data captured is from September 8, 2020. For additional information, visit: <https://deq.utah.gov/water-quality/sars-cov-2-sewage-monitoring>.

Analysis of Infection for Ages 5-18

With attention of school-associated cases, Salt Lake County's Epidemiological Bureau pulled both recent (last 30 days) and weekly case counts for the ages between 5-18. The first chart shows daily numbers of cases of infection for 5-18 year olds since August 17, while the second chart provides counts by week since the week ending on March 21. Salt Lake County's Epidemiological Bureau and Intelligence Group will continue to monitor and analyze trends.

Chart 1. Daily Case Count for Ages 5-18

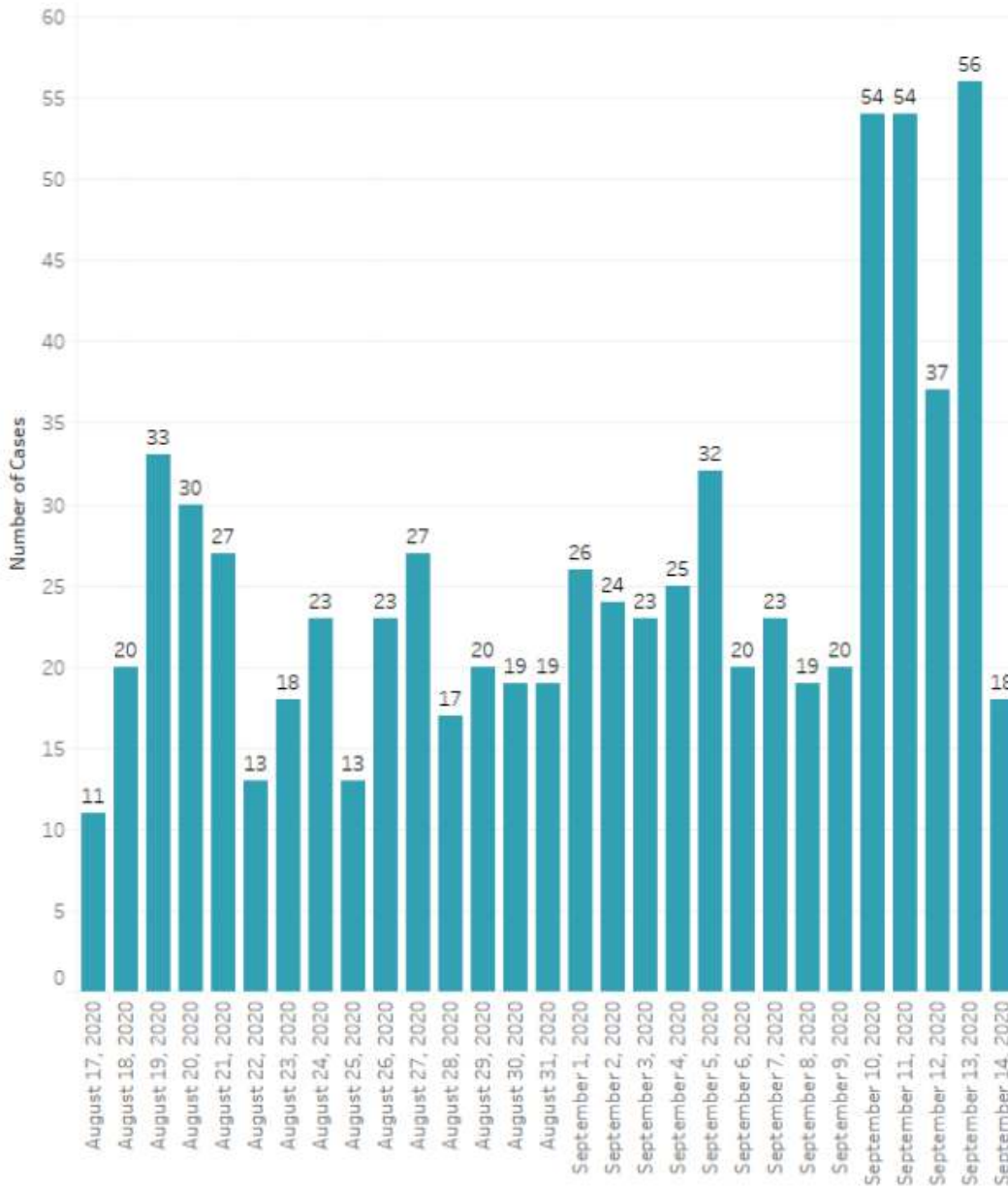


Chart 2. Case Count by Week End Day for Ages 5-18

