

# WASATCH CANYONS GENERAL PLAN UPDATE

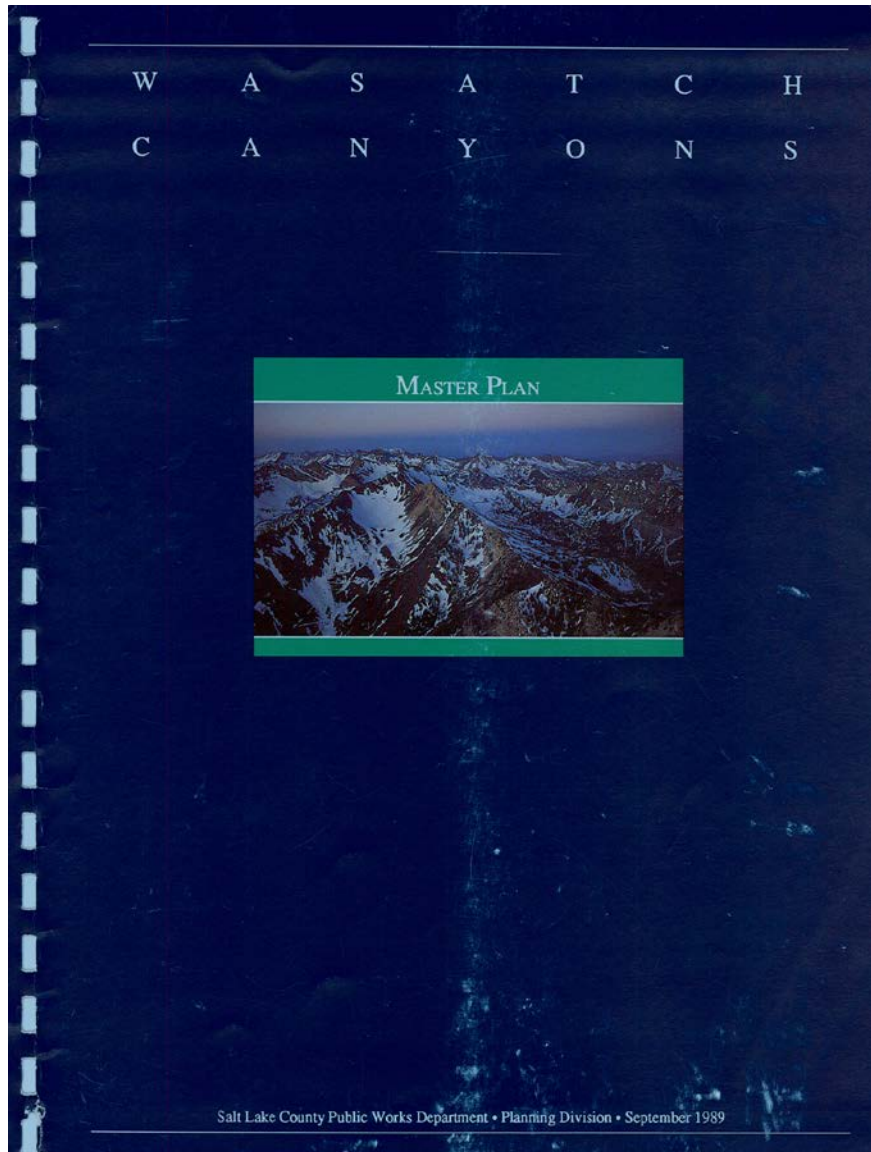
May 2020

**Dina Blaes** – Director Office of Regional Development  
**Ryan Perry** - Director Planning & Transportation  
**Jake Young** – Planning Program Manager  
**Zach Shaw** – District Attorney  
**Jim Carter** - Consultant





# SLCo current plan is from 1989 – Population then 719,048 – today 1,160,437 (2019 estimate)



## What's changed since late 1980s?

- More traffic
- Increase in County & State populations & out-of-state visitors
- Increase in year-round visitation
- Straight skis vs shaped
- 1989 Lift Ticket Prices  
Alta \$18 – now \$125  
Snowbird \$32 – now \$160  
Solitude \$13 – now \$115  
Brighton \$14 – now \$114

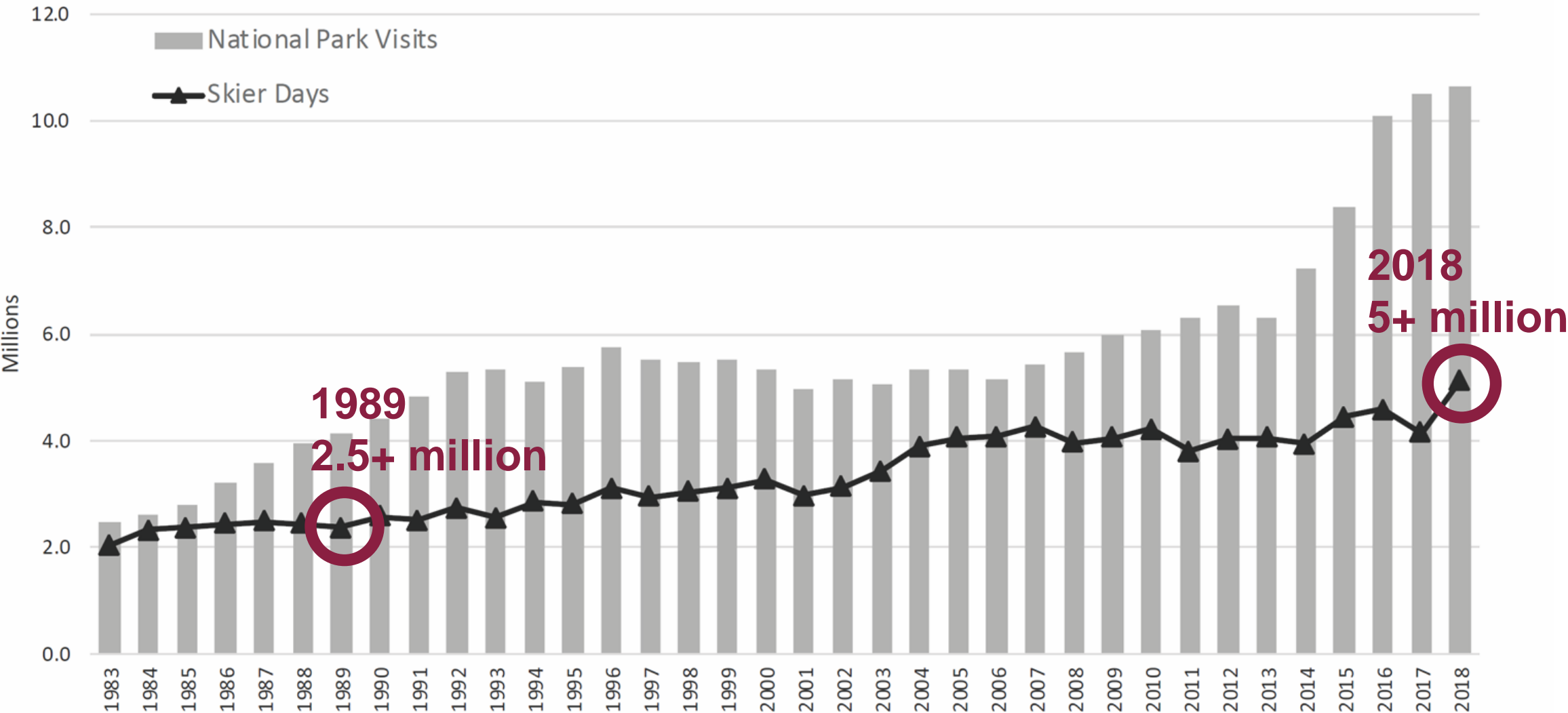


## What are we still concerned about?

- Importance of watershed protection
- Public safety
- Recreation experience
- Multi-modal transportation
- Balance of public vs private land uses



# Total Utah Skier Visits



Source: U.S. National Park Service and Ski Utah

## Traffic Counts – AADT (Annual Average Daily Traffic)

Canyon	Year 1989	Recent (2017)
Parleys	25,000	59,000
Mill Creek	435*	2,500**
Big Cottonwood	3,700	5,700
Little Cottonwood	5,100	6,600

Parleys, BC, LC data source UDOT

\* 1996 numbers from 1996 SLC Watershed Plan

\*\* Current numbers from SLCo



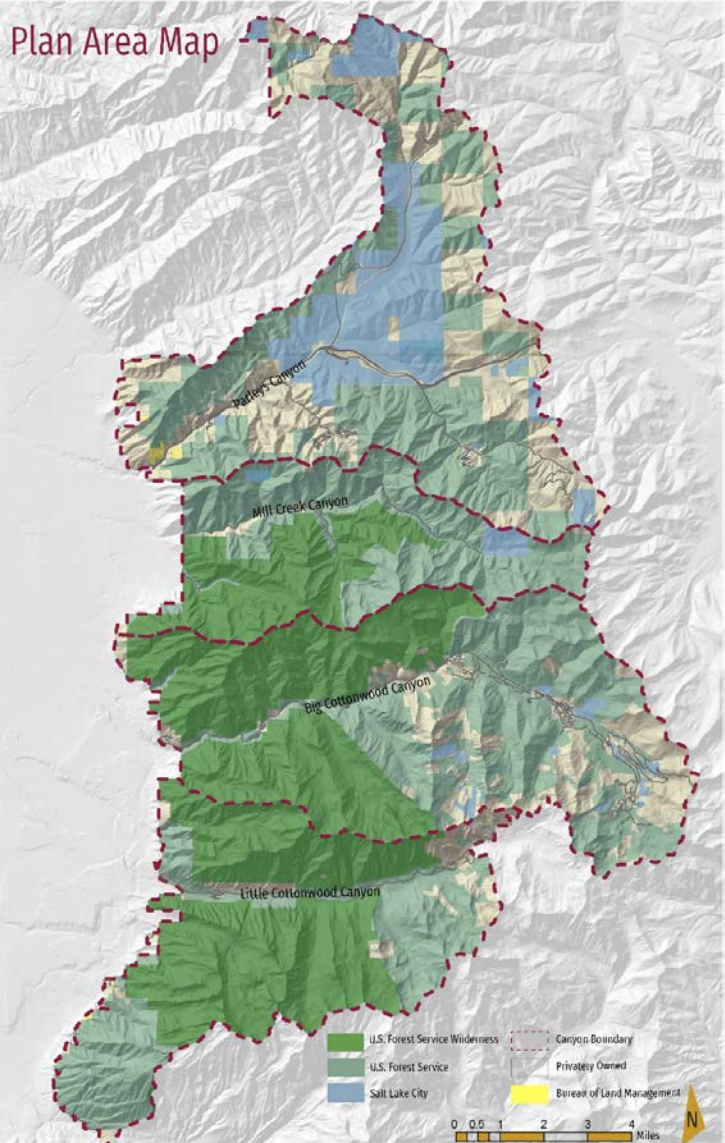
# SLCo 2020 WCGP – Ready to Guide the Future of the Canyons



A VISION FOR THE WASATCH CANYONS

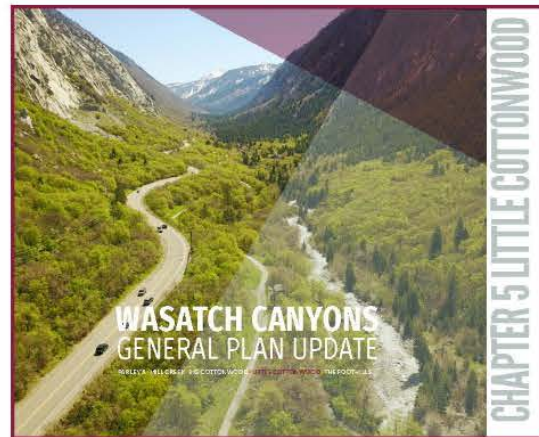
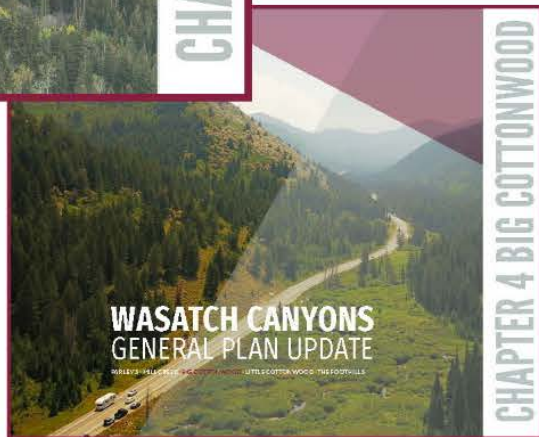
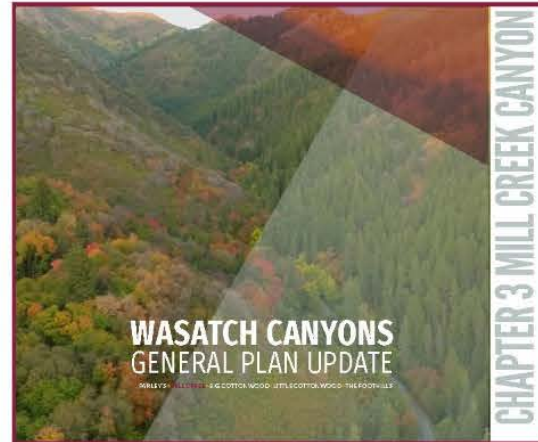


# Plan Area – SLCo Mountainous Planning District





# Plan





An aerial photograph of a vast, snow-covered mountain valley. In the background, a calm lake is nestled between distant mountain ranges. The foreground and middle ground show steep, snow-dusted slopes with patches of evergreen trees. The overall scene is serene and majestic, with a soft, hazy atmosphere.

## **Elements Of The General Plan**

**Housing**

**Land Use**

**Transportation**

**Environment**

**Recreation**

**Economy**

An aerial photograph of a winding asphalt road that curves through a dense, green forested mountain valley. The road starts from the bottom left, curves around a hillside, and then continues towards the right. The surrounding landscape is rugged and covered in thick evergreen trees.

**Plan Composition**

**Vision Statements**

**Goals**

**Strategies**

**Actions**



# Who Participated in the Planning Process?

- The Public
- Steering Committee
- Stakeholders
- Mountainous Planning District Planning Commission
- Mayors & Elected Officials
- Staff, Consultants & Other Professionals
- County Council



# Planning Process (2017-2020)

- **Public Open Houses (17)**
- **Monthly Steering Committee Meetings**
- **Stakeholder Meetings (Rec., Environment, Trans., Businesses, Gov.)**
- **Analysis – Outreach – Visioning – Proposed Ideas - Feedback - Refinement**
- **Mountainous Planning District Planning Commission – Ongoing involvement**
- **March 2020 MPDPC Recommended Plan**
- **Next County Council**

## A Community Built Vision

- 17+ Community Events
- 3,174 Survey Respondents
- ~4,000\* Process Participants
- 6,000+ Website Hits (Unique)



## **Plan Goals - Housing**

### **2019 Moderate Income Housing Plan (adopted Dec. 2019)**

- **Implement zoning incentives for low to moderate income units in new developments.**
- **Allow for single room occupancy developments.**
- **Create or allow for, and reduce regulations related to, accessory dwelling units (ADU) in residential zones.**



## Plan Goals – Land Use

- ENSURE THAT FEDERAL, STATE, AND LOCAL AGENCIES AND ENTITIES WITH JURISDICTIONAL RESPONSIBILITIES IN THE WASATCH CANYONS PLANNING AREA REGULARLY COORDINATE PLANNING AND MANAGEMENT EFFORTS.



## Plan Goals – Land Use

- REVIEW AND UPDATE COUNTY ORDINANCES, AS NEEDED, TO FURTHER IMPLEMENT THE VISION, GOALS, AND STRATEGIES OF THE GENERAL PLAN.



## Plan Goals – Environment

- **ENSURE THE MANAGEMENT OF WATERSHEDS IN THE WASATCH CANYONS TO PROTECT WATER QUALITY AND QUANTITY.**
- **ENSURE THAT FUTURE IMPROVEMENTS IN AND USAGE OF THE WASATCH CANYONS ARE MANAGED TO PROTECT WILDLIFE, FISHERIES, AND HABITAT AND TO REDUCE HUMAN-WILDLIFE CONFLICTS.**



## **Plan Goals – Environment**

- **MAINTAIN AND INCREASE THE CONSERVATION OF NATURAL LANDS THAT PROTECT ECOSYSTEMS AND WATERSHEDS AND PROVIDE RECREATIONAL OPPORTUNITIES.**
- **ENHANCE PUBLIC AWARENESS, INVOLVEMENT, AND STEWARDSHIP OF ENVIRONMENTAL AND RECREATIONAL VALUES AND PRACTICES.**





## Plan Goals – Environment

- **PREPARE FOR POTENTIAL NATURAL HAZARDS AND DISASTERS IN THE CANYONS AND FOOTHILLS.**



## Plan Goals – Transportation

- **SUPPORT ENHANCED YEAR-ROUND TRANSIT SERVICE TO AND WITHIN THE WASATCH CANYONS.**
- **SUPPORT ADEQUATE ROADWAY FACILITIES TO ENHANCE SAFETY, EFFICIENCY, AND MODE CHOICE IN THE WASATCH CANYONS.**



## Plan Goals – Transportation

- **PROMOTE BICYCLING AND WALKING THROUGH ENHANCING THE SAFETY AND ACCESSIBILITY OF TRAILHEADS, PARKING LOTS, BICYCLE LANES, AND OTHER PUBLIC FACILITIES.**
- **SUPPORT MANAGEMENT OF PARKING TO PROVIDE FOR SAFETY, SCENIC QUALITY, AND ENVIRONMENT PROTECTION.**

## Plan Goals – Recreation

- **IMPROVE THE RECREATION USER EXPERIENCE WHILE PREPARING FOR FUTURE DEMAND.**
- **DEDICATE FUNDING SOURCES TO ASSIST IN THE IMPLEMENTATION OF CAPITAL IMPROVEMENT PROJECTS AND TO PROVIDE ONGOING SUPPORT FOR MAINTENANCE AND OPERATIONS.**



## Plan Goals – Economy

- **SUPPORT THE CONTINUATION AND VIABILITY OF CANYON BUSINESSES WHILE CONSERVING THE NATURAL FEATURES AND RECREATIONAL ATTRIBUTES THAT MAKE THE CANYONS A VITAL ECONOMIC IMPACT IN UTAH.**
- **MEET THE GROWING DEMANDS FOR RESIDENTS, BUSINESSES, AND VISITORS BY ENHANCING AND IMPROVING PUBLIC UTILITY SYSTEMS.**



# Plan Adoption

- **Plan distributed electronically**

<https://slco.org/planning-transportation/wasatch-canyons-general-plan-update/>

- **Notify Public, Stakeholders & Participants**
- **Public Comments**
- **County Council Public Hearing, Discussion & Adoption**



# Questions - Public Comments - Discussion

