



GREATER SALT LAKE
Municipal Services
District

PLANNING & DEVELOPMENT

Our Vision

Creating a service-oriented culture in government utilizing data and information to proactively make informed decisions.

Our Mission

To support community management policies, plans, and programs that address a wide range of issues including:

- Land Use
- Housing
- Infrastructure
- Natural Resources
- Economic Development
- Growth Management
- Delivery of Services



Achieving our Vision

Everyday our solutions impact the people we serve

1. Customer Service

Maintain a customer centered focus in our performance measurement process.

2. Performance Management

Use Performance Data in Strategic Planning and Operational Decision-making.

3. Strategic Leadership

Hold managers and staff accountable for measuring performance using data to improve services, sharing data and using data to communicate and tell a story with constituents.

4. Technology Literacy

Ensure information technology is incorporated appropriately for service delivery, information sharing and public access.

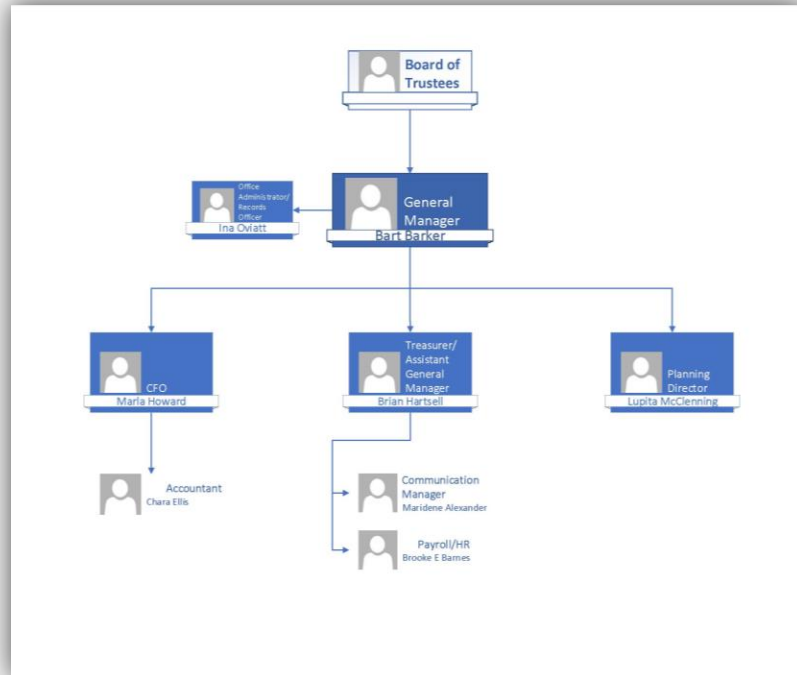
We specialize in all areas of:

- Land Use and Zoning
 - Permitting and Licensing
 - Building Reviews and Inspections
 - Stormwater and Grading
 - Community Planning
 - Urban Design
 - Economic Development
 - Technology Solutions
 - GIS
 - Cityworks
 - Gridics
-

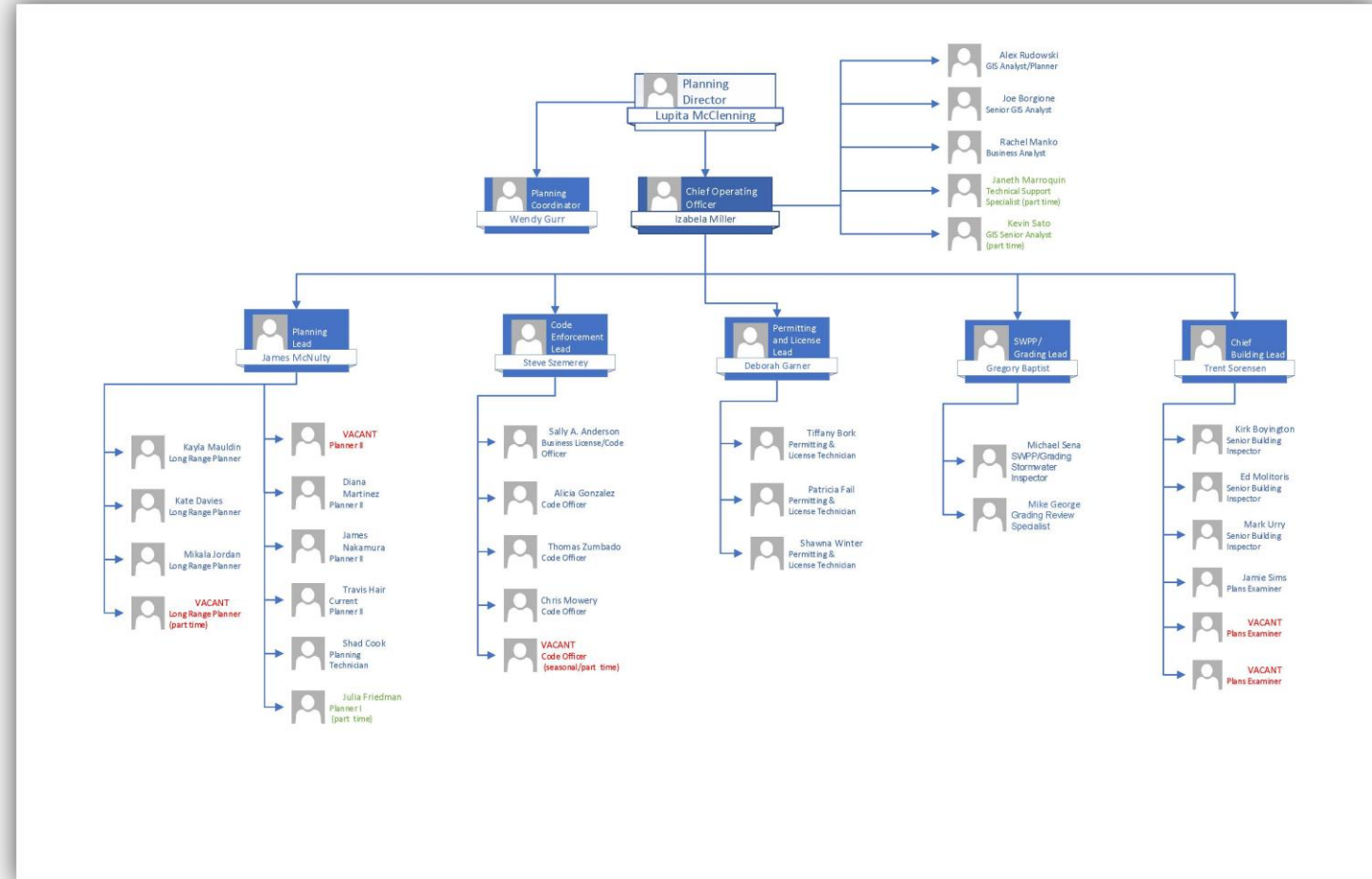
Who We Are



MSD Administration



PDS Professional Staff





What We Do

We strengthen communities through creative, dynamic, and viable approaches to planning, design, and development.

From creating context sensitive zoning regulations to technology solutions, the PDS provides expertise necessary to improve the relationship between people and their environment.

Our professional staff provides a collaboration of disciplines and is committed to developing creative solutions that ensure compatibility between the existing, new, built, and natural environments.

Project Highlights

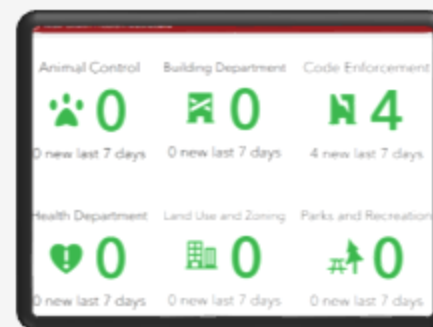
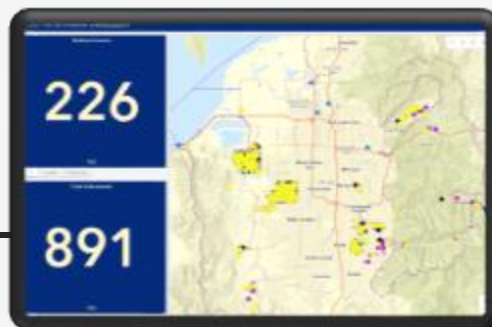
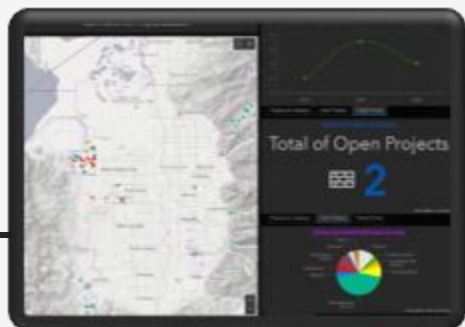


Long Range Planning:

- Technical Assessments
- Public Outreach
- Community Transportation Survey
- Steering Committee Meetings
- Open Houses
- Using GIS to support data-driven decisions (surveys, dashboards)

Land Use and Zoning:

- Model Ordinances
- Analysis and Findings
- Data-driven decisions (dashboards)
- Project Transparency
- Application Process Updates



Form titled "Planning for transportation & Land Use". The form includes a text area for comments, a "Submit" button, and a "Cancel" button. The form is displayed on a tablet screen.

Software - Highlights



Gridics

Increase public transparency and improve planning efficiency with proprietary zoning platform.

Cityworks PLL

Designed to simplify applications for customers and streamline workflows for staff. It contains three components: Permits, Licensing, and Land Use.

ESRI

With the use of GIS, MSD finds patterns, assesses trends, or makes decisions from crime analysis to land use planning.

Examples:

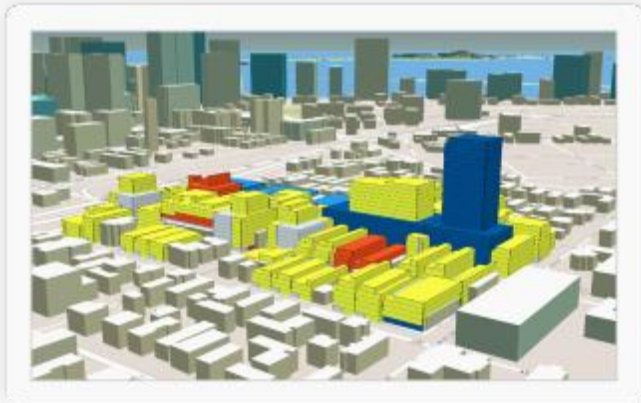
- Sales Tax Dashboards
- Custom GIS Web Applications
- Citizen Reporter Tool
- Land Analysis using GIS tools
- FCOZ Analysis using GIS tools
- Roads classification for Class B and C
- Emergency Preparedness



What Does Gridics Address?

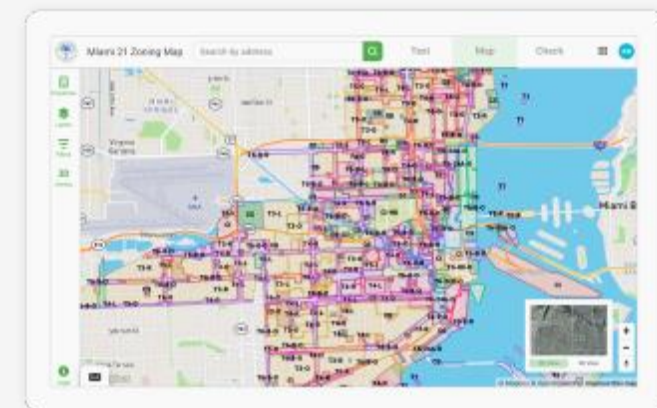
Advanced 3D Planning

- Demonstrate to staff, stakeholders, and citizens zoning changes in minutes
- Analyze development scenarios, TODs, corridor studies, etc. at a parcel or entire city level in real-time 3D



Front Counter

- Quickly respond to questions like, “What can I build on my property?”
- Seamlessly integrate online citizen self-help resources to address citizen inquiries before they even call or visit your help desk





What Does Gridics Address?

Code Management

- Collaborate on and publish code changes in seconds, not months
- Unify your online code text, zoning maps, and citizen help resources with one easy-to-use platform
- Visualize code changes and development scenarios using Gridics' proprietary 3D zoning rules engine





Gridics Technology

Zoning Ordinance Integration & Calibration

Integrating MSD zoning ordinance to visualize development potential via its maps platform and its scenario analysis software

Site Selection Search

Integrating property filters function into the maps giving staff the ability to easily and quickly analyze and identify sites based on customized criteria

Capital Improvement Projects Data

Integrating data layer of capital improvement projects into its maps to visualize the stage of each project and deliver relevant information for citizens and stakeholders

Visualize Zoning Changes

Working to integrate visualizations of proposed zoning changes for staff analysis and optional integration into the maps platform for comparison to existing conditions

Other Custom Data Layers

Working with MSD to define and integrate any other custom data layers into the maps platform

Corridor & TOD Studies

Working with the planning team to produce corridor studies

Rezoning Studies

Working with the planning team to produce rezoning studies, outputting before and after visualizations and data

Economic Development Studies

Supporting Long Range Planning team to assist in producing site selection and other property analysis studies as needed

Infrastructure Analysis

Working on infrastructure analysis projects leveraging proprietary development potential analysis capabilities to help drive decision making



GREATER SALT LAKE

**Municipal Services
District**

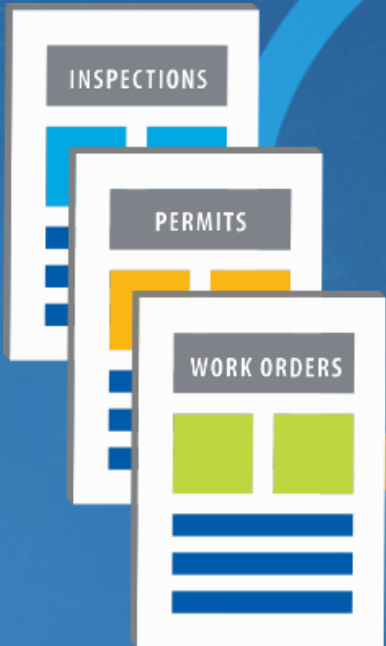
Cityworks®

**Stores Work
Activities**



esri®

**Stores Assets
& Attributes**



Land Data
Parcels
Addresses
Zoning
Planning Areas

Planning &
Zoning

Building
Permits

Code
Enforcement

Business
License

Building
Review

Building
Inspections



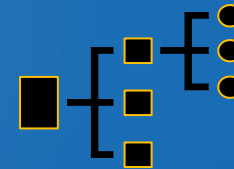
People



Data



Workflows



Software



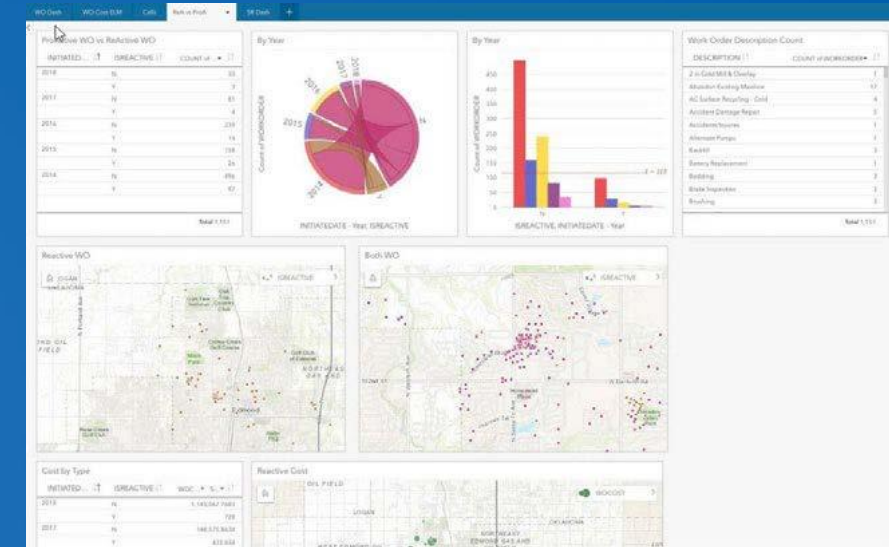
Hardware





Support Data Driven Decisions

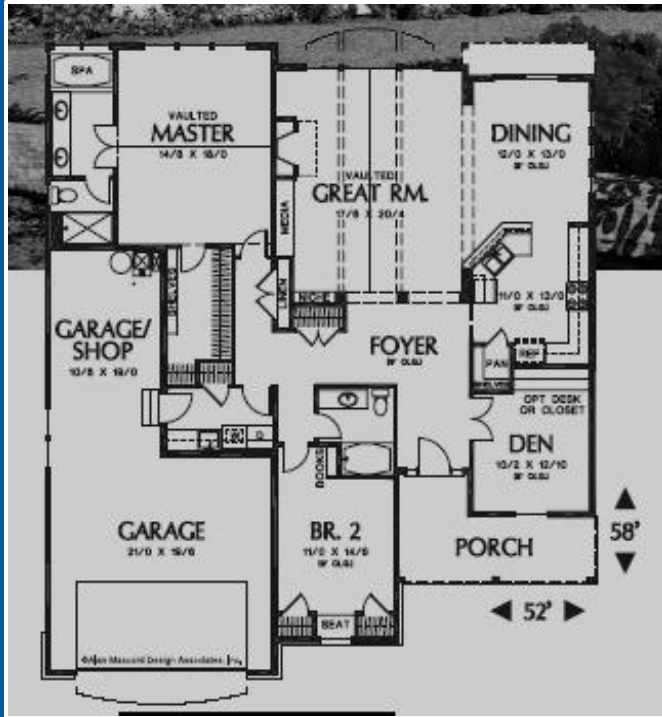
- Collect, organize, and maintain accurate locations and details about projects
- Track, manage, and monitor resources in real-time
- Discover, quantify and predict trends and patterns to improve outcomes
- Gain situational awareness, and enable information-driven decision making
- Communicate and collaborate with citizens and external communities of interest
- Empower everyone to easily discover, use, make, and share geographic information



Workflows - Residential Building Permit (example)



GREATER SALT LAKE
Municipal Services
District



Permit
Application



Plans
Reviewed



Permit
Issued



Building Inspections



Cert. of Occupancy



Update
ArcGIS



Cityworks
Empowering GIS



RETURN ON INVESTMENT

