

# SALT LAKE COUNTY

## WASATCH CANYONS GENERAL PLAN UPDATE

April 2020

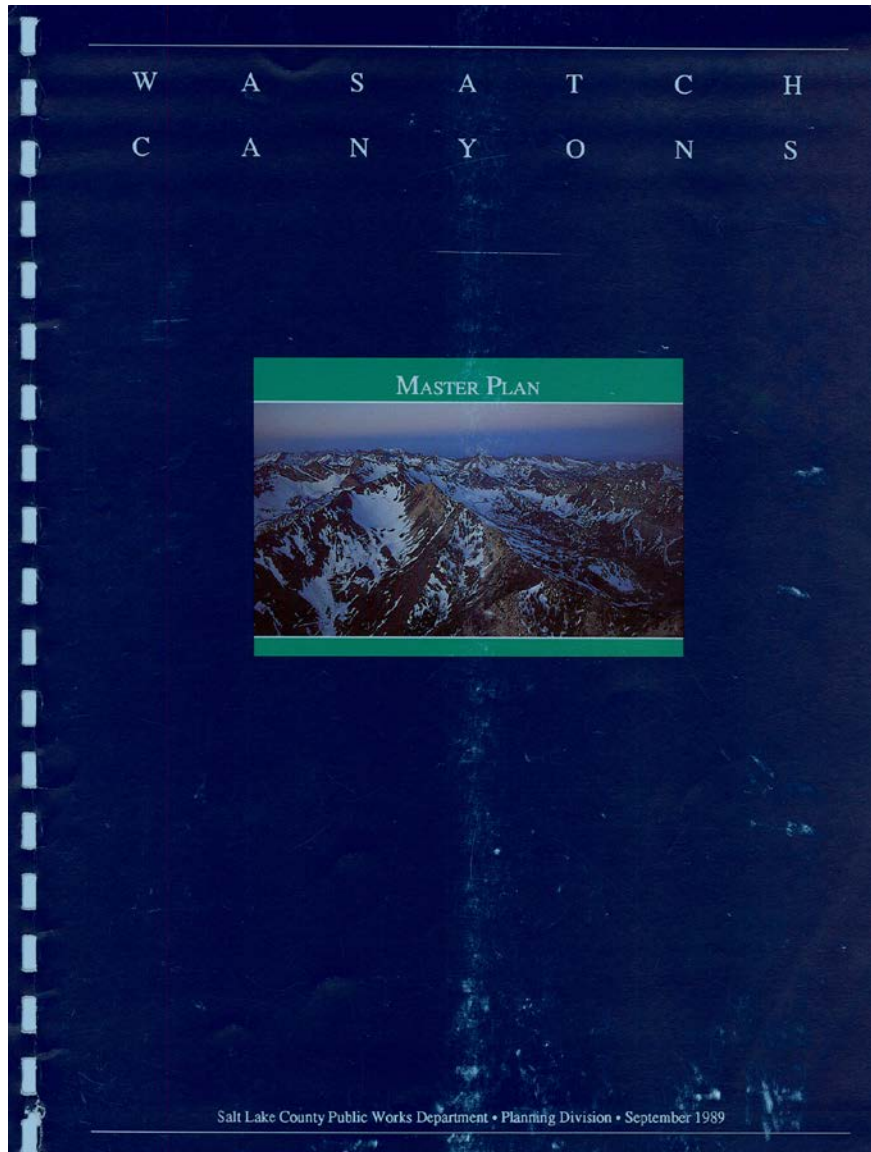
Ryan Perry

Jake Young





# SLCo current plan is from 1989 – Population then 719,048 – today 1,160,437 (2019 estimate)



## What's changed since late 1980's?

- More traffic
- Increase in County & State populations & out of state visitors
- Increased in year-round visitation
- Straight skis vs shaped
- 1989 Lift Ticket Prices  
Alta \$18 – now \$125  
Snowbird \$32 – now \$160  
Solitude \$13 – now \$115  
Brighton \$14 – now \$114

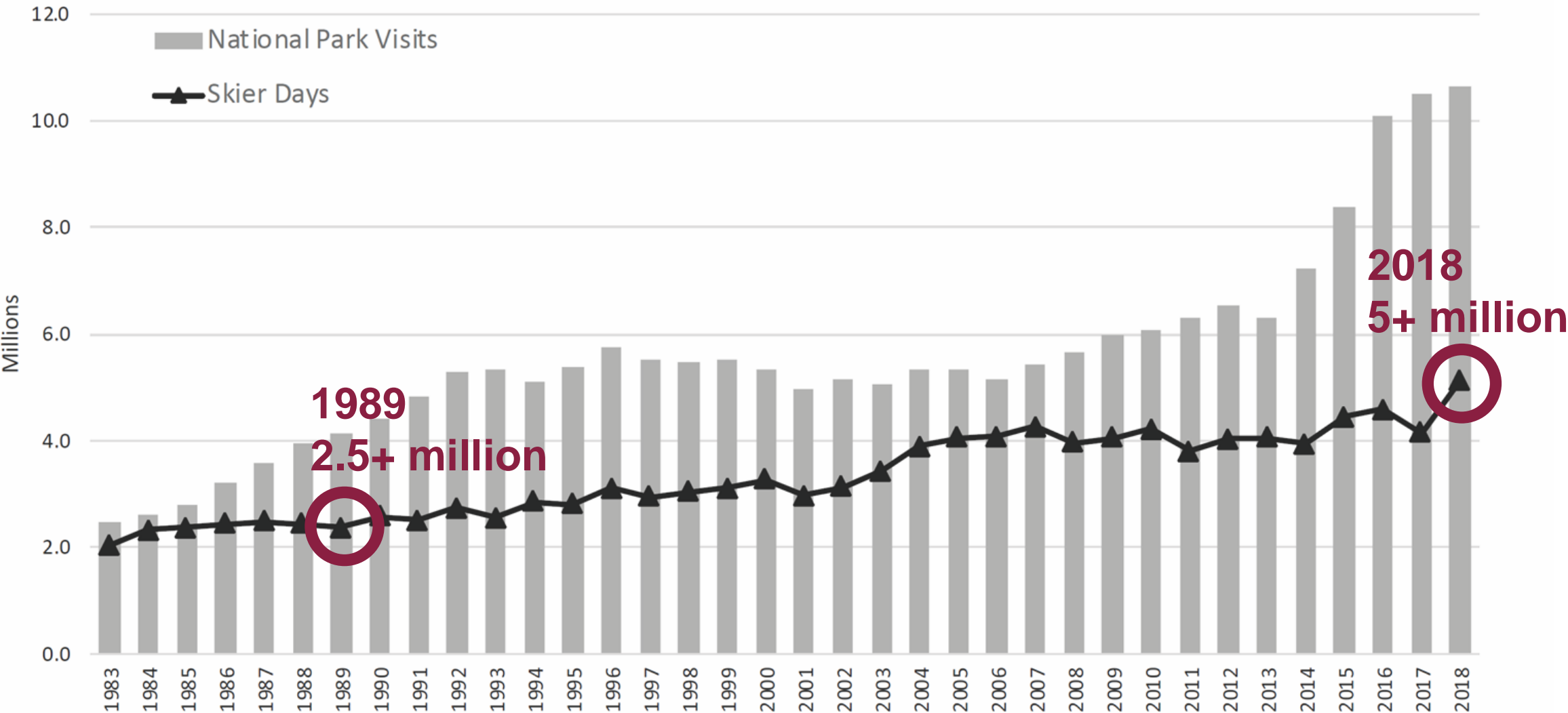


## What are we still concerned about?

- Importance of watershed protection
- Public safety
- Recreation experience
- Multi-modal transportation
- Balance of public vs private land uses



# Total Utah Skier Visits



Source: U.S. National Park Service and Ski Utah

## Traffic Counts – AADT (Annual Average Daily Traffic)

Canyon	Year 1989	Recent (2017)
Parleys	25,000	59,000
Mill Creek	435*	2,500**
Big Cottonwood	3,700	5,700
Little Cottonwood	5,100	6,600

Parleys, BC, LC data source UDOT

\* 1996 numbers from 1996 SLC Watershed Plan

\*\* Current numbers from SLCo



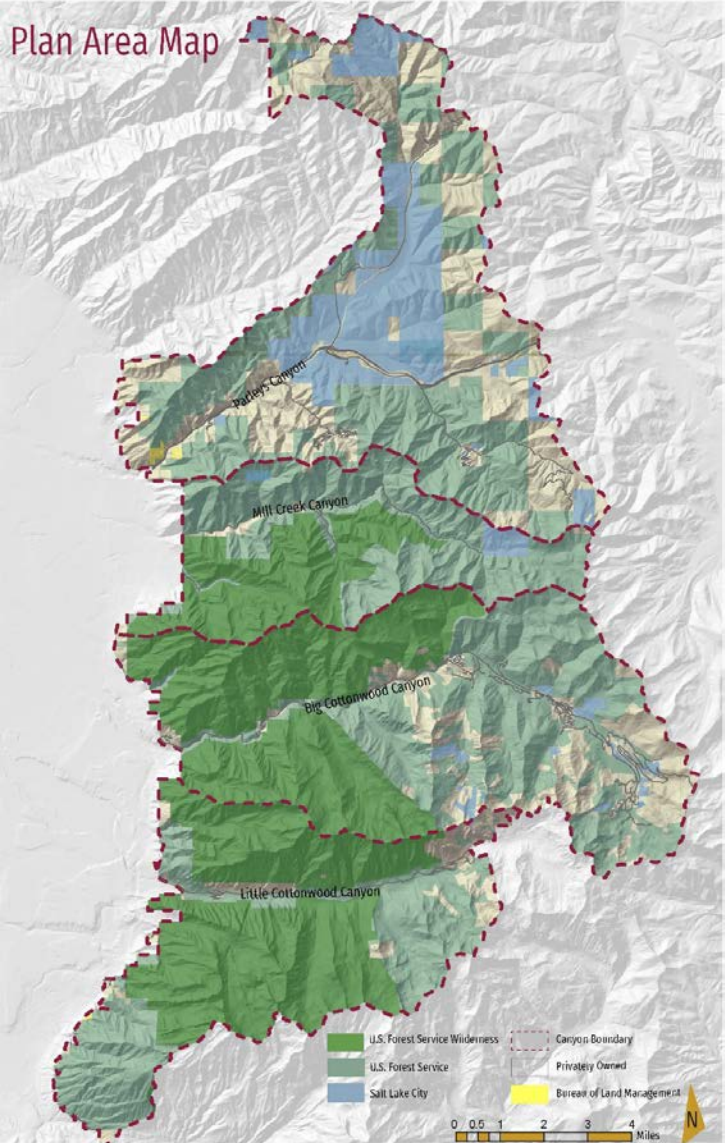
# SLCo 2020 WCGP – Ready to Guide the Future of the Canyons



A VISION FOR THE WASATCH CANYONS



# Plan Area – SLCo Mountainous Planning District





# Plan





# Elements Of The General Plan

## Housing (CHAPTER 1)

## Land Use

## Transportation

## Environment

## Recreation

## Economy



An aerial photograph of a winding asphalt road that curves through a dense, green forested mountain valley. The road starts from the bottom left, curves upwards and to the right, then loops back to the left, and finally continues towards the bottom right. The surrounding landscape is rugged and covered in thick evergreen trees. The text is overlaid on the upper portion of the image.

**Plan Composition**

**Vision Statements**

**Goals**

**Strategies**

**Actions**



# Who Participated in the Planning Process?

- The Public
- Steering Committee
- Stakeholders
- Mountainous Planning District Planning Commission
- Mayors & Elected Officials
- Staff, Consultants & Other Professionals
- County Council



# Planning Process (2017-2020)

- **Public Open Houses (17)**
- **Monthly Steering Committee Meetings**
- **Stakeholder Meetings (Rec., Environment, Trans., Businesses, Gov.)**
- **Analysis – Outreach – Visioning – Proposed Ideas - Feedback - Refinement**
- **Mountainous Planning District Planning Commission – Ongoing involvement**
- **March 2020 MPDPC Recommended Plan**
- **Next County Council**

## A COMMUNITY-BUILT VISION

- 17+ Community Events
- 3,174 Survey Respondents
- ~4,000\* Process Participants
- 6,000+ Website Hits (Unique)





# Plan Adoption

- **Plan distributed electronically**

<https://slco.org/planning-transportation/wasatch-canyons-general-plan-update/>

- **Notify Public, Stakeholders & Participants**
- **County Council Public Hearing, Discussion & Adoption**
- **Public Hearing was set for May 19<sup>th</sup>, 2020**