

WHAT IS THE CENTRAL WASATCH COMMISSION



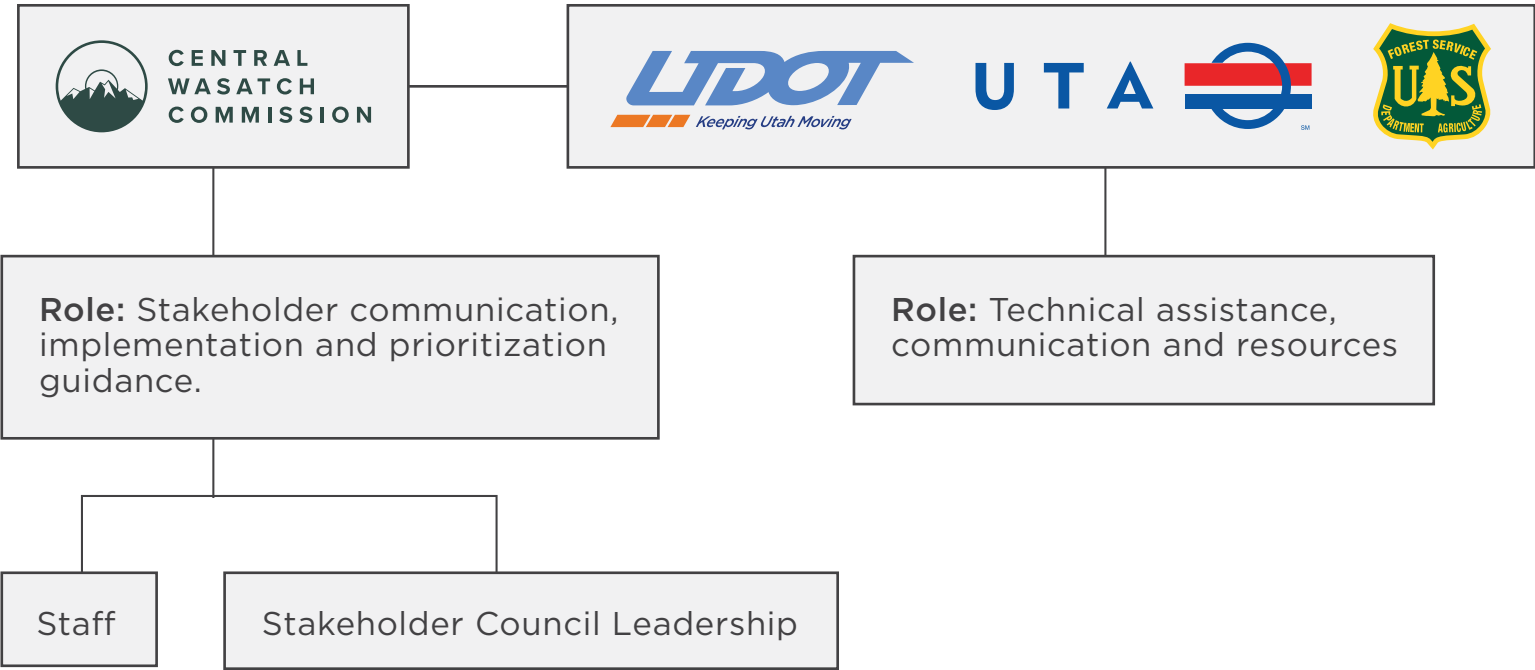
THE CENTRAL WASATCH COMMISSION’S (CWC) MISSION IS TO IMPLEMENT THE VISION OF THE MOUNTAIN ACCORD AND DECADES OF PLANNING.

The CWC is an intergovernmental entity working to implement transportation, recreation, economic development and sustainability initiatives in the Central Wasatch Mountains.

CENTRAL WASATCH COMMISSION MEMBERS:

TOWN OF ALTA | COTTONWOOD HEIGHTS | MILLCREEK | PARK CITY
SANDY CITY | SALT LAKE CITY | SALT LAKE COUNTY | SUMMIT COUNTY
UTAH DEPARTMENT OF TRANSPORTATION

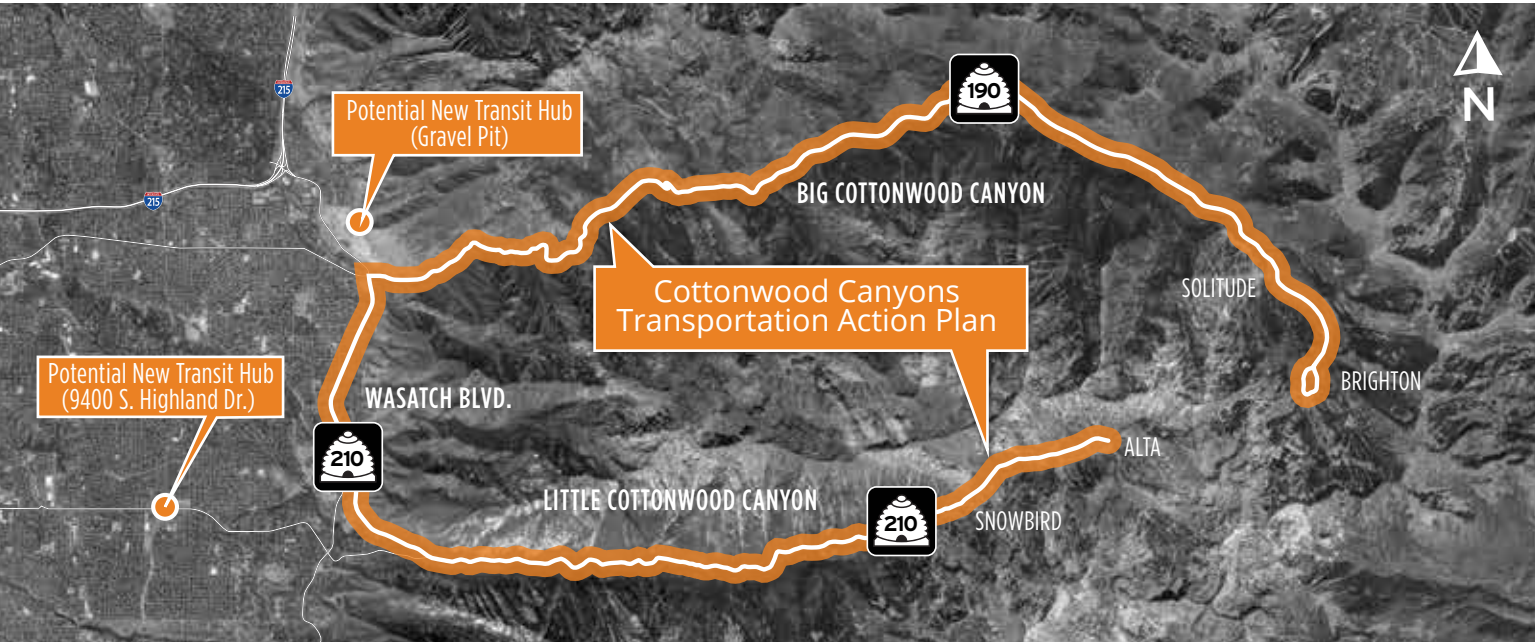
TRANSPORTATION ACTION PLAN PARTNERS



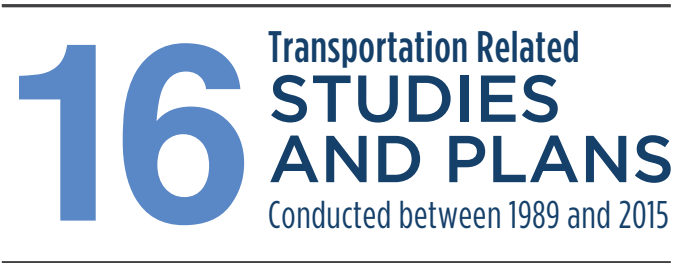
COTTONWOOD CANYONS
TRANSPORTATION ACTION PLAN

SOLUTIONS FOR THE FUTURE

COTTONWOOD CANYONS BY THE NUMBERS



BUILDING ON GOALS DEVELOPED DURING MOUNTAIN ACCORD PROCESS



Source: Mountain Accord, 2014

MOUNTAIN ACCORD GOALS – 2014

- Provide integrated multimodal transportation choices for residents, visitors and employees.
- Ensure the transportation experience is reliable and facilitates a positive experience.
- Ensure the transportation experience is safe and promotes health.
- The transportation system supports the natural and intrinsic values of the Central Wasatch.

CONTACT INFORMATION

udot.utah.gov/CottonwoodCanyons

CottonwoodCanyonsTAP@utah.gov

SOLUTIONS FOR THE FUTURE



Tolling



Parking Structures



Pedestrian and Bike Facilities



Roadway Capacity



Trailheads



Transit



TOLLING

The Transportation Action Plan will evaluate tolling to identify revenue potential, travel demand management strategies and implementation feasibility. A public survey will be completed to help evaluate how tolling could affect users' travel behavior.



PARKING STRUCTURES

The Transportation Action Plan will evaluate the approximate size and layout of parking structures, trade-offs of structured parking in comparison to surface parking and the utilization of existing parking locations. Community benefits of parking structures outside of peak ski days will also be evaluated.



ROADWAY CAPACITY, TRAILHEADS, PEDESTRIAN AND BIKE FACILITIES

The Transportation Action Plan will identify needs for improvements related to roadway, safety and other user concerns around these topics.

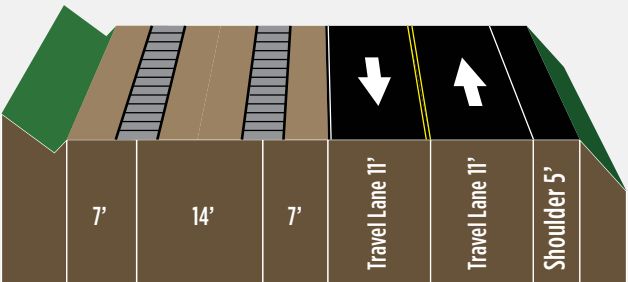


TRANSIT

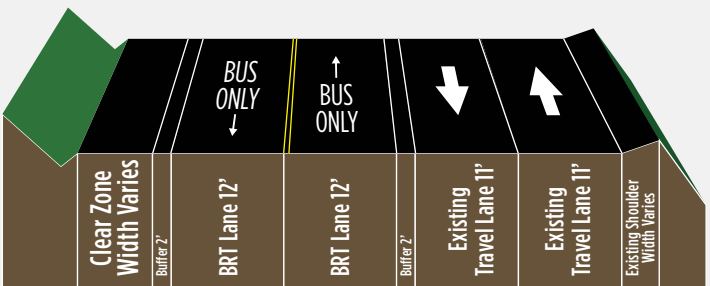
The Transportation Action Plan will advance transit concepts for a mountain transportation system such as a gondola, rail or bus. We will be building on these concepts brought forward in previous studies including the Mountain Accord and the 2012 Mountain Transportation Study.

The team will gather input regarding what metrics should be used for evaluation, possible locations and general comments regarding the advantages and disadvantages of these transit modes.

Concept Mountain Rail Cross Section



Concept BRT Typical Section



Gondola Concepts Developed During the 2012 Mountain Transportation Study



OUTCOMES

The Transportation Action Plan will identify short-to-long-term solutions for mountain transportation in the Cottonwood Canyons. This plan includes project prioritization, travel demand management strategies, funding pathways and implementation steps.

The action plan will build on previous efforts. Project partners will proactively work with all stakeholders in a transparent, inclusive process to identify solutions that consider a broad range of perspectives.

ANTICIPATED SCHEDULE

