



Salt Lake County Surveyor's Office

Presented August 21, 2018

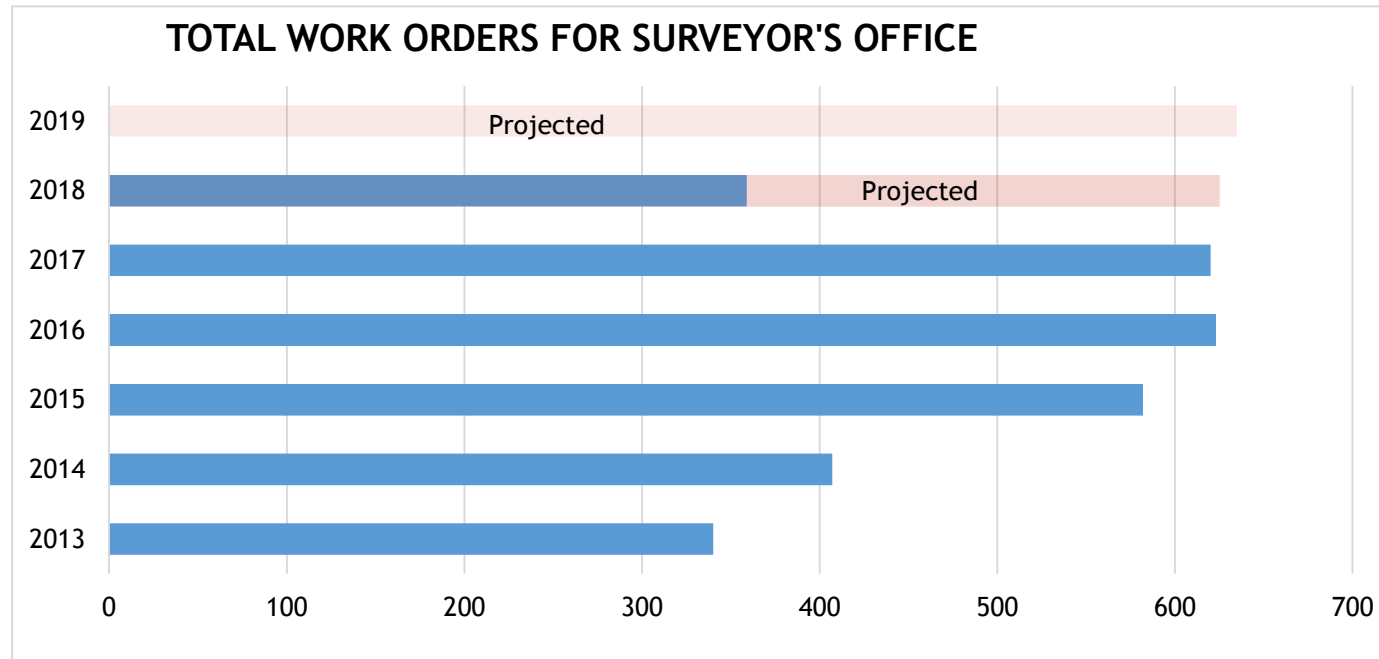
Introduction

Salt Lake County Surveyor's Office provides numerous statutory and professional services to the County and public.

- ▶ Emphasized focus on promoting efficient use of the office as a Countywide resource is a priority.
- ▶ This is accomplished through education, outreach and the formation of collaborative partnerships with County agencies and other local governments.
- ▶ The Surveyor's office utilizes specialized technological infrastructure and a number of shared Countywide IT resources to provide services.
- ▶ Categorical breakdown of the Surveyor's budget is:
 - ▶ 86.4% Personnel
 - ▶ 8.7% Operations
 - ▶ 4.9% Indirect Costs

PERFORMANCE MEASUREMENT

- A key performance measure is the number of work order requests from both the public and government entities. In 2013, total work order requests were 340. Our projected number for 2019 is 635, a 90% increase since 2013.



BUDGETING

Update on 2018 Budget

- ▶ Current 2018 Expenses (operating & labor) are in alignment with approved budget.
- ▶ No foreseeable 2018 budget adjustments that will impact the general or tax fund.



BUDGETING

2019 Projected Budgeting Consideration

- ▶ New Potential Budget Requests include:
 - ▶ Software upgrade, maintenance and implementation.
 - ▶ Personnel increases for market adjustments relating to employee retention and competitive recruiting.
 - ▶ Funding for survey tech interns.

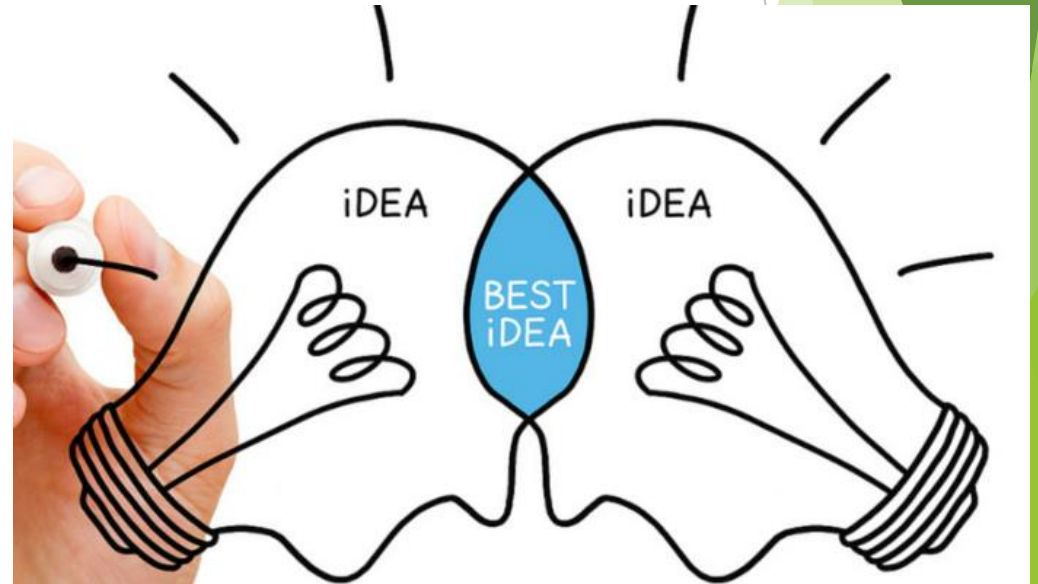


UPDATE ON 2018 INITIATIVES & ACCOMPLISHMENTS

Initiative: Increase utilization of Surveyor's Office resources and promote Countywide collaborative efforts.

Accomplishments:

- ▶ Collaborative efforts and services were expanded and extended through outreach, education and new pilot projects.
- ▶ Examples of County offices where collaborative efforts were expanded, include:
 - ▶ Office of Regional Development
 - ▶ Planning & Development Services/Townships
 - ▶ Mayor's Office
 - ▶ Community Services
 - ▶ Engineering Flood Control
 - ▶ Public Works Operations
 - ▶ County Council
 - ▶ County Clerk
 - ▶ Real Estate



UPDATE ON 2018 INITIATIVES & ACCOMPLISHMENTS

2018 Projects:

- ▶ VUEWorks full implementation
- ▶ Real Estate Web map
- ▶ LUCA/2020 Census
- ▶ Bee Inspector application
- ▶ Live Vote Center application
- ▶ Vista voting address verification
- ▶ Aerial photography partnership with Assessor's Office
- ▶ South Mountain Golf Course Encroachments
- ▶ Millcreek GIS and surveying support
- ▶ Active Transportation
- ▶ Homelessness web map
- ▶ VECC centerline updates
- ▶ Election map updates
- ▶ Recycling web map
- ▶ Noxious Weeds web map
- ▶ County Public Asset Fund
- ▶ Building Footprints
- ▶ Surplus Canal Deficiency Rehabilitation project
- ▶ Inland Port mapping project
- ▶ Magna storm drains project
- ▶ UAS Drone projects
- ▶ FCOZ mapping
- ▶ County Boundary adjustments
- ▶ Camp Kearns project

UPDATE ON 2018 INITIATIVES & ACCOMPLISHMENTS

Initiative: Bee Inspector Application

Accomplishments:

- ▶ Project to assist in Health Department's efforts to develop a strategic plan for the bee program, and to better quantify honeybee health throughout Salt Lake County.
- ▶ Previous records were kept manually.
- ▶ Spatially enable local bee inspectors to record health of local apiaries.
- ▶ Results of inspections can be quickly viewed, analyzed and shared.

Survey123 for ArcGIS

My Survey

Input Colony Number *

4

Inspection equipment properly sterilized before and after entering apiary? *

☒ Yes

☐ No

Apiary Comments

In good shape

Location *

40°42'N 111°53'W ± 2355 m

Post-Inspection Data

Has a license?	License Number Type	License Number	License Number	Address	City
Yes	1201	1201-22211	1202-	1202-	Salt L
No	1201	1201-	1202-	1202-	Salt L
Yes	1201	1201-23269	1202-	1202-	South
No	1201	1201-	1202-	1202-	Salt L
Yes	1201	1201-21910	1202-	1202-	Salt L
Yes	1201	1201-23465	1202-	1202-	Salt L
Yes	1201	1201-23883	1202-	1202-	Provo
Yes	1201	1201-2127	1202-	1202-	Salt L
Yes	1201	1201-23744	1202-	1202-	Salt L
Yes	1201	1201-22478	1202-	1202-	Cotto


Queen Race
Italian

Queen Age
Unknown

Origin of Colony
Nuc

Quality of Laying Pattern
Excellent

On a scale of 0-5 (0 being the colony is dead and 5 being no significant problems in the hive) what would you rate the health of this hive:
4

Hive Image

HiveImage-20180506-23234 1.jpg

Hive Number
2

Is it Queenright?

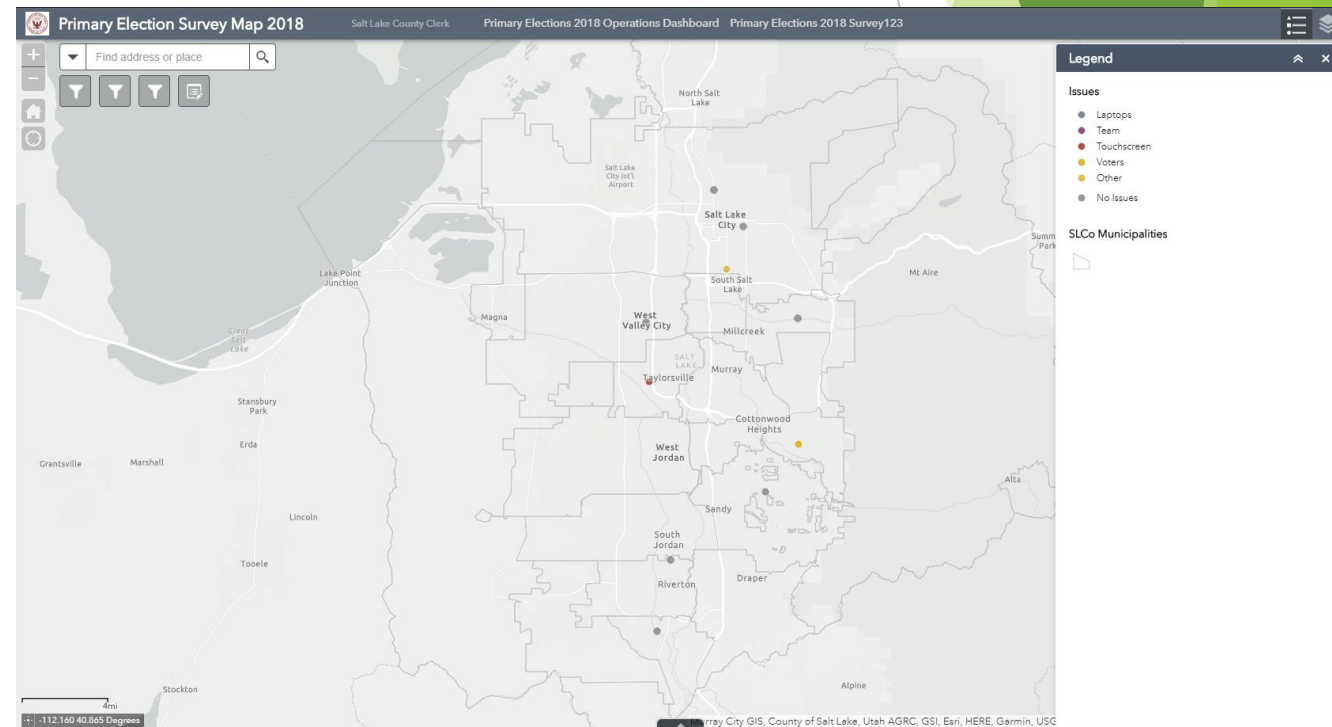
UPDATE ON 2018 INITIATIVES & ACCOMPLISHMENTS

Initiative: Live Vote Center Application

Accomplishments:

- ▶ It allowed for quick communication between poll workers in the field and line coordinators.
- ▶ Updates generate every 15 seconds allowing for faster response time.
- ▶ Application was successfully used in the 2018 Primary Election and is planned to be used in future elections.

The screenshot shows a web application titled "Vote Center Survey". It includes a dropdown menu to "Select a vote center" with "Bluffdale City Hall: 2222 W 14400 S" selected. Below this is a "Vote Center Location" section with a map showing a red pin at coordinates 40°29'N 111°57'W. Further down are input fields for "Date" (Wednesday, August 15, 2018) and "Time" (9:45 AM). The final section is a slider for "How long are the voters waiting in line?" with options: No Line, < 5 minute s, 5-15 minute s, 15-30 minute s, and Over 30 minute s. A green checkmark icon is at the bottom right.



2019 OPPORTUNITIES

The County and the Surveyor's Office have new opportunities for enhanced and more efficient services, collaboration, and improvement of GIS mapping.

Opportunities are available with the addition of:

- ▶ Unmanned Aerial System (UAS) collaboration and potential revenue
- ▶ Possible LiDAR acquisition
- ▶ High resolution aerial, oblique imagery 5 year County contract, joint project with Assessor
- ▶ Evolving partnerships with Metro Townships and County agencies

2019 AND FUTURE CHALLENGES

Labor and Salaries

- ▶ Shortage of skilled survey labor
- ▶ Difficulty in recruiting and retaining employees due to existing compression and elevated market salaries



2019 AND FUTURE CHALLENGES

Countywide Mapping and GIS

- ▶ Increased demand on existing resources, including internal and shared technology infrastructure.
- ▶ IT infrastructure, GIS licensing and other resources are needed to facilitate data driven decision making, effective mapping, and delivery of services.
- ▶ IT and GIS governance to ensure an appropriate level of uniformity and reduction of duplicative efforts.

2019 AND FUTURE CHALLENGES

Other Challenges

- ▶ Surveying Technology
 - ▶ Equipment
 - ▶ Training and Education
- ▶ Maintenance of the Public Land Survey System (PLSS)
 - ▶ County Surveyor maintains, inspects and is responsible for 19,000 PLSS control points in unincorporated County, 16 cities, 1 town and 5 Metro Townships.
 - ▶ Policing and tracking County wide development, road construction and utility work, which threaten the PLSS daily.

Resources are highly stressed, yet, there has been no increase in surveying personnel.