

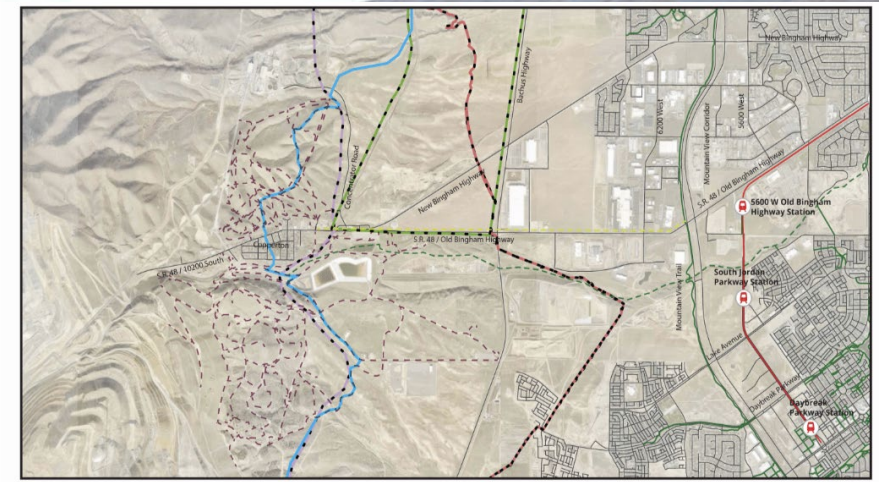
Copperton Park Upgrade Project — REQUESTED AMENDMENTS

Copperton Metro Township . March 2024



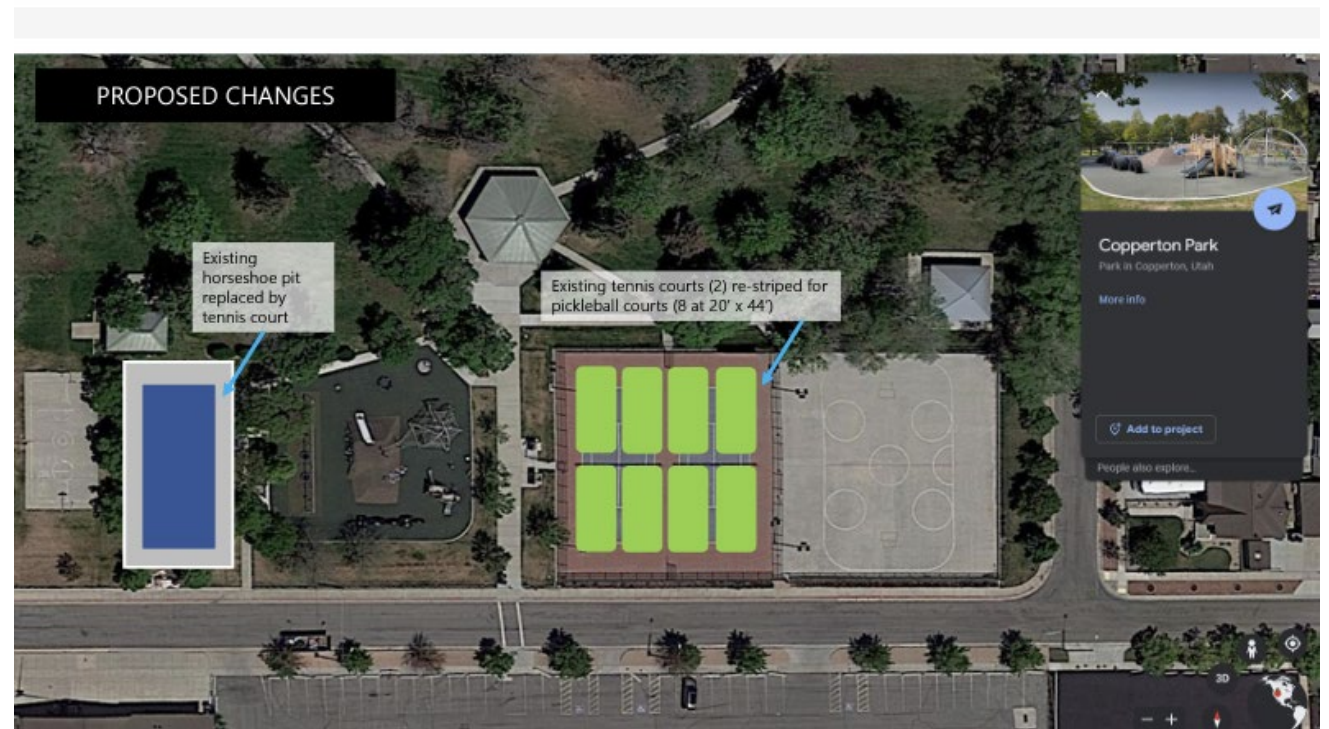
Park Significance

Copperton was first established as a company town for the Utah Copper Company. Copperton Park was dedicated in 1927, as the central recreational and meeting space for the community. Even still, this is where the community gathers for events and family outings. Children can walk or ride their bikes to various park amenities, without supervision. All Copperton residents live within 1/3 mile walking distance of the park.



Initial Project Scope

- Demolish the existing horseshoe pit and place one tennis court instead.
- Re-stripe the existing tennis courts (2) for pickleball courts (8).
- Retain the existing street hockey and multi-use space, which is frequently used by residents.
- We requested and received \$77,830 from the TRCC Program, for a total project budget of \$102,830.



What Changed?

- When working out final details for the project, one Councilmember became passionate about preserving the horseshoe pit. She asked us to look into alternatives, and other Council members got on board.
- At the same time, Copperton was completing its active transportation plan, which gave additional recommendations for Copperton Park (walkbikecopperton.org).
- Finally, Rio Tinto Kennecott began demolishing the rail switchyard south of Copperton and preserved railroad artifacts for our use throughout the community.



Expanded Opportunity

- Copperton is proposing a change to the project scope which allows the allocated TRCC funding to go even further

- Updated deliverables:

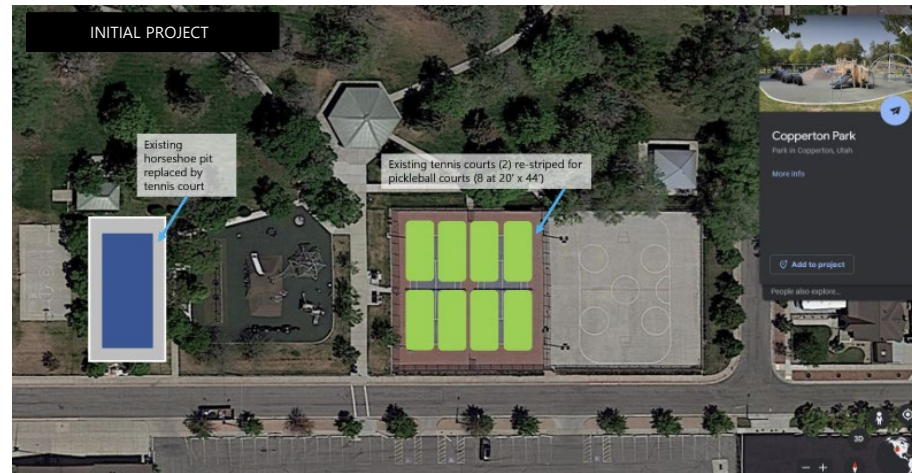
Preserve 1 existing tennis court

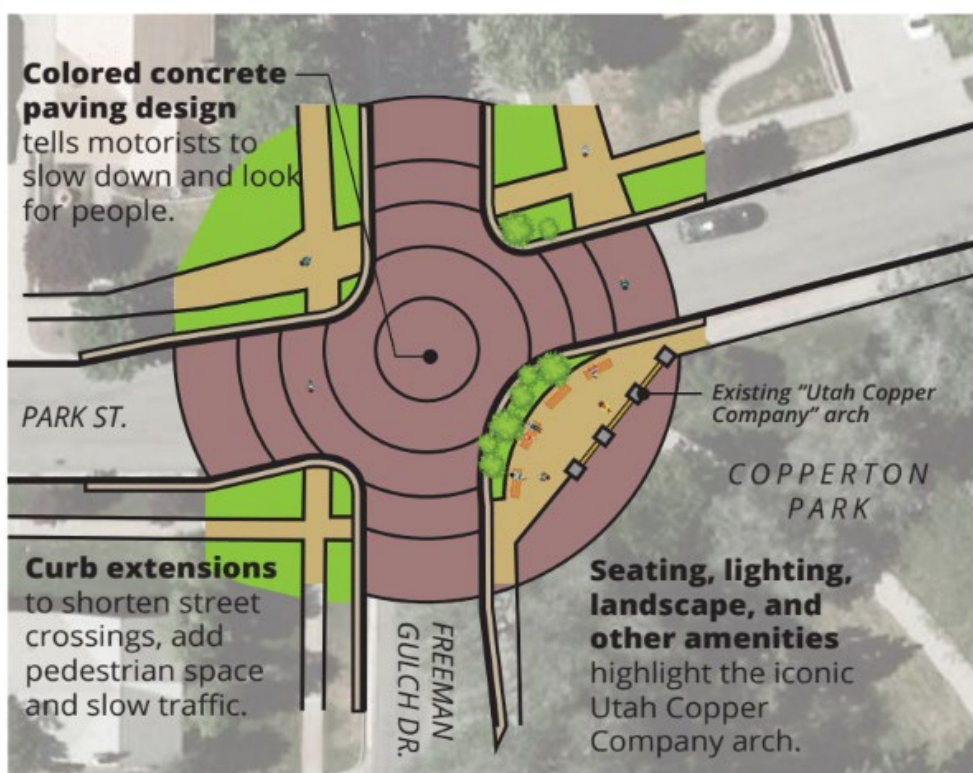
Add 4 new pickleball courts

Make gateway improvements to NW corner of park (trailhead tie-in)

Integrate 3 historic railroad pieces from Kennecott

- \$\$ saved by keeping the horseshoe pit funds other opportunities





Park Corners

Copperton Park is a beloved community place and the Utah Copper Company archway in the northwest corner is likely the most iconic landmark in town. This concept seeks to enhance this location by reducing the crossing distance to the park, helping to slow traffic, and converting extra asphalt into pedestrian space that celebrates community history and identity.



Questions?

Next Steps

1. Finalize scope (March)
2. Publish RFP (April)
3. Select contractor(s) and finalize designs (May / June)
4. Construct (Summer / Fall)
5. Finish Reporting (December)

Kayla Mauldin
Senior Long Range Planner
Greater Salt Lake Municipal Services District
KMauldin@msd.utah.gov

