

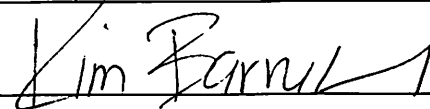
## Mayor's Office: Council Agenda Item Request Form

*This form and supporting documents (if applicable) are due the Wednesday before the COW meeting by noon.*

Date Received  
(office use)

Date of Request	4-3-18
Requesting Staff Member	Holly Yocom
Requested Council Date	4-10-18
Topic/Discussion Title	Community Services presentation of the proposed projects for the 2018 TRCC funding for council approval & updates on Bond Trial projects.
Description	<p>During the 2018 budget process the Salt Lake County Council set aside \$600,000 of TRCC funding to be spent on trails within Salt Lake County. The Council directed the Parks and Recreation staff to identify trails and bring back a proposal outlining the highest priority for funding for them to review and approval.</p> <p>Council also asked that we update them on the \$1M Bond funding for trails.</p>
Requested Action <sup>1</sup>	Approval of TRCC funding for the trails projects.
Presenter(s)	Holly M. Yocom - Community Services, Wayne Johnson - P&R
Time Needed <sup>2</sup>	NA
Time Sensitive <sup>3</sup>	No
Specific Time(s) <sup>4</sup>	No
Contact Name & Phone	Holly Yocom, x87052
Please attach the supporting documentation you plan to provide for the packets to this form. While not ideal, if supporting documents are not yet ready, you can still submit them by 10 am the Friday morning prior to the COW agenda. Items without documentation may be taken off for consideration at that COW meeting.	Recommendations for funding and mountain trail maps.

Mayor or Designee approval:



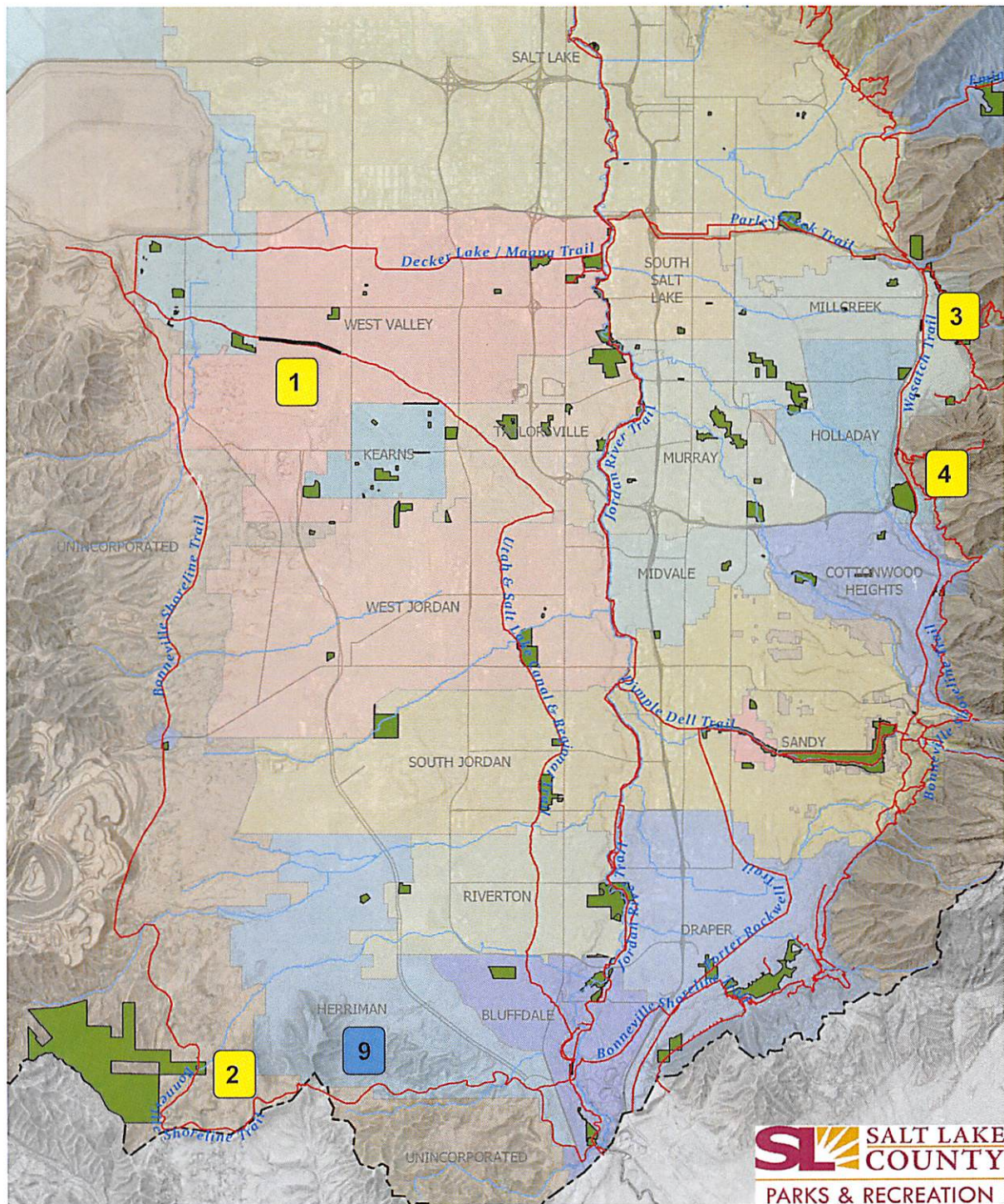
<sup>1</sup> What you will ask the Council to do (e.g., discussion only, appropriate money, adopt policy/ordinance) – in specific terms.

<sup>2</sup> Assumed to be 10 minutes unless otherwise specified.

<sup>3</sup> Urgency that the topic to scheduled on the requested date.

<sup>4</sup> If important to schedule at a specific time, list a few preferred times.

## Trails - Proposed Projects - \$600,000 TRCC Funds

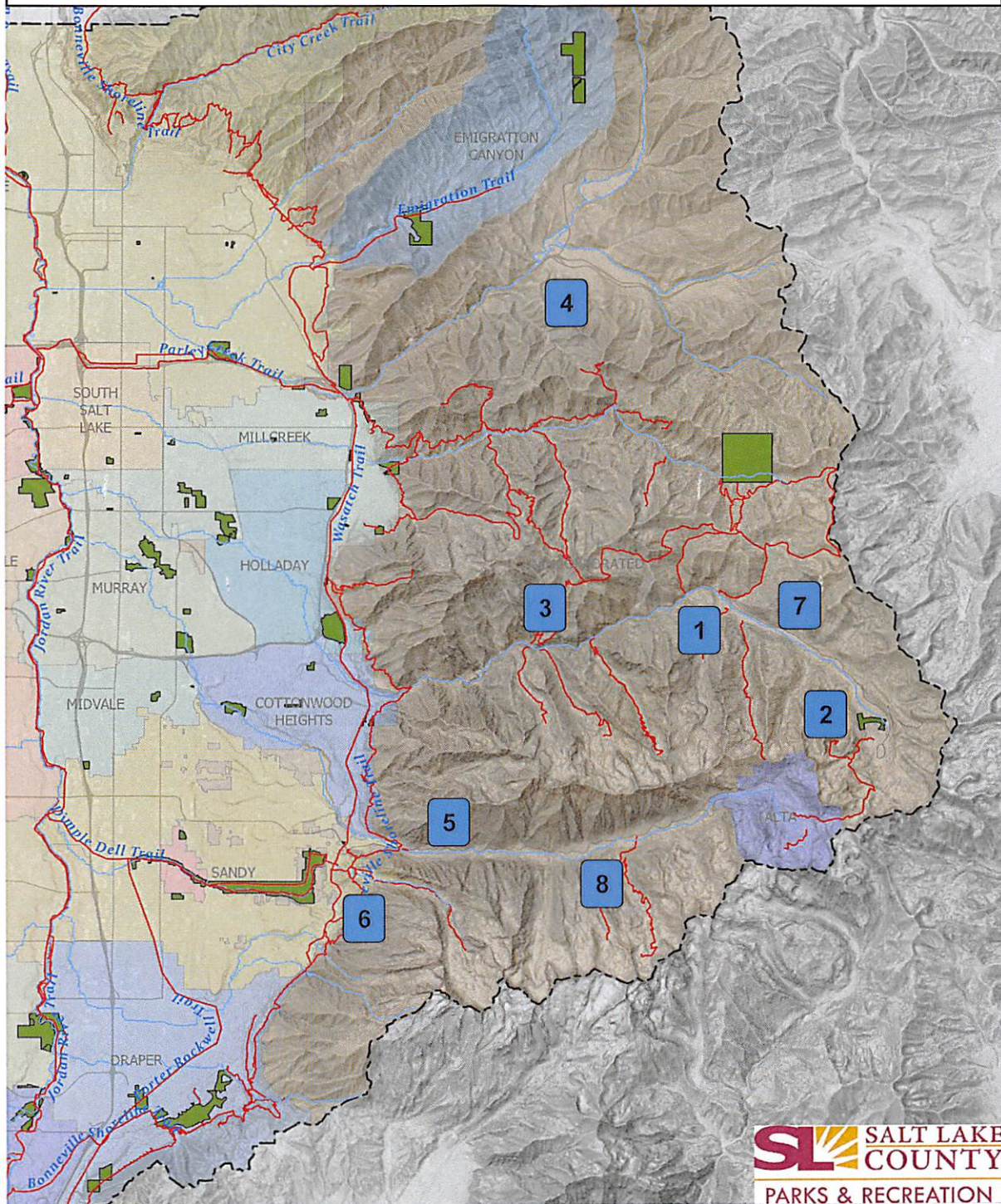


### Proposed Projects - Location and Description

- |                                                                                                                                                                                                           |                                                                                                    |
|-----------------------------------------------------------------------------------------------------------------------------------------------------------------------------------------------------------|----------------------------------------------------------------------------------------------------|
| <p><b>1</b> <b>Utah &amp; Salt Lake Canal Trail</b> - Extend existing trail from 5600 W, 1.75 miles to 7200 W.</p>                                                                                        | <p><b>4</b> <b>Dog Lake Trail</b> - Heavy maintenance and repair.</p>                              |
| <p><b>2</b> <b>Rose &amp; Yellow Fork Canyon Trails</b> - Expansion and upgrade of existing trailhead. Add trail wayfinding signage.</p>                                                                  | <p><b>9</b> <b>Bonneville Shoreline Trail/Herriman</b> - New construction of 4 miles of trail.</p> |
| <p><b>3</b> <b>Big Water to Elbow Fork Trail</b> - New 4 mile trail section to reduce recreational bike and vehicle conflicts after bikes transition from the Wasatch Crest Trail to Millcreek Canyon</p> |                                                                                                    |



# Mountainous Trails Proposed Projects - \$1,000,000 Bond Funds



## Proposed Projects - Location and Description

- |                                                                                                                                                                                                               |                                                                                                                               |
|---------------------------------------------------------------------------------------------------------------------------------------------------------------------------------------------------------------|-------------------------------------------------------------------------------------------------------------------------------|
| <p><b>1</b> <b>Cardiff By-Pass Trail</b> - Address safety concern of users hiking along the road when Donut Falls Trailhead is full. This 3 mile trail will connect BCC parking to Donut Falls trailhead.</p> | <p><b>5</b> <b>Gate Butress</b> - Grant to Climbers Alliance to do work on the Gate Butress climbing area.</p>                |
| <p><b>2</b> <b>Silver Lake Trail</b> - Reconstruct boardwalk, piers, decking, and trails.</p>                                                                                                                 | <p><b>6</b> <b>Bonneville Shoreline Trail</b> - Land acquisition and trail development for additional BST trail segments.</p> |
| <p><b>3</b> <b>Mill B North Trail</b> - 10 year heavy maintenance, waterbreak repair to increase safety.</p>                                                                                                  | <p><b>7</b> <b>Wasatch Crest Trail</b> - Heavy maintenance and repair along several sections of the trail.</p>                |
| <p><b>4</b> <b>Mormon Pioneer Trail</b> - Re-route trail to prevent vegetation damage, erosion, and to protect water quality in Mountain Dell Reservoir.</p>                                                  | <p><b>8</b> <b>Red Pine Trail</b> - Heavy maintenance and repair along one section of the trail.</p>                          |



## Cost Estimates to Develop Mountain and Urban Trails

Clearance	Mountain Trails	Miles	Total Project Cost	Salt Lake County Contribution	Matching Funds Available	Comments	Partners
NEPA READY	Silver Lake Trail	0.25	\$100,000	\$100,000	\$0	Primitive trail - Big Cottonwood Canyon	
NEPA READY	Cardiff By-Pass Trail	1.40	\$525,000	\$425,000	\$100,000	Primitive trail - Big Cottonwood Canyon	RTP; Cottonwood Canyons Foundation
NEPA READY	Mill B North Trail	3.50	\$151,900	\$25,000	\$15,000	Primitive trail - Big Cottonwood Canyon	REI; Cottonwood Canyons Foundation
NEPA READY	Rose & Yellow Fork Canyon Trails	0.00	\$125,000	\$125,000	\$0	New parking lot trail head / trail signage	
NEPA READY	Mormon Pioneer Trail	5.00	\$111,000	\$20,000	\$91,000	Trail reroute / Improvements	Salt Lake City
NEPA READY	Gate Buttress	1.00	\$165,000	\$25,000	\$130,000	Trail reroute / Improvements	Climber's Alliance; GOED
NEPA READY	Bonneville Shoreline Trail	48.75	\$2,437,500	\$255,000	\$0	8 new segments of BST (Parley's to Magna)	
NEPA REQ'D	Dog Lake Trail	2.50	\$75,000	\$25,000	\$0	Primitive trail - Big Cottonwood Canyon	RTP grant to be submitted
NEPA REQ'D	Big Water to Elbow Fork Trail	3.00	\$150,000	\$50,000	\$100,000	Primitive trail - Millcreek Canyon	Millcreek; Cottonwood Canyons Fnd.
NEPA REQ'D	Wasatch Crest Trail	5.00	\$120,000	\$78,000	\$5,000	Primitive trail - multiple Canyons	CCF; Trails Utah
NEPA REQ'D	Red Pine Trail	2.00	\$115,000	\$62,000	\$5,000	Primitive trail - Millcreek Canyon	Cottonwood Canyons Foundation
N/A	Trail Signage	-	\$10,000	\$10,000	\$5,000	Trail signage as needed	
<b>Mountain Trails Total Estimate</b>		<b>72.40</b>	<b>\$4,085,400</b>	<b>\$1,200,000</b>	<b>\$451,000</b>		

Clearance	Urban Trails	Miles	Total Project Cost	Salt Lake County Contribution	Matching Funds Available	Comments	Partners
NEPA READY	Utah & Salt Lake Canal Trail (TRCC)	21.60	\$14,000,000	\$400,000	\$150,000	Several segments from Utah County Line to Magna	West Valley City; RTP
NEPA REQ'D	Salt Lake City - Corridor A	10.00	\$25,000,000	\$0	\$0	Salt Lake City to Great Salt Lake	
NEPA REQ'D	Parley's to Magna - Corridor B	11.00	\$15,000,000	\$0	\$0	Jordan River to Magna (Extension of Parley's Trail Corridor)	
NEPA REQ'D	Holladay / Taylorsville - Corridor C	15.00	\$32,000,000	\$0	\$0	Wasatch Mnts to Oquirrh Mountains	
NEPA REQ'D	Sandy / South Jordan - Corridor D	12.00	\$15,000,000	\$0	\$0	Wasatch Mnts to Oquirrh Mountains	
NEPA REQ'D	Draper / Butterfield - Corridor E	8.00	\$6,209,502	\$0	\$0	Wasatch Mnts to Oquirrh Mountains	
<b>Urban Trails Total Estimate</b>		<b>222.15</b>	<b>\$107,209,502</b>	<b>\$400,000</b>	<b>\$150,000</b>		

## Recommendation for Design & Construction

### Clearance \$600,000 TRCC FUNDING (West SLCo. Trails)

NEPA READY	Utah & Salt Lake Canal Trail	\$400,000
NEPA READY	Rose & Yellow Fork Canyon Trails	\$125,000
NEPA REQ'D	Big Water to Elbow Fork Trail (NEPA Study)	\$50,000
NEPA REQ'D	Dog Lake Trail	\$25,000
		<b>\$600,000</b>

### \$1,000,000 BOND FUNDING (Mountain Trails)

NEPA READY	Cardiff By-Pass Trail	\$425,000
NEPA READY	Silver Lake Trail	\$100,000
NEPA READY	Mill B North Trail	\$25,000
NEPA READY	Mormon Pioneer Trail	\$20,000
NEPA READY	Gate Buttress	\$25,000
NEPA READY	Bonneville Shoreline Trail	\$255,000
NEPA REQ'D	Wasatch Crest Trail	\$78,000
NEPA REQ'D	Red Pine Trail	\$62,000
N/A	Trail Signage	\$10,000
		<b>\$1,000,000</b>