

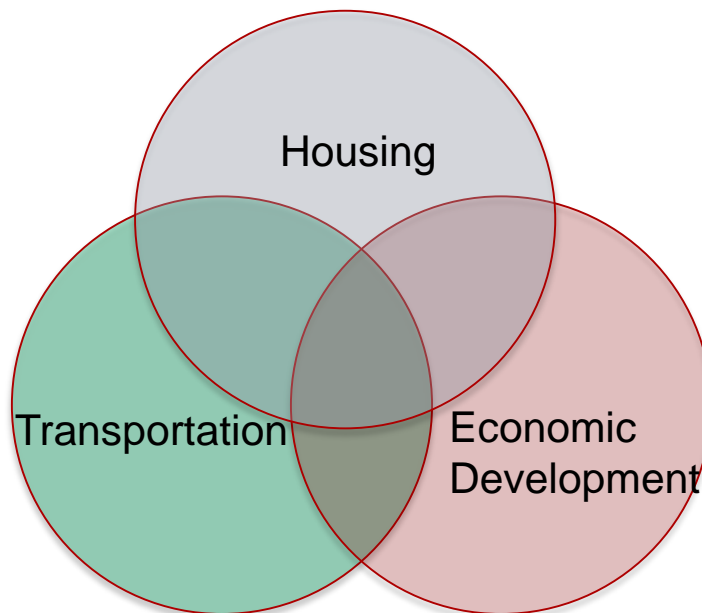
# Department of Regional Transportation, Housing & Economic Development

2017 Overview

# *What happened to the office formerly known as Regional Development (ORD) ?*

2017 Re-structure:

- ~~Emergency Services~~
- ~~Special Projects & Grants~~
  - ~~Homelessness~~
- ~~CJAG~~
- Economic Development
- Planning & Transportation
- Housing & Community Development  
(formerly known as CRD)
- Visit Salt Lake
- South Towne Expo Center
- Salt Palace Convention Center

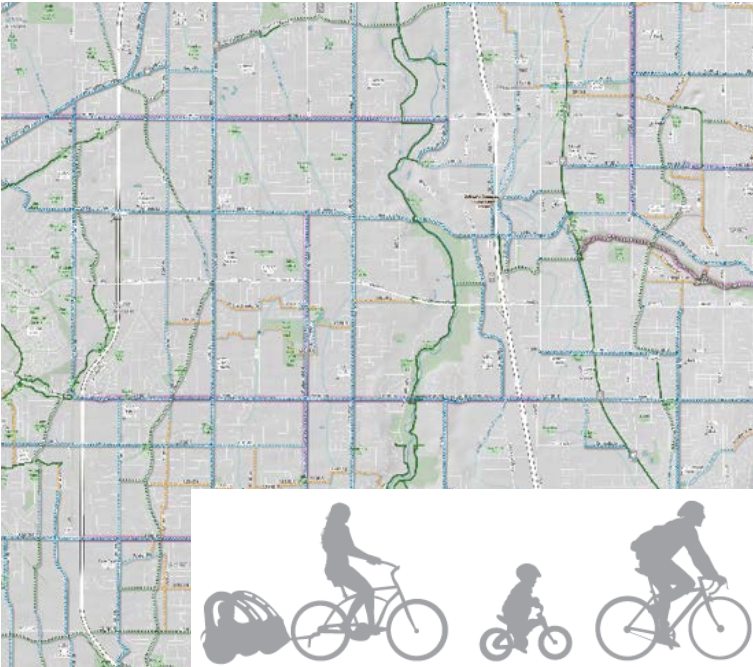


or “*THE*” Department

Department of Regional *T*ransportation, *H*ousing & *E*conomic  
Development

# Countywide Bike Plan Complete

*ATIP: Active Transportation Implementation Plan*



Building Safe & Connected Bike Routes Countywide



## CATNIP Grants

- Funds assist communities w/ bikeway improvements
- Priority goes to projects identified on ATIP

Letter of intent due: October 13, 2017



## Corridor Preservation



- \$10 vehicle registration fee/\$3 goes into this fund
- Funds used for transportation corridors that include a road

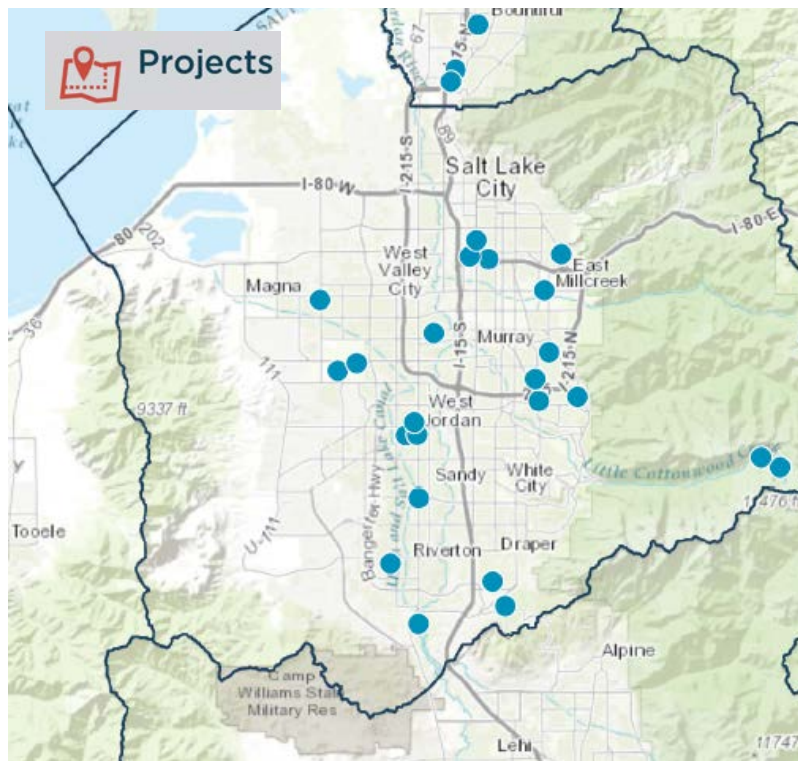
Applications due: November 17, 2017



## County Resource Management Plan Complete



## Transportation Land Use Connection



# Impact



## Homeless Services

- 955 individuals received rental assistance



## Housing Preservation & Rehabilitation

- 310 homes were improved



## Community & Support Services

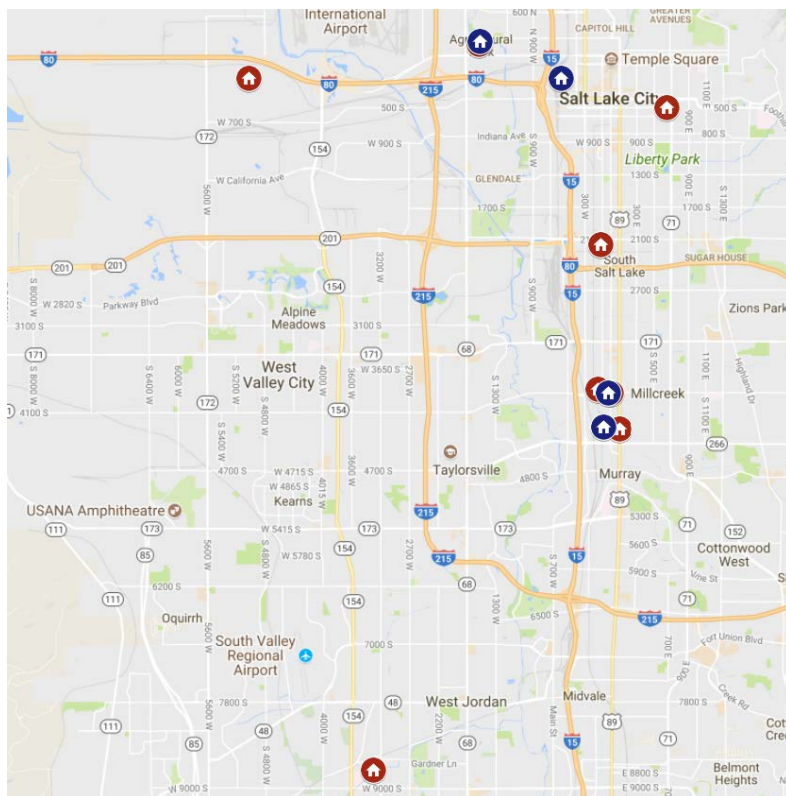
- 11,290 individuals received services



## Facility & Infrastructure Improvements

- 10 facility infrastructure improvements completed

# Affordable Housing Projects



## Address (# of units):

### 822 units -HOME Housing Fund

- 3350 S 150 W (58)\*\*
- 650 E 500 S (52)
- 2160 S West Temple (100)
- 211 North Cornell Street (146)
- 3844 South Temple (89)
- 106 W Fireclay Avenue (136)
- 8759 South 3400 W (96)
- 3900 S Main Street (145)\*

\* - pending

\*\* - Sharon Gardens, public open house Oct. 12<sup>th</sup> from 10:30am - Noon

### 549 units -TOD Loan Fund

- 7200 S 4800 W
- 400 S 500 E
- Denver Street
- 155 S 600 W

# Strategies



## HUD Housing Partnership

- *Assist developers with gap financing to produce housing after tax credits and other sources of funding & grants have been provided to the projects*



## Housing Preservation

- *Rehab of single & multi-family housing units*
- *Healthy Homes (includes Lead Safe Housing Program)*
- *Aging in place and emergency repairs*



# New Mechanism for Affordable Housing

## August 2017

- County Council approved voluntary mechanism to direct tax increment housing funds through a partnership with the Salt Lake County Housing Authority

\$ available in open RFA  
(similar to HOME funds)



Affordable Housing Set Aside  
from Tax Increment Project  
Areas

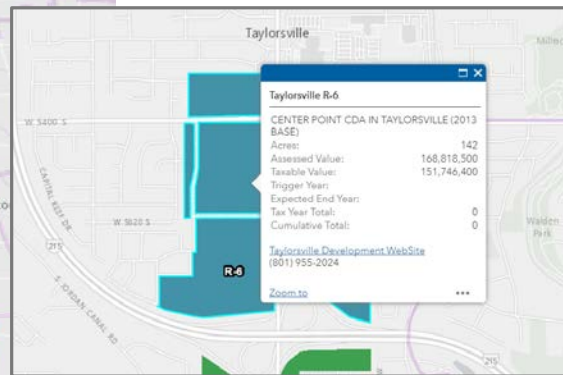
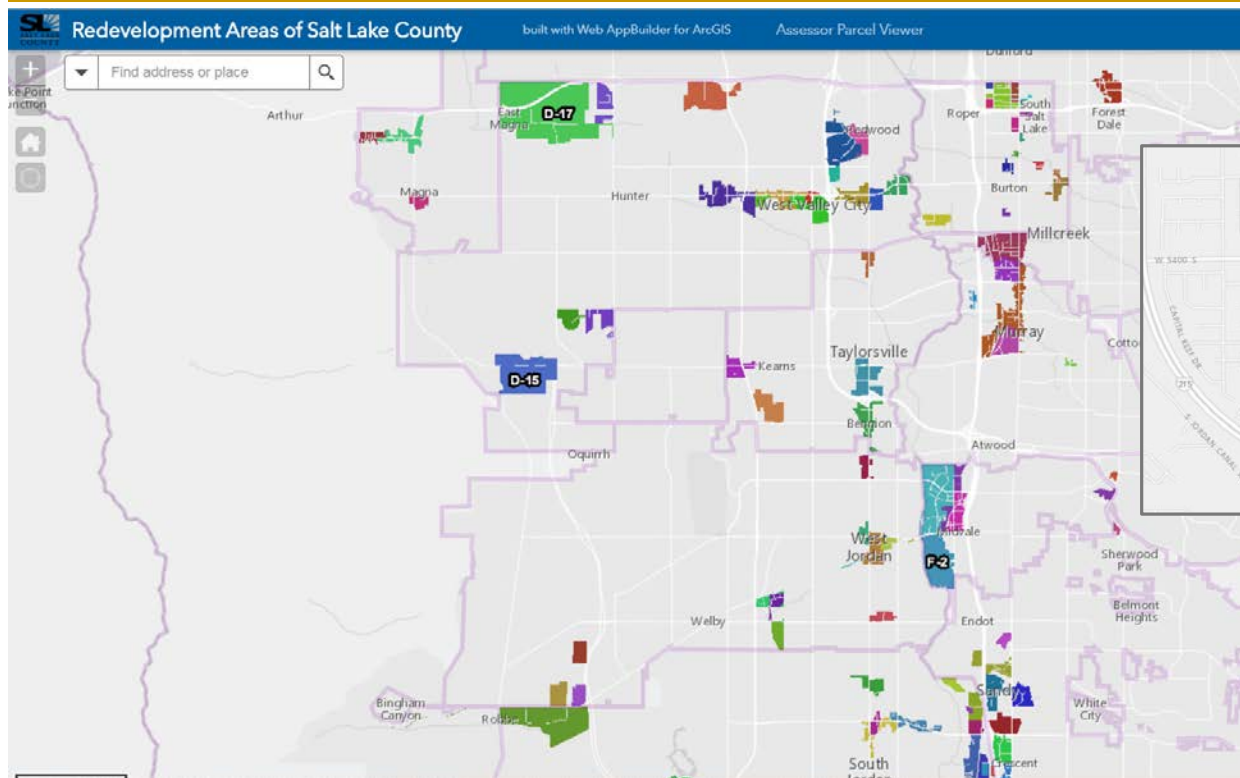


Pass through Housing  
Authority of SLCo



Housing Trust Fund

# RDA Database



Database developed in partnership  
w/ Salt Lake County Assessor,  
Surveyor, & Auditor

# Global Trade & Investment Plan



# Business Outreach

## Interviewing Small-to-Medium Sized Businesses

- 107 appointments made
- 65 interviews complete
- Goal: 600 interviews by April 2018
- Businesses are industry specific & selected by size & NAICS codes



Once data is collected, plan to host small business forum in summer of 2018

- Workshops will be tailored around survey results



September 11-12, 2017



Hosted 2-day Chamber Education Series:  
University of Notre Dame trained chamber leaders  
on creating capacity within their organizations



# Venue Highlights

## Salt Palace Convention Center



- Average 40+ events per quarter
- ≈ 12 events of 8,000+ attendees
- Largest convention has 30,000+ attendees

### *Business mix includes:*

National association conventions, direct sales conventions, corporate and government meetings, sporting competitions & public shows

## South Towne Expo Center



- Diverse portfolio of events
- 198 events as of September 30<sup>th</sup>, 2017
- 2016 Attendance #s: 769,393
- 2017 #s...as of June 30<sup>th</sup>: 390,357

# Level 1 Sustainability Certification

## APEX/ASTM



- Year to date waste diversion rate is 38% (2<sup>nd</sup> quarter achieved over 50%), saved 324 metric tons of carbon emissions in 2017
- YTD: 180,000 lbs. of products left over from events donated for repurposing

*Recipients: ReStore/Habitat for Humanity, Camp Hobe (for children w/ cancer), Salt Lake Education Foundation, Granite School District, Calvary Thrift Store*



# The Year We Lost Future OR Shows

## What it means for the future

- Relationship with Emerald Expositions one of North America's largest trade show and convention producers

## Projected Impact on 2018 - \$14 million loss in Hotel Revenue

- 1<sup>st</sup> Quarter will be impacted well into the future
- 3<sup>rd</sup> Quarter strong opportunity to replace OR





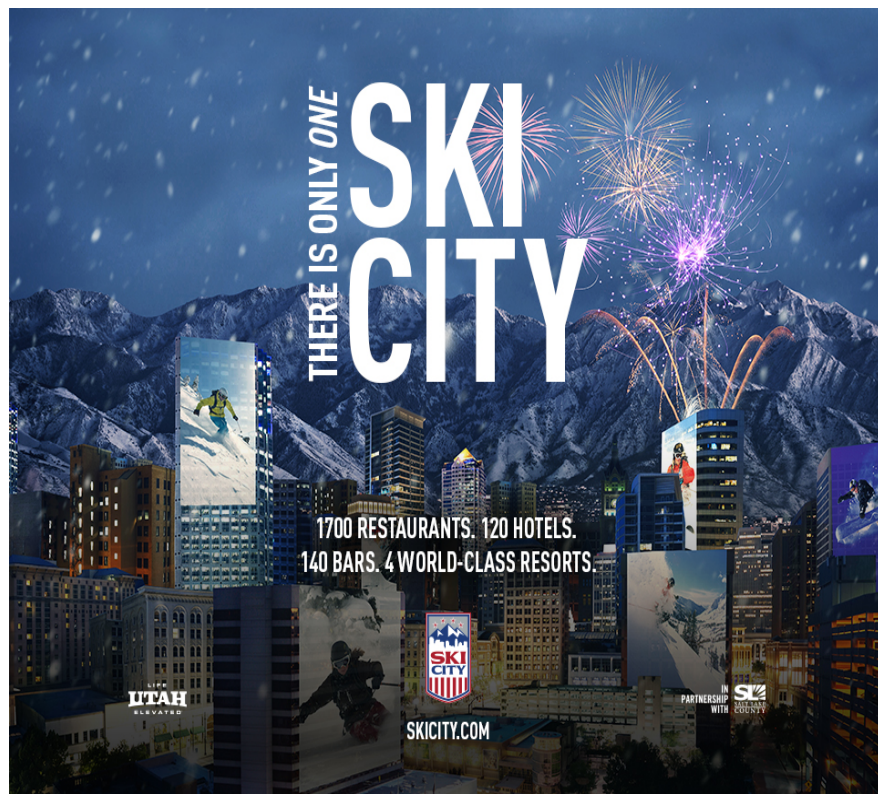
# Record Year: Transient Room Tax



- Projected 9% increase over 2016, an all time record for hotel revenue and TRT collections
- Budget Impact 2018, absorbing the loss of OR



# Ski City



- Record year for skier visits in Utah and our local Ski City Resorts of Alta, Brighton, Snowbird and Solitude
- Record year for Ski City Super Pass Sales
  - 42% YOY Increase in skiers day
  - 52% increase in revenue

# Thank You!