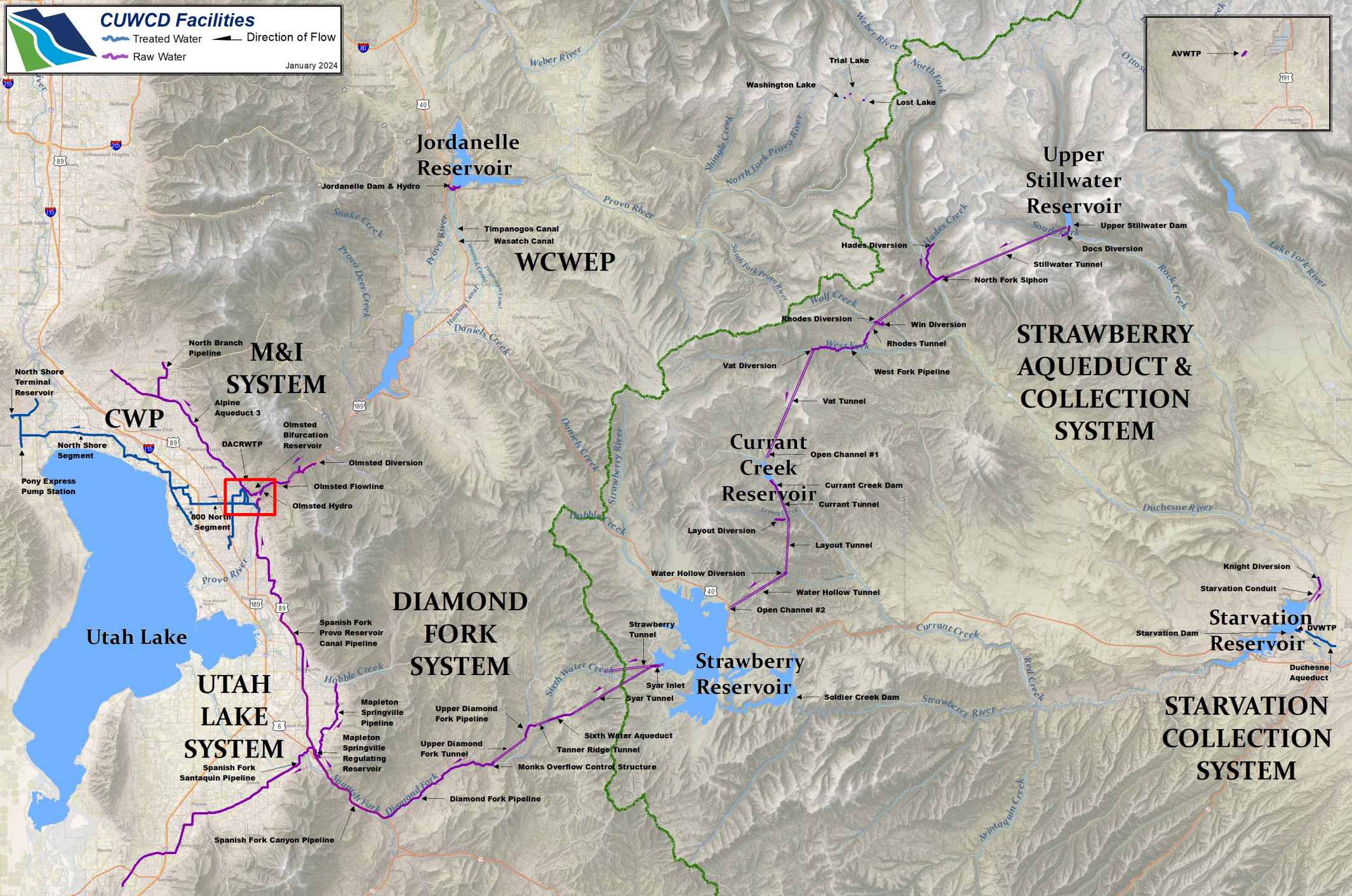




CENTRAL UTAH WATER

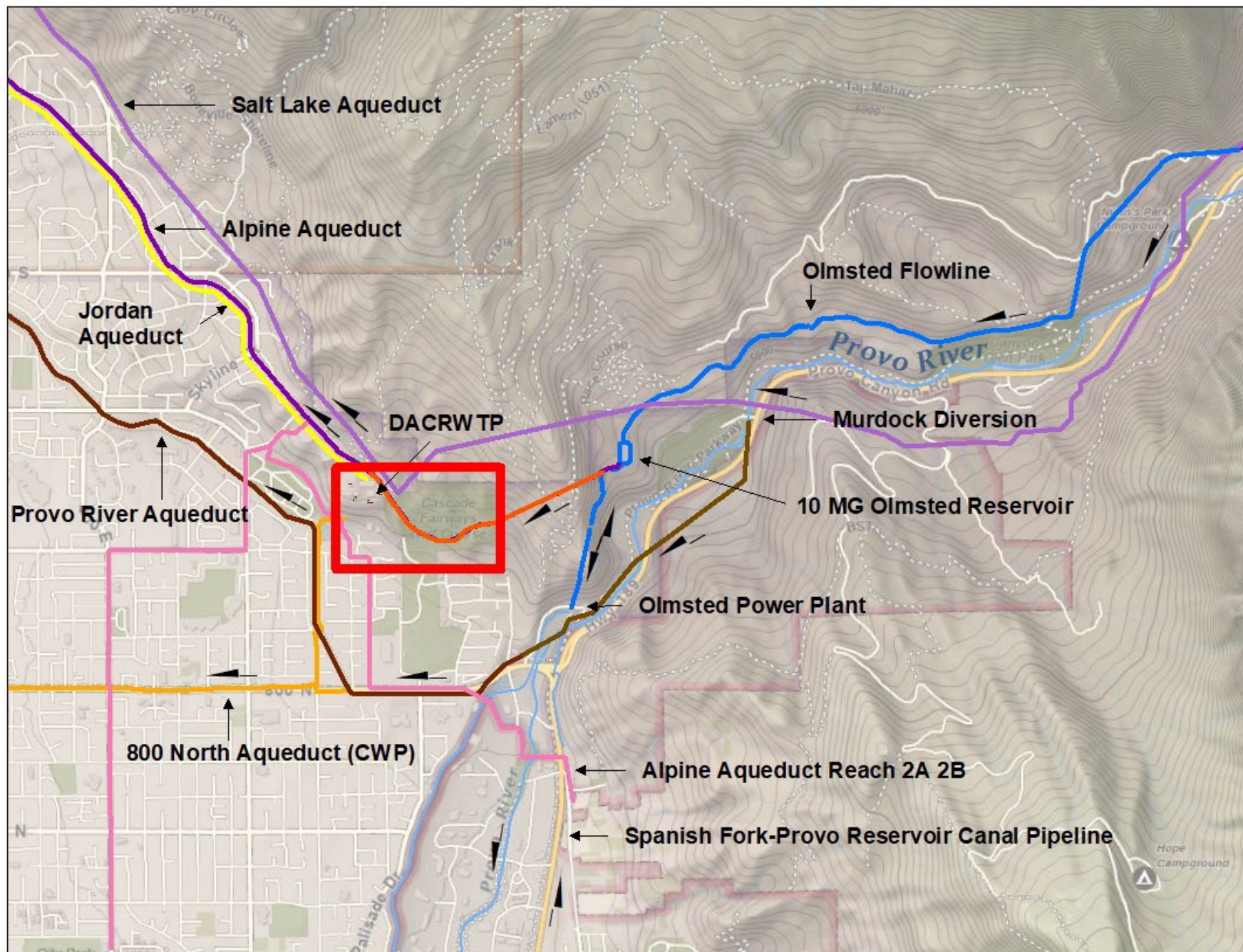
Truth in Taxation Salt Lake County Report

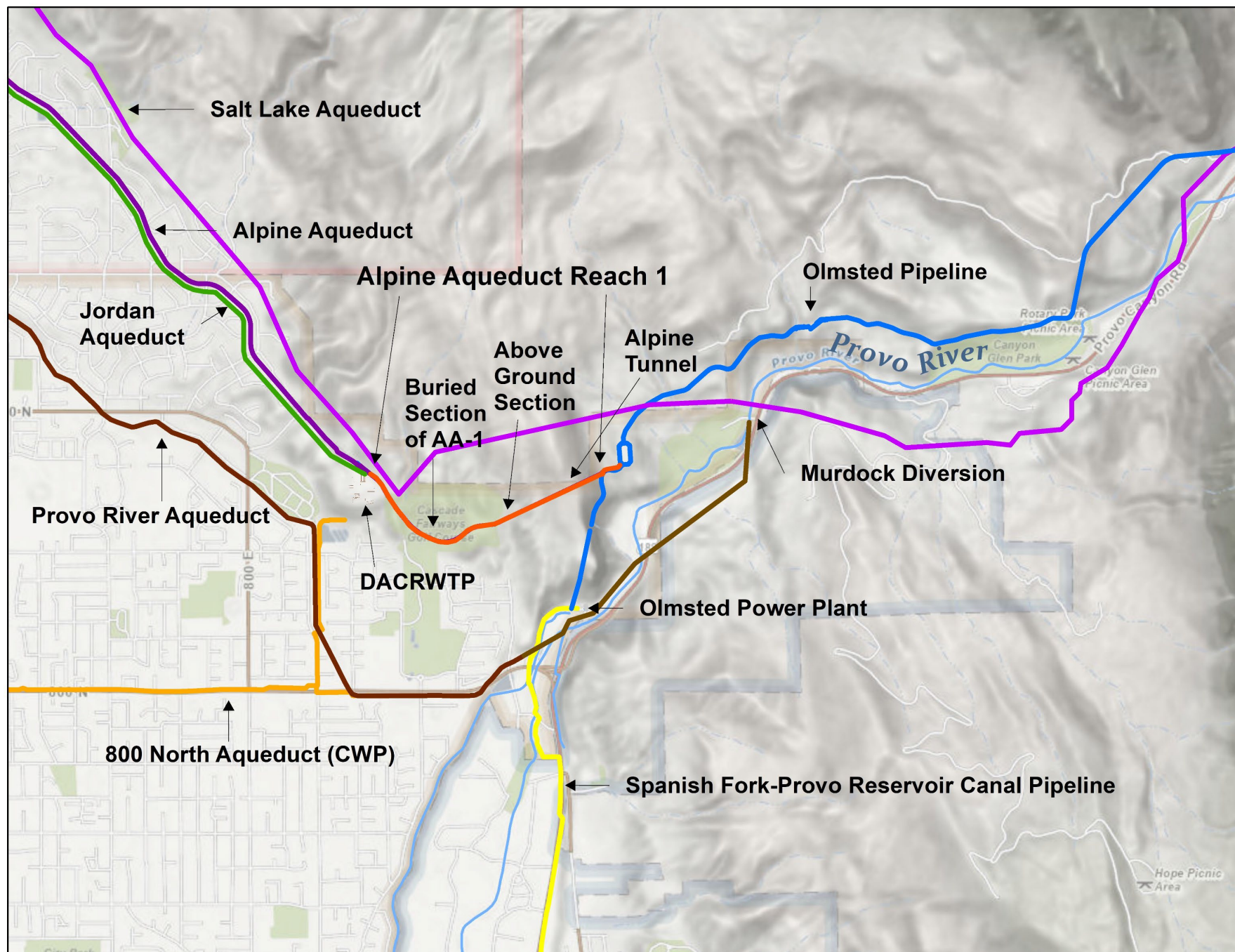
Fiscal Year 2024-2025

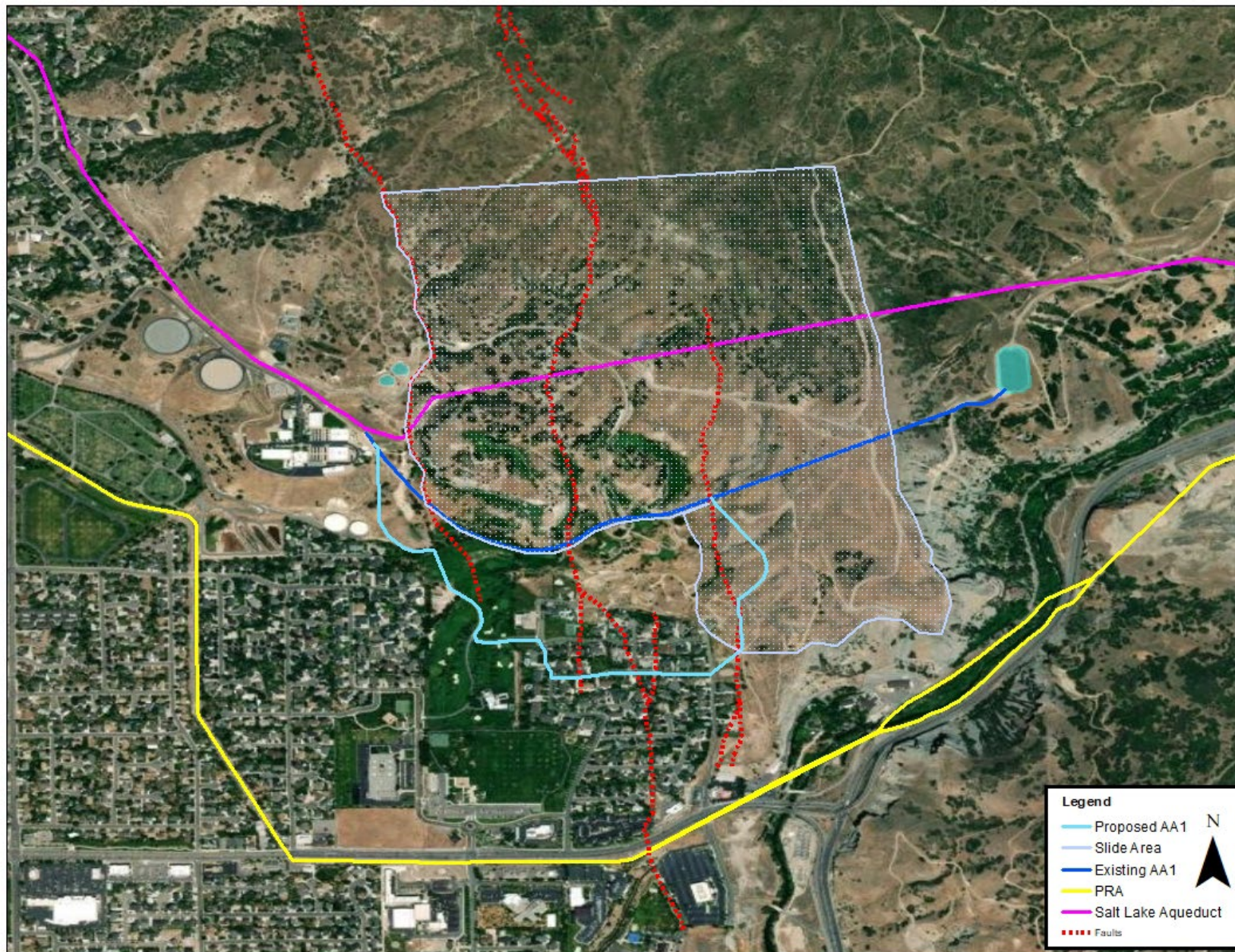


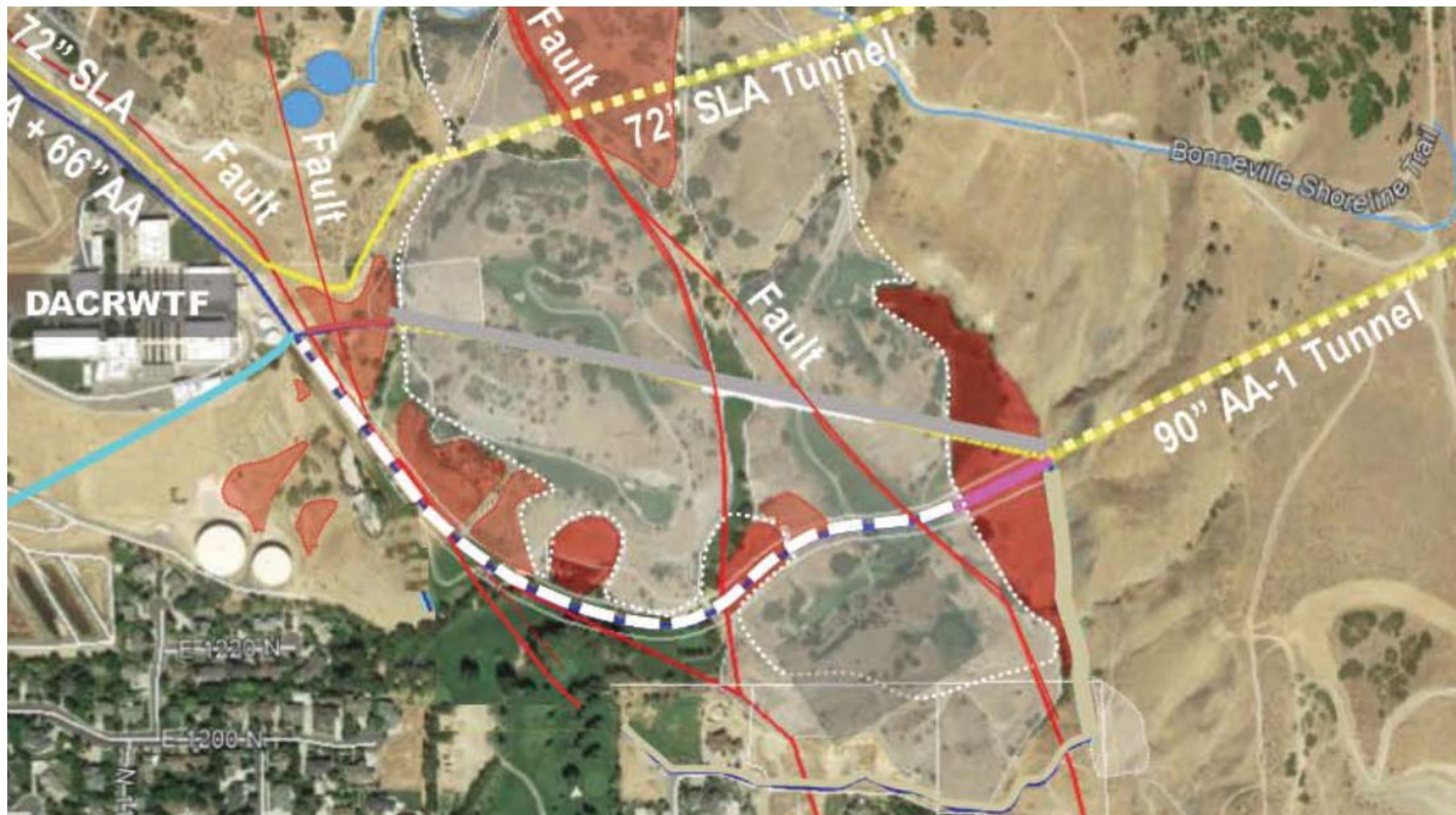












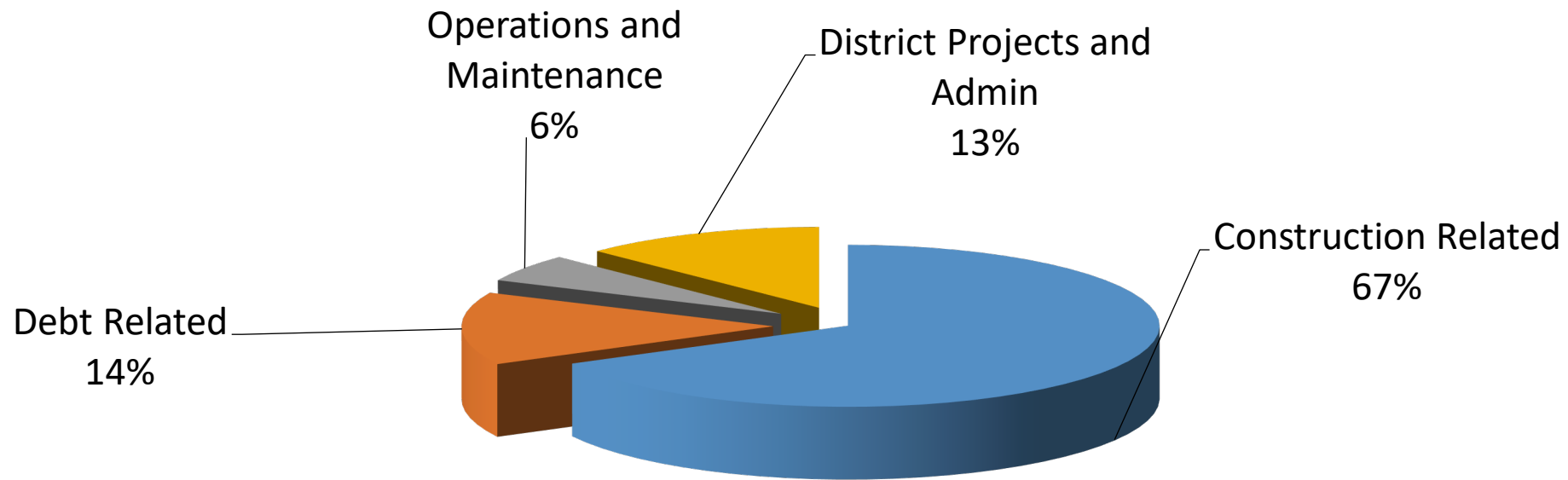


Certified Rate vs. Authorized Rate Tax Revenue

	FY 2024-2025 Certified 0.000380	FY 2024-2025 Authorized 0.0004	Difference
AD-Valorem Taxes	\$111.1 Million	\$116.9 Million	\$5.8 Million

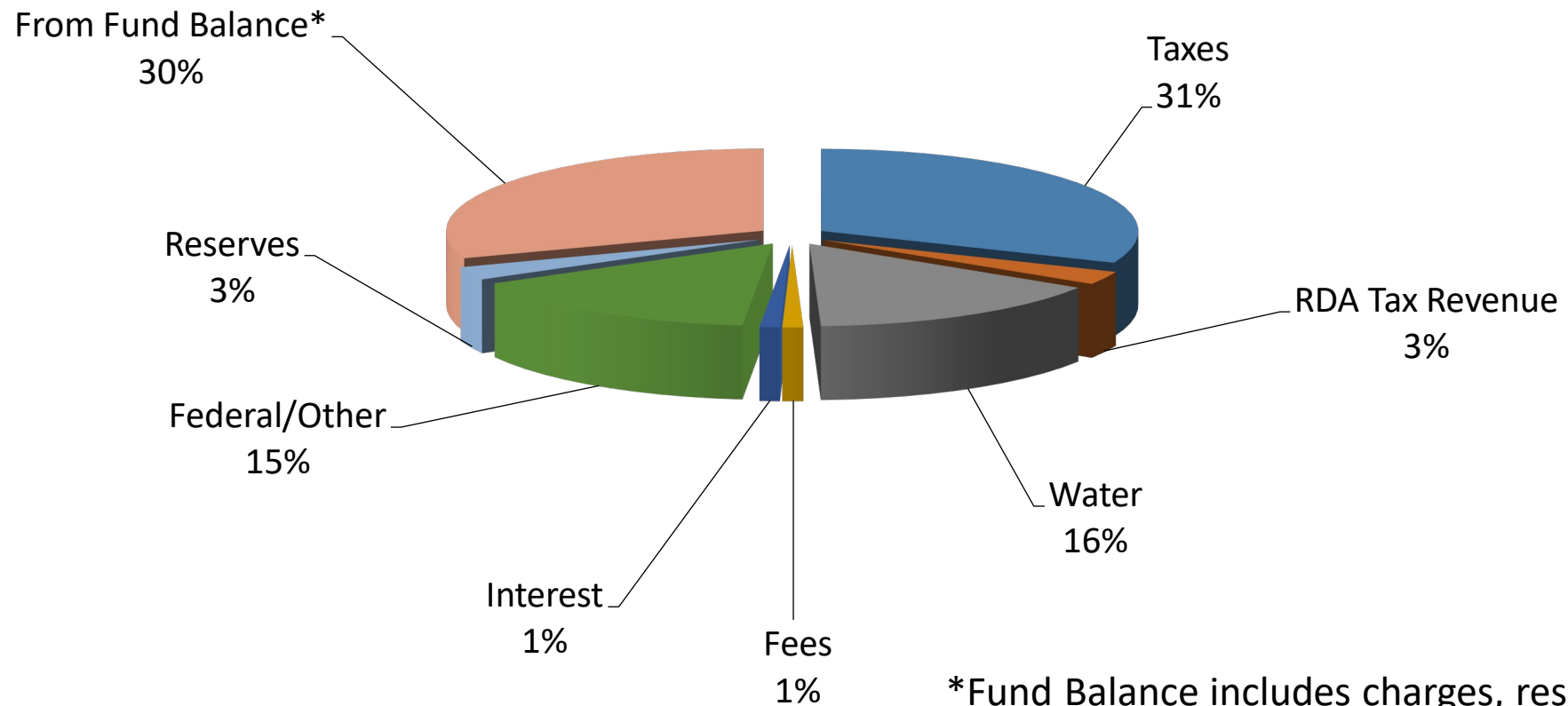


FY 2024-2025 Expenditures Budget Overview



FY 2024-2025 Revenues

Budget Overview



*Fund Balance includes charges, reserves, federal and other funds accumulated in bank accounts at the beginning of the fiscal year.



What Will this Cost an Average Household?

- Average Household Value in Salt Lake County
 - \$602,000 Home
 - Certified Rate estimated at $0.000380 = \$125.82$
 - Proposed Rate of $0.0004 = \$132.44$
 - **\$6.62 (5%) annual tax increase to maintain the rate at 0.0004**
 - **(\$0.55 per month)**



Meetings and Hearings

- Truth in Taxation Public Hearings
 - August 26th in Roosevelt – 6pm
 - August 27th in Orem – 6pm
- Final Budget Hearing
 - August 28th Board Meeting – 1pm



