

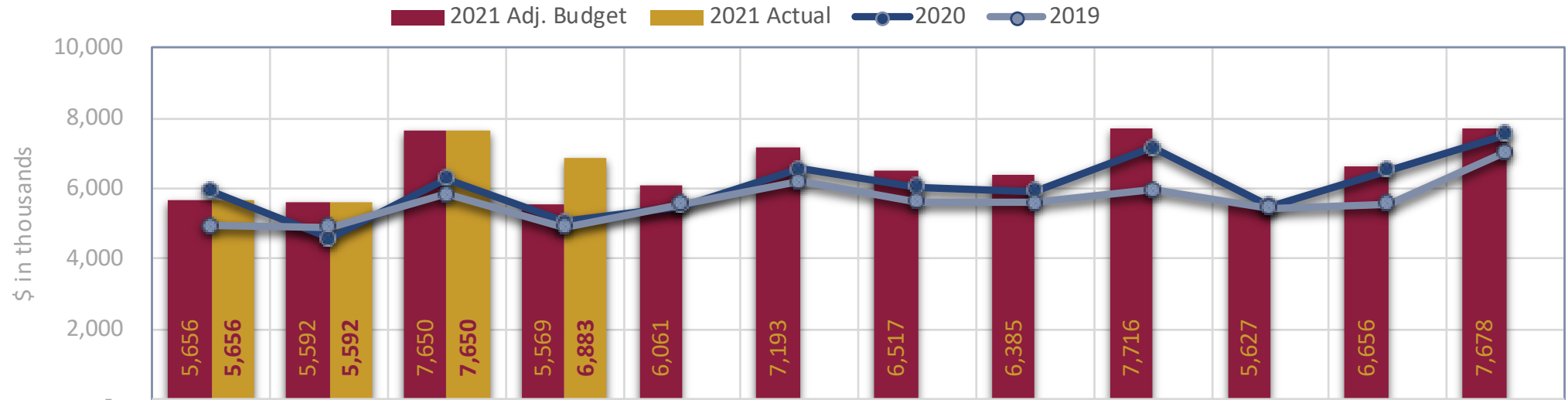
Sales Tax Revenue Results

From June 21, 2021 Monthly Distribution

July 20, 2021 Council Work Session

County Option Sales Tax

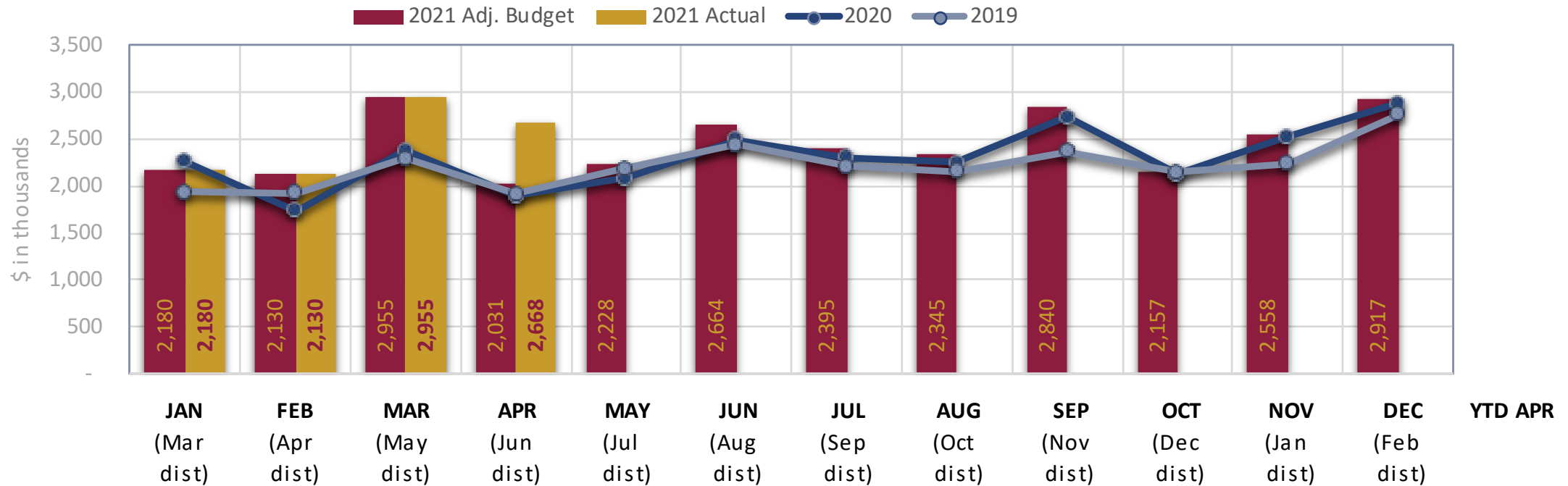
(0.25% tax — to General Fund)



		JAN (Mar dist)	FEB (Apr dist)	MAR (May dist)	APR (Jun dist)	MAY (Jul dist)	JUN (Aug dist)	JUL (Sep dist)	AUG (Oct dist)	SEP (Nov dist)	OCT (Dec dist)	NOV (Jan dist)	DEC (Feb dist)	YTD APR
<i>Variances:</i>														
'21 Actual vs. Budget	\$	-	-	-	1,314									1,314
'21 vs. '20	\$	(265)	1,026	1,373	1,818									3,952
	%	(4.5%)	22.5%	21.9%	35.9%									18.1%
'21 vs. '19	%	14.6%	14.1%	30.9%	40.7%									25.3%

Zoo, Arts, & Parks Tax

(0.1% tax to ZAP Fund and General Fund*)



Variations:

		JAN (Mar dist)	FEB (Apr dist)	MAR (May dist)	APR (Jun dist)	MAY (Jul dist)	JUN (Aug dist)	JUL (Sep dist)	AUG (Oct dist)	SEP (Nov dist)	OCT (Dec dist)	NOV (Jan dist)	DEC (Feb dist)	YTD APR
'21 Actual vs. Budget	\$	-	-	-	637									637
'21 vs. '20	\$	(85)	387	574	770									1,647
	%	(3.7%)	22.2%	24.1%	40.6%									19.9%
'21 vs. '19	%	12.4%	10.9%	28.6%	39.3%									23.0%

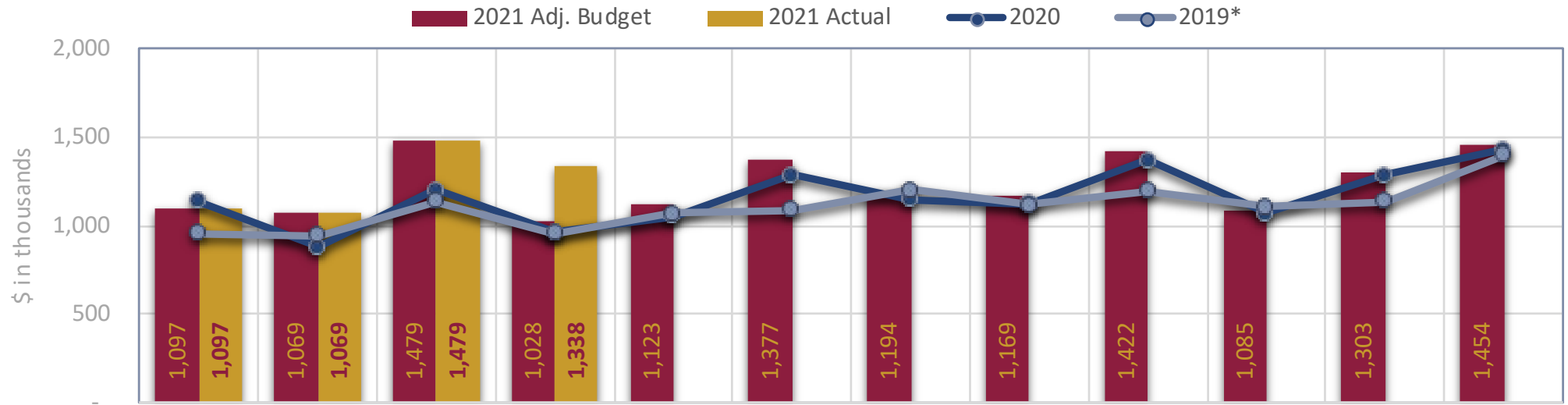
* Approximately 70.5% to ZAP fund and 29.5% to General Fund for Recreation

Sales tax data is available from the State Tax Commission on a two-month lag. The Budget shown is the 2021 Adjusted Budget.



Transportation Sales Tax

(20% of 0.25% tax to Transportation Fund)



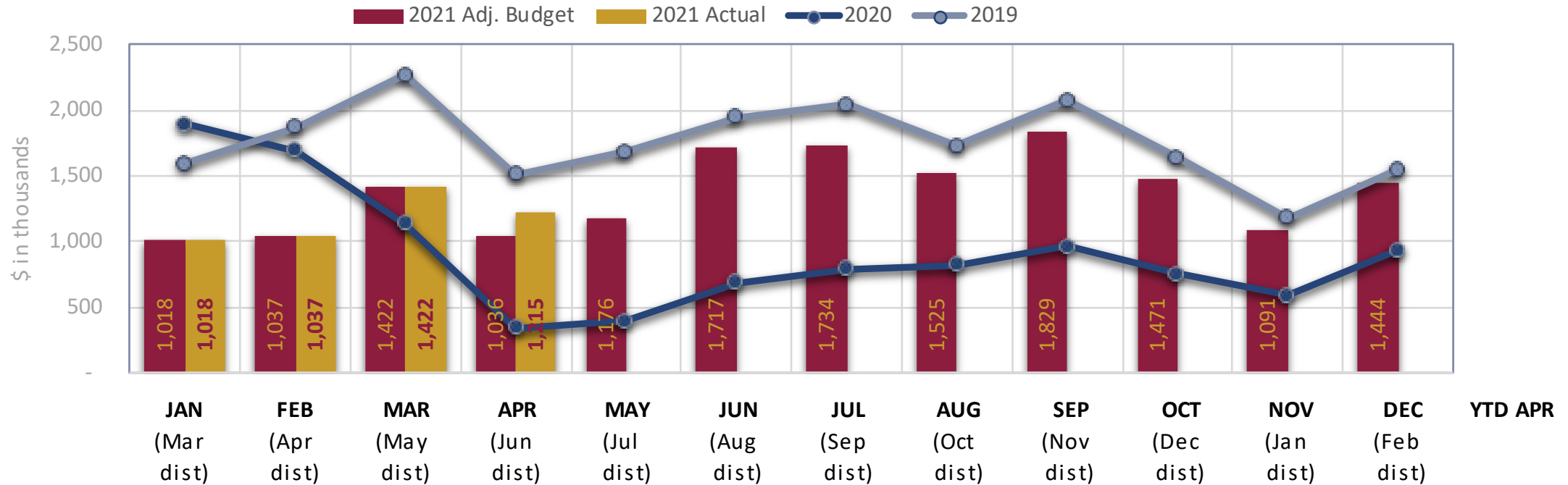
	JAN (Mar dist)	FEB (Apr dist)	MAR (May dist)	APR (Jun dist)	MAY (Jul dist)	JUN (Aug dist)	JUL (Sep dist)	AUG (Oct dist)	SEP (Nov dist)	OCT (Dec dist)	NOV (Jan dist)	DEC (Feb dist)	YTD APR
<i>Variances:</i>													
'21 Actual vs. Budget	\$ -	\$ -	\$ -	\$ 310									310
'21 vs. '20	\$ (40)	\$ 188	\$ 275	\$ 376									800
	% (3.5%)	% 21.4%	% 22.8%	% 39.1%									19.1%
'21 vs. '19*	% 14.7%	% 13.0%	% 30.4%	% 39.8%									24.8%

• Normalized for comparison purposes by multiplying the County's revenue by 20% prior to 3Q 2019, to match the current ongoing allocation %. Impacted figures noted with blue font.

Sales tax data is available from the State Tax Commission on a two-month lag. The Budget shown is the 2021 Adjusted Budget.

Transient Room Tax

(4.25% tax to Visitor Promotion Fund)



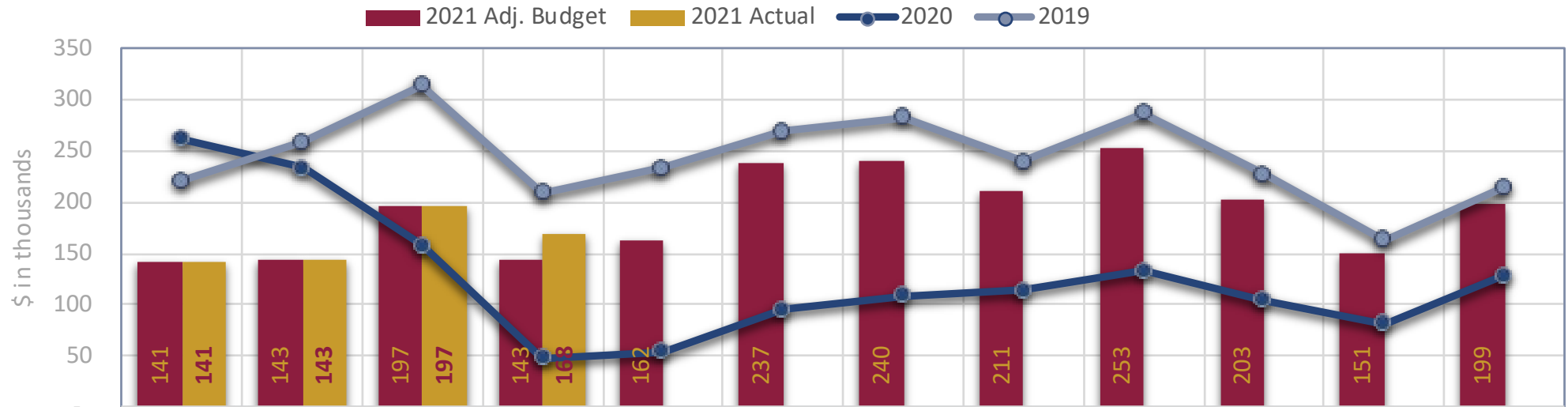
Variations:

		JAN (Mar dist)	FEB (Apr dist)	MAR (May dist)	APR (Jun dist)	MAY (Jul dist)	JUN (Aug dist)	JUL (Sep dist)	AUG (Oct dist)	SEP (Nov dist)	OCT (Dec dist)	NOV (Jan dist)	DEC (Feb dist)	YTD APR
'21 Actual vs. Budget	\$	-	-	-	179									179
'21 vs. '20	\$	(875)	(653)	283	870									(375)
	%	(46.2%)	(38.6%)	24.8%	251.7%									(7.4%)
'21 vs. '19	%	(36.3%)	(44.6%)	(37.3%)	(19.6%)									(35.3%)
'21 Budget vs. '20	%	(46.2%)	(38.6%)	24.8%	199.8%	199.9%	149.8%	119.8%	84.8%	89.8%	94.9%	84.9%	55.0%	(10.9%)



Transient Room Tax - Supplemental

(0.5% tax to TRCC: Tourism, Recreation, Cultural & Convention Fund)

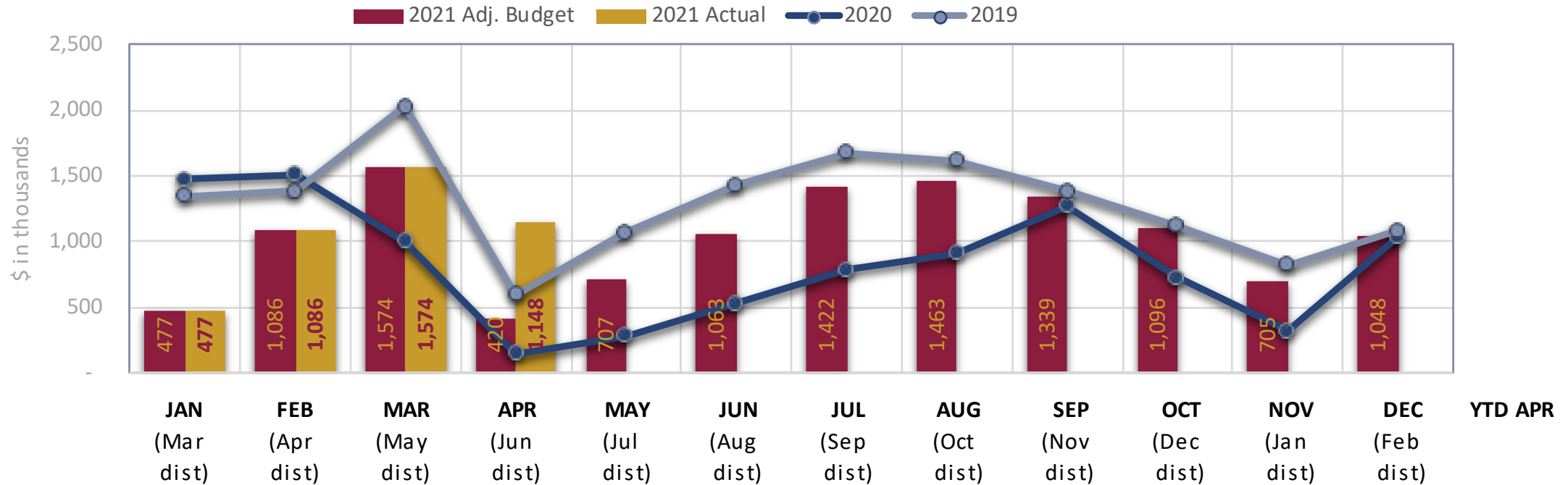


		JAN (Mar dist)	FEB (Apr dist)	MAR (May dist)	APR (Jun dist)	MAY (Jul dist)	JUN (Aug dist)	JUL (Sep dist)	AUG (Oct dist)	SEP (Nov dist)	OCT (Dec dist)	NOV (Jan dist)	DEC (Feb dist)	YTD APR
<i>Variances:</i>														
'21 Actual vs. Budget	\$	-	-	-	25									25
'21 vs. '20	\$	(121)	(90)	39	120									(52)
	%	(46.2%)	(38.6%)	24.8%	251.7%									(7.4%)
'21 vs. '19	%	(36.3%)	(44.6%)	(37.3%)	(19.6%)									(35.3%)
'21 Budget vs. '20	%	(46.2%)	(38.6%)	24.8%	199.2%	199.2%	149.3%	119.4%	84.5%	89.5%	94.5%	84.4%	54.6%	(11.0%)



Car Rental Tax

(3% & 4% tax to TRCC Fund)



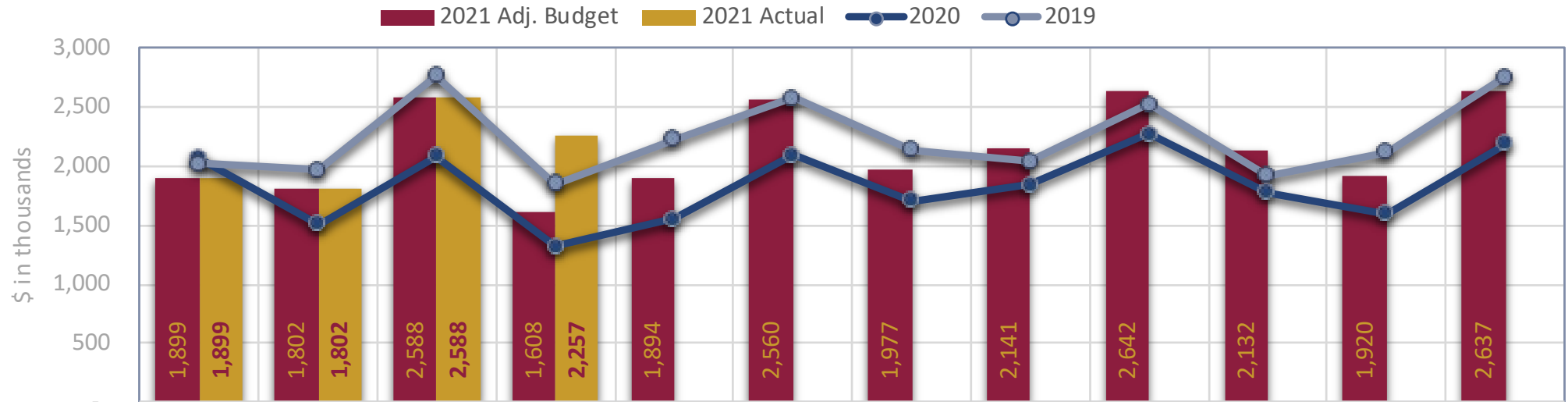
Variations:

		JAN (Mar dist)	FEB (Apr dist)	MAR (May dist)	APR (Jun dist)	MAY (Jul dist)	JUN (Aug dist)	JUL (Sep dist)	AUG (Oct dist)	SEP (Nov dist)	OCT (Dec dist)	NOV (Jan dist)	DEC (Feb dist)	YTD APR
'21 Actual vs. Budget	\$	-	-	-	728									728
'21 vs. '20	\$	(999)	(427)	570	999									143
	%	(67.7%)	(28.2%)	56.8%	669.9%									3.5%
'21 vs. '19	%	(64.6%)	(21.4%)	(22.4%)	92.6%									(19.9%)
'21 Budget vs. '20	%	(67.7%)	(28.2%)	56.8%	181.7%	151.4%	100.9%	80.9%	60.8%	5.5%	50.7%	121.1%	0.5%	(14.1%)



Restaurant Tax

(1% tax to TRCC Fund)

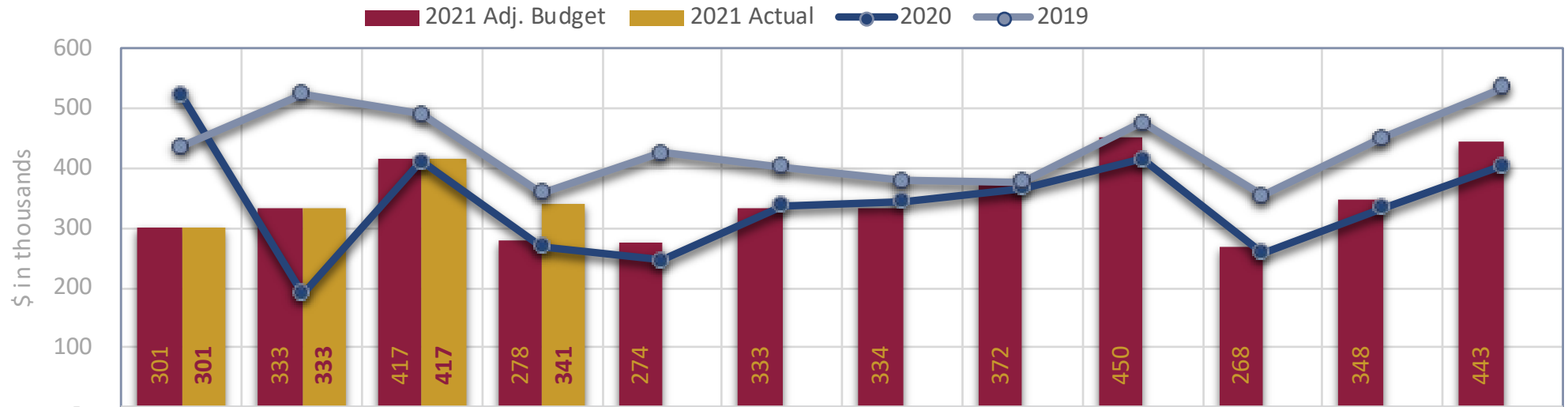


		JAN (Mar dist)	FEB (Apr dist)	MAR (May dist)	APR (Jun dist)	MAY (Jul dist)	JUN (Aug dist)	JUL (Sep dist)	AUG (Oct dist)	SEP (Nov dist)	OCT (Dec dist)	NOV (Jan dist)	DEC (Feb dist)	YTD APR
<i>Variations:</i>														
'21 Actual vs. Budget	\$	-	-	-	649									649
'21 vs. '20	\$	(167)	295	506	942									1,576
	%	(8.1%)	19.6%	24.3%	71.6%									22.6%
'21 vs. '19	%	(6.2%)	(8.3%)	(6.4%)	22.1%									(0.7%)
'21 Budget vs. '20	%	(8.1%)	19.6%	24.3%	22.3%	22.3%	22.2%	16.2%	16.2%	16.2%	20.2%	20.2%	20.2%	13.3%



Local Option Sales Tax

(1% tax to Unincorporated Municipal Services Fund)



		JAN (Mar dist)	FEB (Apr dist)	MAR (May dist)	APR (Jun dist)	MAY (Jul dist)	JUN (Aug dist)	JUL (Sep dist)	AUG (Oct dist)	SEP (Nov dist)	OCT (Dec dist)	NOV (Jan dist)	DEC (Feb dist)	YTD APR
<i>Variances:</i>														
'21 Actual vs. Budget	\$	-	-	-	63									63
'21 vs. '20	\$	(219)	143	5	72									2
	%	(42.1%)	75.6%	1.2%	27.0%									0.1%
'21 vs. '19	%	(31.0%)	(36.5%)	(14.9%)	(5.1%)									(23.1%)

Sales Tax Revenue Summary

- All taxes were significantly above budget
- YTD Transient Room and Car Rental taxes still well below 2019
- YTD Restaurant taxes barely below 2019

YTD April Sales (Mar-Jun Distributions)

<i>thousands \$</i>	<i>Variance, Actual vs. Budget</i>	<i>Variance, Actual vs. Prior Year</i>		<i>Variance, Actual vs. 2019</i>	
General Fund	1,502	4,439	18.3%	5,756	25.1%
TRCC Fund	1,402	1,667	14.1%	(1,479)	(9.9%)
Visitor Promotion Fund	179	(375)	(7.4%)	(2,558)	(35.3%)
ZAP Fund	449	1,160	19.9%	1,310	23.0%
CO Transportation Fund*	310	800	19.1%	990	24.8%
Unincorp. County Fund	63	2	0.1%	(418)	(23.1%)
TOTAL	3,906	7,693	14.6%	3,600	6.4%

* County Option Transportation Tax normalized for comparison purposes by multiplying the County's revenue by 20% prior to 3Q 2019, to match the current ongoing allocation %. Impacted figures noted with blue font.

APPENDIX

April 2021 YTD Sales Tax Results



April Sales (Jun Distribution)

in thousands \$

Fund Tax	Actual	Budget (Jun Adjusted)	Variance, Actual vs. Adj Budget		Prior Year	Variance, Actual vs. Prior Year		2019	Variance, Actual vs. 2019	
GF County Option	6,883	5,569	1,314	23.6%	5,065	1,818	35.9%	4,893	1,990	40.7%
Z+GF ZAP	2,668	2,031	637	31.4%	1,898	770	40.6%	1,915	753	39.3%
VP TRT	1,215	1,036	179	17.3%	346	870	251.7%	1,513	(297)	(19.6%)
TRCC TRT Sup	168	143	25	17.6%	48	120	251.7%	209	(41)	(19.6%)
TRCC Car Rental	1,148	420	728	173.3%	149	999	669.9%	596	552	92.6%
TRCC Restaurant	2,257	1,608	649	40.4%	1,315	942	71.6%	1,849	408	22.1%
TRX CO Transportation*	1,338	1,028	310	30.2%	962	376	39.1%	957	381	39.8%
Uni Local Option	341	278	63	22.6%	268	72	27.0%	359	(18)	(5.1%)
TOTAL	16,019	12,113	3,906	32.2%	10,051	5,968	59.4%	12,291	3,728	30.3%

Fund Totals

General Fund	7,671	6,169	1,502	24.4%	5,626	2,046	36.4%	5,459	2,213	40.5%
TRCC Fund	3,573	2,171	1,402	64.6%	1,512	2,061	136.3%	2,654	919	34.6%
Visitor Promotion Fund	1,215	1,036	179	17.3%	346	870	251.7%	1,513	(297)	(19.6%)
ZAP Fund	1,880	1,431	449	31.4%	1,337	543	40.6%	1,349	530	39.3%
CO Transportation Fund*	1,338	1,028	310	30.2%	962	376	39.1%	957	381	39.8%
Unincorp. County Fund	341	278	63	22.6%	268	72	27.0%	359	(18)	(5.1%)
TOTAL	16,019	12,113	3,906	32.2%	10,051	5,968	59.4%	12,291	3,728	30.3%

YTD April Sales (Mar-Jun Distributions)

in thousand

Actual	Budget (Jun Adjusted)	Variance, Actual vs. Adj Budget		Prior Year	Variance, Actual vs. Prior Year		2019	Variance, Actual vs. 2019	
25,781	24,467	1,314	5.4%	21,829	3,952	18.1%	20,575	5,207	25.3%
9,933	9,296	637	6.9%	8,286	1,647	19.9%	8,074	1,859	23.0%
4,692	4,513	179	4.0%	5,067	(375)	(7.4%)	7,250	(2,558)	(35.3%)
649	624	25	4.0%	701	(52)	(7.4%)	1,003	(354)	(35.3%)
4,285	3,557	728	20.5%	4,141	143	3.5%	5,352	(1,067)	(19.9%)
8,546	7,897	649	8.2%	6,970	1,576	22.6%	8,604	(58)	(0.7%)
4,984	4,673	310	6.6%	4,184	800	19.1%	3,994	990	24.8%
1,391	1,328	63	4.7%	1,390	2	0.1%	1,809	(418)	(23.1%)
60,261	56,356	3,906	6.9%	52,568	7,693	14.6%	56,661	3,600	6.4%

Fund Totals

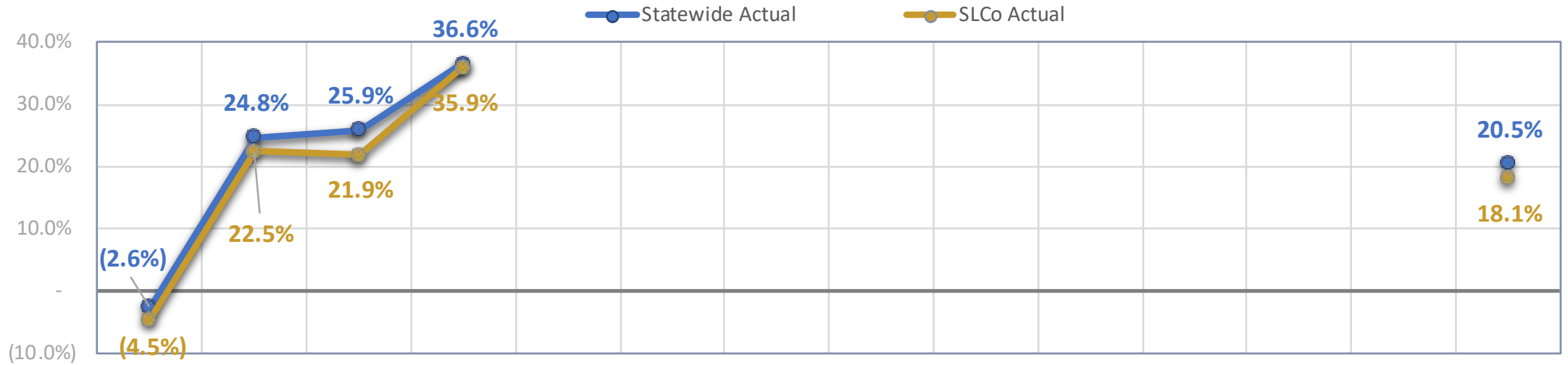
28,717	27,214	1,502	5.5%	24,278	4,439	18.3%	22,961	5,756	25.1%
13,480	12,078	1,402	11.6%	11,813	1,667	14.1%	14,959	(1,479)	(9.9%)
4,692	4,513	179	4.0%	5,067	(375)	(7.4%)	7,250	(2,558)	(35.3%)
6,998	6,549	449	6.9%	5,838	1,160	19.9%	5,688	1,310	23.0%
4,984	4,673	310	6.6%	4,184	800	19.1%	3,994	990	24.8%
1,391	1,328	63	4.7%	1,390	2	0.1%	1,809	(418)	(23.1%)
60,261	56,356	3,906	6.9%	52,568	7,693	14.6%	56,661	3,600	6.4%

* 2019 County Option Transportation Tax normalized for comparison purposes by multiplying the County's revenue by 20% prior to 3Q 2019, to match the current ongoing allocation %. Impacted figures noted with blue font.



County Option Sales Tax

(0.25% tax — SLCo vs. All Counties Statewide)



	JAN (Mar dist)	FEB (Apr dist)	MAR (May dist)	APR (Jun dist)	MAY (Jul dist)	JUN (Aug dist)	JUL (Sep dist)	AUG (Oct dist)	SEP (Nov dist)	OCT (Dec dist)	NOV (Jan dist)	DEC (Feb dist)	YTD APR
<i>Variances:</i>													
<i>SLCo Actual</i>	(4.5%)	22.5%	21.9%	35.9%									18.1%
<i>Statewide Actual</i>	(2.6%)	24.8%	25.9%	36.6%									20.5%

Taxable Sales

Top 25 Economic Sectors (NAICS) and Filing Period – Salt Lake County



In millions \$

Economic Sector	2021 YTD May	YTD May \$ vs. '20
Utilities	437	12
Construction	261	33
Manufacturing	643	133
Wholesale Trade-Durable Goods	1,237	229
Wholesale Trade-Nondurable Goods	189	35
Retail-Miscellaneous Retail Trade	428	62
Retail-Motor Vehicle & Parts Dealers	1,713	375
Retail-Furniture & Home Furnishings Stores	279	78
Retail-Electronics & Appliance Stores	349	76
Retail-Build. Material, Garden Equip. & Supplies	935	215
Retail-Food & Beverage Stores	918	(49)
Retail-Health & Personal Care Stores	124	18
Retail-Gasoline Stations	190	4
Retail-Clothing & Clothing Accessories Stores	370	141
Retail-Sporting Goods, Hobby, Music, & Book S	254	71
Retail-General Merchandise Stores	1,179	81
Nonstore Retailers	951	219
Information	513	55
Real Estate, Rental, & Leasing	368	27
Professional, Scientific, & Technical Services	298	11
Educational Services	22	9
Arts, Entertainment, And Recreation	97	10
Accommodation	212	3
Food Services & Drinking Places	1,042	206
Other Services-Execpt Public Administration	299	39
Total (Including smaller sectors not shown)	13,609	2,107

2020 vs. 2019												2021 vs. 2020					2021 vs. 2019				
Jan	Feb	Mar	Apr	May	Jun	Jul	Aug	Sep	Oct	Nov	Dec	Jan	Feb	Mar	Apr	May	Jan	Feb	Mar	Apr	May
5%	6%	1%	(2%)	(2%)	10%	5%	4%	5%	5%	(4%)	3%	5%	(5%)	5%	11%	0%	9%	1%	7%	8%	(2%)
44%	22%	37%	36%	15%	11%	18%	17%	21%	11%	9%	(10%)	6%	22%	8%	17%	21%	52%	49%	48%	60%	40%
10%	24%	15%	19%	9%	5%	7%	17%	17%	23%	17%	28%	23%	21%	32%	28%	23%	36%	50%	52%	53%	34%
7%	6%	6%	1%	(8%)	11%	1%	(0%)	(3%)	5%	7%	18%	9%	13%	24%	34%	33%	16%	20%	31%	36%	22%
7%	10%	(0%)	(12%)	(12%)	(4%)	(0%)	(3%)	(1%)	(3%)	9%	10%	4%	15%	28%	36%	32%	11%	27%	28%	21%	16%
8%	11%	3%	(6%)	3%	(1%)	7%	4%	7%	14%	9%	12%	13%	10%	17%	31%	16%	22%	21%	21%	22%	19%
6%	13%	(24%)	(5%)	20%	21%	9%	4%	8%	6%	0%	14%	20%	11%	71%	45%	5%	27%	25%	30%	37%	26%
4%	12%	(17%)	(36%)	(17%)	15%	8%	6%	10%	15%	10%	11%	36%	8%	32%	113%	37%	41%	20%	9%	36%	15%
(8%)	21%	13%	(8%)	0%	(16%)	(1%)	(23%)	(5%)	(5%)	(6%)	(1%)	10%	13%	51%	35%	24%	1%	37%	70%	24%	24%
4%	17%	13%	24%	22%	15%	16%	20%	25%	25%	25%	31%	35%	29%	41%	24%	25%	41%	51%	59%	53%	52%
5%	9%	36%	13%	17%	10%	18%	4%	13%	9%	4%	12%	3%	1%	(16%)	(2%)	(7%)	8%	10%	14%	11%	9%
13%	23%	(8%)	(31%)	(13%)	(3%)	5%	(22%)	2%	5%	3%	3%	8%	(3%)	11%	68%	24%	22%	20%	3%	16%	8%
20%	17%	10%	8%	10%	6%	3%	4%	6%	6%	(3%)	(1%)	(7%)	(2%)	5%	8%	6%	11%	14%	16%	17%	17%
4%	4%	(43%)	(71%)	(38%)	(17%)	(28%)	(4%)	(7%)	(9%)	(9%)	(4%)	2%	(5%)	103%	275%	89%	6%	(1%)	16%	10%	17%
8%	5%	(5%)	(10%)	17%	24%	19%	17%	20%	33%	39%	15%	33%	28%	55%	64%	17%	44%	34%	48%	48%	36%
5%	6%	20%	7%	14%	7%	8%	4%	12%	10%	10%	5%	17%	5%	1%	11%	5%	23%	12%	21%	19%	20%
80%	90%	78%	104%	111%	92%	98%	105%	55%	36%	44%	23%	41%	31%	39%	29%	11%	154%	150%	147%	162%	135%
11%	1%	2%	(11%)	(10%)	5%	(2%)	3%	(2%)	(19%)	6%	7%	5%	(2%)	27%	13%	15%	17%	(1%)	29%	0%	4%
12%	9%	(7%)	(22%)	(19%)	(18%)	(18%)	(22%)	(14%)	(9%)	(10%)	(11%)	(13%)	(12%)	10%	36%	33%	(3%)	(4%)	2%	6%	8%
(21%)	13%	20%	3%	8%	29%	33%	0%	(4%)	(1%)	(3%)	2%	1%	(8%)	(1%)	24%	9%	(20%)	4%	19%	28%	17%
(2%)	(3%)	(17%)	(73%)	(64%)	(43%)	(45%)	(41%)	(37%)	(43%)	(52%)	(18%)	(43%)	(33%)	14%	174%	633%	(44%)	(35%)	(6%)	(26%)	165%
(11%)	11%	(57%)	(72%)	(61%)	(55%)	(43%)	(45%)	(44%)	(59%)	(53%)	(58%)	(37%)	(45%)	26%	157%	264%	(44%)	(39%)	(45%)	(29%)	41%
18%	17%	(45%)	(88%)	(76%)	(67%)	(61%)	(55%)	(59%)	(53%)	(57%)	(32%)	(45%)	(44%)	19%	508%	225%	(35%)	(35%)	(34%)	(25%)	(23%)
7%	11%	(25%)	(47%)	(30%)	(25%)	(19%)	(17%)	(13%)	(11%)	(18%)	(15%)	(7%)	(12%)	31%	102%	58%	(1%)	(2%)	(1%)	7%	10%
3%	0%	4%	(23%)	(18%)	1%	7%	(3%)	(0%)	0%	4%	(0%)	3%	6%	5%	49%	32%	6%	7%	10%	14%	9%
9%	13%	1%	(6%)	3%	6%	5%	3%	4%	5%	5%	6%	9%	4%	24%	35%	20%	18%	18%	25%	28%	23%

Taxable Sales

Year over Year Growth by City and Filing Period – Salt Lake County



In millions \$

City	2021 YTD May	YTD May \$ vs. '20
------	--------------	--------------------

2020 vs. 2019												2021 vs. 2020					2021 vs. 2019				
Jan	Feb	Mar	Apr	May	Jun	Jul	Aug	Sep	Oct	Nov	Dec	Jan	Feb	Mar	Apr	May	Jan	Feb	Mar	Apr	May

CITIES

Alta	38	(1)	12%	10%	(50%)	(80%)	(32%)	(26%)	1%	(4%)	(35%)	12%	17%	(27%)	(34%)	(33%)	51%	469%	10%	(25%)	(26%)	(25%)	12%	(25%)
Bluffdale	128	43	52%	112%	14%	52%	(12%)	8%	54%	(35%)	23%	(8%)	(23%)	40%	37%	23%	114%	48%	40%	108%	161%	143%	125%	22%
Brighton	48	4	n/a	n/a	n/a	n/a	n/a	n/a	n/a	n/a	n/a	n/a	n/a	n/a	(11%)	2%	(5%)	561%	61%	n/a	n/a	n/a	n/a	n/a
Cottonwood Heights	281	46	6%	11%	11%	8%	10%	9%	10%	16%	11%	11%	9%	12%	23%	9%	22%	23%	21%	30%	20%	35%	33%	32%
Draper	853	169	13%	16%	(1%)	(9%)	3%	17%	9%	5%	7%	7%	5%	14%	15%	10%	31%	53%	17%	30%	28%	30%	39%	20%
Herriman	166	38	38%	42%	45%	73%	68%	65%	65%	59%	48%	40%	50%	36%	41%	35%	38%	19%	18%	95%	92%	100%	106%	98%
Holladay	145	21	10%	24%	15%	15%	19%	12%	25%	25%	20%	25%	24%	5%	12%	6%	16%	37%	18%	23%	31%	34%	58%	41%
Midvale	432	89	8%	10%	7%	(6%)	1%	4%	5%	2%	5%	12%	10%	7%	14%	13%	28%	47%	30%	22%	24%	36%	38%	31%
Millcreek	433	64	15%	18%	11%	3%	15%	12%	19%	16%	16%	21%	20%	9%	26%	9%	11%	32%	12%	45%	28%	23%	36%	28%
Murray	1,015	208	6%	10%	(13%)	(25%)	(7%)	4%	(3%)	(0%)	2%	5%	(5%)	(1%)	9%	(3%)	38%	65%	29%	15%	7%	20%	24%	20%
Riverton	326	47	9%	16%	13%	23%	26%	20%	19%	15%	22%	17%	16%	14%	25%	15%	23%	17%	6%	37%	34%	38%	44%	34%
Salt Lake City	3,896	539	11%	13%	(3%)	(16%)	(9%)	(4%)	(6%)	(7%)	(7%)	(5%)	(3%)	2%	(1%)	(4%)	21%	40%	30%	9%	9%	17%	18%	19%
Sandy	1,157	216	2%	8%	(4%)	(9%)	5%	7%	7%	9%	6%	7%	10%	4%	18%	8%	27%	40%	21%	21%	17%	22%	27%	27%
South Jordan	821	123	13%	10%	10%	2%	18%	15%	14%	7%	16%	13%	15%	10%	17%	10%	18%	33%	12%	32%	21%	30%	35%	31%
South Salt Lake	920	121	16%	16%	6%	5%	9%	9%	11%	5%	10%	8%	8%	9%	5%	10%	22%	23%	13%	23%	28%	29%	30%	23%
Taylorsville	287	35	12%	12%	7%	11%	13%	8%	10%	7%	11%	8%	8%	13%	11%	4%	24%	20%	9%	24%	17%	33%	32%	23%
West Jordan	935	133	(8%)	18%	15%	12%	24%	17%	20%	14%	15%	20%	13%	15%	18%	12%	21%	23%	9%	9%	32%	39%	37%	36%
West Valley City	1,305	183	12%	10%	2%	3%	8%	4%	3%	2%	5%	(1%)	5%	11%	10%	7%	26%	23%	13%	22%	17%	28%	27%	22%
Subtotal	13,185	2,079	10%	14%	2%	(5%)	4%	6%	5%	3%	5%	5%	5%	8%	9%	4%	24%	36%	20%	20%	19%	26%	29%	24%

TOWNSHIPS & OTHER

Copperton Township	3	1	134%	160%	379%	131%	156%	24%	129%	194%	303%	118%	41%	(23%)	39%	(11%)	8%	99%	20%	225%	132%	419%	362%	208%
Emigration Canyon Towns	5	1	79%	52%	96%	71%	26%	0%	(8%)	(2%)	37%	10%	(27%)	14%	(6%)	20%	27%	32%	(0%)	69%	82%	149%	125%	26%
Kearns Township	80	9	33%	41%	37%	57%	63%	41%	58%	40%	33%	44%	31%	26%	24%	13%	13%	13%	5%	65%	60%	55%	78%	70%
Magna Township	108	16	25%	50%	85%	51%	71%	74%	71%	58%	46%	53%	38%	0%	46%	42%	(9%)	26%	7%	82%	113%	68%	89%	84%
Salt Lake County (Uninco)	222	1	(33%)	(33%)	(36%)	(36%)	(43%)	(28%)	(19%)	(8%)	(27%)	(21%)	(27%)	(33%)	(14%)	(18%)	14%	14%	9%	(42%)	(45%)	(27%)	(28%)	(37%)
White City Township	5	1	45%	37%	47%	89%	70%	79%	45%	58%	47%	42%	37%	26%	39%	24%	39%	5%	(7%)	101%	70%	105%	99%	58%
Utah Data Center SL Co	0	0	n.m.	n.m.	n.m.	n.m.	n.m.	n.m.	n.m.	n.m.	n.m.	n.m.	n.m.	n.m.	n.m.	n.m.	n.m.	n.m.	n.m.	n.m.	n.m.	n.m.	n.m.	n.m.
Subtotal	423	29	(18%)	(15%)	(13%)	(11%)	(10%)	(2%)	7%	12%	(8%)	1%	(6%)	(19%)	4%	(1%)	9%	17%	7%	(15%)	(16%)	(5%)	4%	(3%)

TOTAL 13,608 2,108 8.6% 13.1% 1.0% (5.5%) 3.1% 5.6% 4.9% 2.8% 4.0% 4.5% 4.6% 6.4% 9.1% 3.9% 23.6% 35.3% 19.8% 18.4% 17.5% 24.8% 27.8% 23.5%

Note: "n.m." indicates "not meaningful" "n/a" indicates not available. Brighton is newly incorporated, and numbers are not available for 2019. Source: UT State Tax Commission (<https://tax.utah.gov/econstats/tax-return-data>). Disclaimer: Please note that the data presented here is preliminary and is subject to revision due to late returns, amended returns, required statutory/regulatory changes, and other changes that impact tax return data.