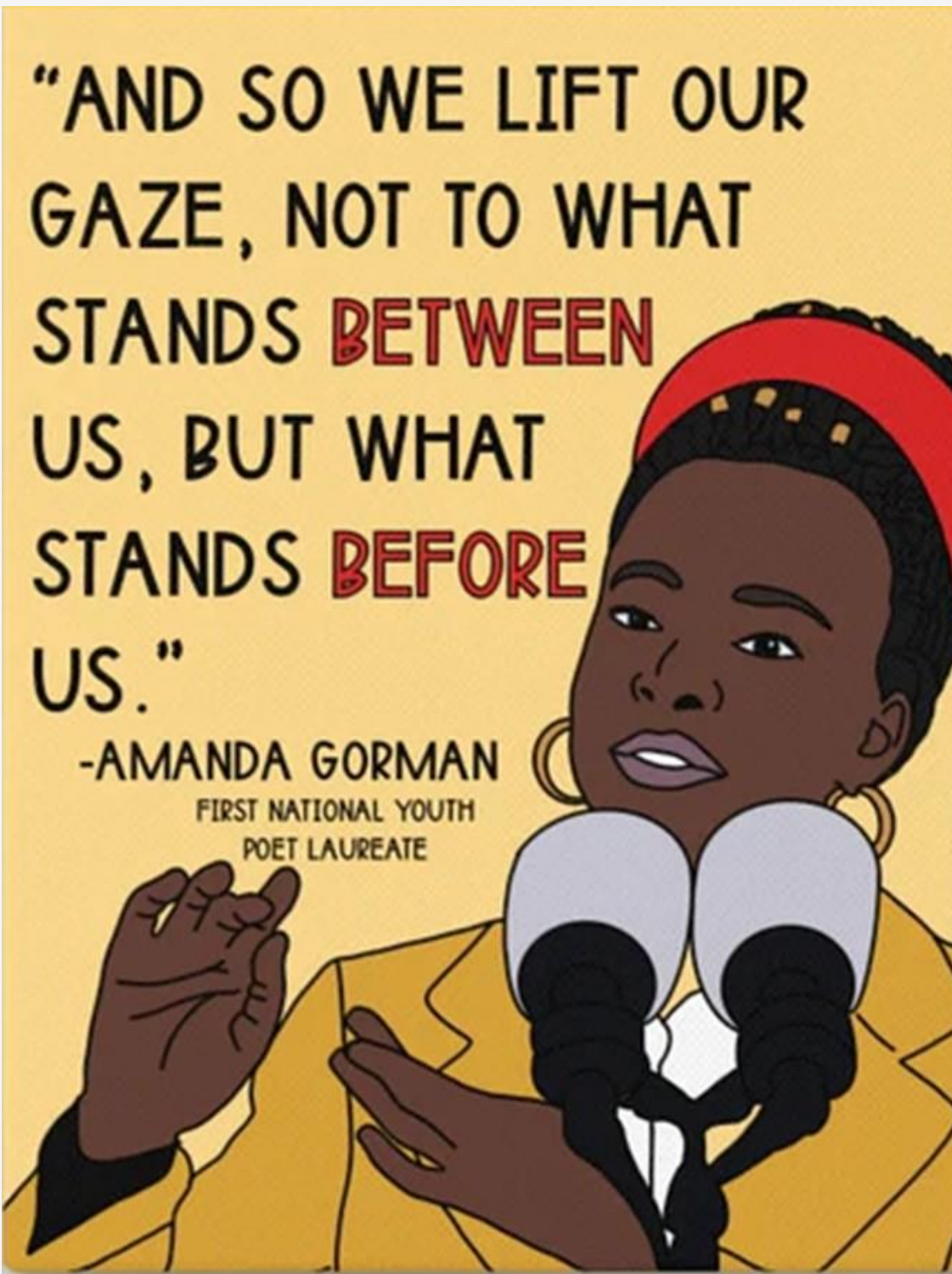


Health Equity Bureau





Health Equity

- Opportunity to be as healthy as possible
- Social determinants of health, power imbalances, and historical legacies drive health inequities
- Tailor access and remove obstacles to health
- Principle, process, outcome, & pathway

Bureau Org Chart



Morgan Talbot
Evaluator (PHIB)



Daniel Opoku Agyemang
Epidemiologist (PHIB)



Kassy Keen
Bureau Manager



Anni McKinnon
Health Literacy Program Manager



Jennifer Puder
CHW Program Manager



Blake Neilsen
Policy Analyst



Ayan Nor
Health Educator



Krystle Tomoelupe
CHW



Lasana Trawally
CHW



Vacant
CHW



Yolanda Rodriguez
CHW



Britta Watts
Health Educator



Luis Trejo-Rivera
CHW




Manny Cabrera
CHW




Halima Dahir
CHW



Paul Petersen
CHW



JB Ili
CHW



Claudia Ceron
Health Educator



Roshanak Khalili
CHW



Yeny Arones
CHW



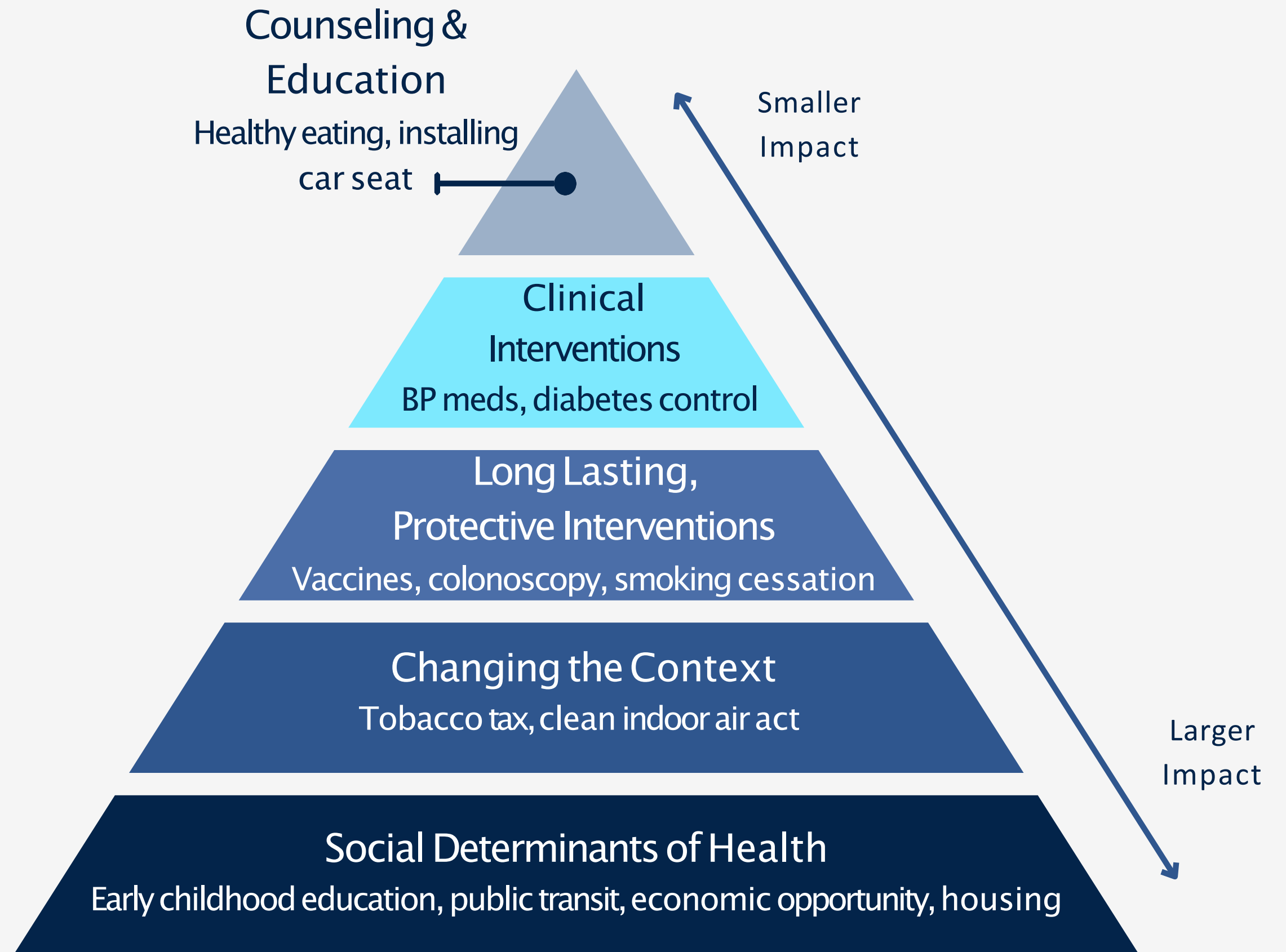
Mardo Tarr
CHW



Lucy Guerrero
CHW

Goals & Growth

- Systematic Change to a Systemic Issue
- CHW/TCM Integration Pilot
- Equity Roadmaps
- BUILD Health Challenge



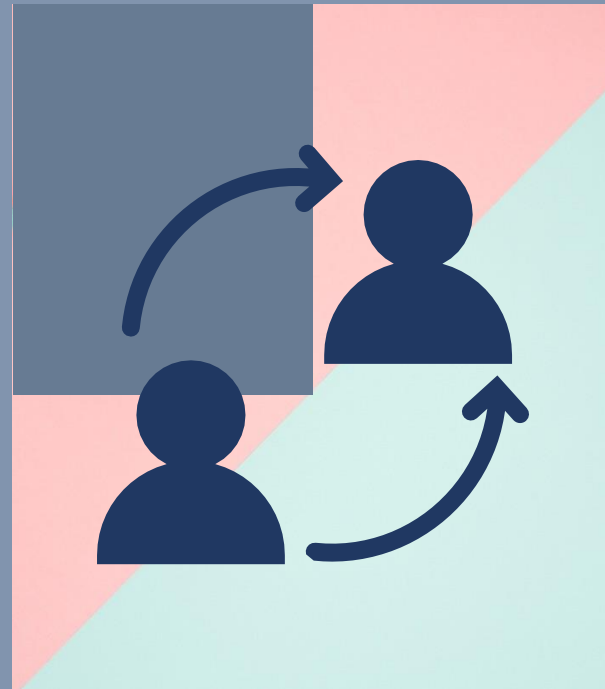
CHW Program

Meeting the needs of community members

- Wrap around services
- Referrals
- Education & outreach
- Direct services
- SLCoHD CHWs or sub-grantees connected over 500 discretionary fund clients with nearly \$450,000 in services since Nov. 2020



CHW Program



Referrals

8,000+ referrals to wrap around services since 2020



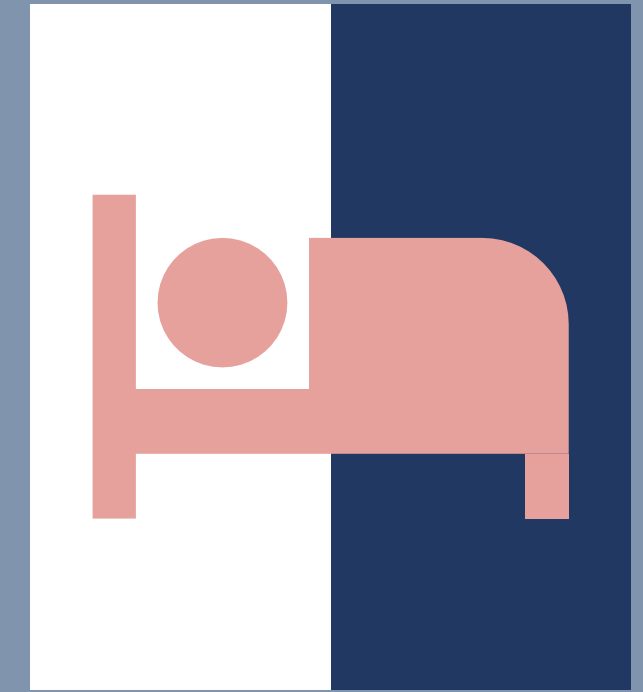
Housing Assistance

80% of SLCoHD clients receiving discretionary funds support, needed housing or mortgage assistance



Food Distribution

7,946 boxes of food delivered



Quarantine & Isolation

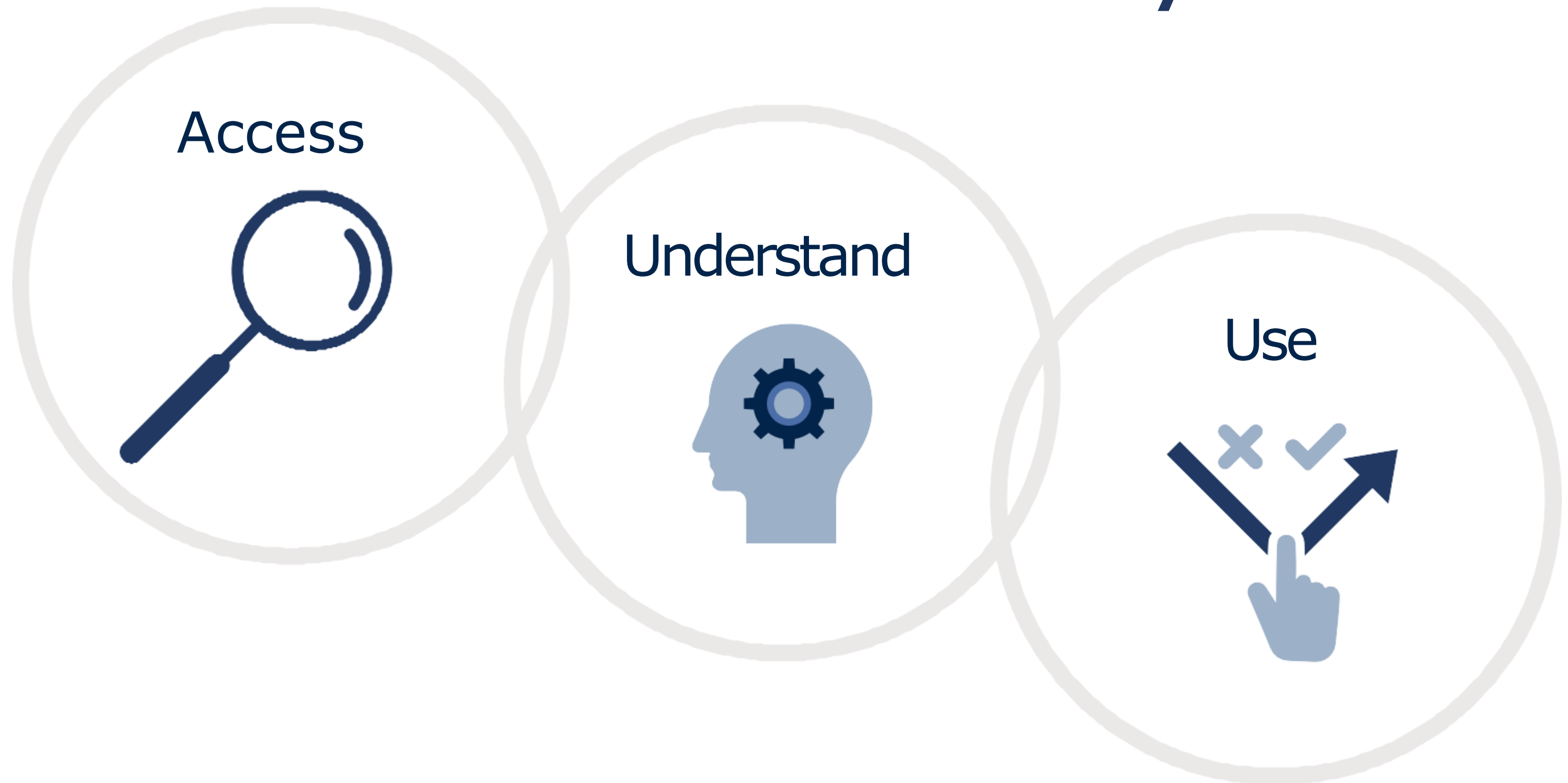
Dedicated funding to support Q&I for those in need

Power of Connection

CHW Story

- 74-year-old female, single
- 2 adult children with disabilities
 - - Quadriplegic, requires full care
 - - Uncontrolled diabetes, wheelchair
- Medicare and Medicaid-paid for 2 visits per day
- Became severely ill with COVID
- MD wanted her to go to ER and admitted to ICU
- Mom refused to leave because of her children
- CHW built trust, arranged for care, and mother was admitted to ICU

Health Literacy



Health Literacy Program

Approach 1

Community Based
Organization Partnerships



Approach 2

Clinical Partnerships



Approach 3

HD Liaisons &
Connectors





Clinic Partners



Implementing Health Literacy Quality Improvement Projects

- Policies & Procedures
- Check Understanding
- Teach-Back
- Language Access
- Plain Language
- Shared Decision-Making

¿ PUEDO VACUNARME SI ESTOY EMBARAZADA ?

Sí, la vacuna contra COVID-19 es segura y eficaz para mujeres embarazadas y lactantes

#HomeVisitation

Children's Service Society of Utah

CBO Partners

- Flexible funding to provide services and outreach to populations that trust the CBO
 - Covid vaccine clinics
 - Counseling sessions
 - Long-lasting preventative behaviors
- Health Department CHW liaison
 - Assess health information trust & needs
 - Develop messaging to meet needs
 - Resource sharing

LA FAMILIA ES PRIMERO



Y LA VACUNA TAMBIÉN



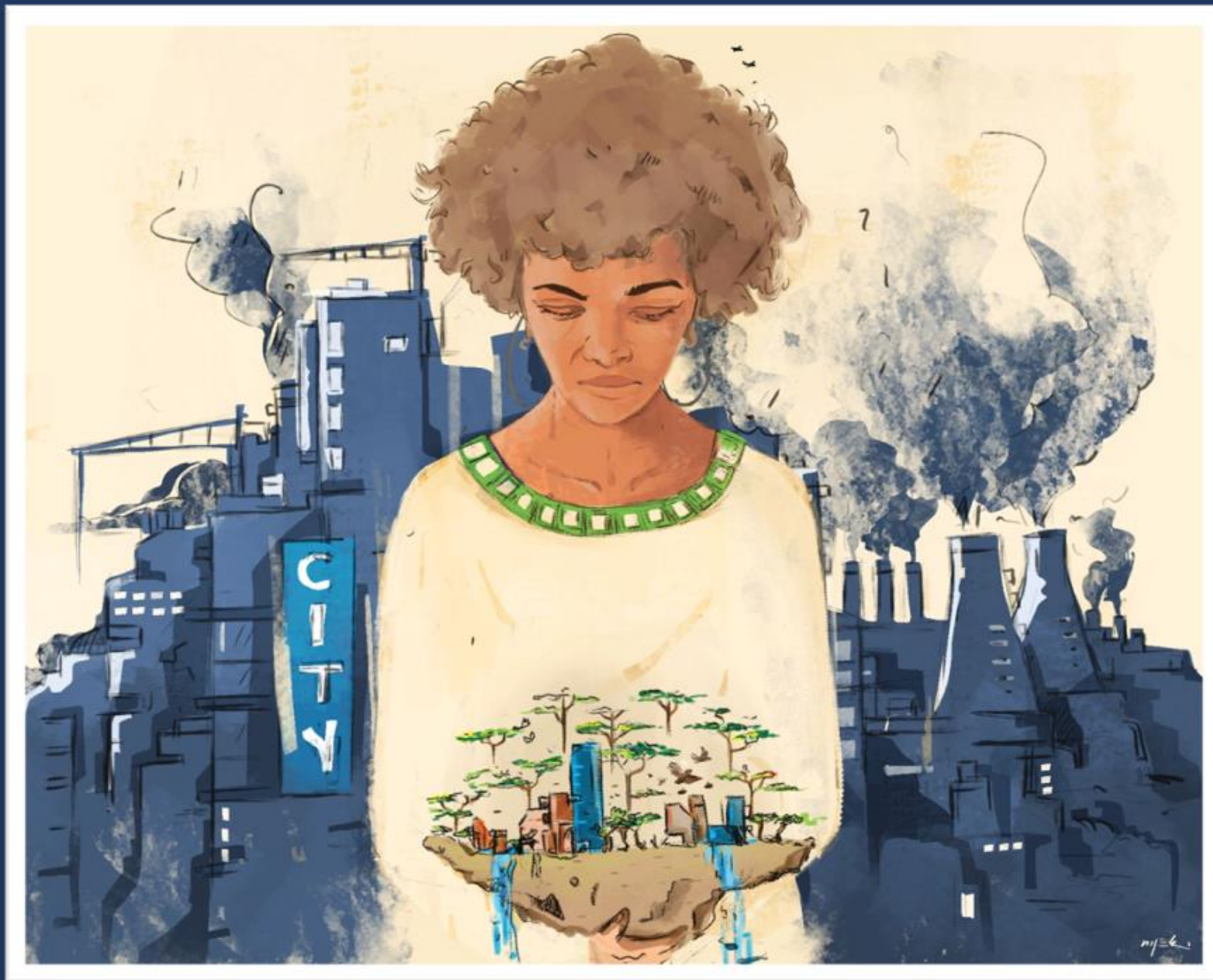
MULTICULTURAL COUNSELING CENTER
 Síguenos en nuestras redes sociales
 @MCCounseling_C @SaltLakeHealth



Public Health Institute Report: Roadmap for Equitable and Transformative Change

87% of LHD respondents said knowledge of community engagement and partnerships was the most critical staff skill in the COVID response

Recommendation: Bolster Investments in Public Health Departments and Communities to Advance Health Equity



Health Literacy Focus Groups

Covid-19 Health Messages: Attitudes & Beliefs

1. Trust varied, but community relied on information from CBOs
2. Observing others' behavior impacted willingness to accept health messages (good & bad)
3. Mental health assistance is vital to reduce covid-19 impacts

Lesson for public health

- Share information with CBOs to tailor (culturally & linguistically)
- Distribute messaging locally (grocery stores, etc.)

5

CBOs

included culturally
diverse community
members

3

Themes

1. Public Trust
2. Personal Experience
3. Reduce Covid-19
Impacts

Focus Groups



...if it is authentic, then going through the various communities through community leaders will be the effective way...using the communities to me is one of the best way of getting to the people.

~Focus group participant when asked how we can make health information more accessible to community.

Policy Work

1

Policy &
procedure
overview

2

Policy &
procedure gaps
& opportunitites

3

Focused topics -
HR recruitment,
Envir. Health, etc.



Thank you!

Kassy Keen, MPH
Health Equity Bureau Manager

kkeen@slco.org

385-443-0100