



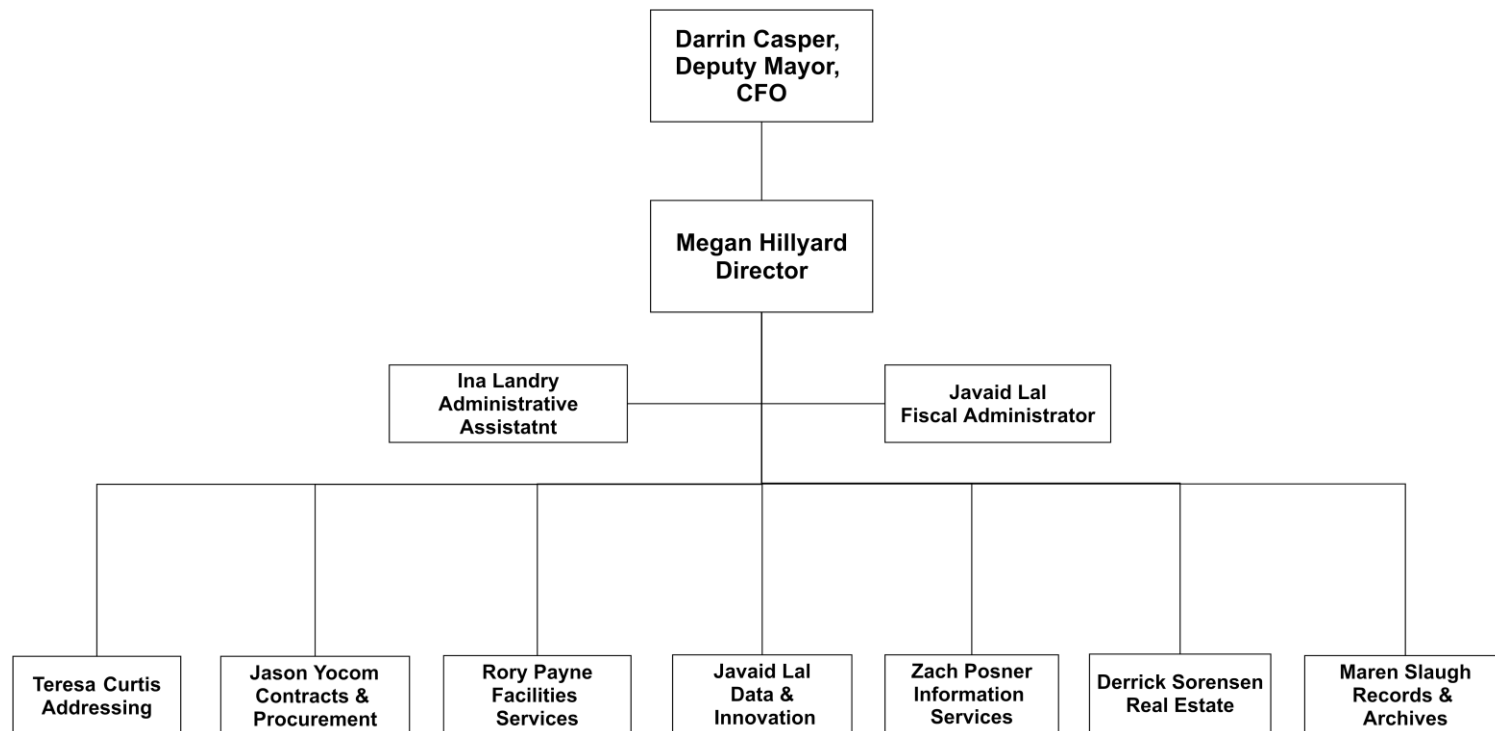
# **DEPARTMENT OF ADMINISTRATIVE SERVICES**

**2018 OVERVIEW  
Mission, Major Initiatives and Related  
Funding**





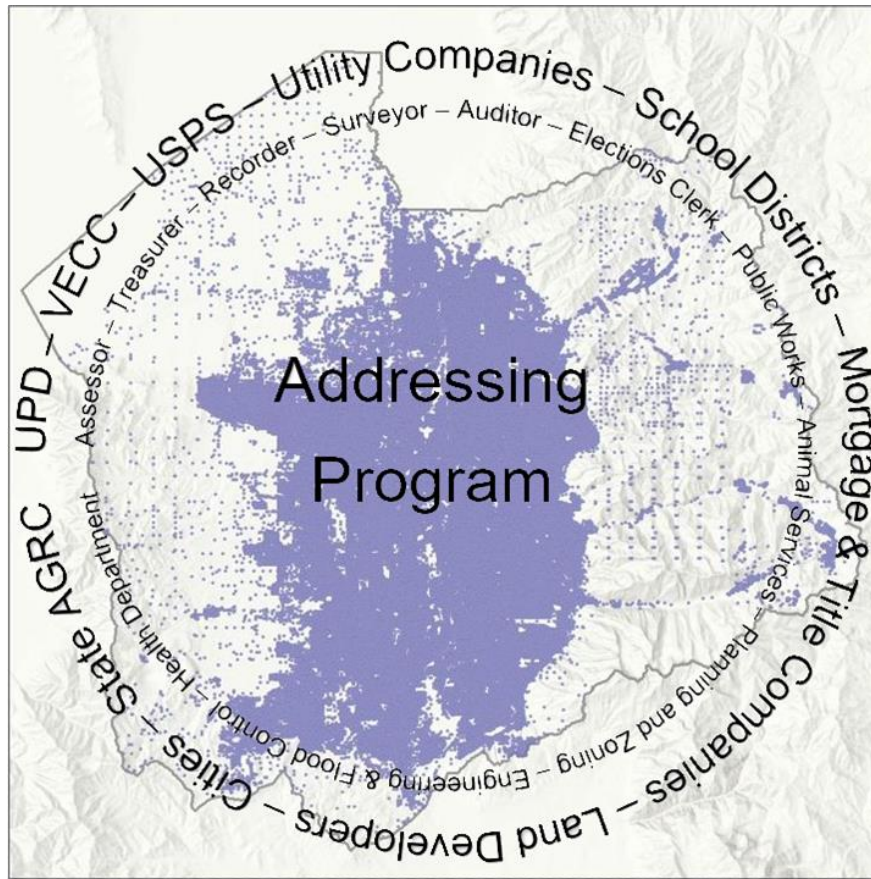
# Department of Administrative Services



Enhancing and supporting the County's ability to deliver services...

# Addressing Program

Addressing provides accurate address information for internal and external agencies to support and enhance their services.





## Highlights

- Dashboard/ Data Tracking
- LUCA Census
- Private Address Clarification
- Mainframe Migration

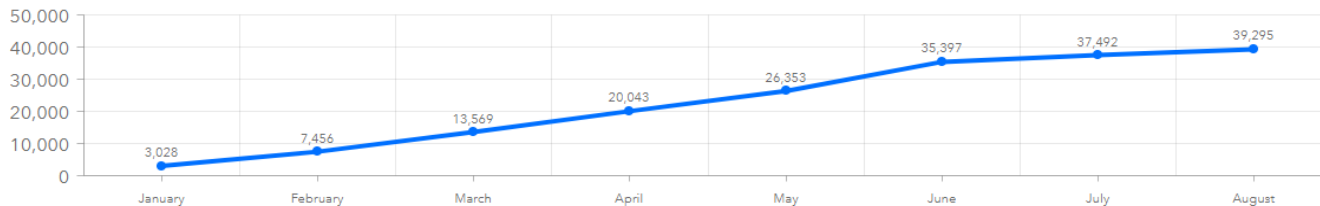
## Looking Ahead...

- Municipal Partnerships & Collaborations
- Intersection Coordinate Data
- GIS Training (ESRI)

# What's in an address?

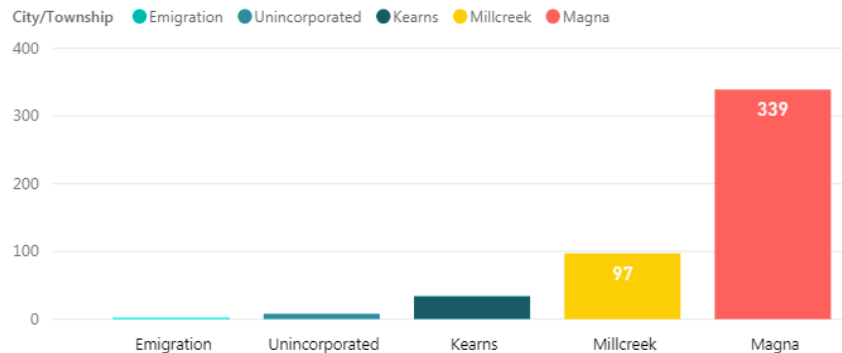
*Addressing*

Validated Addresses Year to Date

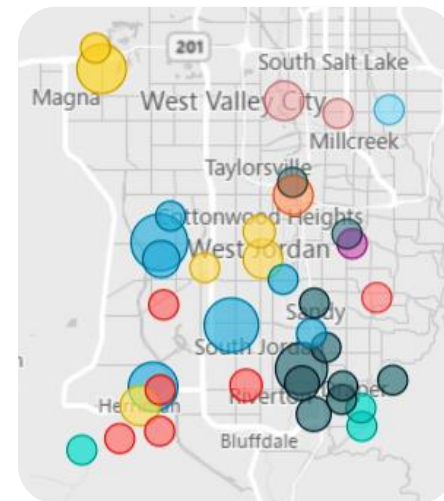


## Address Validation

Total Address Assignments by Municipality, YTD 2018



## Address Assignment



## Street Name Approvals



BOARD OF HEALTH  
Public Safety Building, Salt and the South Branch

HON. JOHN W. ENDRIST  
Governor of Idaho

HENRY BAILEY, M.D.  
Sanitary Commissioner

L. E. VICK, M.D.  
Sanitary Commissioner

L. L. BAIRD, M.D.  
Sanitary Officer at Salt

F. H. HARRISON, M.D.  
Sanitary Officer at Salt

SALT LAKE CITY  
ANNUAL REPORT  
For the Year of 1903

No.	Rank or Duty	MEMORANDA			18TH
		Name	To What Service	and Where (and)	From in City
A		William Henry M.	dt. Geo. H. & William	June 1891	Winter Ground
1		William George K.	sen.	June 1891	late Lark City
3		Richard R.	sen.	May 1891	late Lark City
4		John M.	sen.	May 1891	late Lark City
5		John M.	sen.	May 1891	late Lark City
6		John M.	sen.	May 1891	late Lark City
7		John M.	sen.	May 1891	late Lark City
8		John M.	sen.	May 1891	late Lark City
9		John M.	sen.	May 1891	late Lark City
10		John M.	sen.	May 1891	late Lark City
11		John M.	sen.	May 1891	late Lark City
12		John M.	sen.	May 1891	late Lark City
13		John M.	sen.	May 1891	late Lark City
14		John M.	sen.	May 1891	late Lark City
15		John M.	sen.	May 1891	late Lark City
16		John M.	sen.	May 1891	late Lark City
17		John M.	sen.	May 1891	late Lark City
18		John M.	sen.	May 1891	late Lark City
19		John M.	sen.	May 1891	late Lark City
20		John M.	sen.	May 1891	late Lark City
21		John M.	sen.	May 1891	late Lark City
22		John M.	sen.	May 1891	late Lark City
23		John M.	sen.	May 1891	late Lark City
24		John M.	sen.	May 1891	late Lark City
25		John M.	sen.	May 1891	late Lark City
26		John M.	sen.	May 1891	late Lark City
27		John M.	sen.	May 1891	late Lark City
28		John M.	sen.	May 1891	late Lark City
29		John M.	sen.	May 1891	late Lark City
30		John M.	sen.	May 1891	late Lark City
31		John M.	sen.	May 1891	late Lark City
32		John M.	sen.	May 1891	late Lark City
33		John M.	sen.	May 1891	late Lark City
34		John M.	sen.	May 1891	late Lark City
35		John M.	sen.	May 1891	late Lark City
36		John M.	sen.	May 1891	late Lark City
37		John M.	sen.	May 1891	late Lark City
38		John M.	sen.	May 1891	late Lark City
39		John M.	sen.	May 1891	late Lark City
40		John M.	sen.	May 1891	late Lark City

[illegible]



## Highlights

- Outreach!!!
- Digitized Archives Program
- Oral History Initiative
- Records Retention Schedule

## Looking Ahead...

- Ongoing Digitization
- FTE retention
- Security and Preservation of Records



## *Records & Archives*



# Contracts & Procurement

The Mission of Salt Lake County Contracts and Procurement is to provide professional, efficient purchasing services and promote fair and open competition to attain the best value for the County.

Bids

Contracts

Surplus & e-Waste

Vendor Management

Training

Purchase Card

Solicitations

Project Tracking

Sustainable Purchasing

RFP

RFB

Sole Source

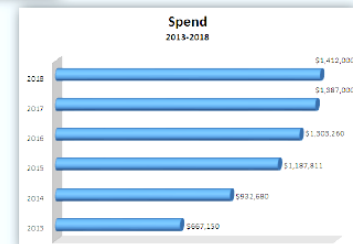
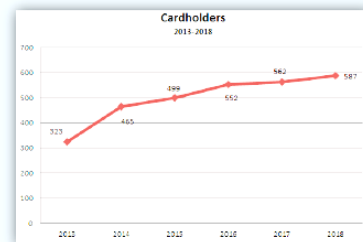
## Highlights

- Customer Service Surveys
- TCO – IT Contracts
- Active Performance Management
- Surplus Reutilization
- P-Card Program Improvements

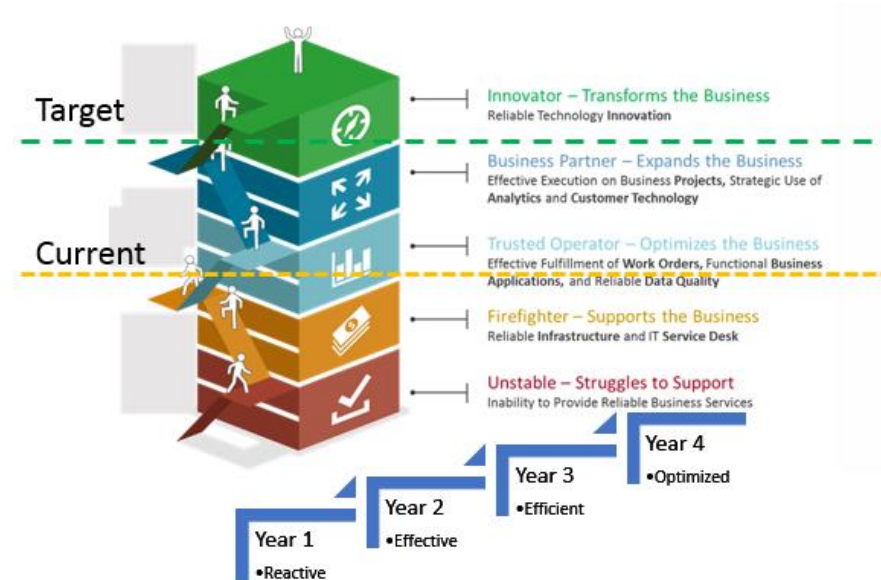
### P-Card Program

#### Salt Lake County's Purchasing Card program

- 580 cardholders
- 200 approvers
- Increased cardholders by 93%
- Doubled monthly spend



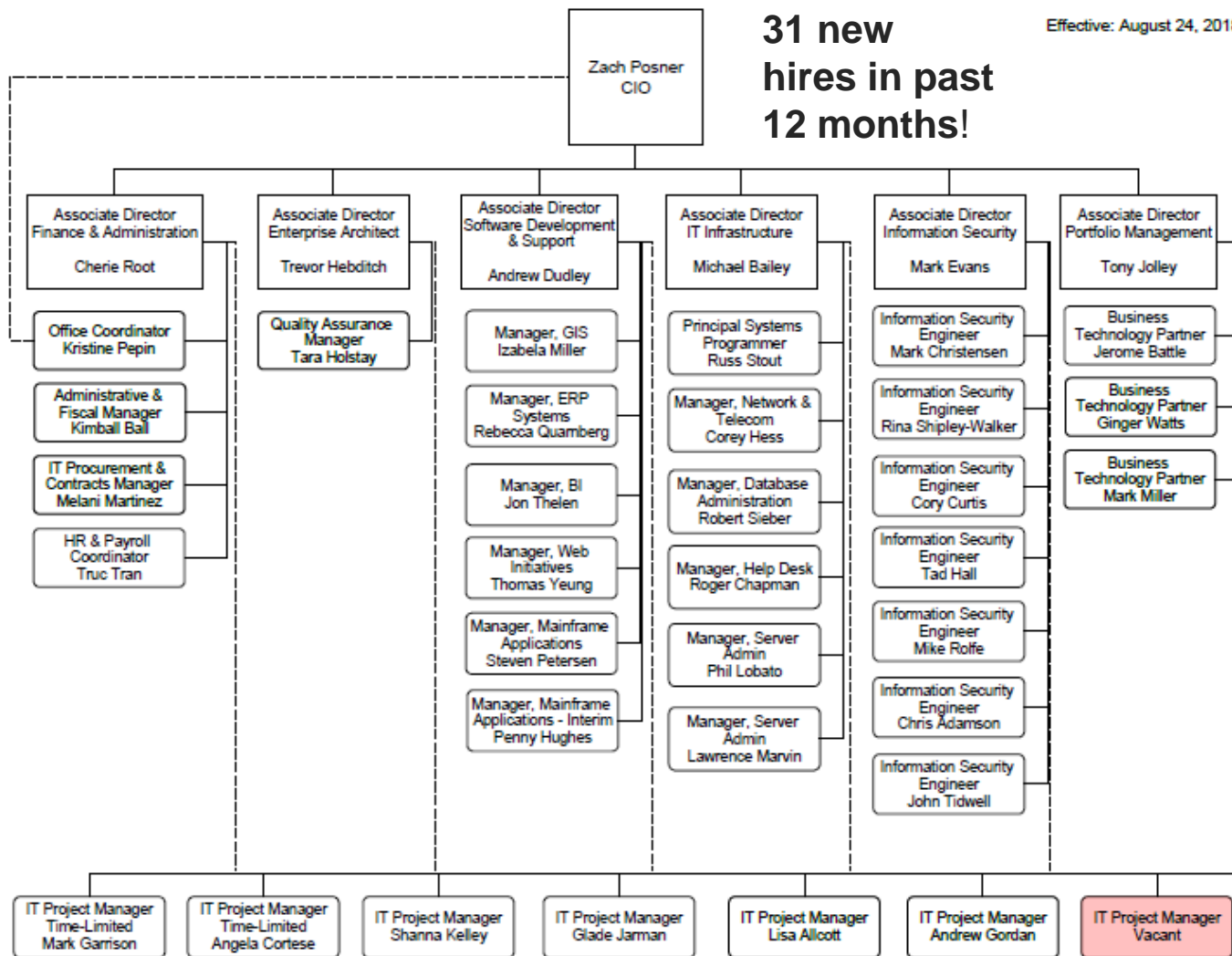
# Information Services



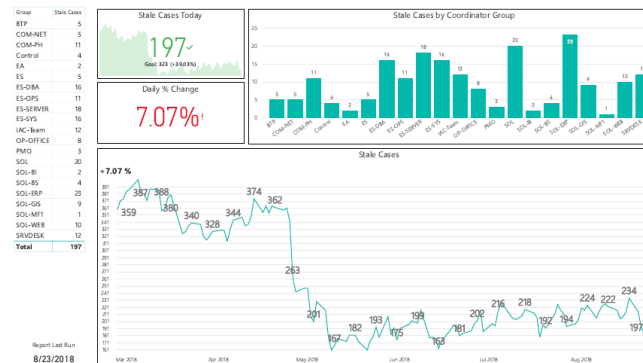
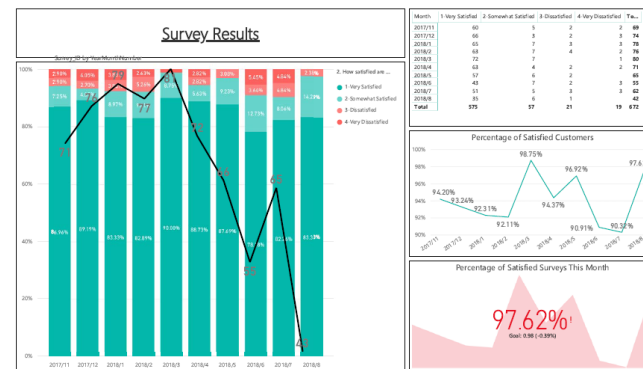


**31 new  
hires in past  
12 months!**

Effective: August 24, 2018



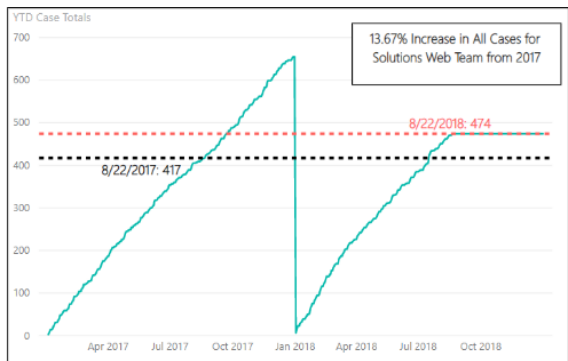




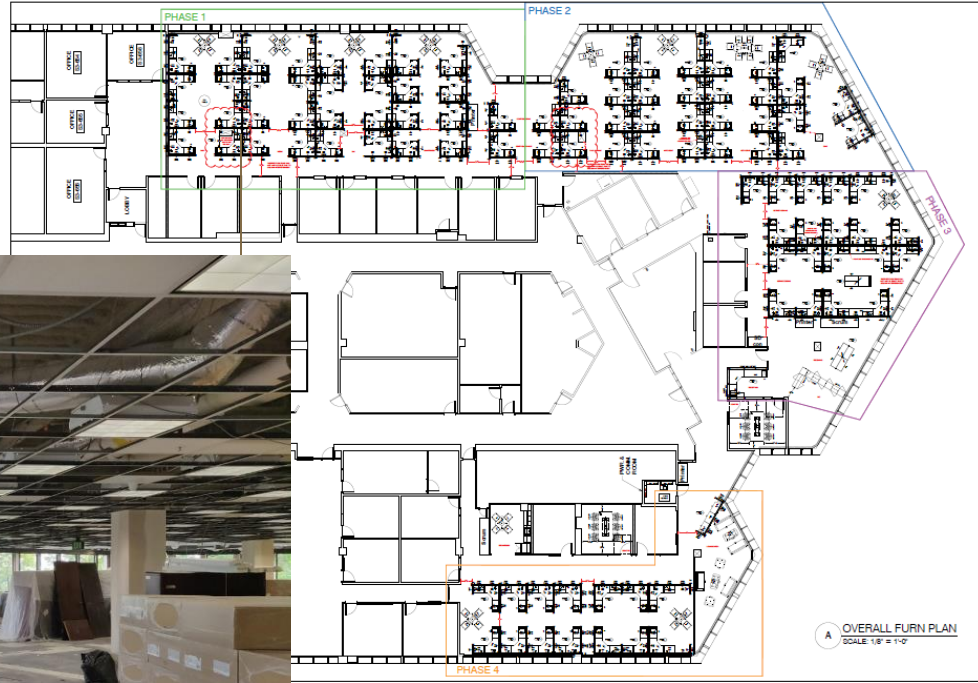


## Additional Highlights

- TAB – Update Last Week
- GIS
- Data-driven Web Update
- BI Collaborations
- SIRE Replacement
- Business Continuity
- Multi-Factor Authentication
- IS move to South Building 3rd Floor



13.6%



<b>SCOPACQUES - GOV. COMPLEX</b> BUREAU AND FLOOR 1000 AMSTERDAM		REFERENCE NUMBER EXPEDITION DATE DATE NAME ADDRESS CITY COUNTRY TELEPHONE FAX E-MAIL COMMENTS	 INTERNATIONAL BUSINESS TRAVEL SERVICE INC.
NAME: <u>US</u> COMPANY: <u>71432</u> ADDRESS: <u>U.S.</u> CITY: <u>AMSTERDAM</u> COUNTRY: <u>UNITED STATES OF AMERICA</u> TELEPHONE: <u>0000000000000000</u> FAX: <u>0000000000000000</u> E-MAIL: <u>0000000000000000</u> COMMENTS: <u>0000000000000000</u>	INTERNATIONAL BUSINESS TRAVEL SERVICE INC.		



# Facilities Services

Salt Lake County Facilities constructs and maintains environmentally-conscious and sustainable properties in support of County agencies and its citizens.

Energy  
Management

Project  
Management

Carpentry

Electronics

Electric

HVAC

Locksmith

Plumbing

Printing

Capital  
Improvements

Government  
Center

County-Wide  
Services





## *Facilities*



### Highlights

- Facilities Condition Assessment
- Capital Projects
- Work Order System Upgrade
  - Performance Reports
  - Automatic Work Order Billing Info
  - Customer Satisfaction Surveys

### Looking Ahead

- Agency Relocations
- Security Management
- Safety Management
- Energy Management

# Energy Management Road Map

- Achieve quick wins
- 1-2 years to long term energy plan
- Review time sensitive solar incentives
- Shared Savings
  - Return portion of savings to an Energy Savings Account for continued reinvestment

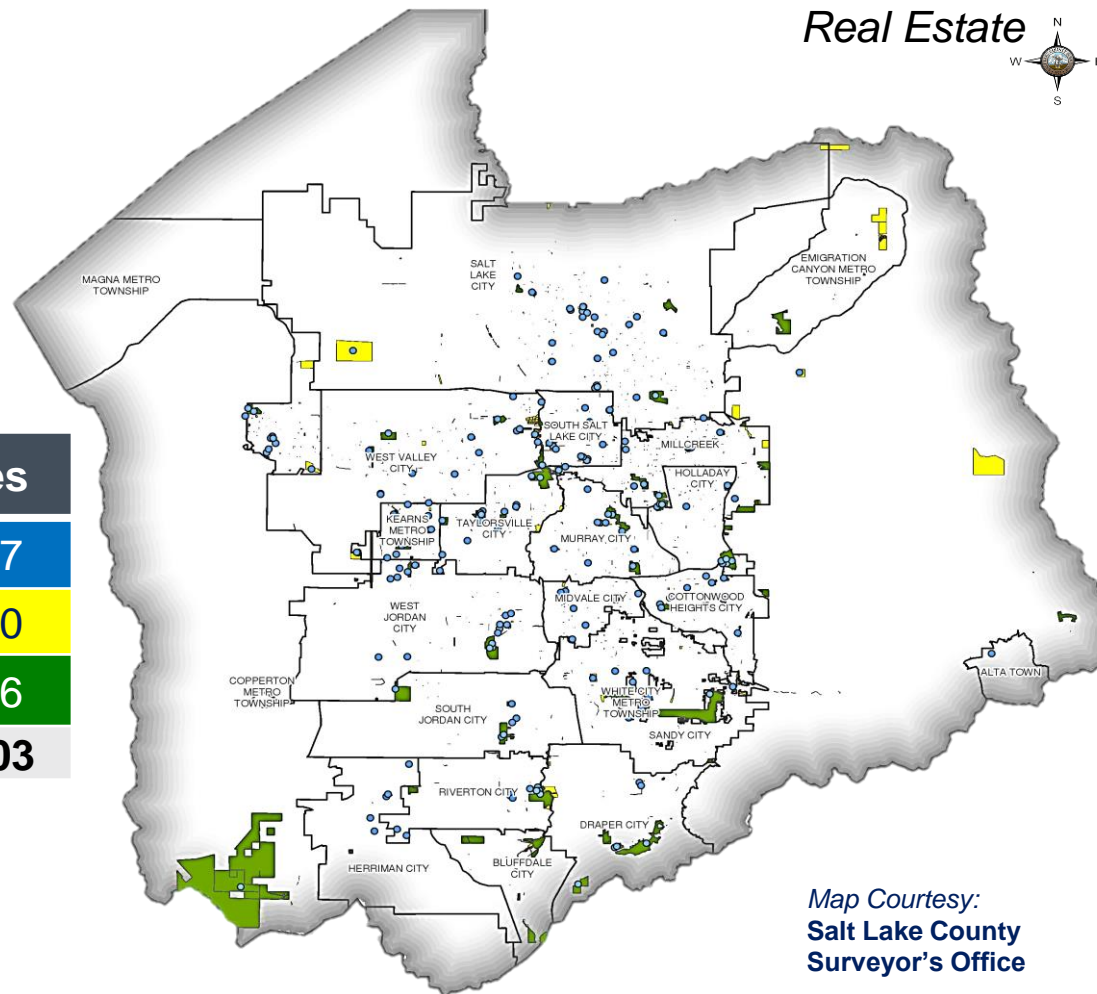


# Salt Lake County Real Estate

- Over 18,900 Acres

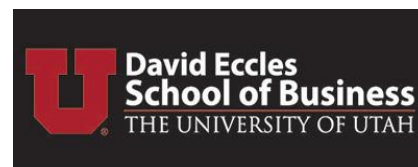
County Real Estate	Acres
County Facilities	3,437
County Parcels	9,070
Parks & Open Space	6,396
<b>TOTAL</b>	<b>18,903</b>

Source: Salt Lake County Surveyor's Office



## 2018 Major Initiatives & Challenges

- Acquisitions (Libraries, HRC, Parks and Rec, Open Space, Flood Control, Surplus Canal)
- Other: Appraisals, Surplus Property Sales, Property Search, Water Rights, Easements, Encroachments, Tax Deeds, Relocation
- Hiring Challenges
- Creating Baseline Data
- Process Mapping/ Process Improvement
- Web Redesign/Automation
- Digitize Lease Program (MRED)



5/733



# Office of Data & Innovation

## OUR FOCUS

### COUNTYSTAT

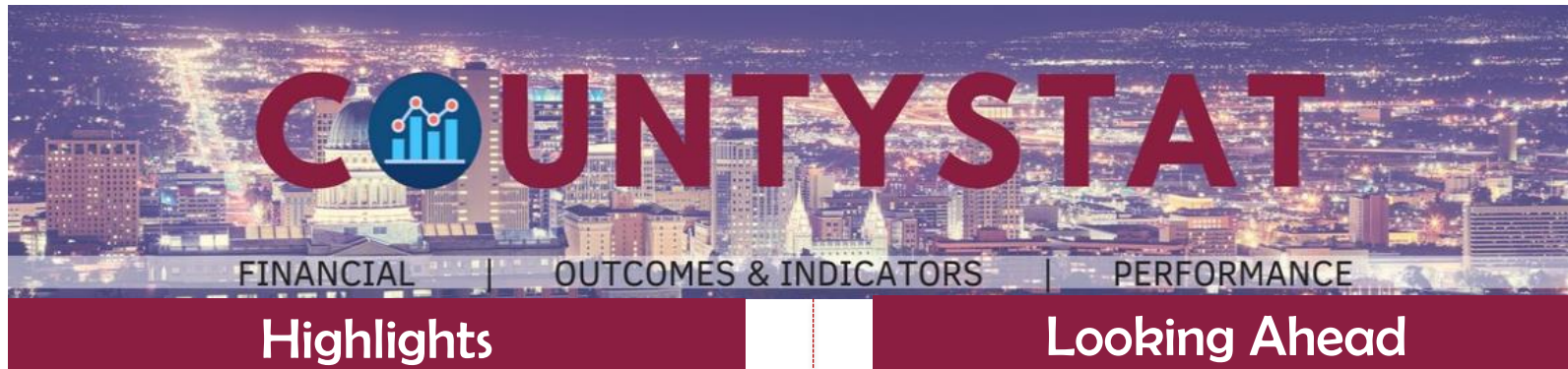
FINANCIAL  
OUTCOMES & INDICATORS  
PERFORMANCE

### METROSTAT

COUNTY SERVICES  
REGIONAL BENCHMARKS  
OPEN DATA

### PROCESS IMPROVEMENT

mini MIMS  
IDEA LAB



## Highlights

- CountyStat Launch (Pilot)
  - Financial
  - Outcomes & Indicators
  - Performance Measure
- U of U MPA Program Partnership
- Mini MIMs
- Process Improvement

## Looking Ahead

- CountyStat Countywide
- Resources & Capacity Development
- Innovation Lab
- MetroStat



**THANK YOU...**