

Salt Lake County West General Plan

Preview of Online Community Engagement Meetings

February 2021

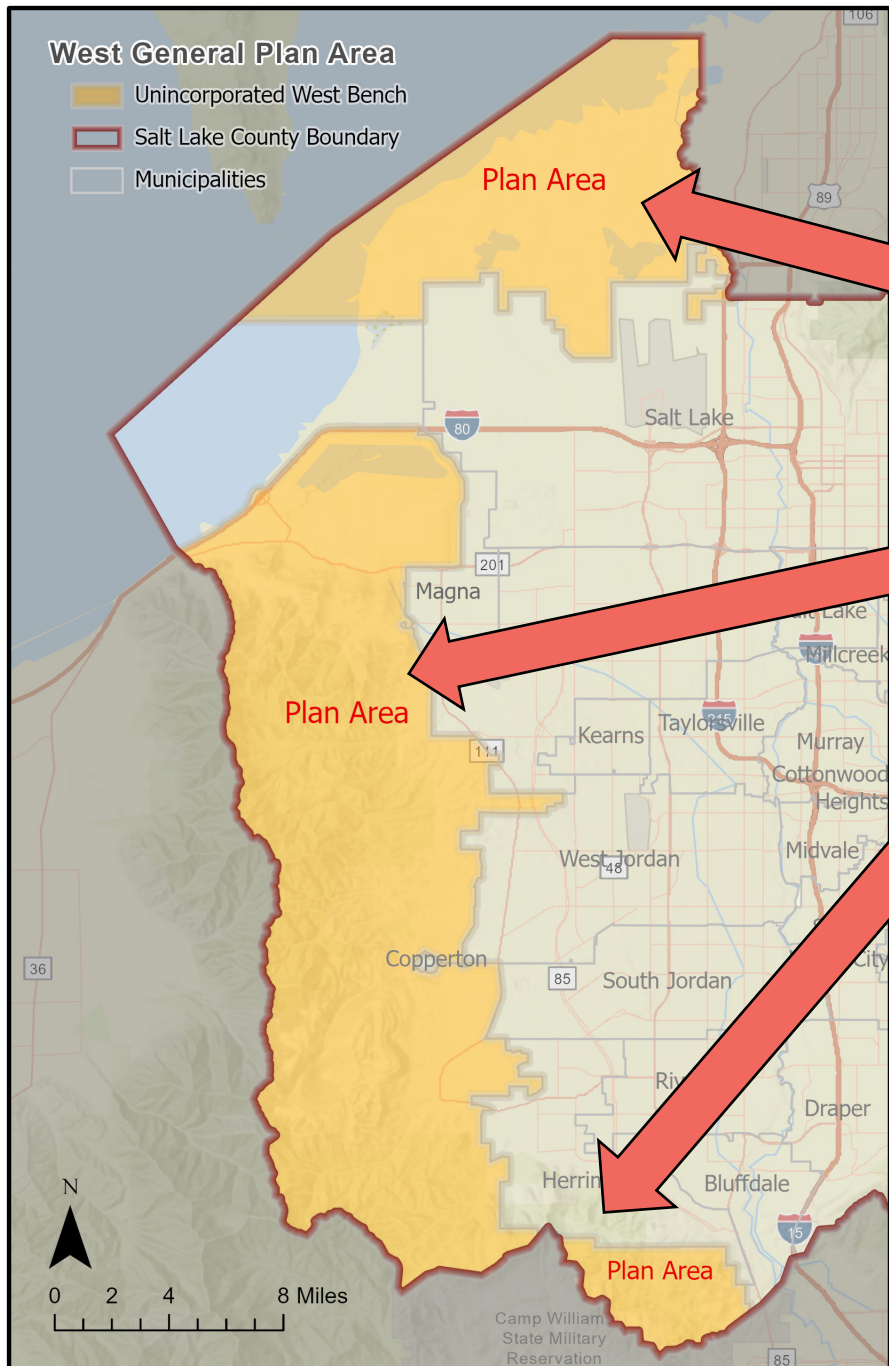
Ryan Perry, Planning & Transportation Division Director
Jake Young, Planning Program Manager
Helen Peters, Transportation Program Manager
Thomas McMurty, Transportation Consultant

What are General Plans?

- **A long range or comprehensive plan for Counties**
- **Typically, General Plans consider a 15–20-year planning horizon, but this plan goes even a little farther into the future.**
- **General Plans are required by Utah State code (17-27a-403)**

What is included in a General Plan?

- **Required to cover Land use, Transportation, and Housing**
- **The West General Plan will also include Environment & Conservation, Recreation, Economy, Utilities & Public Safety**



Major Areas of the Plan

Shoreline Heritage

North & Central Oquirrh

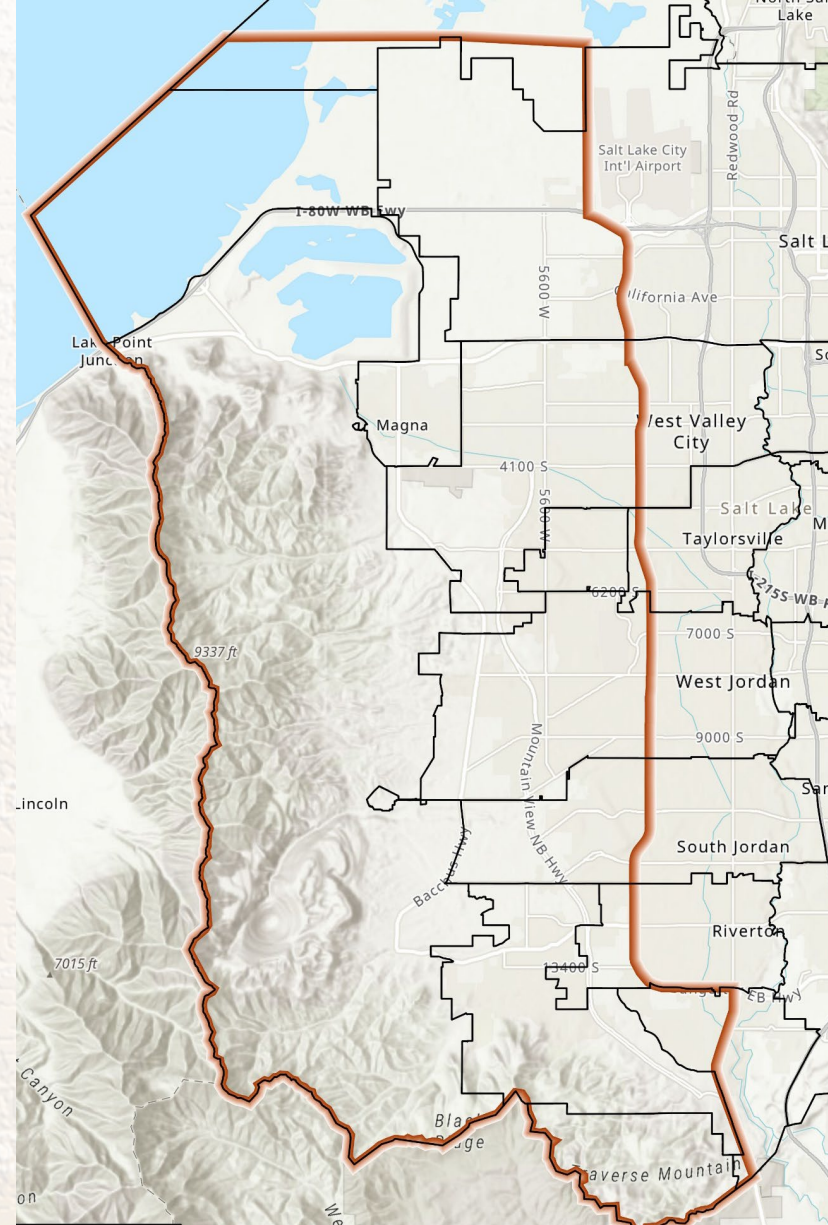
SW Oquirrh & Traverse Mountains

What has happened so far?

Oquirrh View Existing Conditions Report

Two Year Regional Study
2018/19 – 173 pgs.,
Bangerter to top of
Oquirrhrs

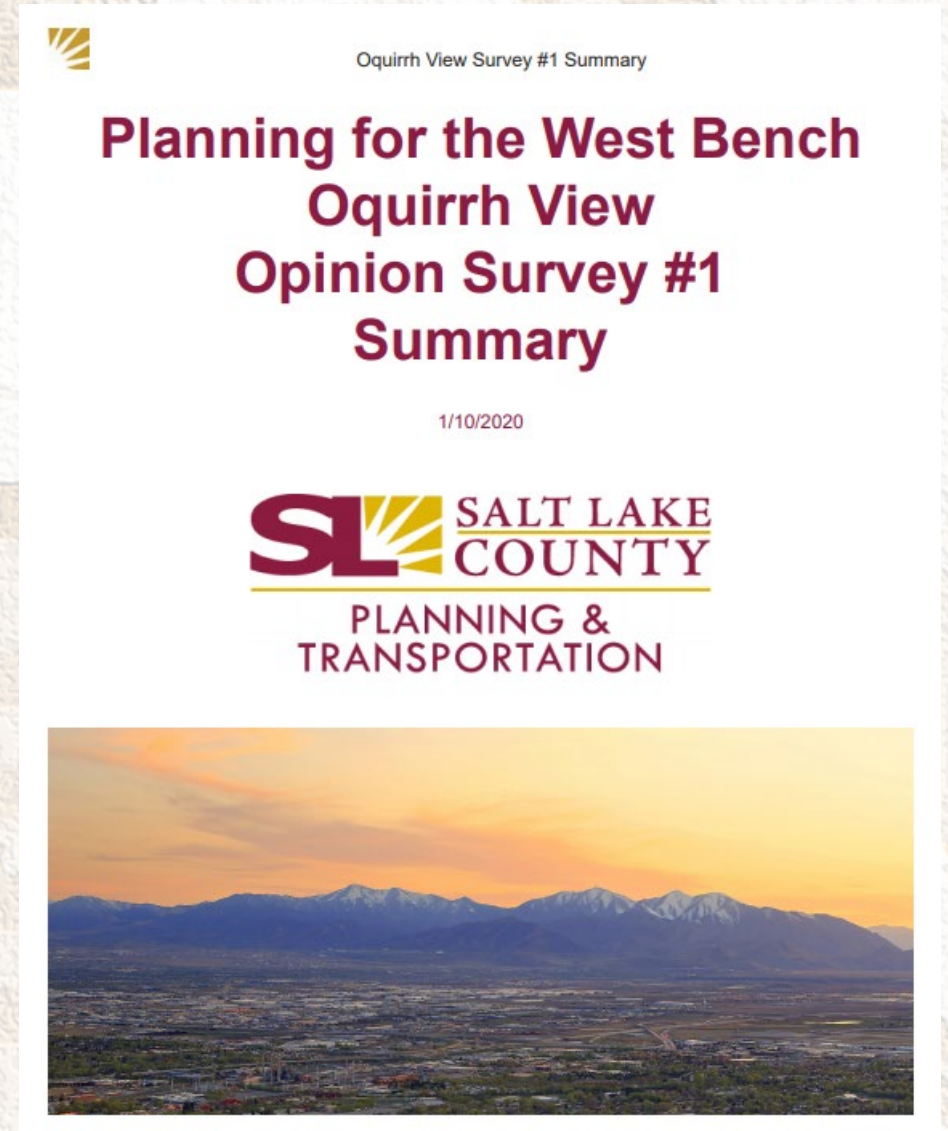
OquirrhView.org



What has happened so far?

Public Survey # 1 Conducted fall 2019

- **Topics:**
- **Issues of Concern**
- **Recreation**
- **Land Use**
- **Transportation**
- **Housing**
- **2,534 completed surveys**



Groundwork:

- Cities
- Stakeholders
- Landowners and managers
- Audubon/ Rio Tinto ISSR
- Rio Tinto Oquirrhhs
- Camp Williams
- SLCo Yellow Fork/Rose
- others 2018-present



What has happened so far?

- Ongoing Planning Commission participation
- Regular Steering Committee meetings
- Meetings with stakeholders and elected officials

What has happened so far?

Public [Survey](#) #2 Draft Vision
Aug-Sept 2020

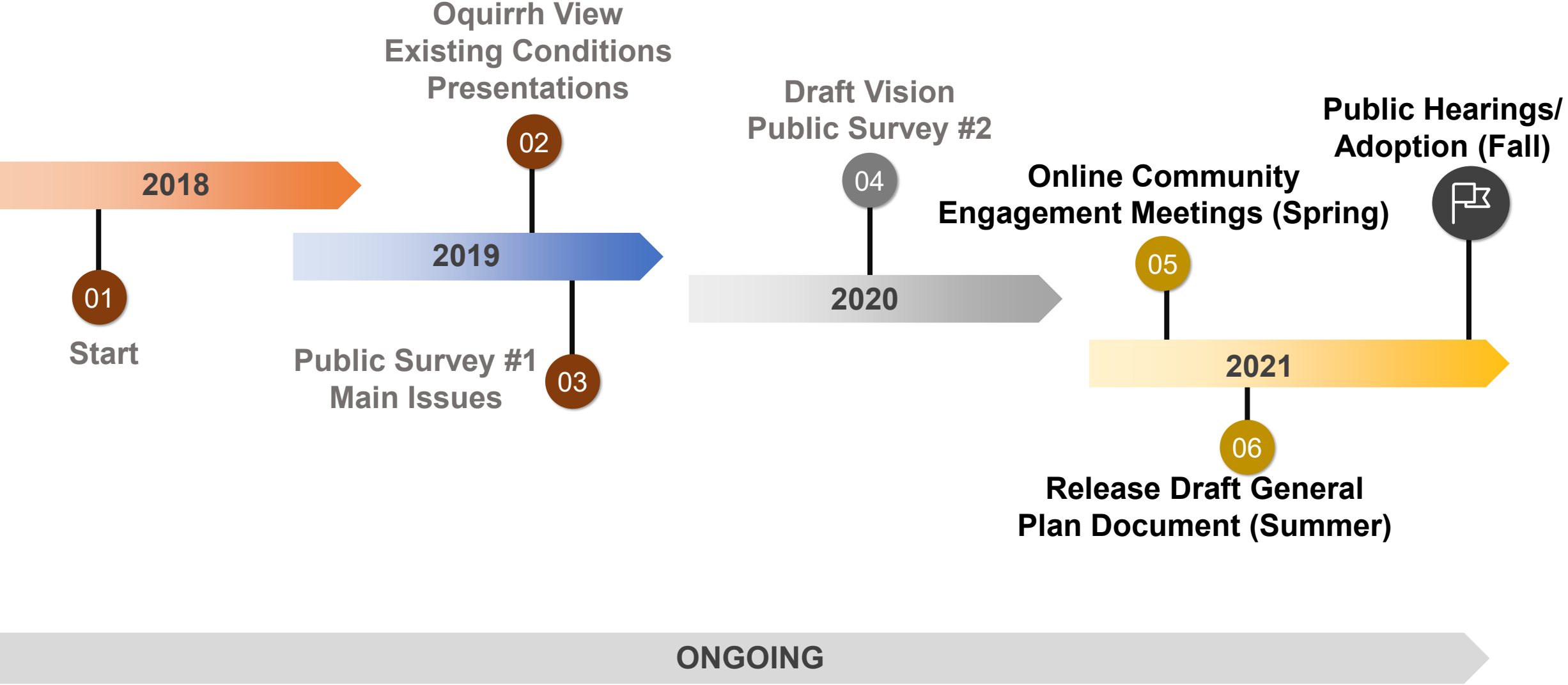
- 2066 Total Responses (Spanish & English)
- 3,876 comments
- Please review survey if you have not seen it

Vision Topics Include:

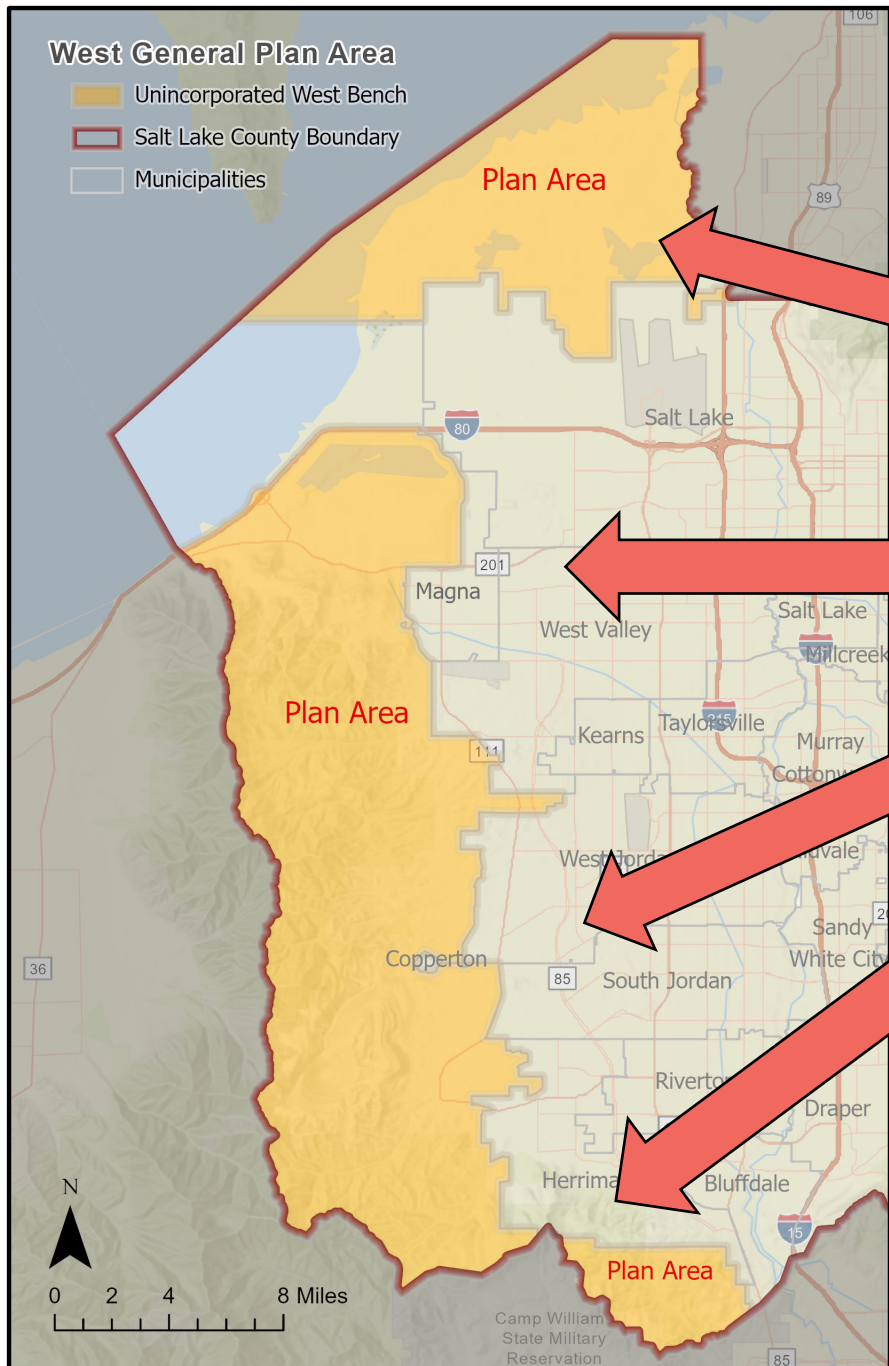
1. Land Use
2. Housing
3. Transportation
4. Environment and Conservation
5. Recreation
6. Economy
7. Utilities and Public Safety



Plan Timeline



RESEARCH – LISTENING – REACHING OUT
– INVOLVING (PLANNING COMMISSION, STAKEHOLDERS, STEERING COMMITTEE, COUNTY COUNCIL, PUBLIC)



Focus Areas for Online Meetings

- 1) Shoreline (SLC, Env. Groups)
- 2) North Oquirrhrs (Magna, WVC, Kearns)
- 3) Central Oquirrhrs (WJ, SJ, Herriman)
- 4) SW Oquirrhrs/Traverse Mountains (Herriman, Riverton, Bluffdale, Camp Williams)
- 5) Municipal Stakeholders

Outline for Online Community Engagement Meetings

- 1) Background Video (5-7 min.)**
- 2) Presentation & Online Participation (20 min.)**
- 3) Panel Discussion with Audience Submitted Questions (30 min.)**

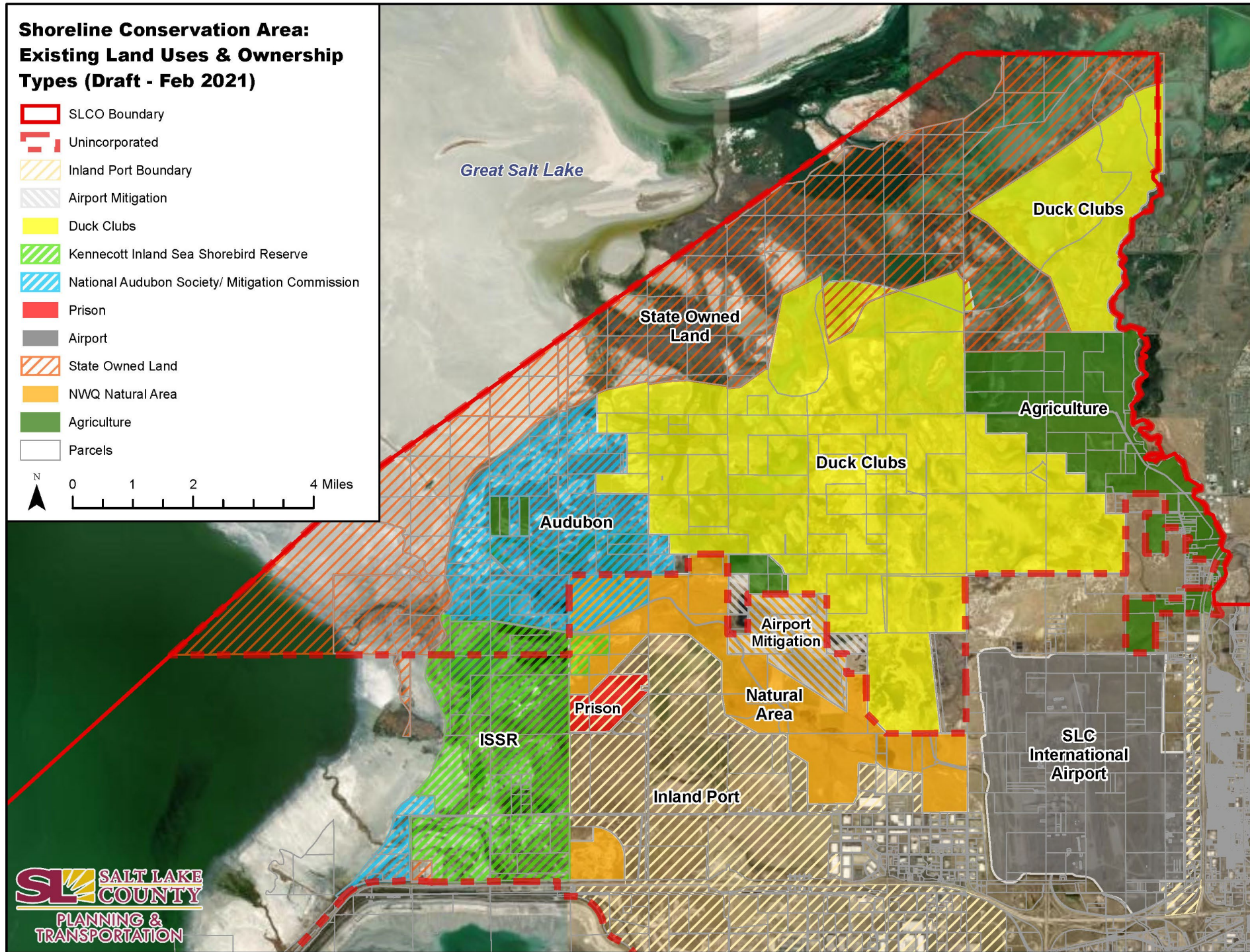
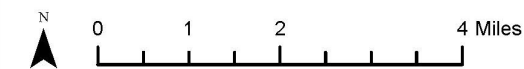
Shoreline Area



Photo Credit – Evan Barrientos Audubon

Shoreline Conservation Area: Existing Land Uses & Ownership Types (Draft - Feb 2021)

-  SLCO Boundary
-  Unincorporated
-  Inland Port Boundary
-  Airport Mitigation
-  Duck Clubs
-  Kennecott Inland Sea Shorebird Reserve
-  National Audubon Society/ Mitigation Commission
-  Prison
-  Airport
-  State Owned Land
-  NWQ Natural Area
-  Agriculture
-  Parcels



Shoreline

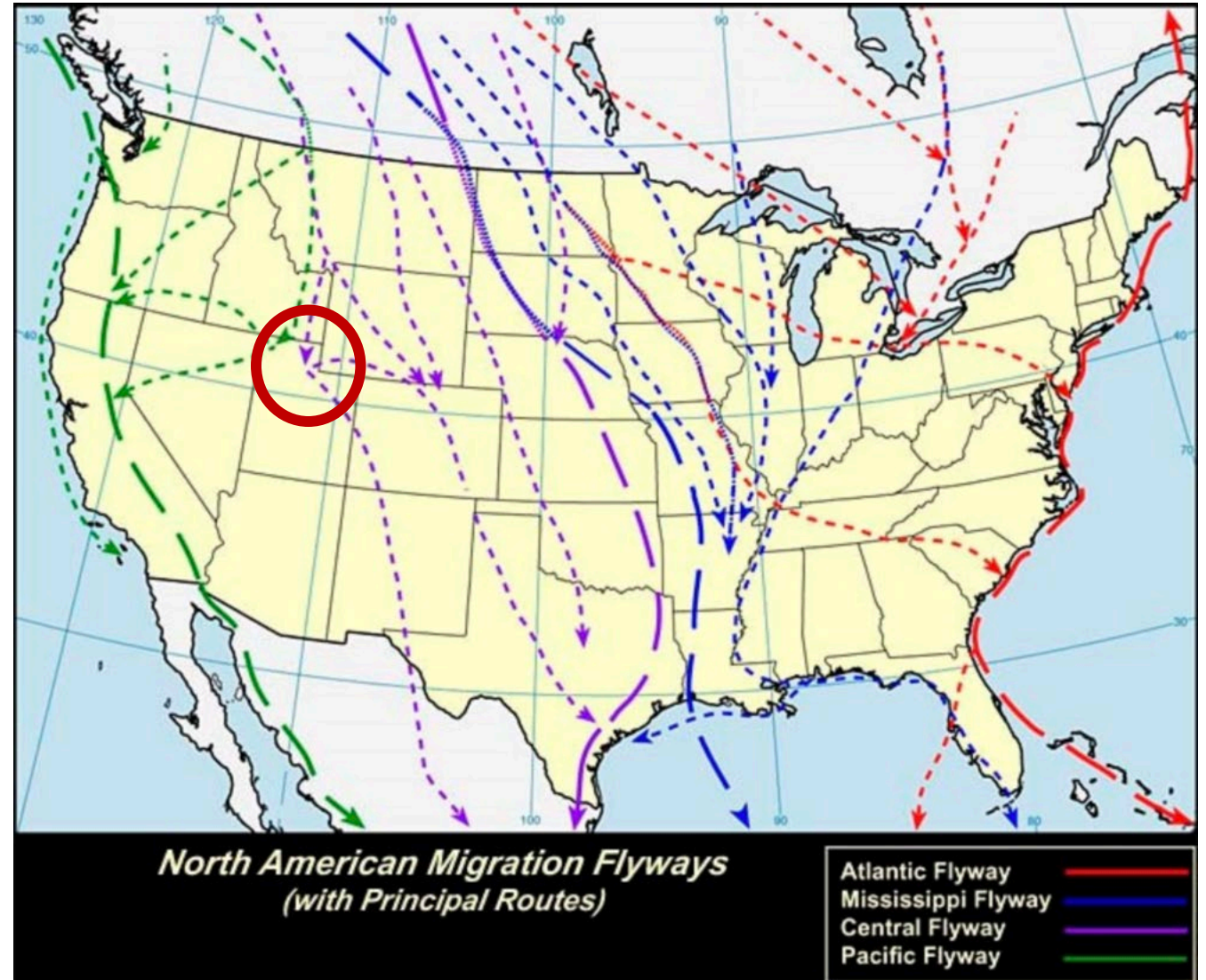
“Water levels in Great Salt Lake – the largest saline lake in the Western Hemisphere – are in decline, threatening billions of dollars in economic activity, a globally important ecosystem, local public health, and other critical values that the lake supports, including the lake’s essential contribution to Utah’s water cycle through lake effect precipitation.” Source

State of Utah GSL Resolution HCR 10 Executive Summary Recommendations to Ensure Adequate Water Flows to Great Salt Lake and Its Wetlands

Photo Credit – Evan Barrientos Audubon



Global bird flyways and the Great Salt Lake



Shoreline

Duck Clubs

- Established water rights
- Habitat creation
- Conservation
- Historic uses of hunting & grazing
- Private properties

MAP
SHOWING PROPERTY OF
RUDY GUN CLUB
SALT LAKE COUNTY
UTAH

SCALE: 1-IN. = 400 FT.
SEPTEMBER 1920

J. M. SNOW
Civil & Mining Engineer
Judge Building
Salt Lake City, Utah

Shoreline

Bird Refuges/Conservation Area

- Private properties
- Habitat creation
- Current Uses: habitat preservation/grazing

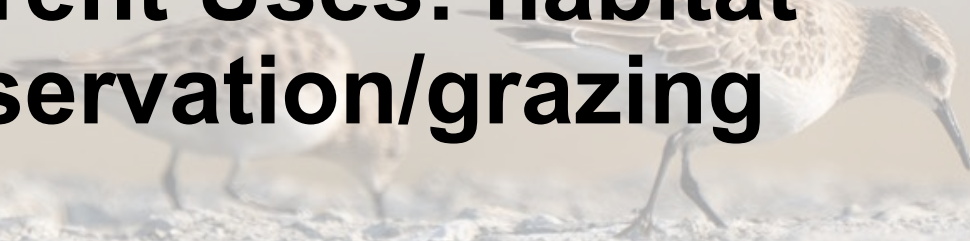


Photo Credit – Evan Barrientos Audubon

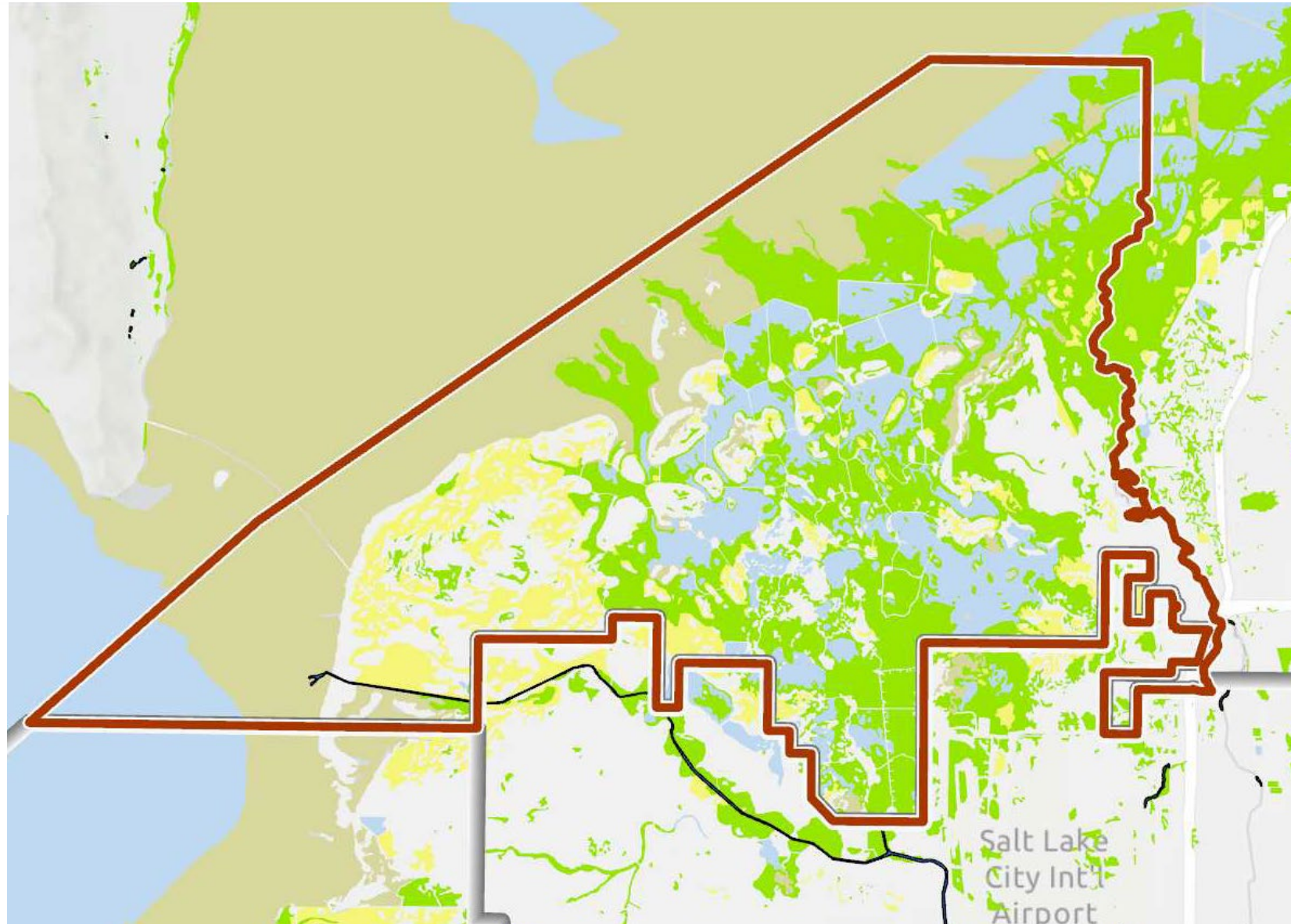
Shoreline

Agriculture uses since 1890s

- Private properties
- Habitat compatible
- Conservation
- Continued uses grazing, farming, hunting

Shoreline Wetlands

Wetland Classification



Shoreline Area Issues and concerns

- **Preserved areas and farms will remain private and isolated**
- **Potential effects from a hotter and drier Utah climate**
- **Great Salt Lake shrinking over time**
- **Potential road expansions**
- **Potential utility corridor expansions**
- **Potential use of agriculture lands for development**
- **Conflicting uses between bird habitats and airport operations/future expansions**
- **Illegal dumping**
- **Invasive species**
- **Stormwater management**
- **Lighting from adjacent operations affects bird species**

Shoreline Area Opportunities

- Additional opportunities to further preserve land and habitat
 - Creation of buffers between uses and habitats
- Continue agricultural uses and farm preservation
- Potential public outreach/education center (Rio Tinto) to understand bird habitat
- Potential for partnerships to achieve common goals

Photo Credit – Evan Barrientos Audubon




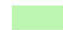

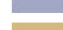
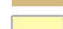


Shoreline Area – Potential General Plan Recommendations

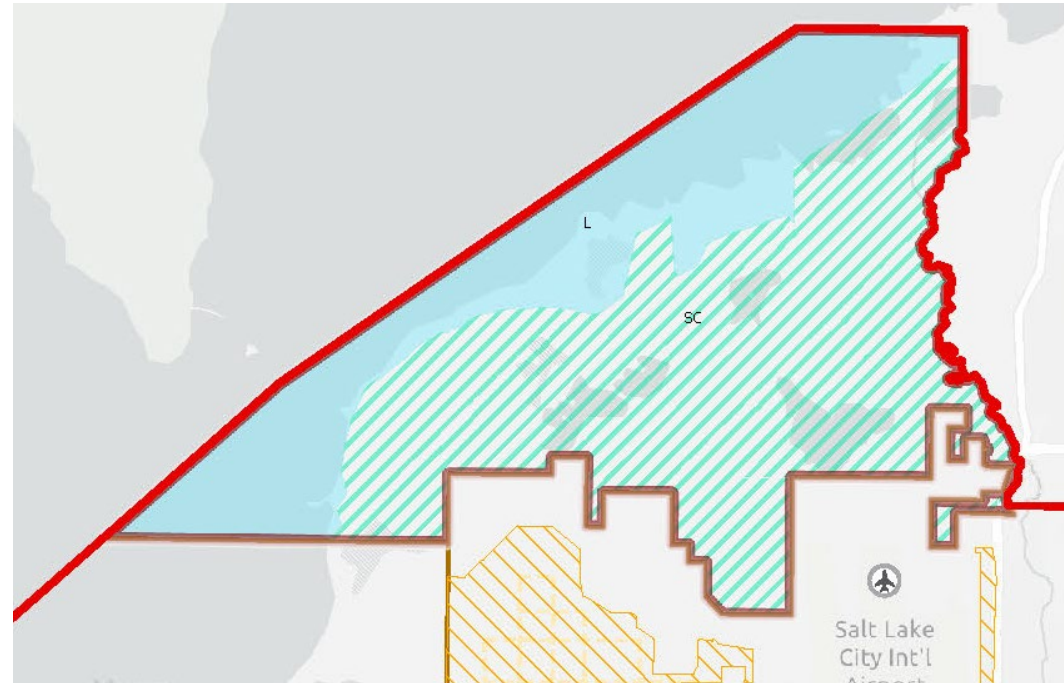
- **Promote awareness of the shoreline area and the ecological contribution to the Great Salt Lake watershed and ecosystem**
- **Future land use and zoning changes**
- **More efforts on water conservation (for all areas)**
- **Ensure future transportation and utilities are compatible with conservation goals**
- **Explore and consider conservation tools**
- **Additional collaboration on removing invasive weeds**

Credit – Evan Barrientos Audubon

Draft Future Land Use Map

Future Land Use (DRAFT - Feb 2021)

-  RTP (2019-2050) New Roadway
-  Inland Port
-  SLCO Boundary
-  Limited Development Until Post-Mine Closure
-  Master Planned Communities
-  Municipalities
-  AG - Agriculture
-  CM - Commercial
-  CN - Conservation
-  I - Industrial
-  L - Lake
-  ML - Military
-  MN - Reclaimed--Historic Mine
-  PR - Public Recreation
-  R - Residential
-  RR - Rural Residential
-  SC - Shoreline Conservation (AG & Habitat)
-  Unincorporated Boundary



Shoreline Area – Potential General Plan Recommendations

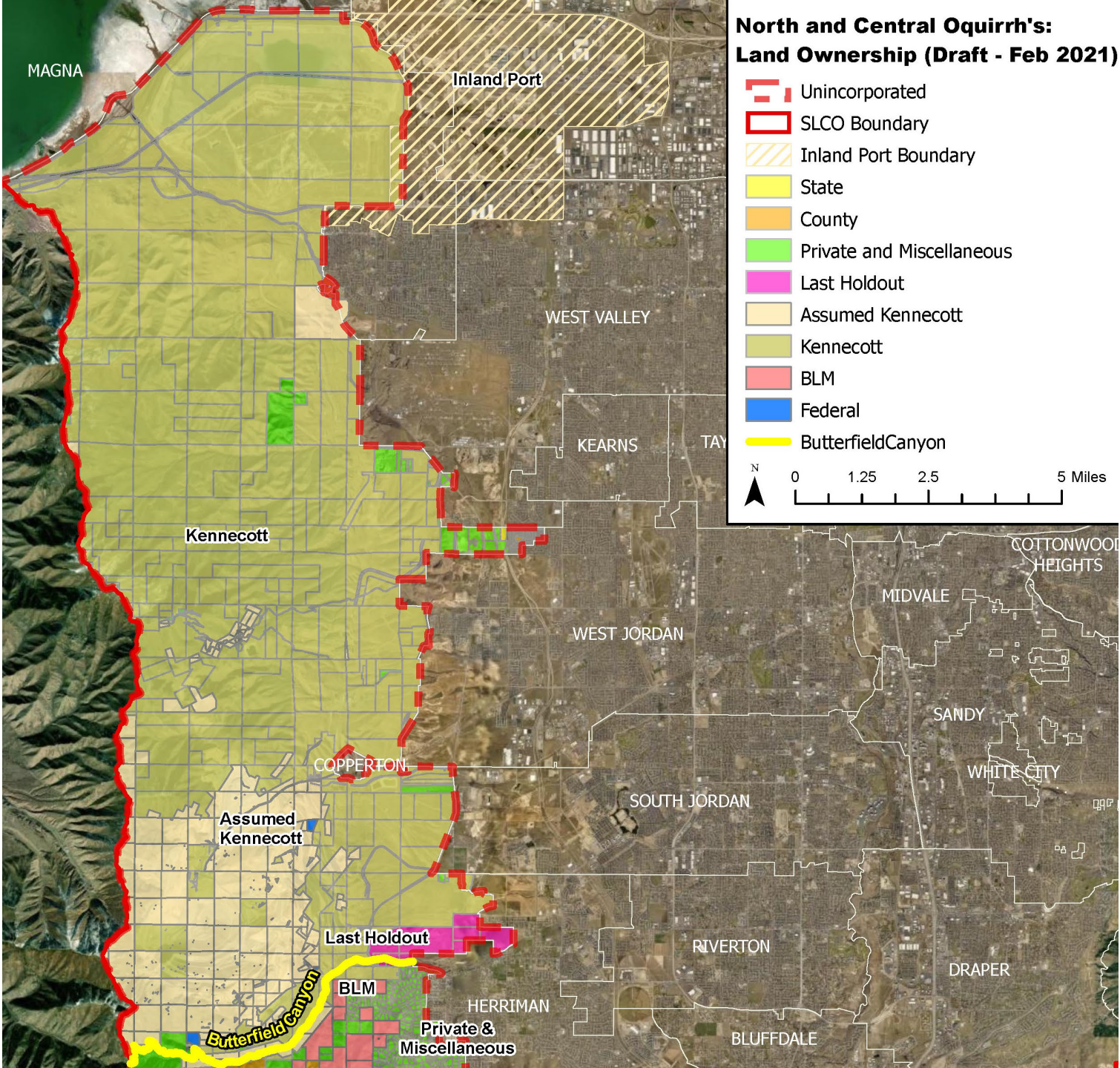
- What do you recommend ?

Photo Credit – Evan Barrientos Audubon

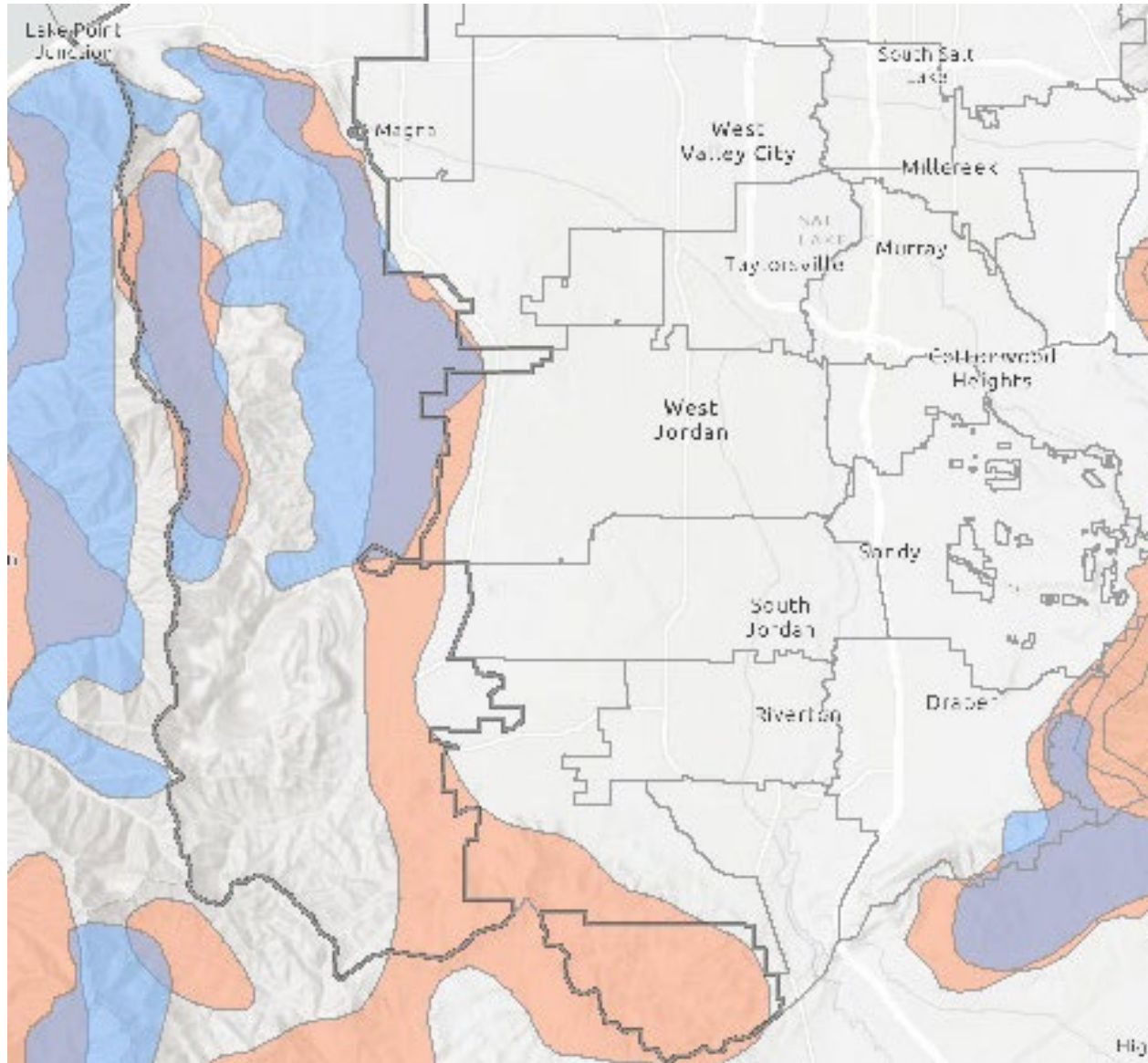
North/Central Oquirrh



North/ Central Oquirrh's



North/Central Oquirrh - Habitat



West General Plan: Mammal Habitats

- Elk Habitat
- Mule deer Habitat
- Municipalities
- Unincorporated Boundary



0 1.5 3 Miles

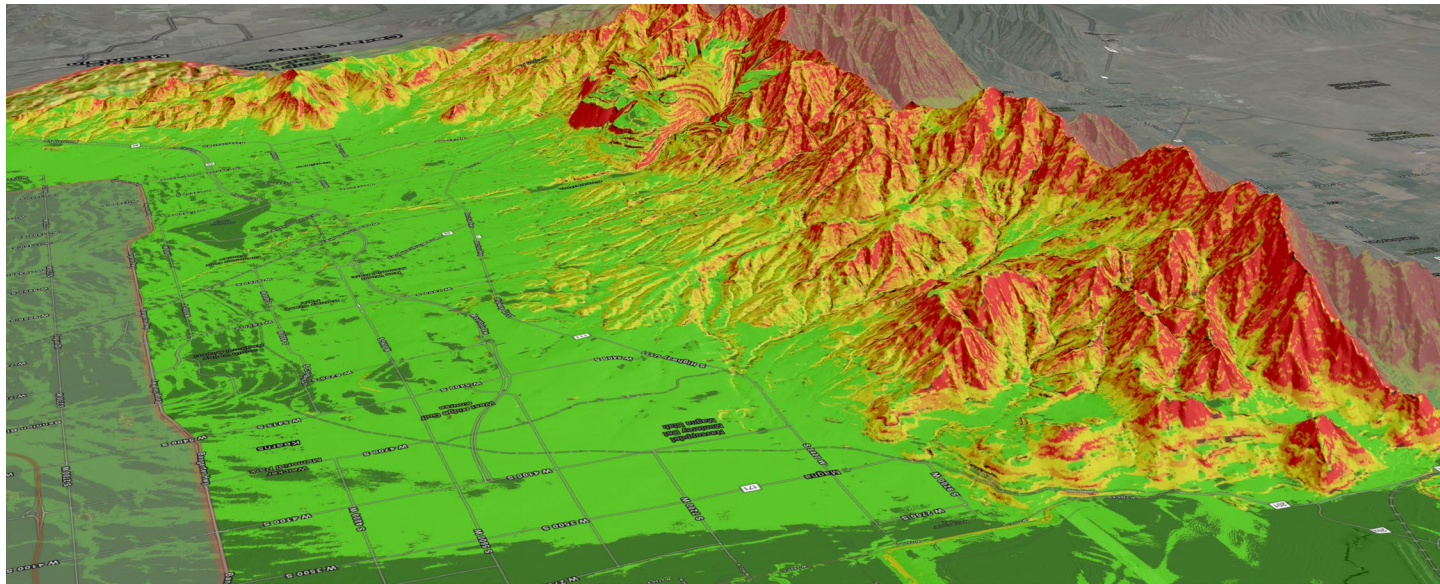
North/Central Oquirrh Background on Oquirrh

Wasatch

Oquirrh



Cross Section from Nelson Peak to Twin Peaks



North/Central Oquirrh

Background on historical uses (mining)

- **Bingham – Kennecott Mine began operation in 1906**
- **Deepest/ largest open pit mine in the world**
- **Approximately $\frac{3}{4}$ mile deep and 2.5 miles wide**
- **11,500 acres have been restored at the cost of 500 million dollars**
- **Current proposed operation timeframe to early-mid 2030s**

North/Central Oquirrh

Issues and concerns

- **Post-mining impacts**
- **East-west traffic**
- **Need for additional transportation systems**
- **Need for additional local jobs**
- **Water availability**
- **Utility infrastructure for fast growing areas**
- **Potential loss of habitat and forested areas in Oquirrh**
- **Land development and growing population near active mining areas**
- **Wildfire risks**
- **Housing affordability**
- **Air quality/sustainability**

North/Central Oquirrh Opportunities

- Time to plan/improve transit and transportation solutions
- Mining related uses:
 - Reclamation
 - Conservation of natural lands and habitats
 - Development of new recreational trails and parks
 - Potential for clean energy production (e.g. solar)
 - Potential for master planned communities with centers, jobs, housing and recreation/open space
- Potential Midas area mid to near-term land development of 3500 acres
- Regional coordination of master planned communities among multiple jurisdictions
- West Bonneville Shoreline Trail running North to South

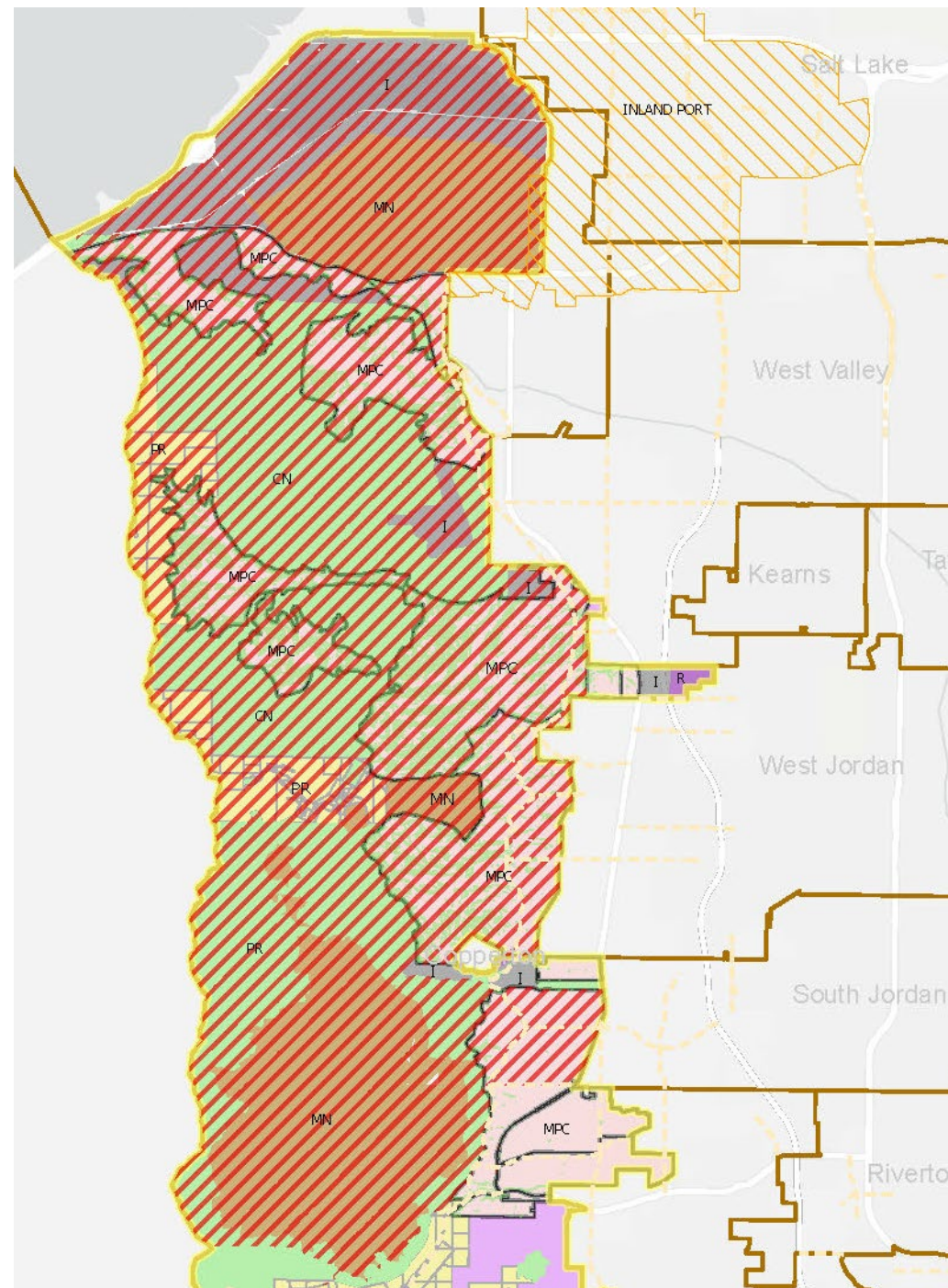
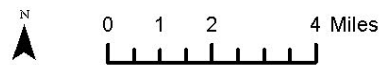
North/Central Oquirrh Potential General Plan Recommendations

- **Establish a regional land conservation plan and process**
- **County to collaborate with other jurisdictions in negotiating with Rio Tinto for land conservation and access to Oquirrh Mountains**
- **Continue mining reclamation process with Rio Tinto, County Health Dept., State Dept. of Environmental Quality, Utah Division Oil Gas, Mining and Environmental Protection Agency**
- **Potential future land uses:**
 - **Conservation, Public Recreation, Master Planned Communities, Light Industrial, and Industrial**
- **Update Master Planned Community process requiring detailed planning of utilities, transportation, housing, land conservation, jobs, zoning standards, etc**
- **Work with Rio Tinto to solidify agreements and alignments for future West Bonneville Shoreline Trail and associated trails**

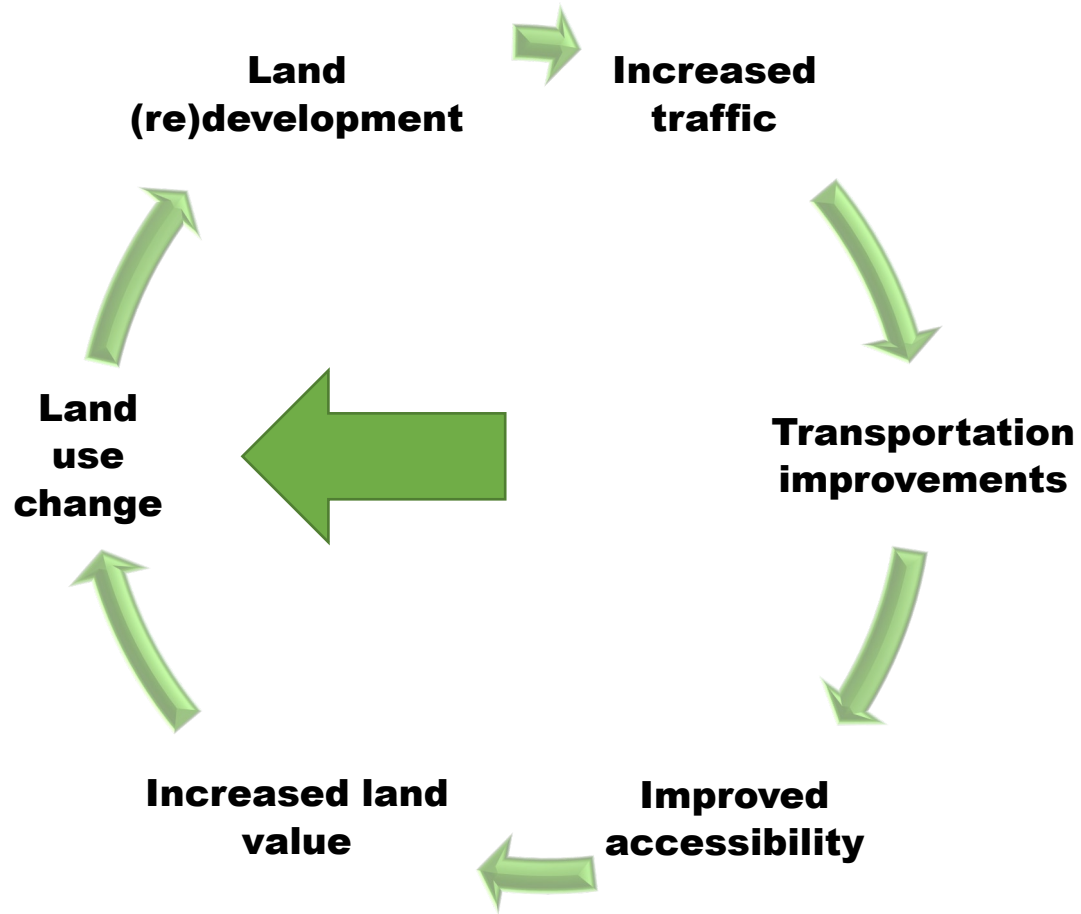
Draft Future Land Use Map

Future Land Use (DRAFT - Feb 2021)

- RTP (2019-2050) New Roadway
- Inland Port
- Limited Development Until Post-Mine Closure
- Master Planned Communities
- Municipalities
- AG - Agriculture
- CM - Commercial
- CN - Conservation (including rec. access)
- I - Industrial
- L - Lake
- ML - Military
- MN - Reclaimed--Historic Mine
- PR - Public Recreation
- R - Residential
- RR - Rural Residential
- SC - Shoreline Conservation (AG & Habitat)
- Unincorporated Boundary



Land Use & Transportation Relationship



The map displays the Salt Lake Valley with the following features:

- General Plan Area:** Indicated by a red dashed line.
- Existing AT:** Shown as red lines.
- AT Project 2021-2030:** Shown as light blue lines.
- AT Project 2031-2040:** Shown as green lines.
- AT Project 2041-2050:** Shown as yellow lines.

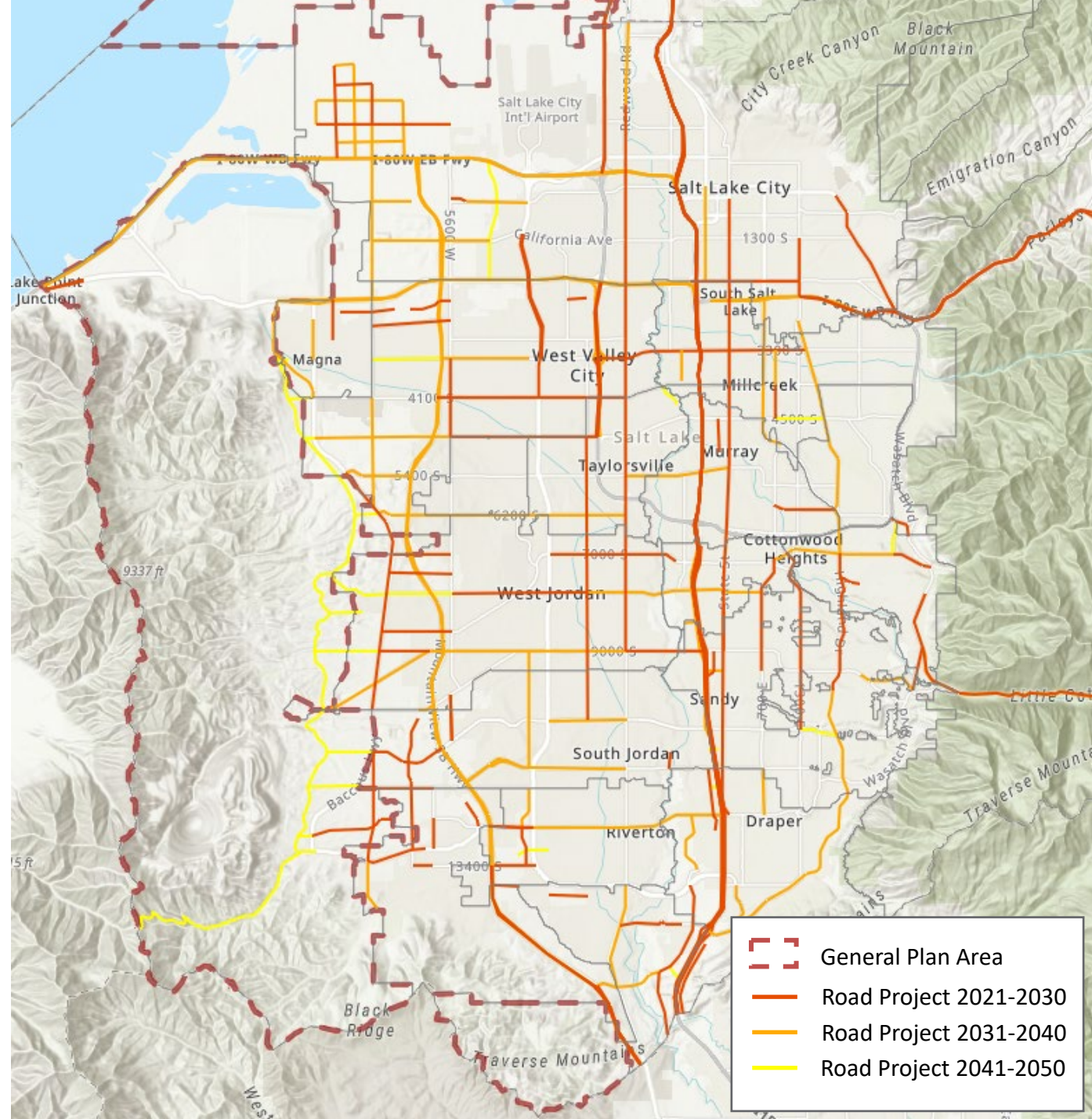
Geographical labels include Salt Lake City, West Valley City, West Jordan, South Jordan, Riverton, Draper, Sandy, Cottonwood Heights, Murray, Taylorsville, Magna, and South Salt Lake. Major highways shown are I-80 WB/EW and I-15. Topographical features like City Creek Canyon, Emigration Canyon, Parleys, Wasatch Blvd, and Traverse Mountains are also labeled.

-
- Topographic map of the Salt Lake Valley showing the General Plan Area. The map includes labels for cities like West Jordan, South Jordan, Riverton, Draper, and Cottonwood Heights. It also shows major roads, water bodies, and elevation contours. A red dashed line outlines the General Plan Area, which is highlighted in the legend.

Regional Transportation Plan Roads

Planned Projects

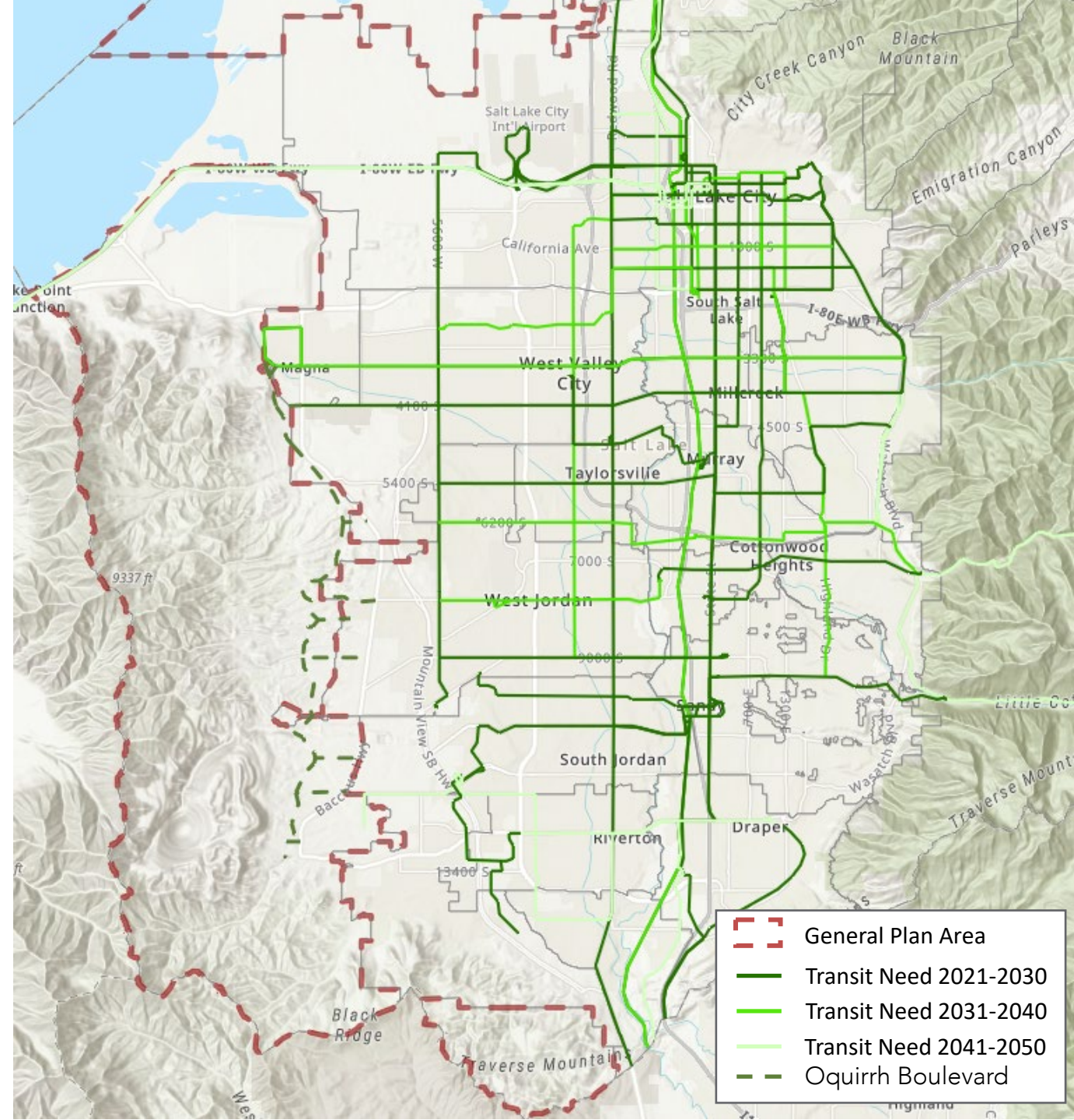
- Oquirrh Boulevard New Construction
- SR-111 Widening
- Herriman Parkway Extension
- Butterfield Canyon Road (Oquirrh Connection)
- East/West Connections
 - SR 201
 - 4100 South
 - 4700 South
 - 5400 South
 - 6200 South
 - 7000 South
 - 7400 South
 - 7800 South
 - 8600 South
 - 9000 South
 - New Bingham Highway
 - South Jordan Parkway
 - 11800 South
 - Herriman Highway



Regional Transportation Plan Transit

Planned Projects

- 3300 South / 3500 South Corridor - Core Route
- 3300 South / 3500 South Corridor - Bus Rapid Transit
- 3900 South / 4100 South Corridor - Core Service
- 11800 South to Olympia Hills – Core Service
- East/West Connections
 - 3500 South
 - 4100 South
 - 11800 South



Transportation Planning Best Practices

- Follow vision and principles
- Involve all modes
- Include all users
- Emphasize connectivity
 - Regional
 - Local
- Complement community context
- Flexibility



Regional Connectivity

AT Connections

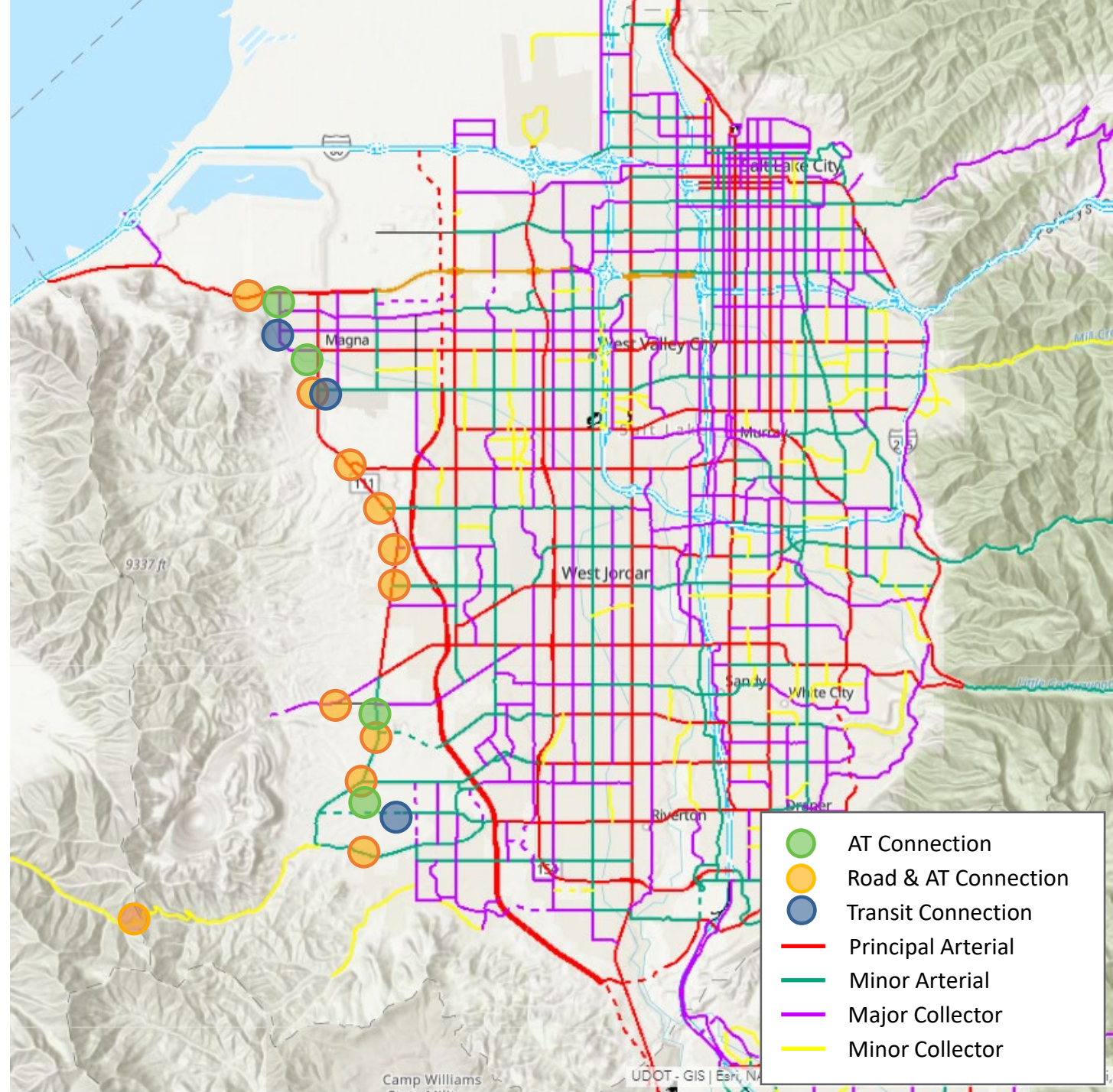
- Most bikeways/trails on regional roads
- Other Multi-use Trails
 - Decker Lake / Magna Trail
 - Bingham Creek Trail
 - Utah & Salt Lake Canal Trail
 - Midas Creek Trail

Transit Connections

- Limited to Magna and 11800 South

Road Connections

- Multiple corridors for east/west connections
- Most are to arterial roads (5/7 lanes)



Local Connectivity

Create a network with a varied set of urban street types

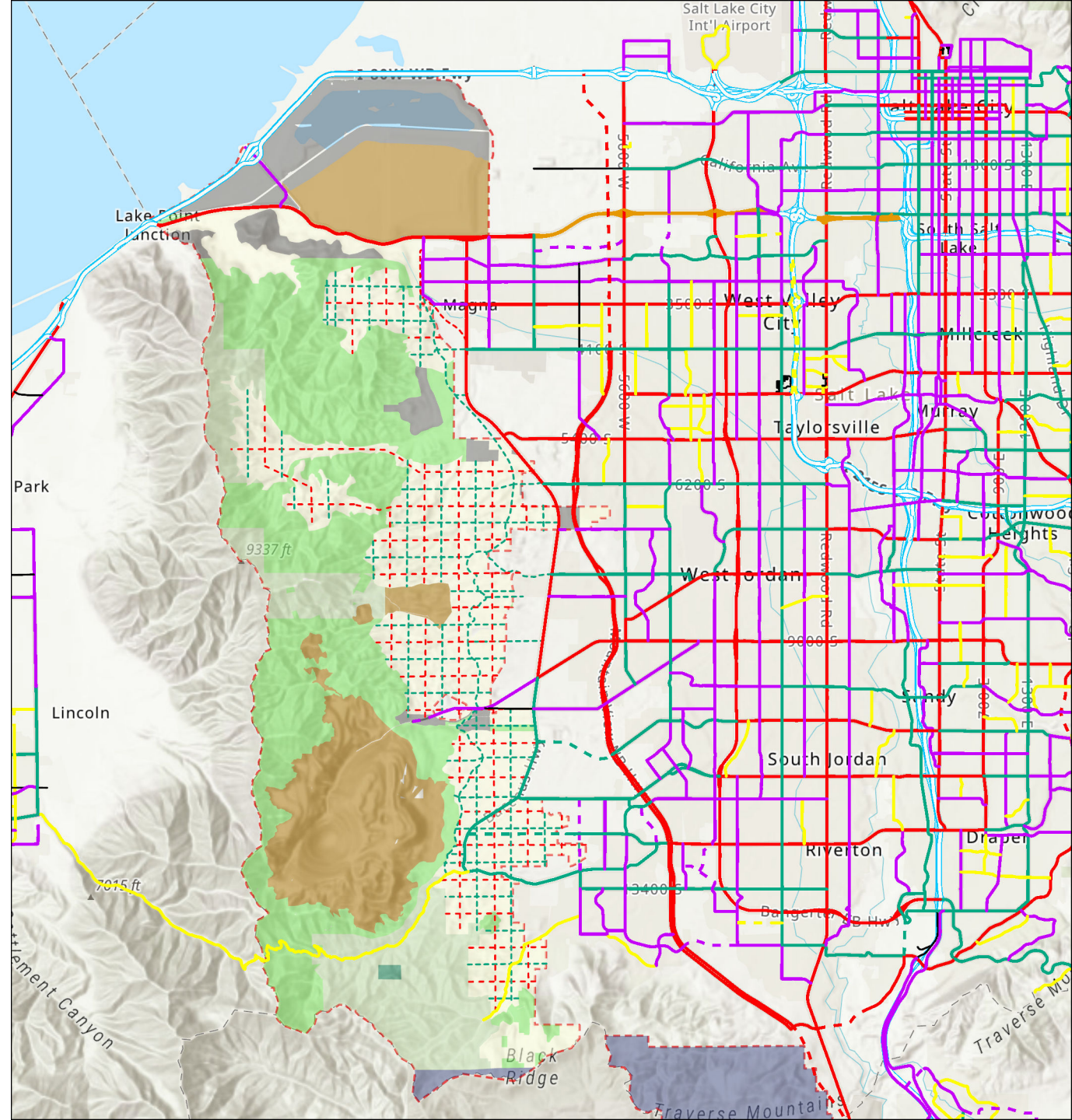
- Includes all users
- Accommodates all modes

Build a human-scale network

- Dense network of streets and intersections
- Attractive and convenient to pedestrians

Align and connect all new streets

- Consider street connectivity ordinance



North/Central Oquirrh – Potential General Plan Recommendations

- What do you recommend ?



Southwest Oquirrh & Traverse Mountains

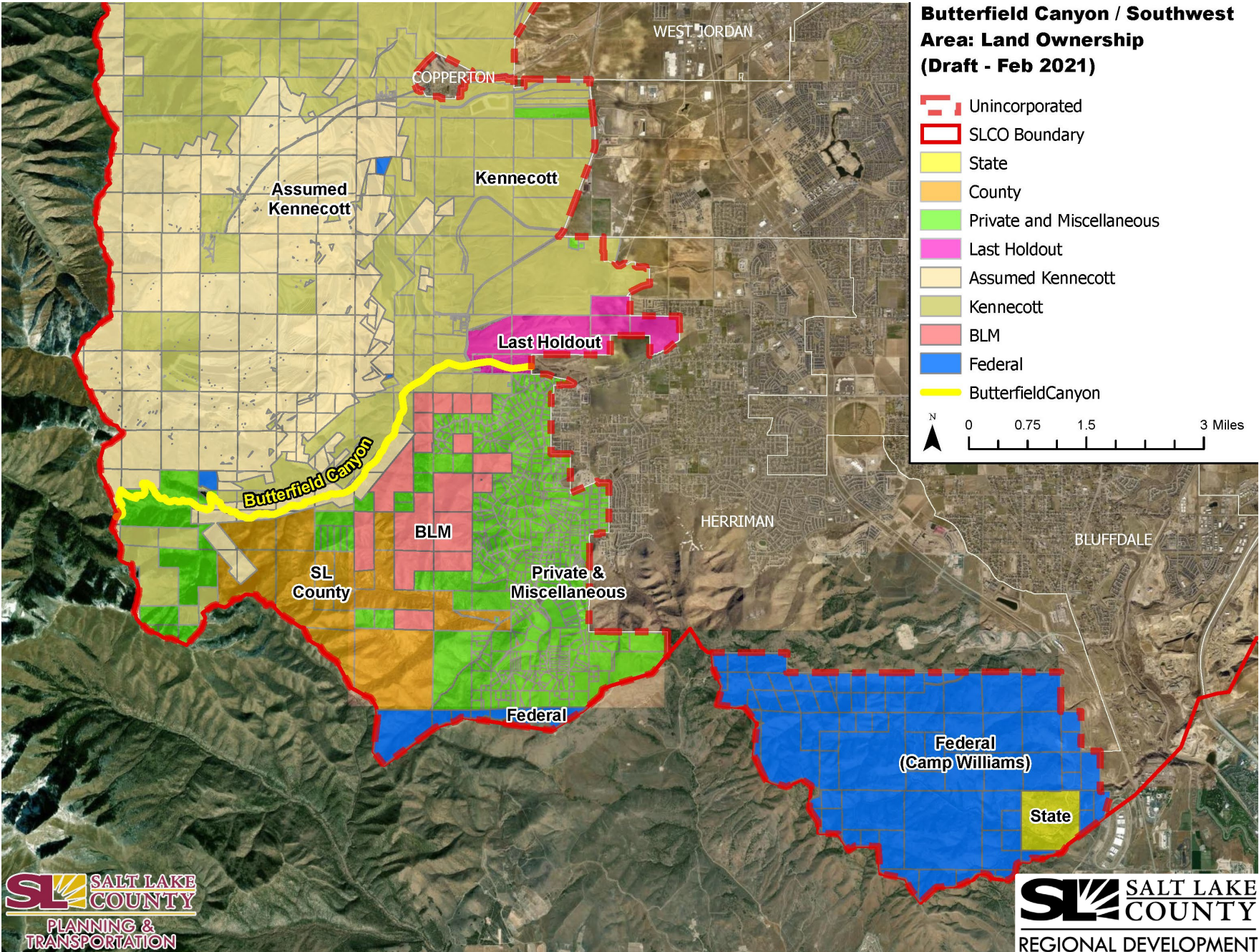


Southwest Oquirrh & Traverse Mountains

Camp Williams

- **Approximately 52 square miles (both Utah County and Salt Lake County)**
- **Began in 1914**
- **Provides training to Utah National Guard, local police and military forces**

Southwest Oquirrhrs & Traverse Mountains



Southwest Oquirrh & Traverse Mountains Issues

- East-west traffic
- Need for additional transportation systems
- Need for additional local jobs
- Water availability
- Utility infrastructure for fast growing areas
- Potential loss of habitat and forested areas in Oquirrh
- Drought and wildfire risks
- **Growing demand for Butterfield Canyon & Yellow Fork/Rose Canyon**
 - Road width, debris, graffiti, lack of cellular service, lack of amenities
 - Needed additional maintenance for trails and roads
 - Multiple landowners
- **Camp Williams**
 - Incompatible adjacent development, trespassing, wildfire risks, and poaching

Southwest Oquirrhhs & Traverse Mountains Opportunities

- **Butterfield, Yellow Fork and Rose Canyon could become a major outdoor recreation destination (comparable to Mill Creek or Corner Canyon)**
 - **Trails (hiking, running, mt. biking, and equestrian)**
 - **Landowners working together SLCo, BLM, Rio Tinto, Camp Williams, Herriman and others**
- **Camp Williams**
 - **Working to acquire lands for a 1/2 – 1 mile buffer around military base**
 - **Buffer would be used to reduce wildfire risk, habitat preservation, outdoor recreation (trails)**

Southwest Oquirrhhs & Traverse Mountains Potential General Plan Recommendations

- **Future land uses: Public Recreation, Conservation, Rural Residential, and Military**
- **SLCo to lead planning for Butterfield, Yellow Fork and Rose Canyon**
 - **Trails Master Plan in progress (hiking, running, mt. biking, and equestrian)**
 - **Butterfield Canyon road and recreation corridor planning with landowners and partners**
 - **Development of plan to finance improvements**
 - **Landowner collaboration (SLCo, BLM, Rio Tinto, Camp Williams, Herriman and others)**

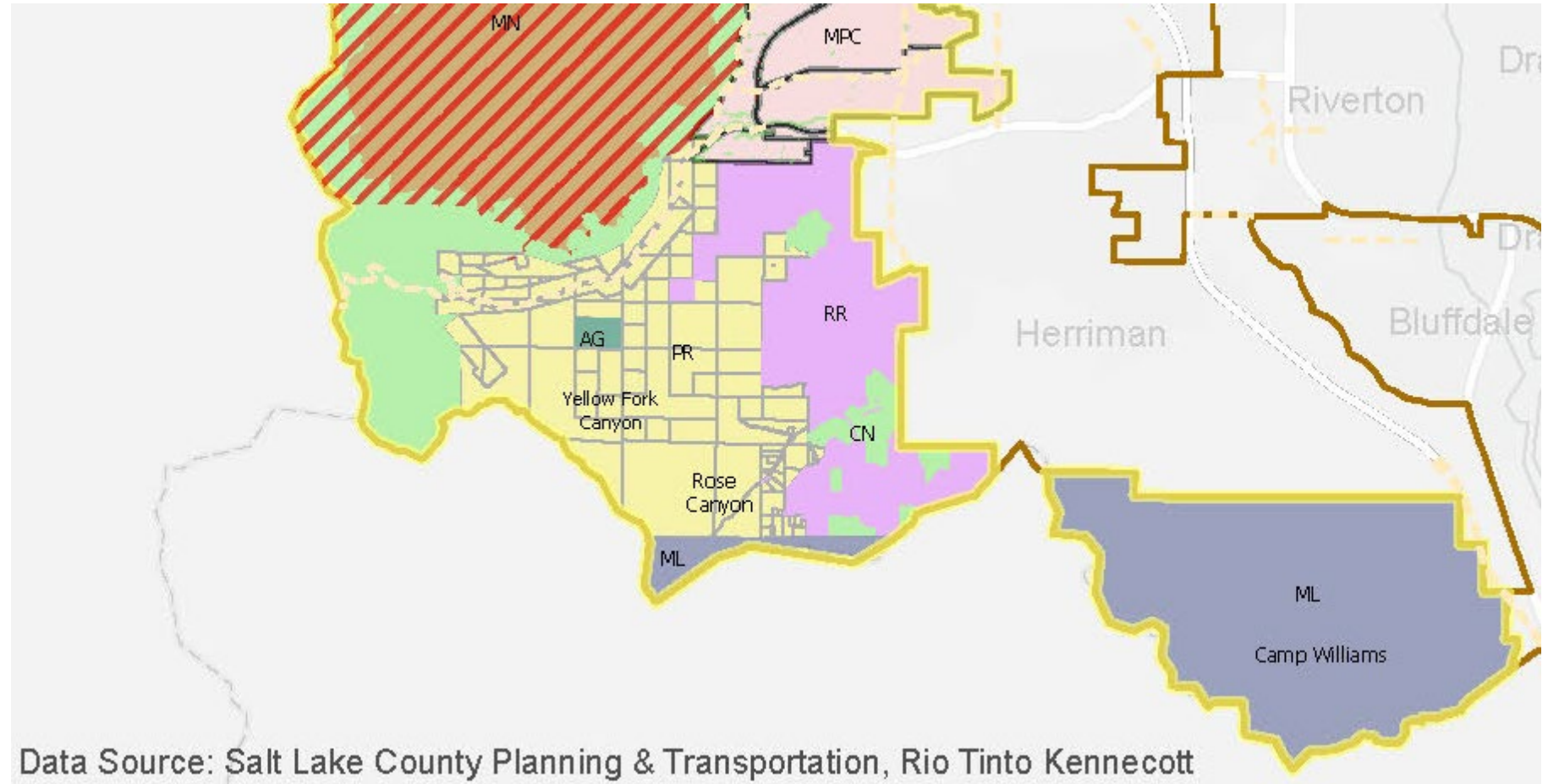
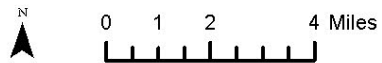
Southwest Oquirrhrs & Traverse Mountains Potential General Plan Recommendations

- **Acknowledge and support continued operations of Camp Williams for training of armed forces, guard and police**
- **Support Camp Williams with buffer lands, preservation of open space and outdoor recreation planning**
- **Work with Camp Williams to connect future preservation areas with the County's Yellow Fork and Rose Canyon trail system**
- **High Country Estates to continue as rural residential**

Draft Future Land Use Map

Future Land Use (DRAFT - Feb 2021)


- RTP (2019-2050) New Roadway
- Inland Port
- Limited Development Until Post-Mine Closure
- Master Planned Communities
- Municipalities
- AG - Agriculture
- CM - Commercial
- CN - Conservation (including rec. access)
- I - Industrial
- L - Lake
- ML - Military
- MN - Reclaimed--Historic Mine
- PR - Public Recreation
- R - Residential
- RR - Rural Residential
- SC - Shoreline Conservation (AG & Habitat)
- Unincorporated Boundary



Southwest Oquirrh & Traverse Mountains Potential General Plan Recommendations

- **What do you recommend?**





**“If everyone is moving forward
together, then success takes
care of itself.”**

Abraham Lincoln