

Report to County Council

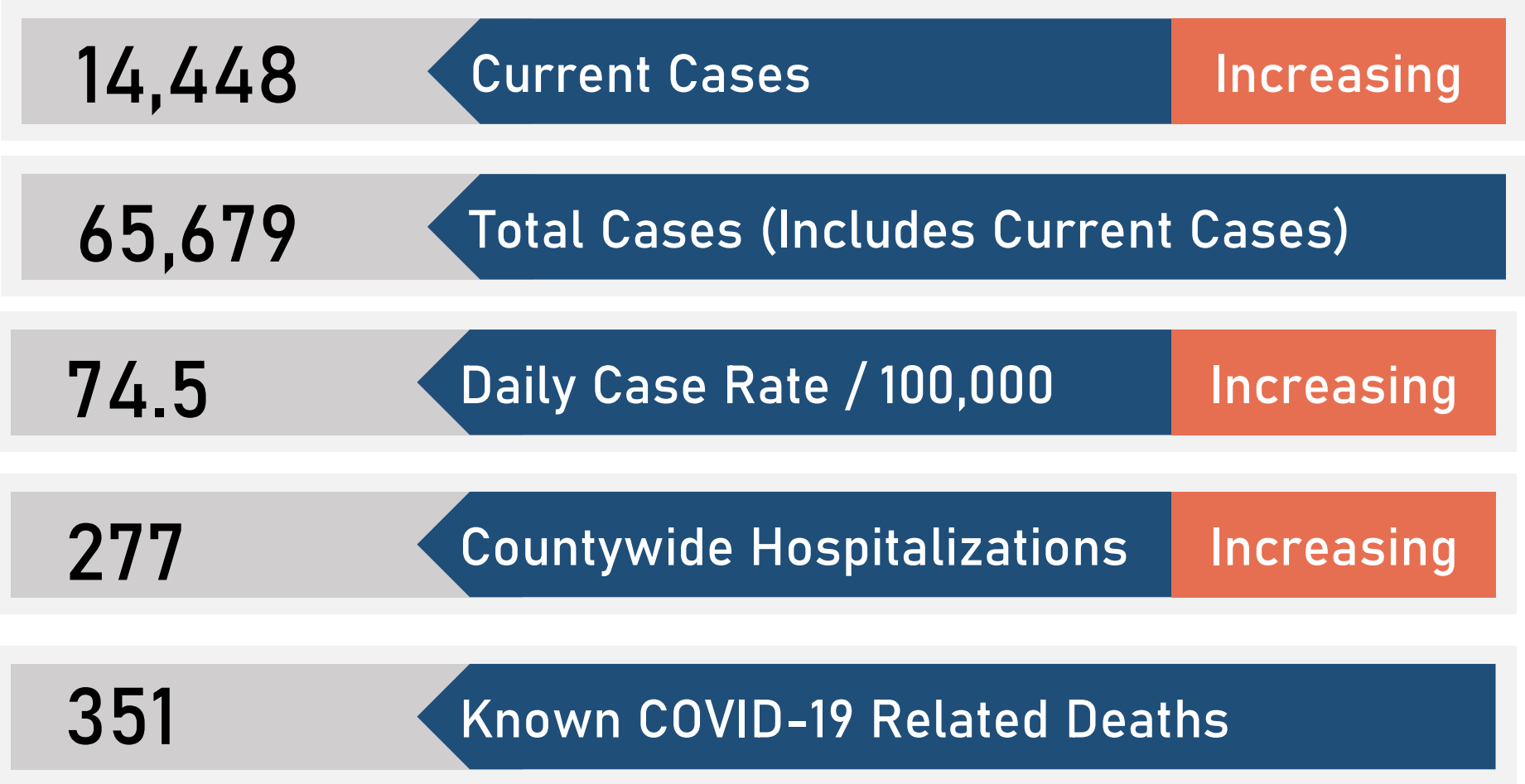
November 17, 2020

David Schuld

Salt Lake County COVID-19 Response and Recovery Coordinating Officer

Key Numbers

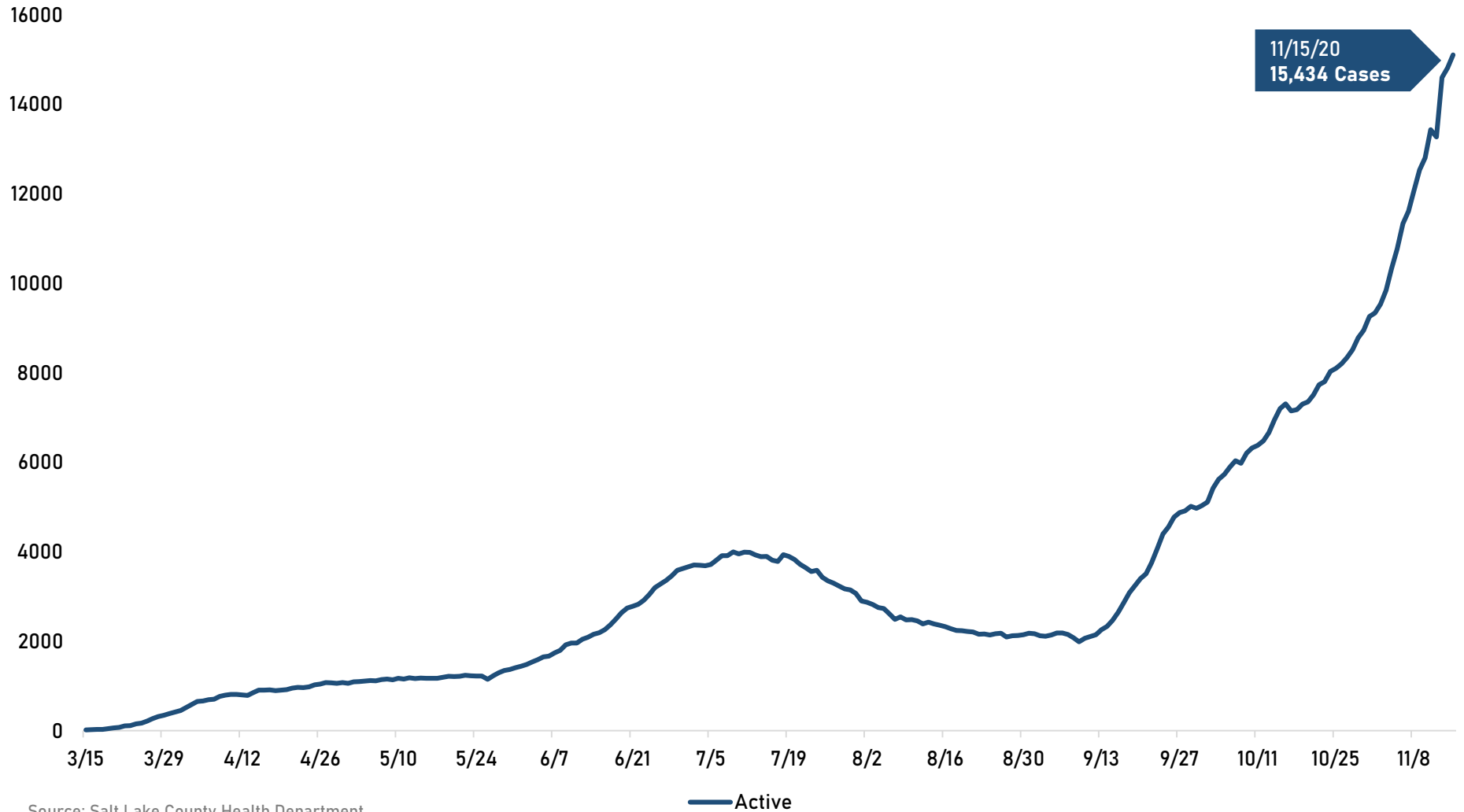
Key Numbers are for Salt Lake County only. Data presented follows best practices in reporting of epidemiology and present the number from the previous day.



Source: Salt Lake County Health Department, Utah Department of Health

Active Case Curve

The Active Case Curve articulates the summation of the number of cases of individuals in Salt Lake County whose first positive laboratory test was reported within the last 14 days.



Source: Salt Lake County Health Department

Report from Salt Lake County's COVID-19 Response and Recovery Coordinating Officer

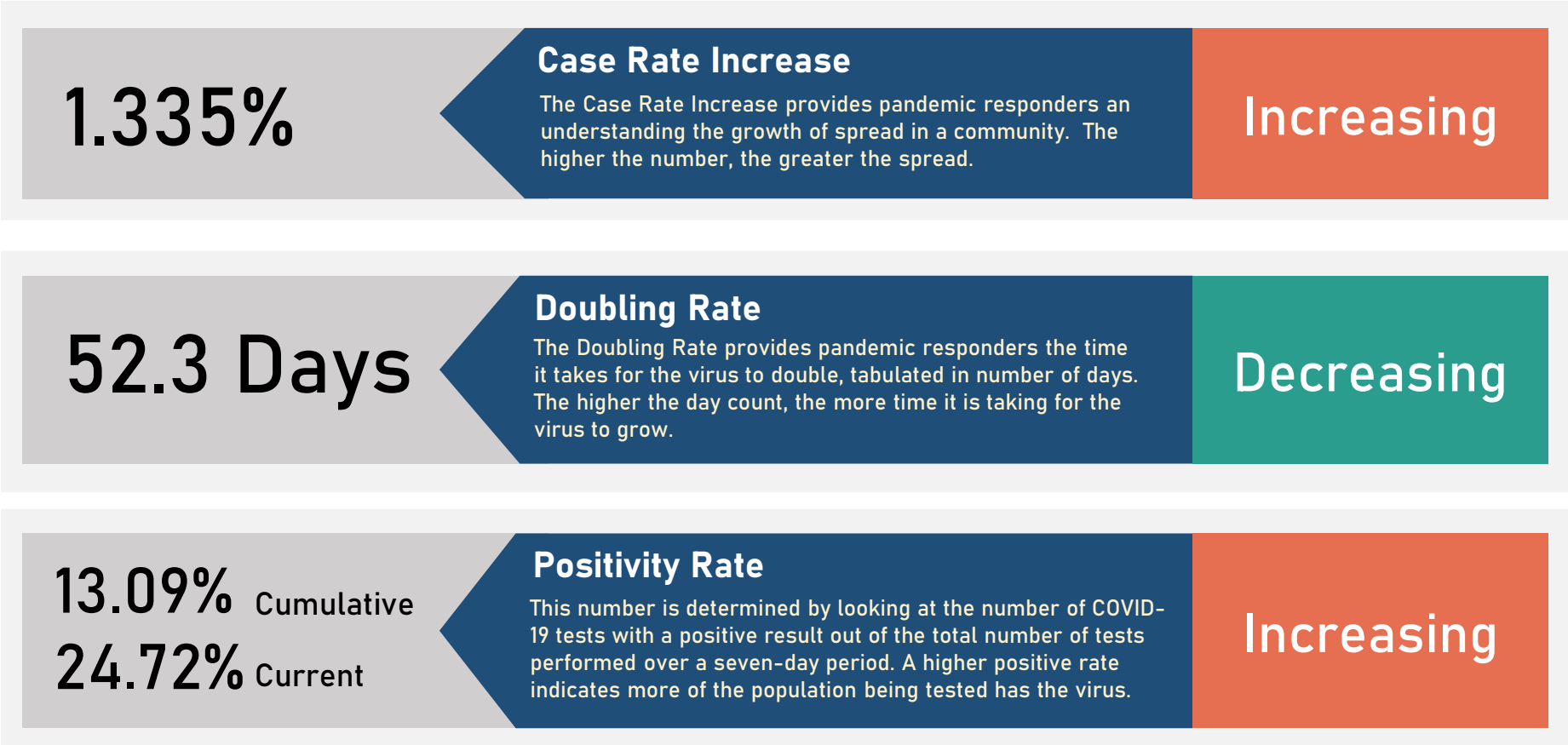


COVID-19

How and Where COVID-19 is Spreading in Salt Lake County

Infection Snapshot

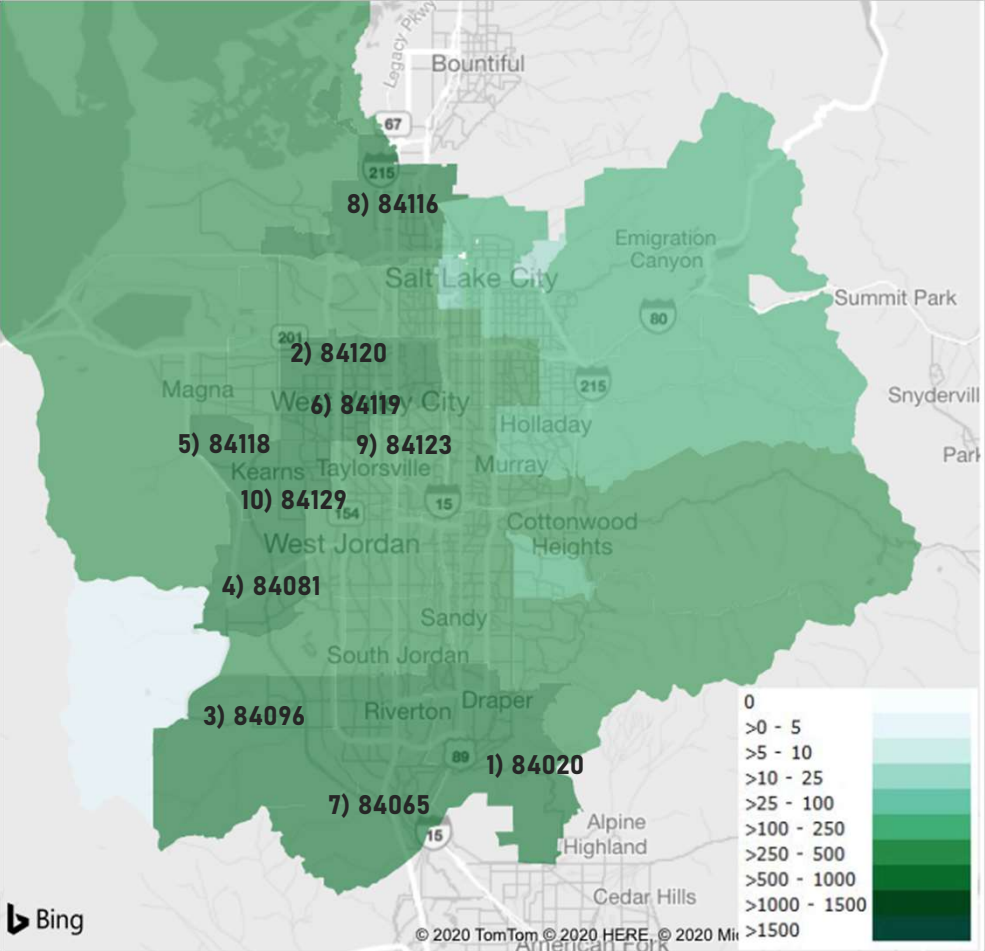
Infection Snapshot is for Salt Lake County only. Data presented follows best practices in reporting of epidemiology and present the number from the previous day.



Source: Salt Lake County Health Department

ZIP Code Surveillance

Infection Snapshot is for Salt Lake County only. Data presented follows best practices in reporting of epidemiology and present the number from the previous day.



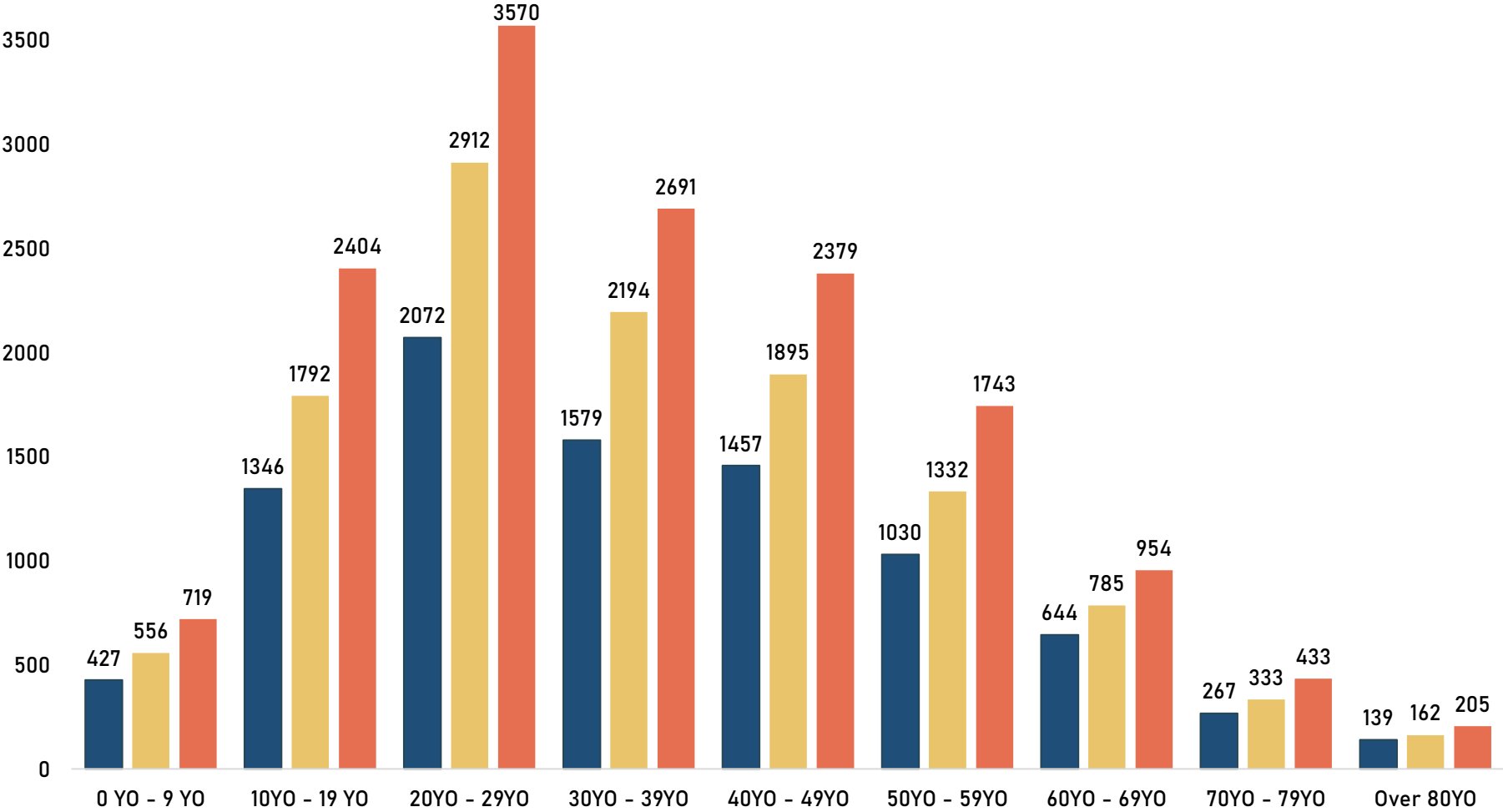
| Rank | ZIP Code | 15-Nov |
|------|----------|--------|
| 1 | 84020 | 999 |
| 2 | 84120 | 836 |
| 3 | 84096 | 786 |
| 4 | 84081 | 724 |
| 5 | 84118 | 690 |
| 6 | 84119 | 670 |
| 7 | 84065 | 623 |
| 8 | 84116 | 558 |
| 9 | 84123 | 524 |
| 10 | 84129 | 513 |

| Rank | ZIP Code | 8-Nov |
|------|----------|-------|
| 1 | 80420 | 762 |
| 2 | 84120 | 656 |
| 3 | 84081 | 596 |
| 4 | 84119 | 575 |
| 5 | 84096 | 572 |
| 6 | 84118 | 568 |
| 7 | 84116 | 500 |
| 8 | 84065 | 464 |
| 9 | 84123 | 441 |
| 10 | 84129 | 436 |

Source: Salt Lake County Health Department

Current Cases by Age Distribution

Infection Snapshot is for Salt Lake County only. Data presented follows best practices in reporting of epidemiology and present the number from the previous day.



Source: Salt Lake County Health Department

■ 11/2/2020 ■ 11/8/2020 ■ 11/15/2020

Race and Ethnicity Analysis

Race and Ethnicity Analysis is for Salt Lake County only. Data presented is current cases only (positive tests within the last 14 days).

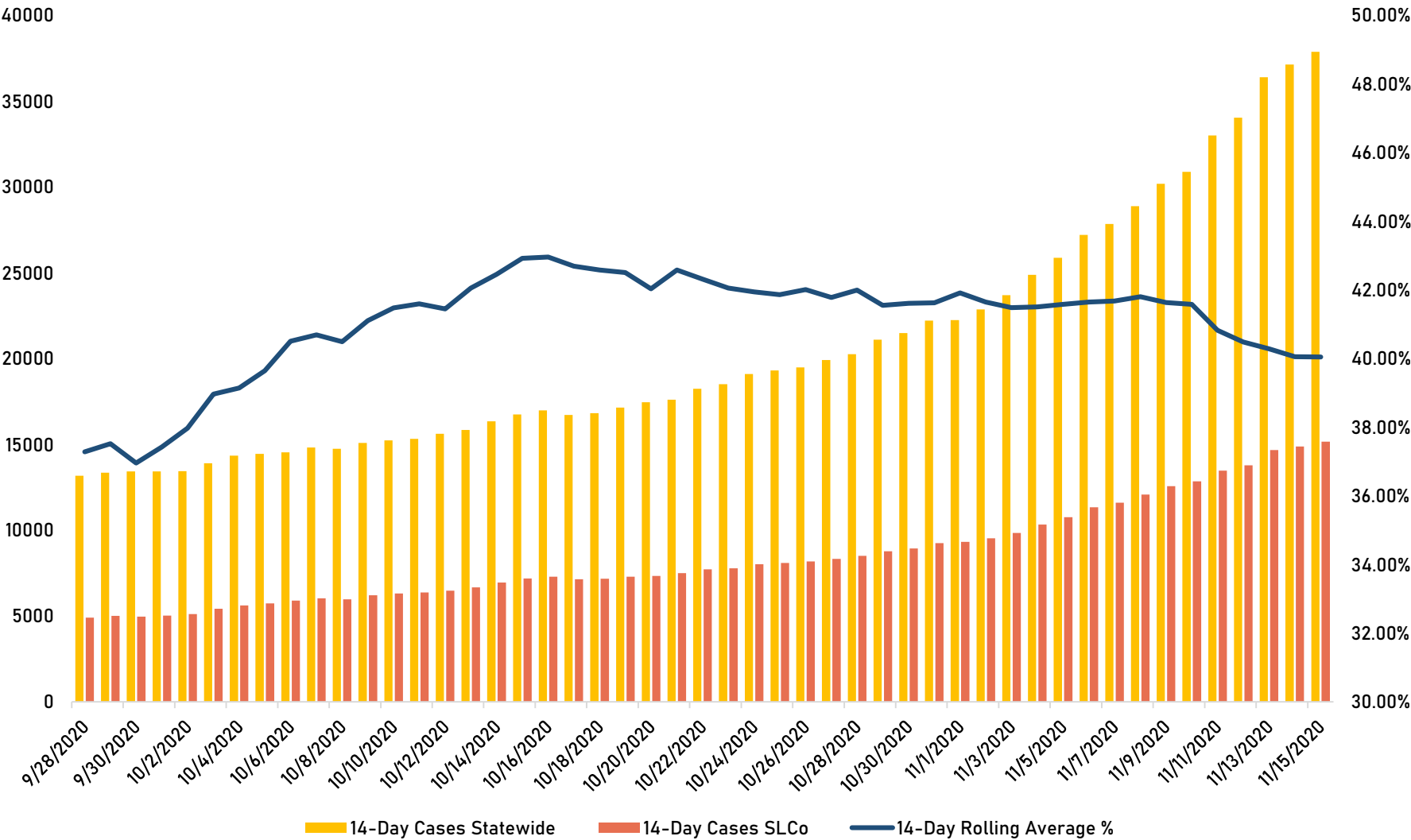
| Race | % Total County Population | Case Count | % of County Cases | Hospitalizations | % of Hospitalizations | Deaths |
|---|---------------------------|------------|-------------------|------------------|-----------------------|--------|
| American Indian of Alaska Native | 1.38% | 144 | 0.95% | 3 | 1.00% | 0 |
| Asian | 4.68% | 427 | 2.83% | 11 | 3.67% | 0 |
| Black or African American | 2.17% | 229 | 1.52% | 9 | 3.00% | 0 |
| Native Hawaiian or Other Pacific Islander | 1.77% | 533 | 3.53% | 33 | 11.00% | 1 |
| Two or More Races | 2.91% | 44 | 0.29% | 1 | 0.33% | 0 |
| Unspecified Race | | 3,901 | 25.84% | 37 | 12.33% | 1 |
| White | 88.13% | 9,821 | 65.04% | 206 | 68.67% | 6 |

| Ethnicity | % Total County Population | Case Count | % of County Cases | Hospitalizations | % of Hospitalizations | Deaths |
|------------------------|---------------------------|------------|-------------------|------------------|-----------------------|--------|
| Hispanic or Latino | 18.14% | 4,104 | 27.22% | 83 | 27.76% | 3 |
| Not Hispanic or Latino | 79.99% | 8,812 | 58.44% | 211 | 70.57% | 5 |
| Unspecified Ethnicity | | 2,162 | 14.34% | 5 | 1.67% | 0 |

Source: Salt Lake County Health Department

Report from Salt Lake County's COVID-19 Response and Recovery Coordinating Officer

Rolling 14-Day Statewide and Salt Lake County Case Totals with Statewide Percentage of Cases for Salt Lake County



Source: State of Utah Public Dashboard

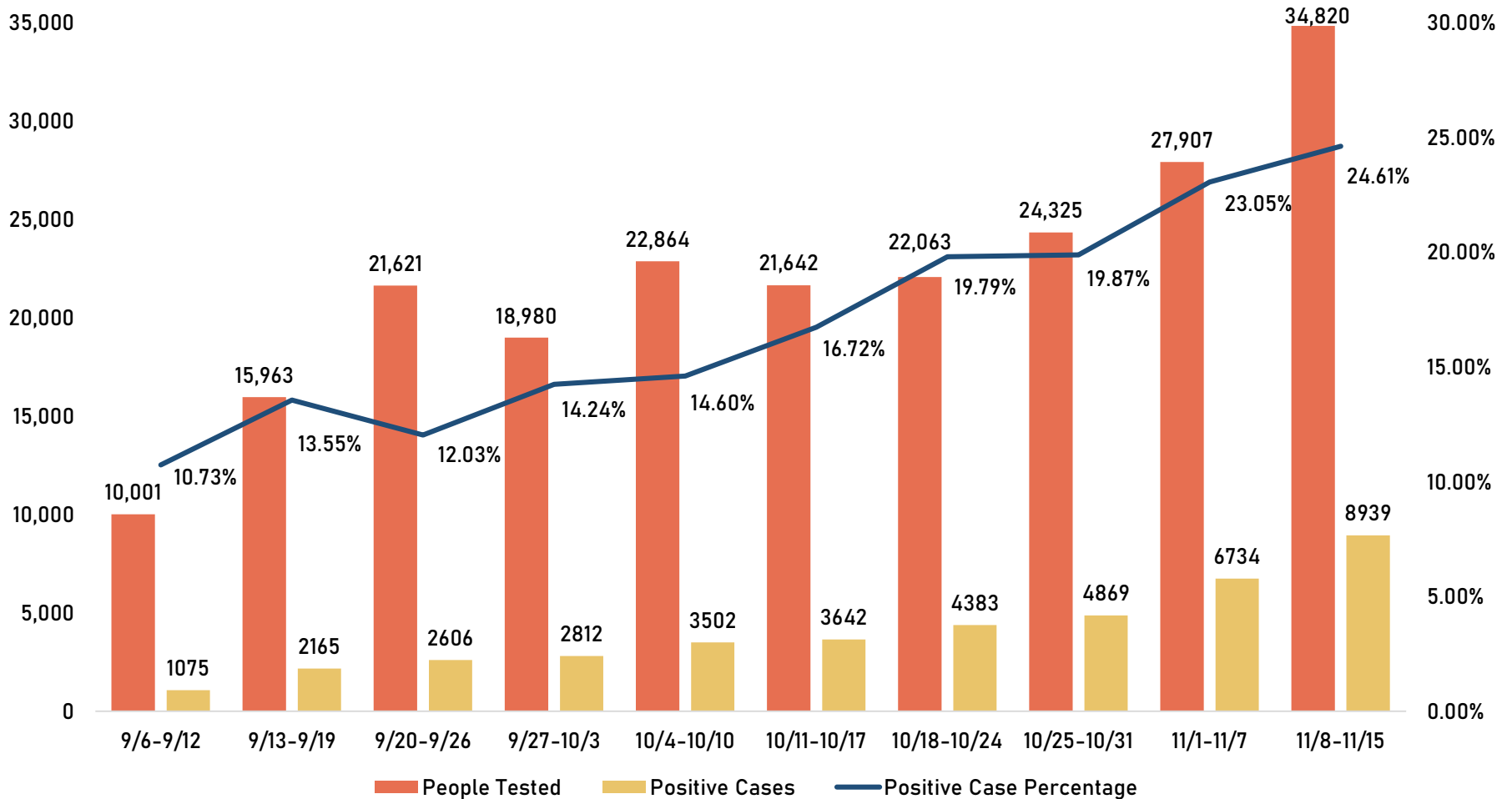




Key Health Response Indicators

Testing Analysis

Testing Analysis provides a week-over-week visualization of the number of people tested, number of positive cases, and positive test percentage. Numbers will fluctuate week over week as late reporting is entered into the database.

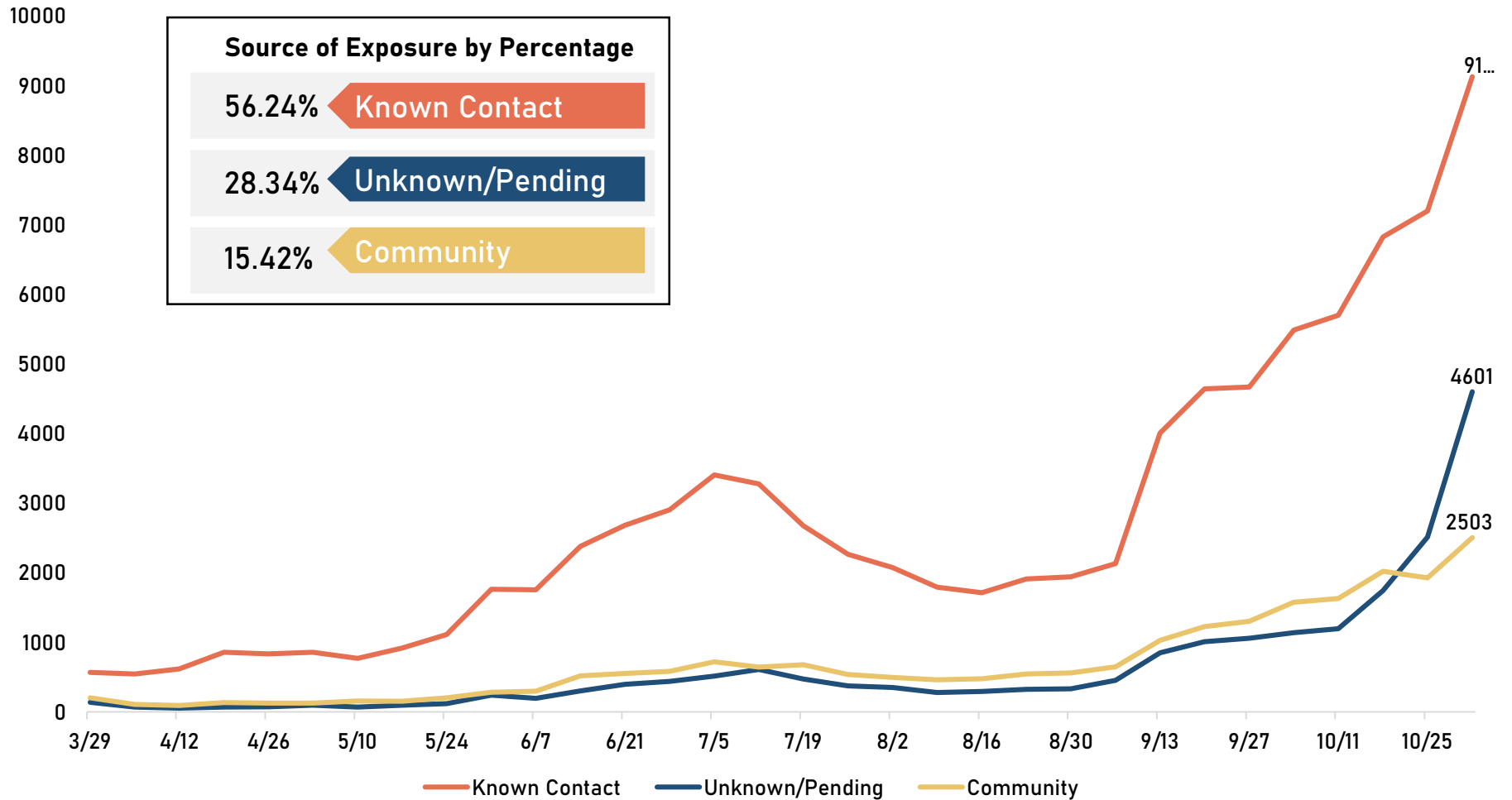


Source: Salt Lake County Health Department

Report from Salt Lake County's COVID-19 Response and Recovery Coordinating Officer

Known vs Community Cases

Provides information on the source of exposure for positive cases that have undergone tracing investigations. Number of cases identified across state. Cases with known contact vs community are identified by week.

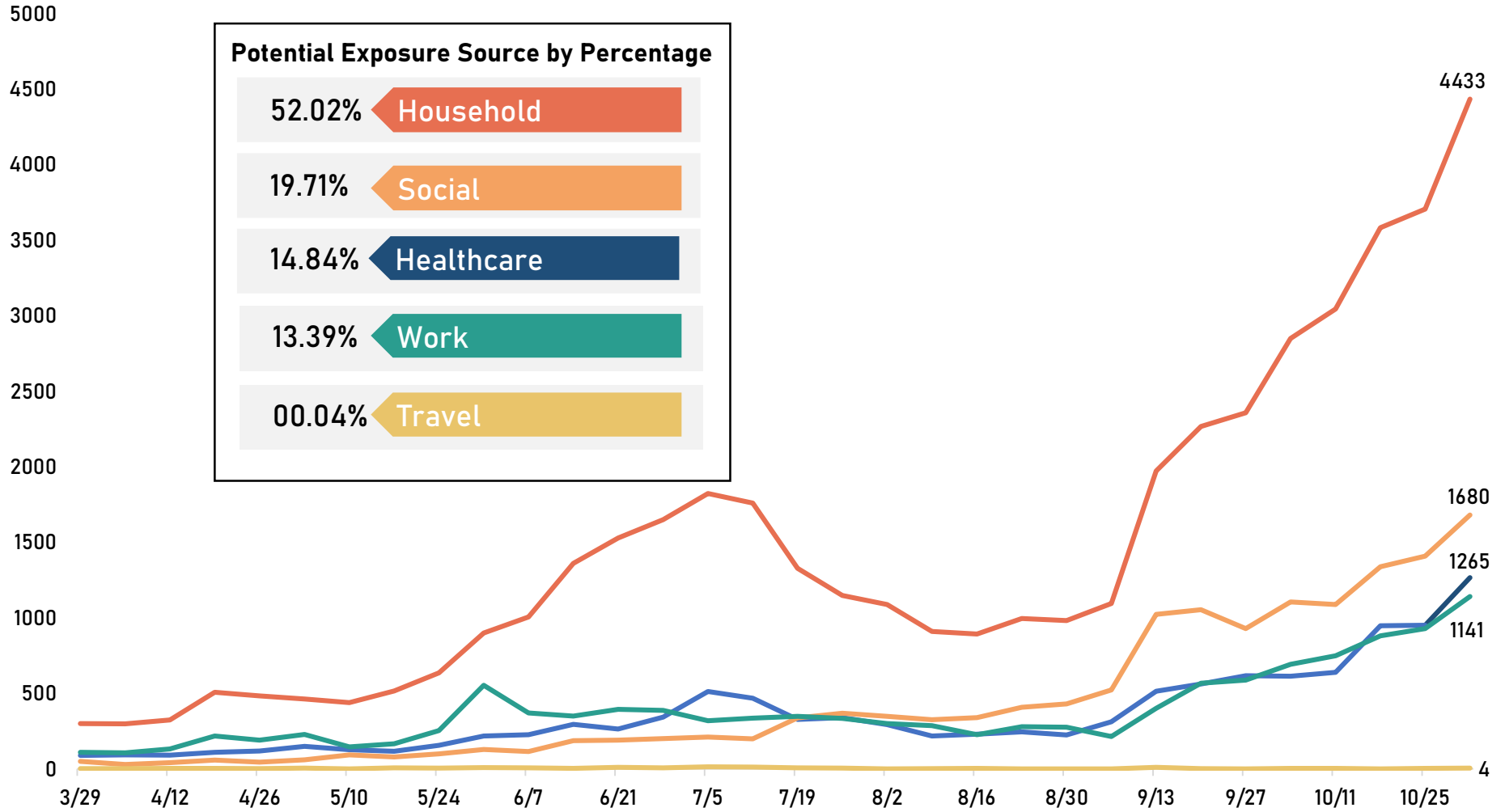


Source: State of Utah

Report from Salt Lake County's COVID-19 Response and Recovery Coordinating Officer

Potential Exposure Source

Potential exposure source as found out in tracing investigations are broken down in five areas: 1) Household, 2) Social, 3) Travel, 4) Work, and 5) Healthcare. Number of cases identified across state. Cases are identified by week.

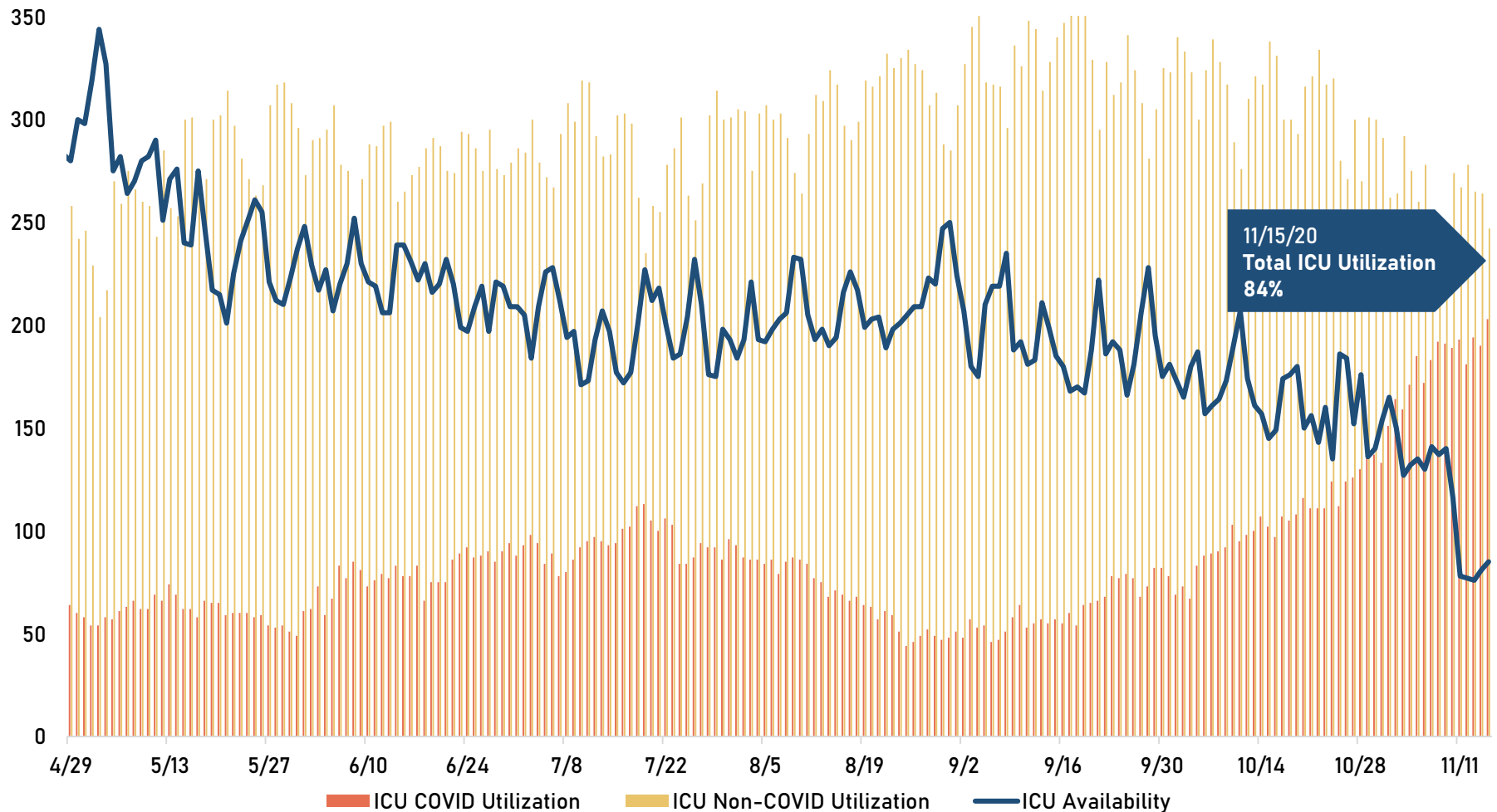


Source: State of Utah

Report from Salt Lake County's COVID-19 Response and Recovery Coordinating Officer

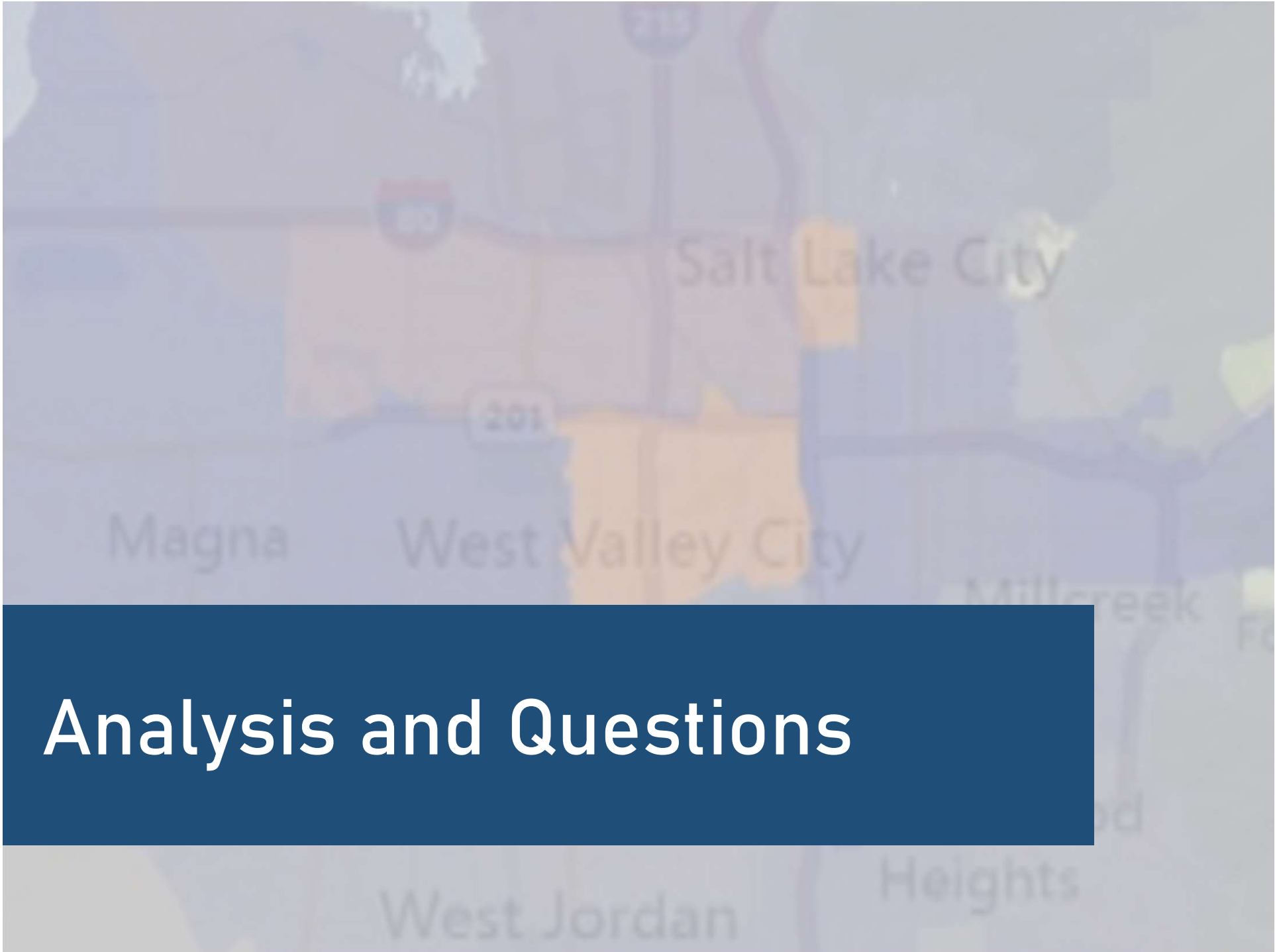
ICU Utilization

Provides information on ICU COVID utilization, ICU Non-COVID Utilization, and the remaining available ICU bed capacity statewide. ICU utilization is identified daily.



Source: State of Utah.

Report from Salt Lake County's COVID-19 Response and Recovery Coordinating Officer



Analysis and Questions