

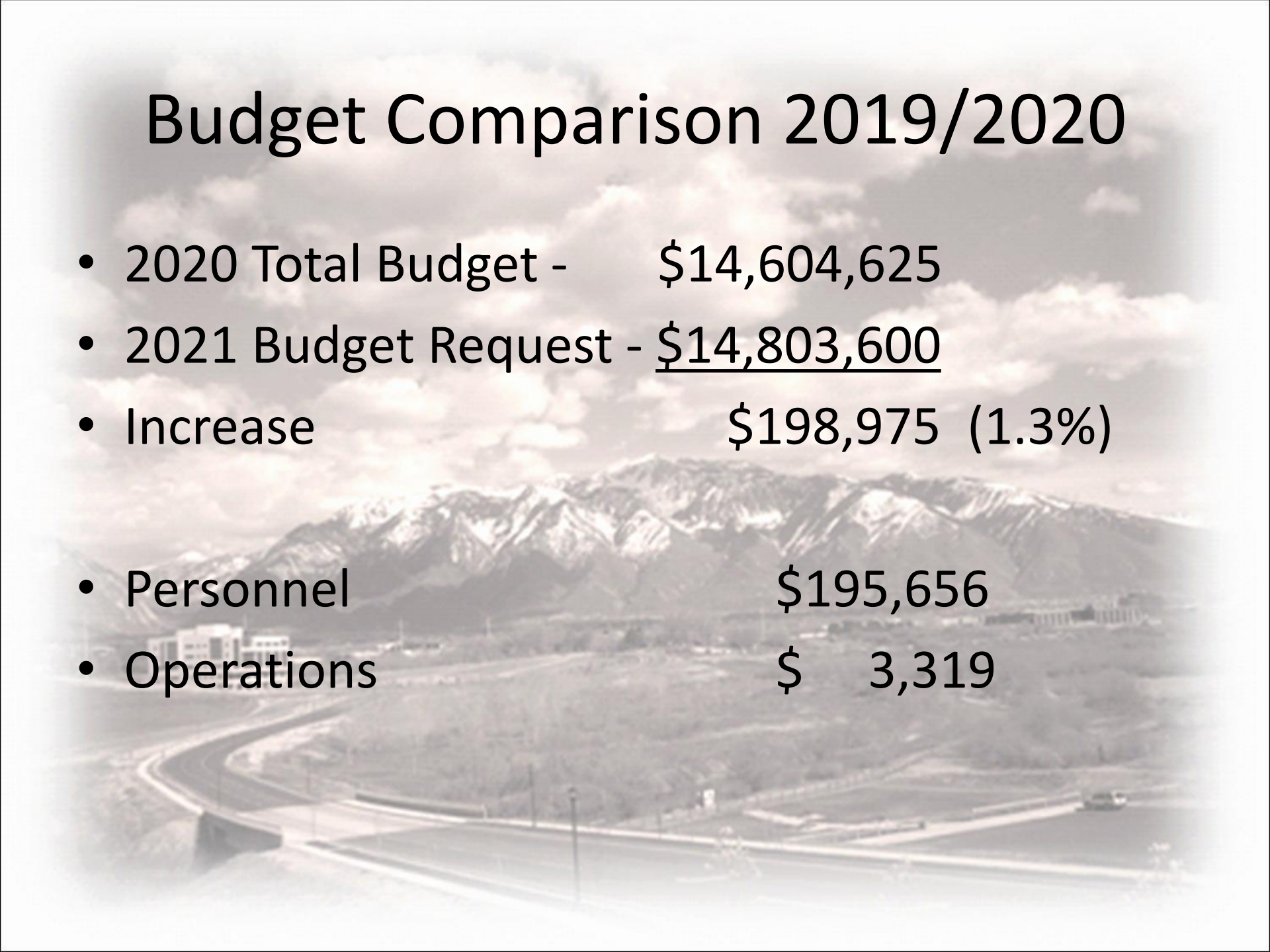


*Assessor's
Office
Budget 2021*

Budget Comparison 2019/2020

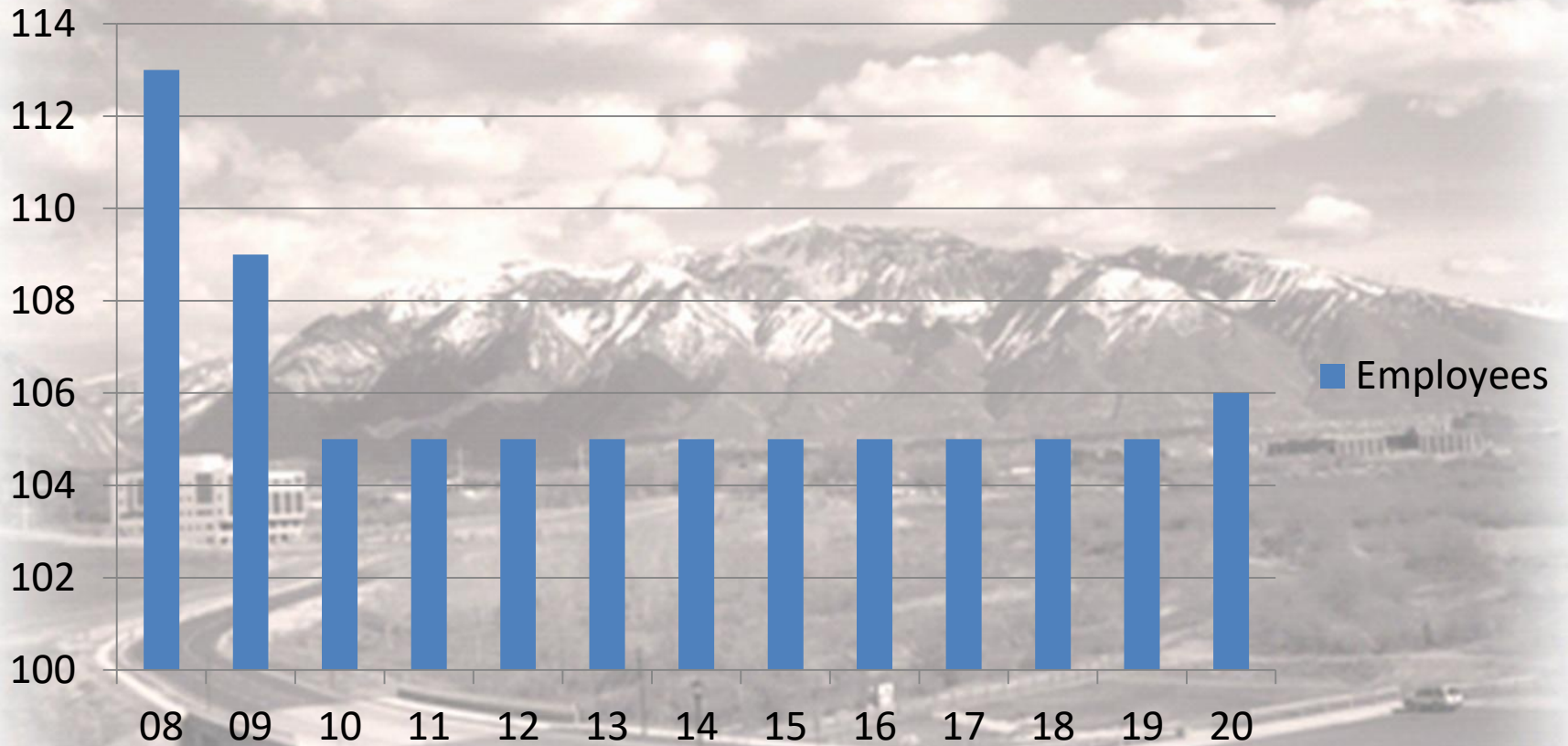
- 2020 Total Budget - \$14,604,625
- 2021 Budget Request - \$14,803,600
- Increase \$198,975 (1.3%)

- Personnel \$195,656
- Operations \$ 3,319



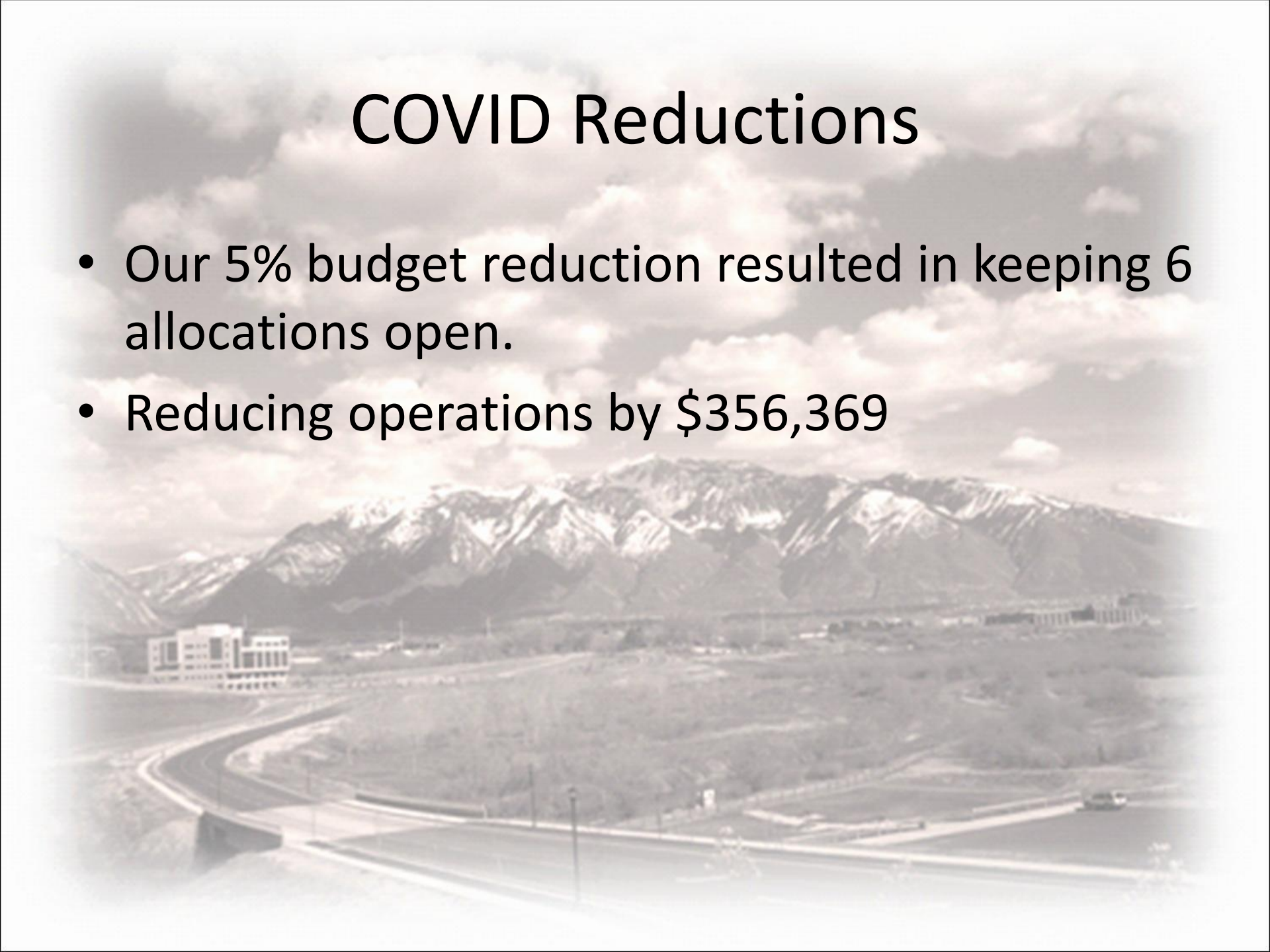
FTE History

Employees



COVID Reductions

- Our 5% budget reduction resulted in keeping 6 allocations open.
- Reducing operations by \$356,369



Commercial Division

- Four of the six empty allocations came from our Commercial Division due to turnover
- In 2019 through 2020, we've lost 50% of our commercial appraisers
- Commercial appraising is more difficult and it takes longer to get new appraisers to the working level
- Working with HR to increase grade
- Timing on authorizing filling vacancies

PUMA Development

- On schedule for go-live in 2021
- We have a strong working relationship with the MCAT development team
 - Commercial income and condo modules are being designed and prototyped by our team
 - 99.2% of our data has been converted and can be replicated as needed

Questions?

THANK YOU!!!

- You have been a great group to work with !
- I appreciate all the help and support you've given me and the Assessor's Office!
- You've been outstanding!!

