

# RE-ESTABLISHED LAW ENFORCEMENT BUREAU

PROPOSED BUDGET AND ORG CHART



SALT LAKE COUNTY SHERIFF'S OFFICE  
SHERIFF ROSIE RIVERA

*CELEBRATING 175 YEARS OF SERVICE 1849 – 2024*



# LEB BUDGET HIGHLIGHTS

- 10.21 increase in personnel from current CW funded at UPD
- Minimum staffing to provide coverage and maintain officer safety
- All equipment is fully costed with replacement costs
- Sworn salaries are calculated at the 75<sup>th</sup> percentile
- All units and divisions in the org chart are either:
  - Statutory duties of the Sheriff
  - Have a demonstrated countywide benefit
  - Necessary for a deputy to perform statutory or CW duties

LEB FTE Summary	
Total FT Civilian	43
Total Sworn	85
Chief Deputy	1
Deputy Chief	1
Captains	3
Lieutenants	4
Sergeants	13
Deputies	63



# LEB BUDGET REQUEST DETAIL

- The 2024 request is for \$4.4M one-time
- Future year adjustment (2025) -\$3.5M
- Annualized increase of \$838,496
- 2024 Budget Request Detail
  - This is seed money to begin operations on July 1
  - Contra placed on personnel
  - Includes \$3.64M in operational costs
    - Half will be for 6 months of operational needs
    - Half for one-time expenses - these expenses will not be known until negotiations with UPD for assets are complete

LEB Annual Budget Summary	
Salary & Benefits	19,643,424
Operation Expense	3,640,518
Capital Expenditures	72,080
<b>Total Cost for Service</b>	<b>23,356,022</b>
LEB Costs Absorbed in CY24 Budget	(1,198,289)
<b>Total Request</b>	<b>22,157,733</b>
Unincorporated County (SLVLESA) Costs	(4,400,000)
Anticipated Outside Revenues	(1,390,000)
Current UPD Contract	(15,529,237)
<b>Additional General Fund Need</b>	<b>838,496</b>

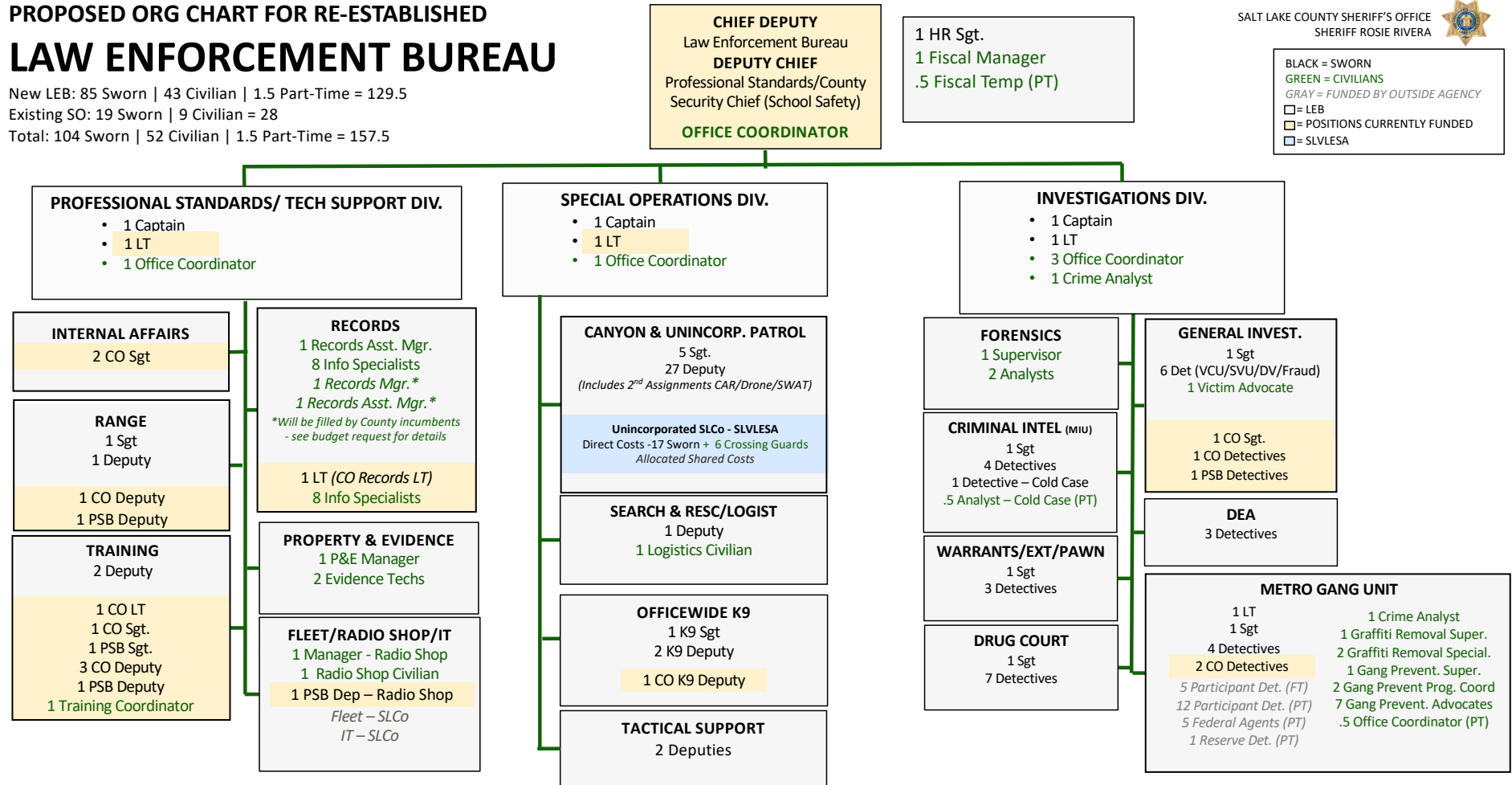
# PROPOSED ORG CHART FOR RE-ESTABLISHED LAW ENFORCEMENT BUREAU

New LEB: 85 Sworn | 43 Civilian | 1.5 Part-Time = 129.5  
 Existing SO: 19 Sworn | 9 Civilian = 28  
 Total: 104 Sworn | 52 Civilian | 1.5 Part-Time = 157.5

SALT LAKE COUNTY SHERIFF'S OFFICE  
 SHERIFF ROSIE RIVERA



BLACK = SWORN  
 GREEN = CIVILIANS  
 GRAY = FUNDED BY OUTSIDE AGENCY  
 □ = LEB  
 □ = POSITIONS CURRENTLY FUNDED  
 □ = SLVLESA



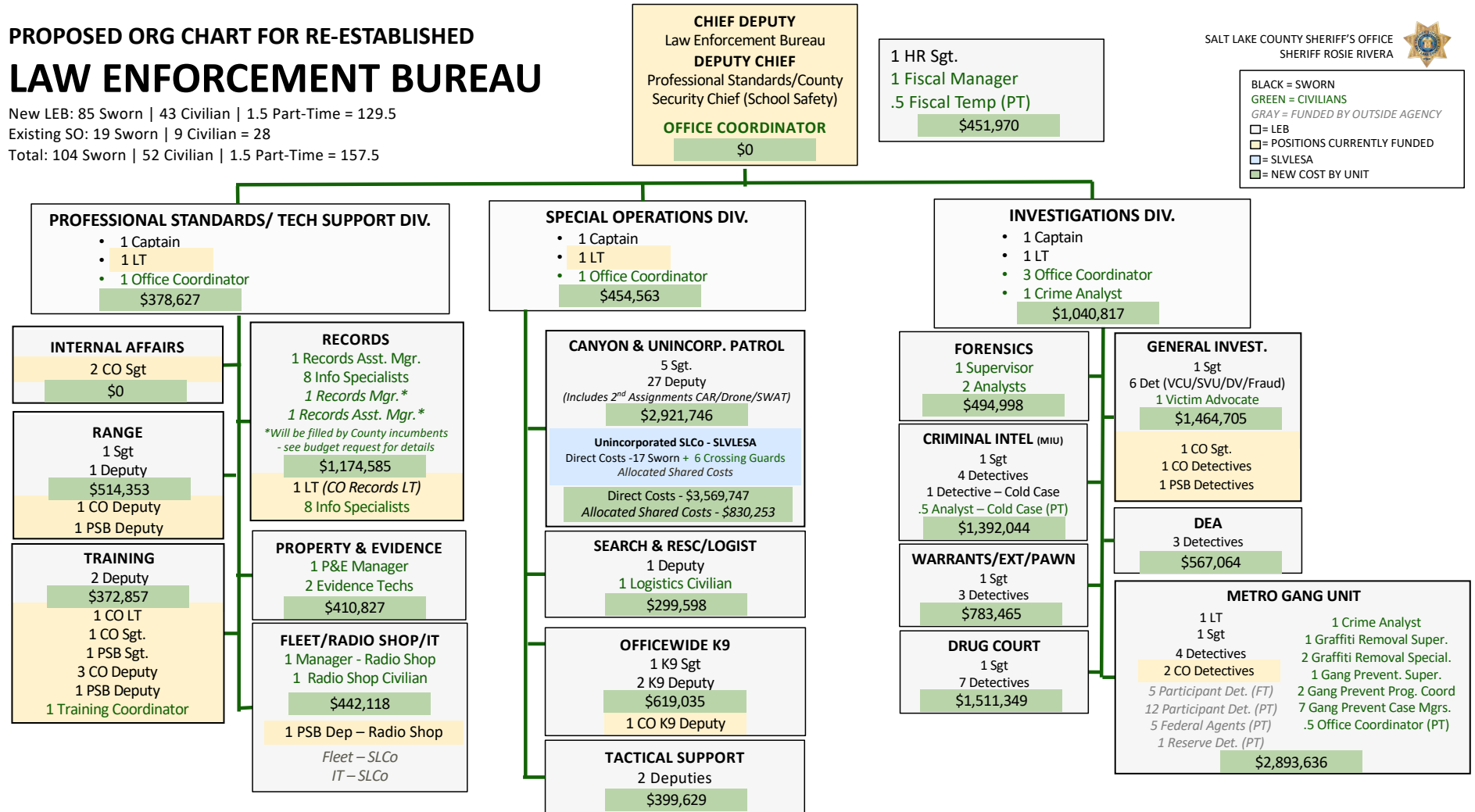
# PROPOSED ORG CHART FOR RE-ESTABLISHED LAW ENFORCEMENT BUREAU

New LEB: 85 Sworn | 43 Civilian | 1.5 Part-Time = 129.5  
 Existing SO: 19 Sworn | 9 Civilian = 28  
 Total: 104 Sworn | 52 Civilian | 1.5 Part-Time = 157.5

SALT LAKE COUNTY SHERIFF'S OFFICE  
 SHERIFF ROSIE RIVERA



BLACK = SWORN  
 GREEN = CIVILIANS  
 GRAY = FUNDED BY OUTSIDE AGENCY  
 □ = LEB  
 □ = POSITIONS CURRENTLY FUNDED  
 □ = SLVLESA  
 □ = NEW COST BY UNIT





**THANK YOU**