



Overview of *Surveyor's Office* 2023 Budget

Presented October 25, 2022

INTRODUCTION

Salt Lake County Surveyor's Office provides numerous statutory and professional services to the County and public. Additionally, a priority is placed on promoting efficient use of the office as a Countywide resource. The Surveyor's Office utilizes specialized technological infrastructure and a number of shared Countywide IT resources to provide services.

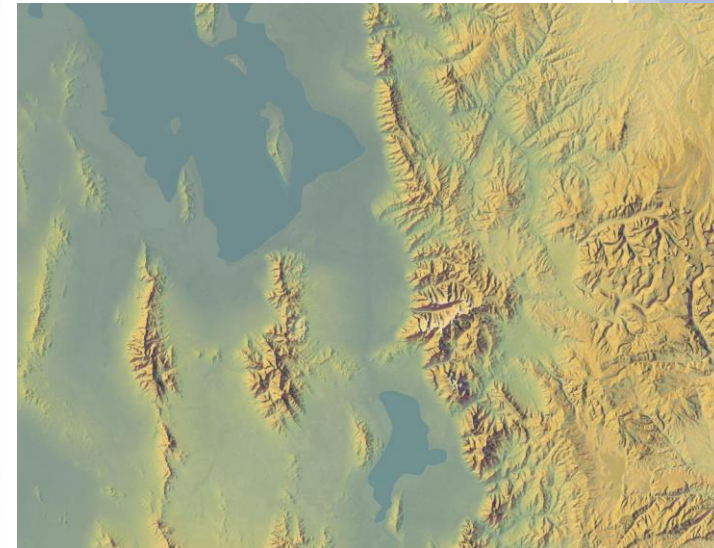
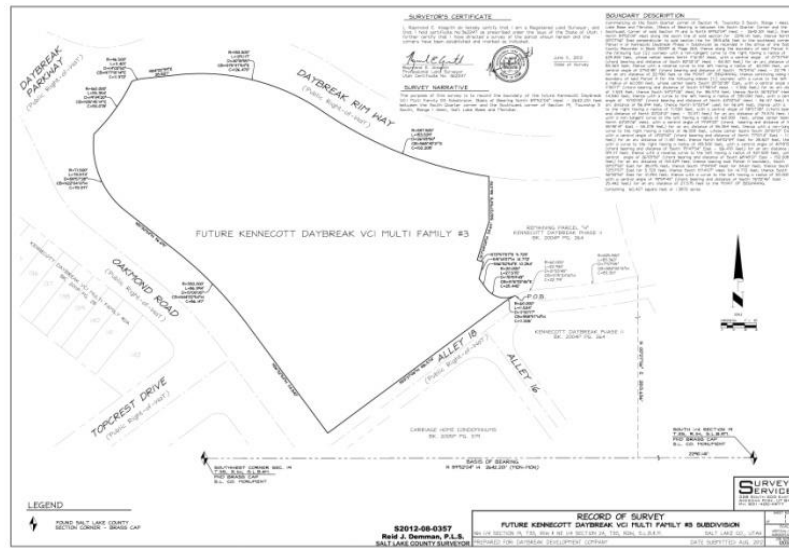
2023 Proposed Requested Budget - \$4,099,000

Surveyor's budget is funded by both the Tax and General Fund, 18% and 82% respectively.

- ▶ Categorical breakdown of the Surveyor's budget is:
 - ▶ 84% Personnel
 - ▶ 10% Operations
 - ▶ 6% Indirect Costs

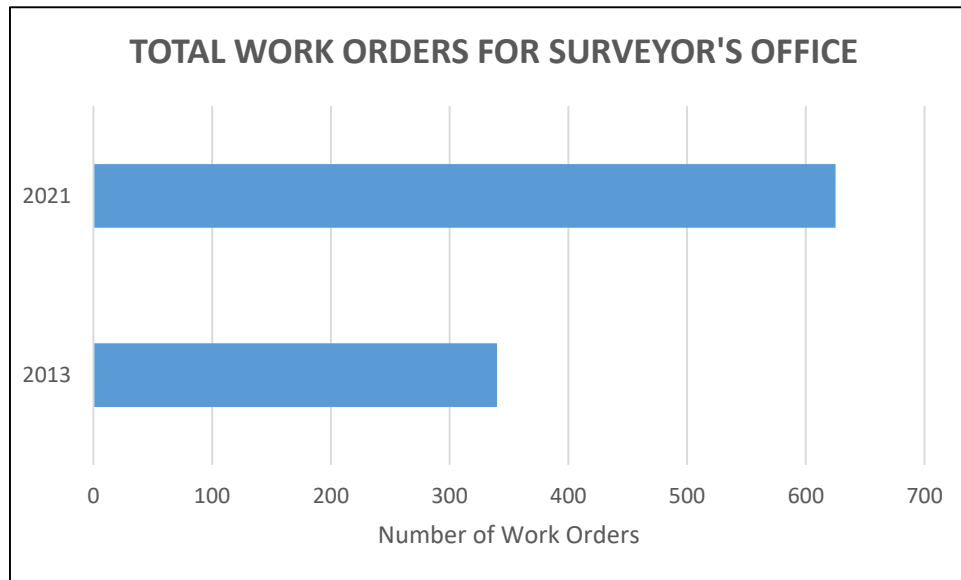
PRIMARY STATUTORY FUNCTIONS

- ▶ Maintain Public Land Survey System (PLSS)
- ▶ Perform or arrange for all survey work for the County
- ▶ Review, maintain and make available to the public all private survey records
- ▶ Provide maps to County offices



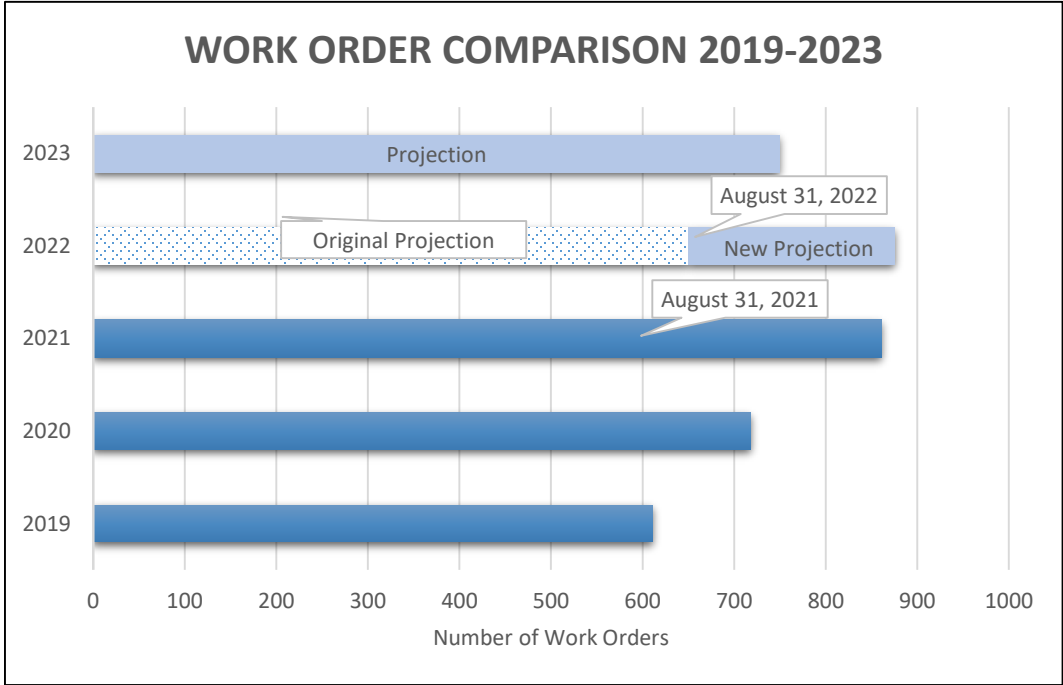
PERFORMANCE MEASUREMENT 2013-2021

- ▶ A key performance measure is the number of work order requests from both the public and government entities. Since year ending 2013 through 2021, the Surveyor's Office has averaged 625 work order requests per year, which reflects an 84% increased use of Surveyor's resources.



2023 WORKLOAD PROJECTIONS

2021 work requests increased 20% above 2020's total. As of September 2022, work requests are 10% above the September 2021 total and have exceeded our 2022 projection. We are estimating 2022 work request numbers will remain consistent with year end 2021 due to high demand on resources during the Fall construction season***. Based on continuing strong construction and development trends, in addition to workload associated with recent changes to State Code and County Ordinance, demand on resources and work requests are anticipated to remain consistent with 2021 and 2022.



***The Fall months typically realize large increases in workload due to the construction industry push to complete projects prior to winter.



2022 COLLABORATIVE PROJECTS OF INTEREST

Community Services

- ▶ Redwood Nature Area Topo w/Drone Flight
- ▶ Butterfield Canyon Drone Flight
- ▶ Mountain View Golf Course Topo w/Drone Flight
- ▶ Parleys Trail Construction Drone Flight
- ▶ Millcreek City Center Drone Flight
- ▶ Survey123 Sign Collection
- ▶ New Tracy Aviary Expansion Topography & Boundary Survey
- ▶ Jordan River Bridge and Trail Project
- ▶ Topographies: Constitution Park, Hunter Park, Harmony Park, David Gourley Park, Murray Park Sports Fields, Big Cottonwood Regional Park Playground
- ▶ Badger Cove boundary survey and subdivision plat
- ▶ Easement preparation of four portage sites along the Jordan River
- ▶ South Jordan Equestrian Park – Olympia Development subdivision and land exchange
- ▶ Redwood Recreation Center field survey w/building details

- ▶ Library Services Creation and Maps
 - ▶ Map Locations and Patron Usage
 - ▶ Drone Video Tours and Photos of County Libraries
- ▶ Tourism, Recreation, Culture & Convention (TRCC) Maps

Human Services

- ▶ Criminal Justice Services HUB site
- ▶ Crime Mapping
- ▶ County Facilities Interactive Map
- ▶ Noxious Weed Collector App
- ▶ Kearns Senior Citizen Center boundary and topography survey

Administrative Services

- ▶ Preparation of Easement Description & Exhibit for Real Estate projects

Office of Regional Development

- ▶ Access to Opportunity Mapping Tool
- ▶ Public Asset Mapping Assistance
- ▶ HB 440 Homeless Shelter Location Interactive Map
- ▶ Homeless Point in Time (PIT) Count, Survey123 and Mapping Support

2022 COLLABORATIVE PROJECTS OF INTEREST (continued)

Public Works

- ▶ Stockpile Volumes Drone Flights
- ▶ Jordan River Surplus Canal Property Collection and Staking
- ▶ Midvale Public Works Master Plan boundary and topography survey
- ▶ Preparation and/or review of survey control sheets for Engineering/Flood Control projects
- ▶ Research canal and creek rights of way encroachments
- ▶ Preparation and/or review of utility and construction easements
- ▶ Prepared documents to adjust rights of way in Camp Kearns
- ▶ Ownership and Encumbrance Exhibit for Solid Waste Landfill
- ▶ 9130 West Roadway Topography
- ▶ NW Avenue Safety Sidewalk at 5400 South
- ▶ Redhaven Drive Road Design

2022 COLLABORATIVE PROJECTS OF INTEREST (continued)

Elected Officials

- ▶ Broadband Mapping Assistance
- ▶ Mayor's Demographics Maps and Reports
- ▶ Assessor's Office Collaboration to Map Greenbelt Parcels
- ▶ Aerial Project
- ▶ Aerial Project Distribution
- ▶ Annexation Descriptions and Maps
- ▶ Foothill Canyon Overlay Zone (FCOZ) Maps
- ▶ Recorder's Office Subdivision Plat Checking
- ▶ Preparation of documents to convey county neighborhood parks to cities and townships for District Attorney
- ▶ Bingham Park Conveyance for District Attorney
- ▶ Parley's Canyon Mining Claim Exhibits for District Attorney
- ▶ Prepared Final Local Entity Plats

Other Entities

- ▶ Millcreek Reviewed and Approved Subdivision Plats
- ▶ MSD Reviewed and Approved Subdivision Plats; Reviewed Conditional Use Permits
- ▶ UFA Mapping Support

2022-2023 CHALLENGES

- ▶ Managing increased field and office workload due to growth in population, development, and construction with status quo personnel resources.
 - ▶ The County Surveyor's Office has 12 field crew FTEs to perform maintenance on the countywide Public Land Survey System (PLSS) and all field survey work for Salt Lake County projects. Additionally, field crews track construction and maintain/protect the PLSS on UDOT and municipal (23 municipalities) projects.
 - ▶ The County Surveyor's Office has 10 FTEs to manage office operations, statutory requirements (GIS mapping, permitting, County project management, etc.), and other collaborative services to County offices and the public.
- ▶ The Surveying / Engineering job market continues to be highly competitive. Salary surveys reflect wages have steadily increased due to demand.
- ▶ There continues to be a shortage of skilled technicians and professionals. This causes wages to rise, adding to the difficulties related to recruiting and retention of employees.

BUDGETING

2023 Projected Budgeting Consideration

- ▶ Proposed Budget Requests include:
 - ▶ \$13K for Computer upgrades and supplies
 - ▶ \$16K due to rate increases/inflation
 - ▶ \$3,500 for Professional Fees
 - ▶ \$225 cell phone stipend
 - ▶ TOTAL REQUESTS: \$32,725

2023 Proposed Requested Budget - \$4,099,000



