



# Overview of *Surveyor's Office* 2025 Budget

Presented November 26, 2024

# INTRODUCTION

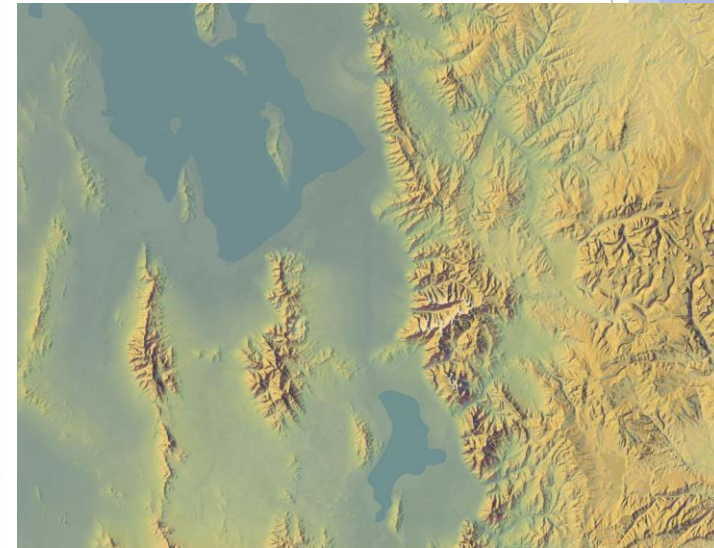
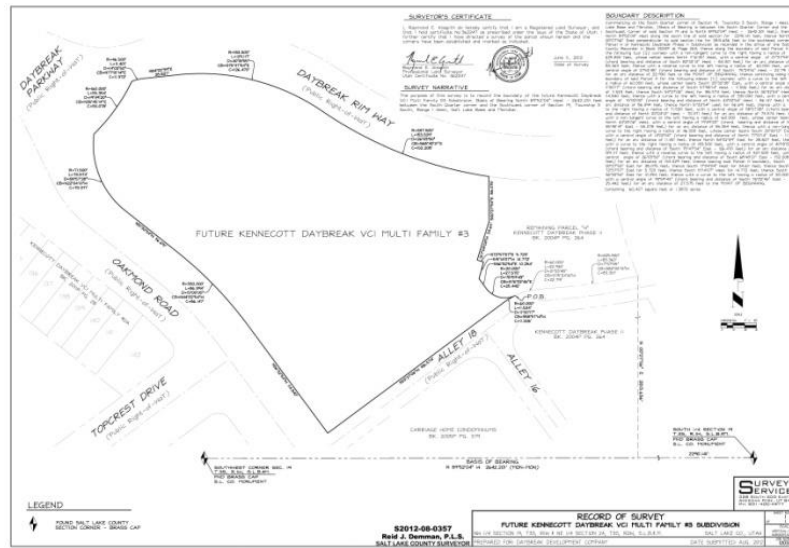
Salt Lake County Surveyor's Office provides numerous statutory and professional services to the County and public. Additionally, a priority is placed on promoting efficient use of the office as a Countywide resource. The Surveyor's Office utilizes specialized technological infrastructure and a number of shared Countywide IT resources to provide services.

Surveyor's budget is funded by both the Tax and General Fund, 18% and 82% respectively.

- ▶ Categorical breakdown of the Surveyor's budget is:
  - ▶ 84% Personnel
  - ▶ 10% Operations
  - ▶ 6% Indirect Costs

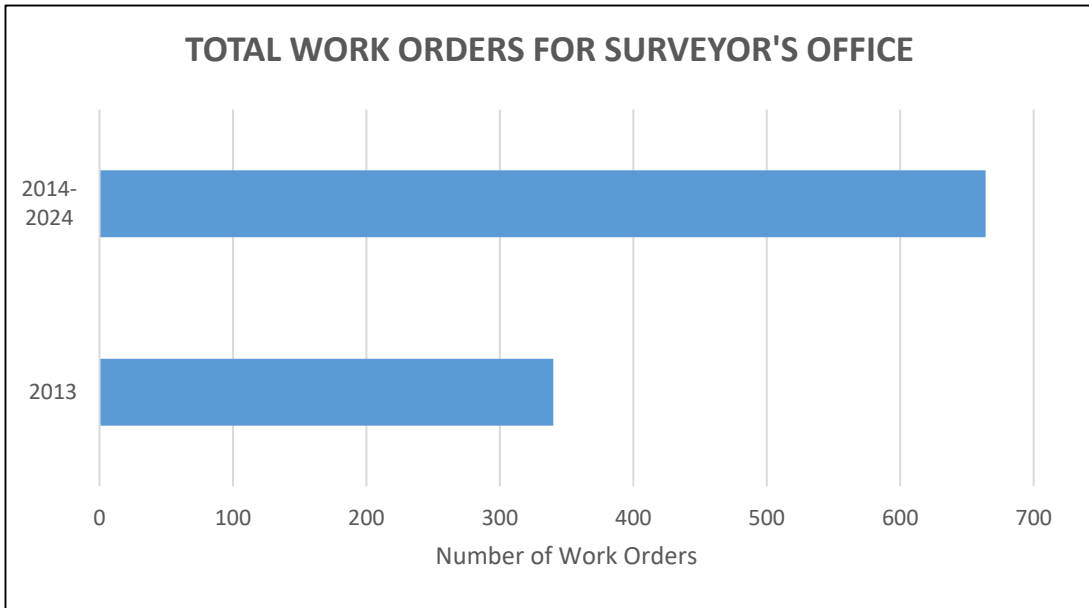
# PRIMARY STATUTORY FUNCTIONS

- ▶ Maintain Public Land Survey System (PLSS)
- ▶ Perform or arrange for all survey work for the County
- ▶ Review, maintain and make available to the public all private survey records
- ▶ Provide maps to County offices
- ▶ Issue and manage Countywide Monument Disturbance Permits



# PERFORMANCE MEASUREMENT 2013-2024

- ▶ A key performance measure is the number of work order requests from both the public and government entities. Since year ending 2013 through 2024, the Surveyor's Office has averaged 664 work order requests per year, which reflects an 95% increased use of Surveyor's resources.



# 2024 COLLABORATIVE PROJECTS OF INTEREST

## Community Services

- ▶ UT & SL Canal Corridor Cross Sections
- ▶ Northwest Recreation Center Natatorium
- ▶ Big Cottonwood Regional Park Lease Survey
- ▶ Redwood Recreation Subdivision
- ▶ Parks & Rec Master Plan Mapping Support
- ▶ Parks & Rec Tree Inventory Project
- ▶ Parks & Rec Sugar House Park Arboretum Project
- ▶ Park & Rec Valley Regional Park Imagery
- ▶ Park & Rec Creekside Park Drone Flight
- ▶ Park & Rec Wheeler Farm Drone Flight
- ▶ Park & Rec Butterfield Trailhead Drone Flight
- ▶ Parleys Trail Construction Drone Flight
- ▶ Draper Conservation Easement (Landslide) Drone Flight
- ▶ Jordan River Bridge and Trail Project
- ▶ Jordan River Boat Portage and Construction
- ▶ Park Topographies: Hunter Park, Harmony Park, David Gourley Park, Murray Park Sports Fields, Big Cottonwood Regional Park Playground

- ▶ Badger Cove boundary survey and subdivision plat
- ▶ Dimple Dell Retention Pond Volume Verification
- ▶ Library Services Creation and Maps
  - ▶ Map Locations and Patron Usage
  - ▶ Drone Video Tours and Photos of County Libraries
- ▶ Zoo, Arts and Parks (ZAP) Events Project
- ▶ TRCC Mapping
- ▶ SOARS Project

## Human Services

- ▶ Cool Zone Web Map
- ▶ Weeds & Bees Collector App
- ▶ Meals On Wheels Web Map

## Administrative Services

- ▶ Preparation of Easement Description & Exhibit for Real Estate projects
- ▶ Preparation of Conveyance Documents for County owned surplus properties
- ▶ Salt Palace and Abravanel Hall Topo
- ▶ Southwest Performing Arts Center in Daybreak
- ▶ Real Estate Property File Mapping

# 2024 COLLABORATIVE PROJECTS OF INTEREST (continued)

## Office of Regional Development

- ▶ Public Asset Mapping Assistance
- ▶ HB 440 Homeless Shelter Location Interactive Map
- ▶ Homeless Point in Time (PIT) Count, Survey123 and Mapping Support
- ▶ Public Right of Way in Northwest Quadrant
- ▶ Southwest Waterways Visioning Plan

## Public Works

- ▶ Safe Sidewalk Program
  - ▶ 8425 S 700 E in Sandy
  - ▶ 8425 S 1300 E to 1510 E in Sandy (drone)
  - ▶ 1000 E from 8600 S to 8500 S in Sandy
  - ▶ 9100 W in Magna
  - ▶ TC Kearns Elementary School Neighborhood
- ▶ Stockpile Volumes Drone Flights Topography
- ▶ Bank Stabilization
- ▶ Jordan River Surplus Canal FEMA Cross Sections
- ▶ Jordan River Surplus Canal Property Collection & Staking

- ▶ 9080 West Storm Drain Survey
- ▶ Emigration Canyon Slope Stabilization Topo
- ▶ Preparation and/or review of survey control sheets for Engineering/Flood Control projects
- ▶ Research canal and creek rights of way encroachments
- ▶ Preparation and/or review of utility and construction easements
- ▶ Prepared documents to adjust rights of way in Camp Kearns
- ▶ Kearns Elementary Traffic Calming Study
- ▶ Fleet Main Large Truck Bays

# 2024 COLLABORATIVE PROJECTS OF INTEREST (continued)

## Elected Officials

- ▶ Custom maps and aerial imagery for County Council
- ▶ Assessor's Office Collaboration to Map Greenbelt Parcels
- ▶ Assessor and Surveyor Aerial Project
- ▶ Aerial Project Distribution
- ▶ Annexation Descriptions and Maps
- ▶ Foothill Canyon Overlay Zone (FCOZ) Maps
- ▶ Recorder's Office Subdivision Plat Checking
- ▶ Parley's Canyon Mining Claim Exhibits for District Attorney
- ▶ Prepared Final Local Entity Plats
- ▶ Harper/Kilgore Gravel Pit Imagery and Map for District Attorney
- ▶ Sheriff Search and Rescue Maps
- ▶ Sheriff Large Format Exercise Maps
- ▶ Clerk Election GIS Support

## Other Entities

- ▶ Millcreek Reviewed and Approved Subdivision Plats
- ▶ Millcreek City Center Drone Flight
- ▶ MSD Reviewed and Approved Subdivision Plats; Reviewed Conditional Use Permits
- ▶ UFA Mapping Support
- ▶ Road Centerline Data Updates for Valley Emergency Communications Center (VECC)
- ▶ UPD Kearns Map Book
- ▶ Cottonwood Canyons Foundation invasive species
- ▶ Murray City FLEP
- ▶ Right of Way at 4700 S 5400 W for MSD/Kearns
- ▶ 8050 W 2700 S Boundary Survey

# 2024-2025 CHALLENGES

- ▶ Managing workload consequential to the growth in population, new development, and construction with existing personnel and operating resources.
  - ▶ The County Surveyor's Office has 12 field crew FTEs to perform maintenance on the countywide Public Land Survey System (PLSS) and all field survey work for Salt Lake County projects. Additionally, field crews monitor PLSS monument construction permits to maintain/protect the PLSS on UDOT and municipal (23 municipalities) projects (per Utah Code 17.23.14 and SLCo Ordinance 14.17).
  - ▶ Excluding the County Surveyor and Chief Deputy, the County Surveyor's Office has 12.5 FTEs to manage office operations, statutory requirements (GIS mapping, permitting, County project management, etc.), and other collaborative services to County offices and the public.
- ▶ The Surveying / Engineering job market continues to be highly competitive. Salary surveys reflect wages have steadily increased due to demand.
- ▶ There continues to be a shortage of skilled technicians and professionals. This causes wages to rise, adding to the difficulties related to recruiting and retention of employees.



# 2025 Request to Extend TI Project

# REALIZED SUCCESSES of TI PLSS PROJECT

- ▶ Transitioned 5 employees from Time Limited into open merit position.
- ▶ As of September 30, 2024, we have observed, assessed and documented 3,422 monuments, exceeding our goal of 3,200.
- ▶ The project has facilitated the reestablishment, replacement and repair of the Public Land Survey System corner monuments that are essential to protect the integrity of property boundaries and the County tax system.
- ▶ Developed a mobile app to streamline and improve our monument asset tracking system.



# TI Project Expense Comparison vs Legislative Funded MRRC Program

Project Year	TI Project Expenses**	Total Number of Monuments	Cost per Monument
2022	\$332,092.80	1,425	\$233
2023	\$284,834.90	1,301	\$220
2024 through Sept	\$181,342.68	696	\$261

MRRC Program	Total Money Distributed	Total Number of Monuments	Cost per Monument
2016-2023	\$2.31M	4,539	\$509

\*\*Includes labor, equipment, vehicle, and overhead

# Why Extend the Project?

- ▶ 353 of the 3,422 monuments assessed and observed are in need of rehabilitation and/or restoration.
- ▶ We estimate an additional 707 essential monuments are in need of observation and assessment.
- ▶ Project-focused, time-limited positions allow merit FTEs to address other multifaceted statutory workload obligations.
- ▶ Realize additional cost savings and efficiencies.



## TI Budget Request

\$330K to Extend TI PLSS Project (**Proposed reduction of \$54K from original request**) \*\*

**\*\*Employees were hired at reduced salaries and benefits post submittal**

