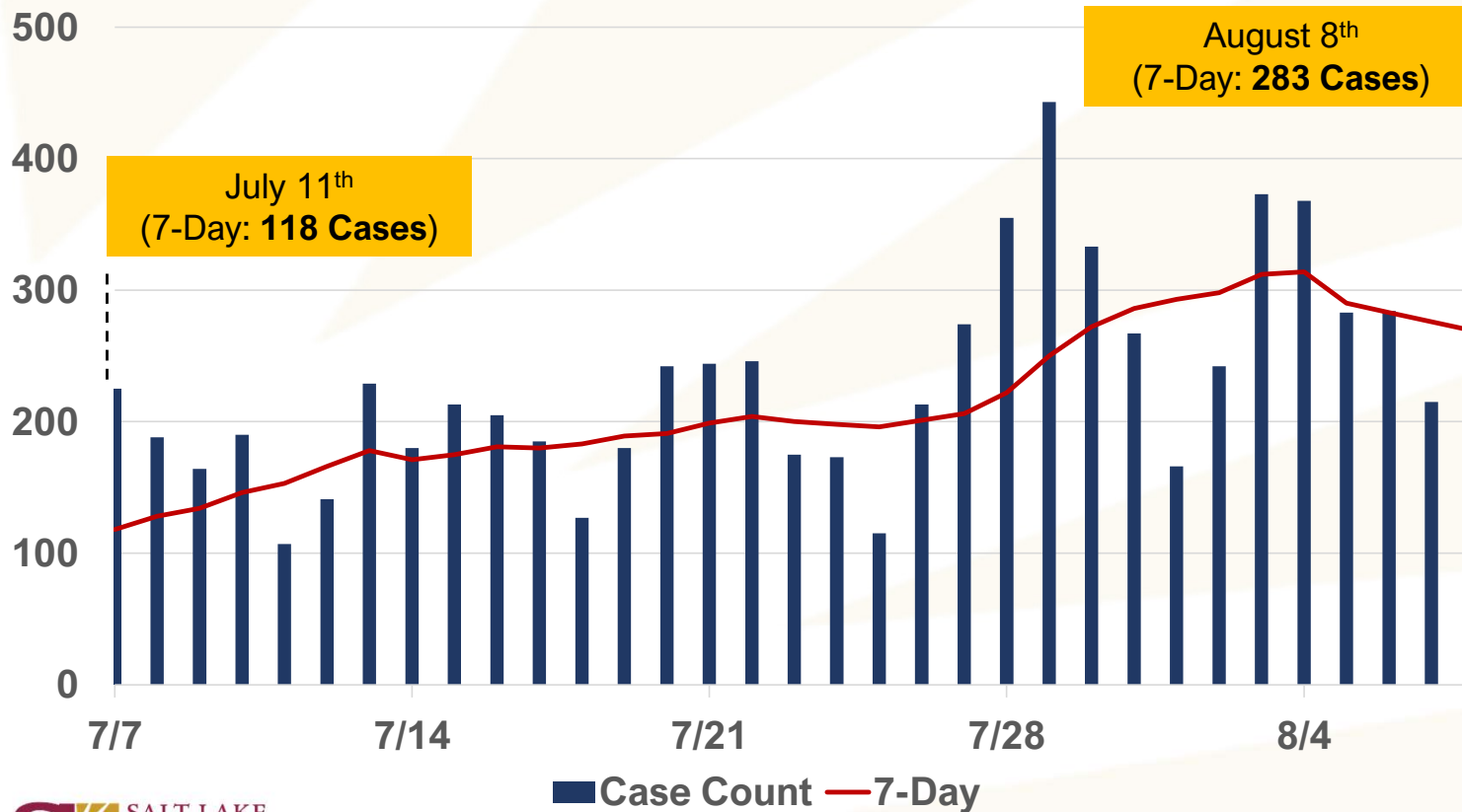


# COVID-19 WEEKLY UPDATE

August 10, 2021

# Our 7-Day Case Rate is 64% Higher Than Last Year

Salt Lake County Confirmed COVID-19 Cases



Change Over 1 Week:

**3%**  
Relative Decrease In  
7-day Case Rate

7-Day Case Rate is  
**64% Higher**  
Than this time last  
year (8/8/21)\*

\* 7-Day Case Rate on Aug 8, 2020:  
179 Cases

# 62% of SLCo Residents 12+ Are Fully Vaccinated

## Vaccination Rates for *Total Population*:

Location	Population With At Least 1 Dose	Population Fully Vaccinated
<b>Salt Lake County</b>	<b>57.2%</b>	<b>49.9%</b>
<b>Utah</b>	<b>53.0%</b>	<b>46.7%</b>
<b>United States</b>	<b>58.7%</b>	<b>50.1%</b>

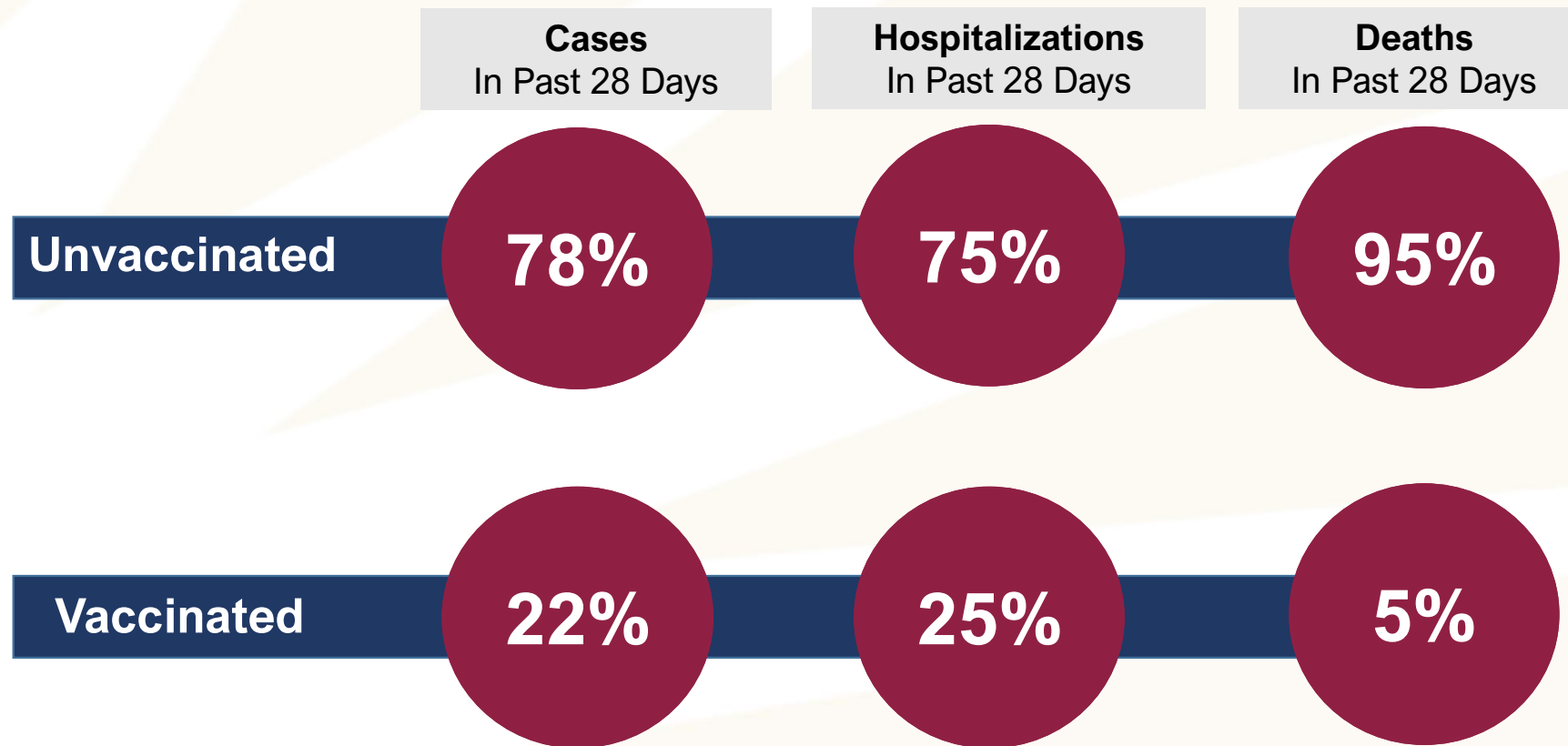
## Vaccination Rates for *Eligible Population (12+)*:

Location	Population With At Least 1 Dose	Population Fully Vaccinated
<b>Salt Lake County</b>	<b>71.1%</b>	<b>62.0%</b>
<b>Utah</b>	<b>65.6%</b>	<b>57.7%</b>
<b>United States</b>	<b>68.6%</b>	<b>58.7%</b>

## Salt Lake County

Age Group	% of Age Group Fully Vaccinated
0-4	0%
5-11	0%
12-17	42%
18-29	56%
30-39	54%
40-49	66%
50-59	71%
60-69	78%
70-79	84%
80+	75%

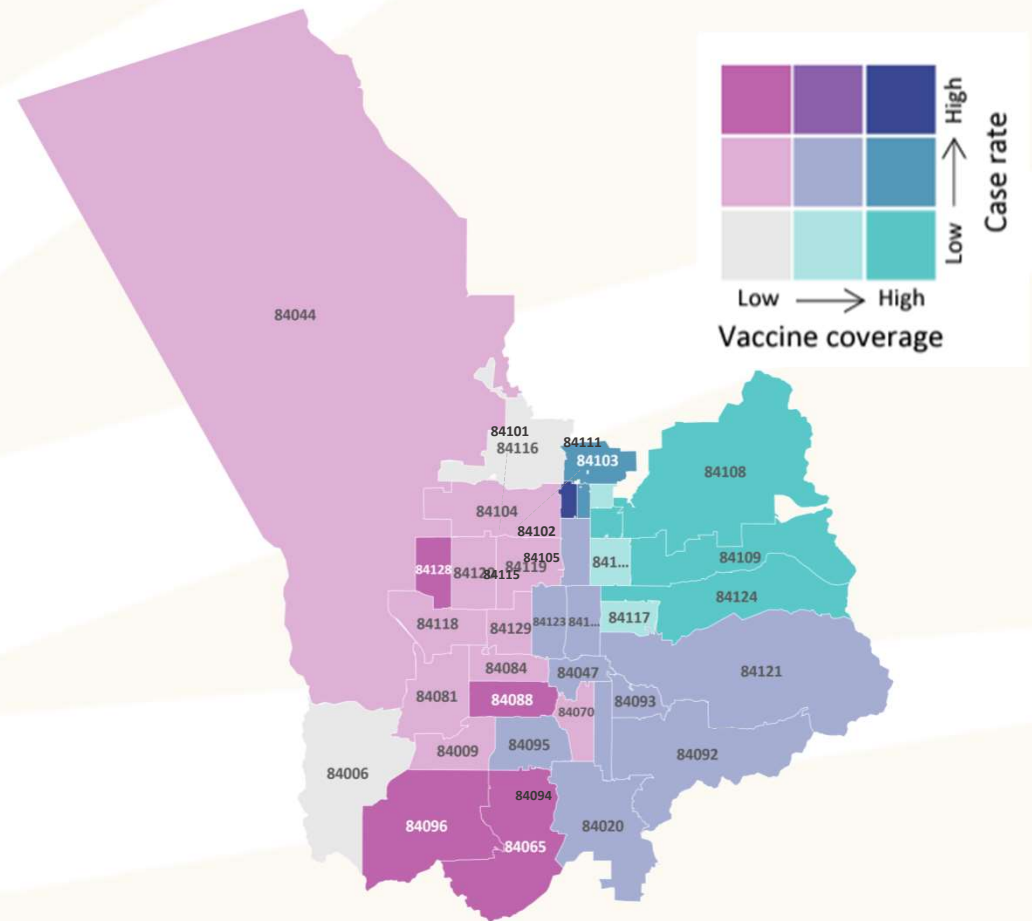
# With No Herd Immunity or Preventive Measures, Everyone's Risk Increases With Delta



# Case Rates and Vaccination Coverage By Zip Code

Zip Codes with **lowest vaccination coverage** and **highest case rates**:

	Case Rate Per 100K	% Fully Vaccinated
<b>84065</b> (Riverton)	906	44.5%
<b>84096</b> (Herriman)	841	40.9%
<b>84128</b> (West Valley)	580	43.1%
<b>84088</b> (West Jordan)	570	44.6%



# Without Preventive Measures, Severe Illness Will Continue to Increase

New C+ Hospitalizations

67

20,001 Cumulative

Confirmed C+ in Hospital

373

Confirmed C+ in ICU

154

Total ICU Utilization

79%

Referral Center ICU Utilization

83%

Intermountain has 3 ICU beds available in Salt Lake County (As of Aug 8th)

# Upcoming School Vaccination Clinics

**13**

Upcoming School  
Vaccination Clinics  
In August



Northstar Academy	8/13/2021
Glendale Middle School	8/20/2021
SLCC Taylorsville Campus	8/24/2021
Juan Diego Catholic High School	8/24/2021
Utah International Charter School	8/25/2021
Waterford School	8/25/2021
Matheson Junior High School	8/25/2021
SLCC South City Campus	8/25/2021
SLCC Jordan Campus	8/26/2021
SL Center for Science Education	8/27/2021
Northwest Middle School	8/31/2021
Rose Park Elementary School	8/31/2021

# What is Happening in Other States



- **949 students and staff** quarantined in the first week of school resuming in Marion County School District.
- **54 students and 11 staff** have tested positive.
- **27 children are hospitalized across the state** due to COVID.



- Since FRIDAY (August 6), there has been **16,541 new cases** of COVID reported in the State of Louisiana.
- Of that, **3,106 cases** have been reported in children.
- Louisiana is experiencing its highest day 7-day average in the pandemic: 4,603 cases.