



FY 2024 Proposed Transportation 4th Quarter Projects



FY 2024 Proposed Transportation 4th Quarter Projects

Planning and Transportation
December 5, 2023

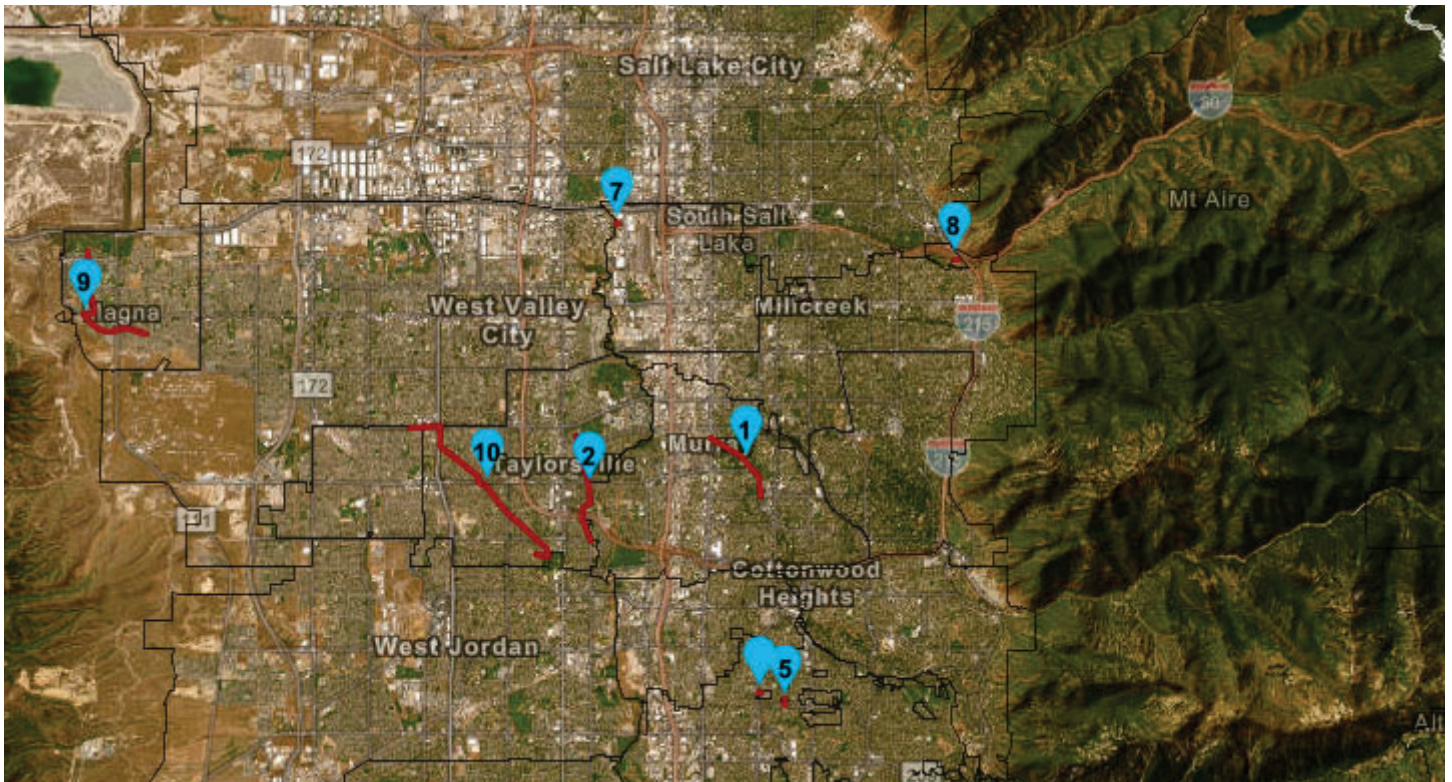
4th Quarter Eligible Uses (Utah Code 59-12-2212.2)

- Road construction, maintenance, or operation;

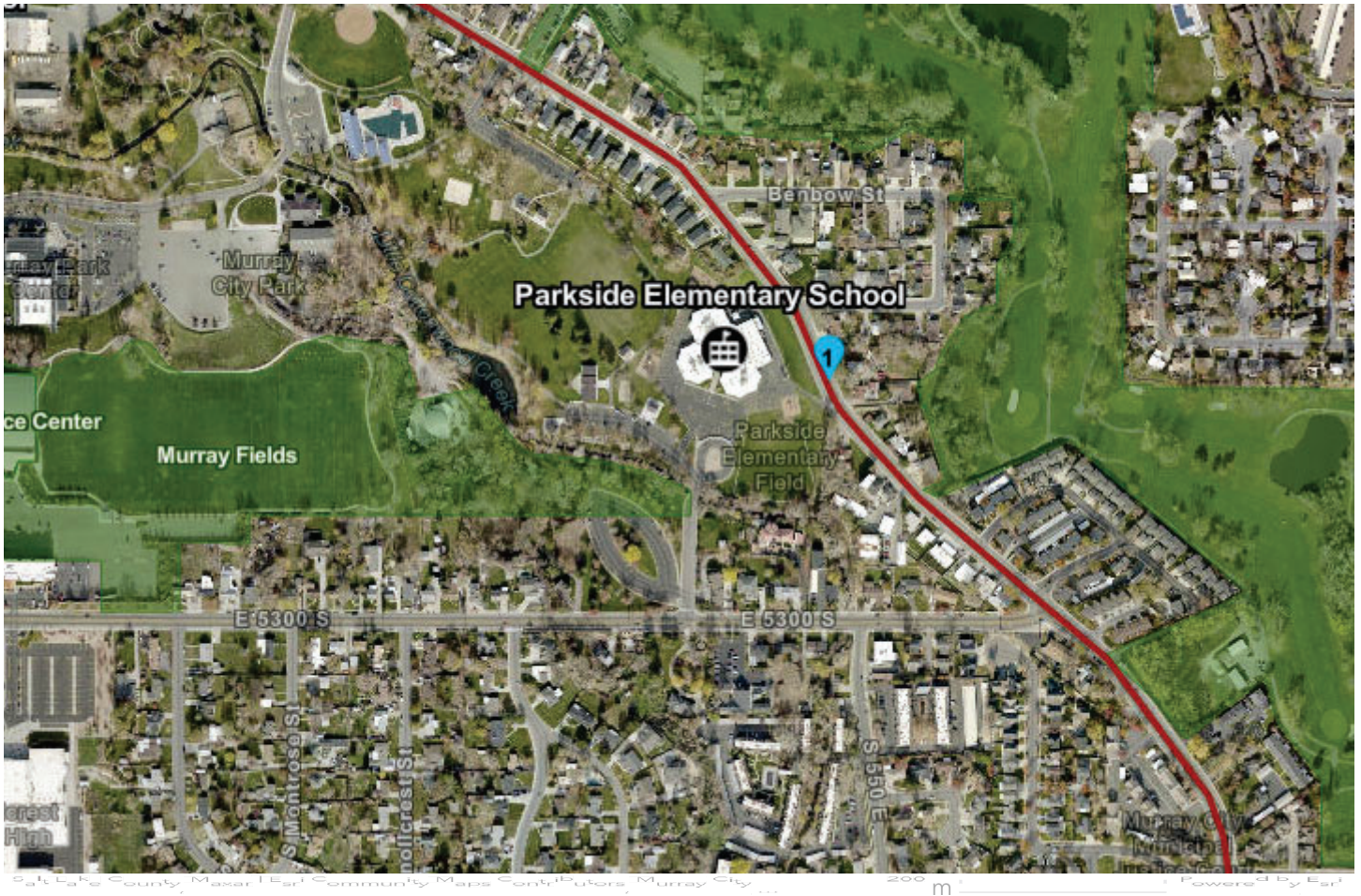
- Traffic & pedestrian safety infrastructure, such as sidewalk, curb and gutter, safety feature, traffic sign, or street lighting;
- Streets, alleys, roads, highways and thoroughfares of any kind, including connected structures;
- Airport facility;
- Active transportation facility this is for nonmotorized vehicles and multimodal transportation and connects an origin with a destination (good examples, Parley's Trail and Jordan River Parkway);
- An intelligent transportation system;
- System for public transit; Other modes and forms of conveyance used by the public;
- Debt service on bond issuance costs related to a project for any facility listed above;
- Corridor preservation related to a project of facility described above

Municipal Projects

	City	Name of Project	From	To	Project Length (miles/feet)	Estimated Project Cost	Project Description	Note
1	Murray	Vine Street	State Street	5600 South	1.46 miles	\$300,000	Upgrade bicycle infrastructure (from bike lanes to buffered bike lanes) and add active transportation capacity westbound from Atwood to State Street. Addition of one mid-block crosswalk to Murray Park and replace a school crosswalk	Mid-block crosswalk will ensure ADA compliant access to Parkside Elementary.
2	Taylorsville	North Jordan Canal Feasibility Study	4800 South	6200 South	1.95 miles	\$2,100,000	Study to determine cost estimate for design for North Jordan Canal	Dominion Energy is replacing main gas line and Taylorsville would like to coordinate construction by boxing the canal and constructing a multi-modal path
3	Riverton	Welby Jacob Canal	11800 South	12600 South	1.09 miles	\$2,000,000	Non-motorized pedestrian and bike trail along the Welby Jacob canal	Trail is listed in Riverton's active transportation plan and also the 2023-2050 Regional Transportation Plan; one of 4 segments being completed that will span Riverton city boundaries; trail will connect to Mountain View Village, existing Daybreak TRAX station (this trail is within 2.4 miles of the station); Safe Route to School for Midas Creek Elementary School when the full trail corridor is completed; Safe Tour to School for South Hills Middle School.
4	South Jordan (UTA)	Central Station (new ballpark station)	1/2 between South Jordan Parkway	Lake Avenue	Not applicable	\$750,000	Portion of local match as required by UTA	construction expected to start in early spring 2024; \$4,500,000 total cost estimate
5	GSLMSD - unincorporated Salt Lake County	Safe Route to School - 1000 East	8514 South	8600 South	0.12 miles	\$550,000	Construct curb, gutter, and sidewalk on the west side of 1000 East	Sidewalk will improve safe walking area for students going to and from East Sandy Elementary School
6	GSLMSD - unincorporated Salt Lake County	Safe Route to School - 8425 South	700 East	745 East	0.08 miles	\$500,000	Construct curb, gutter, and sidewalk on both sides of 8425 South.	Sidewalk will improve safe walking area for pedestrians and students



Fourth Quarter Overview



Vine Street

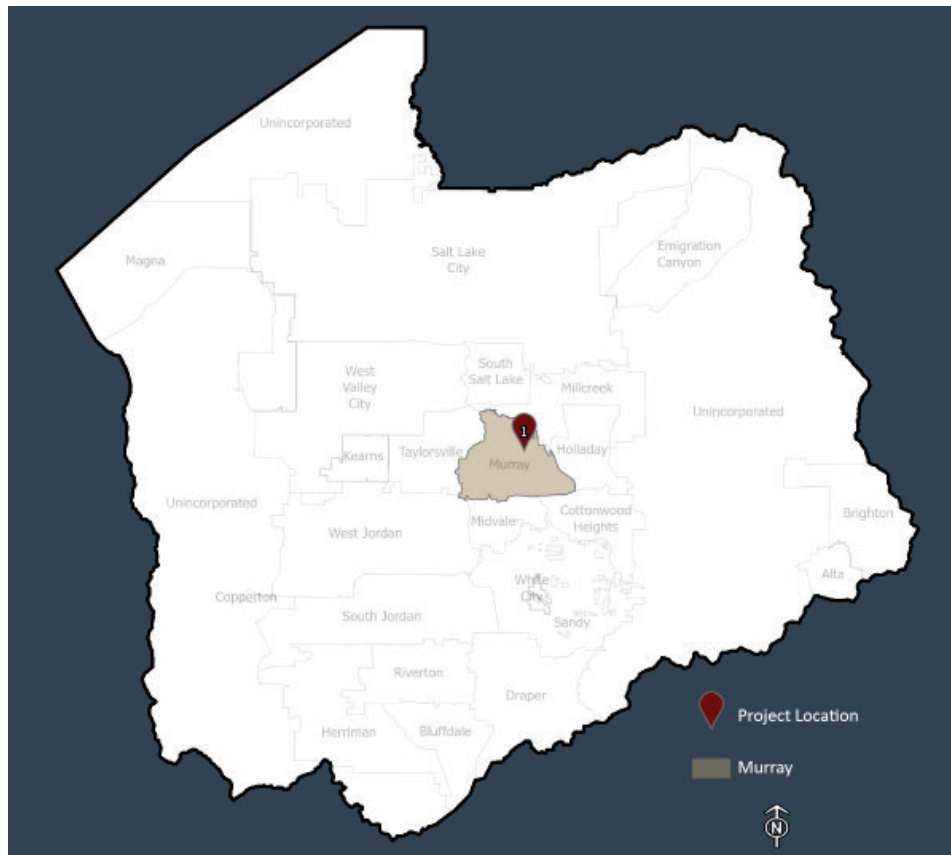
Jurisdiction: Murray

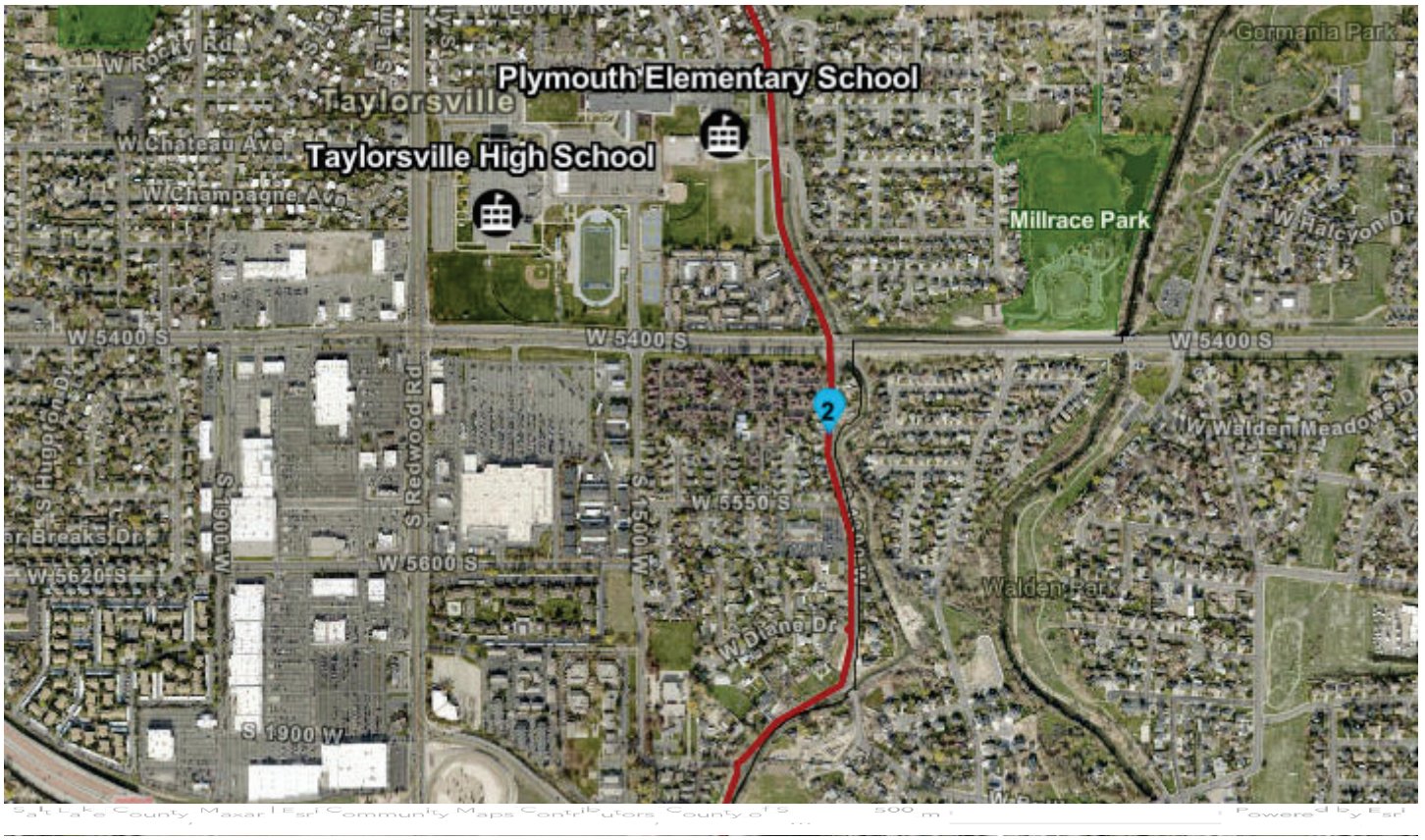
Estimated Cost: \$300,000

Project Length: ~1.5 miles

Upgrade bicycle infrastructure (from bike lanes to buffered bike lanes) and add active transportation capacity westbound from Atwood to State Street. Addition of one mid-block crosswalk to Murray Park and replace a school crosswalk

Mid-block crosswalk will ensure ADA compliant access to Parkside Elementary.





North Jordan Canal Feasibility Study

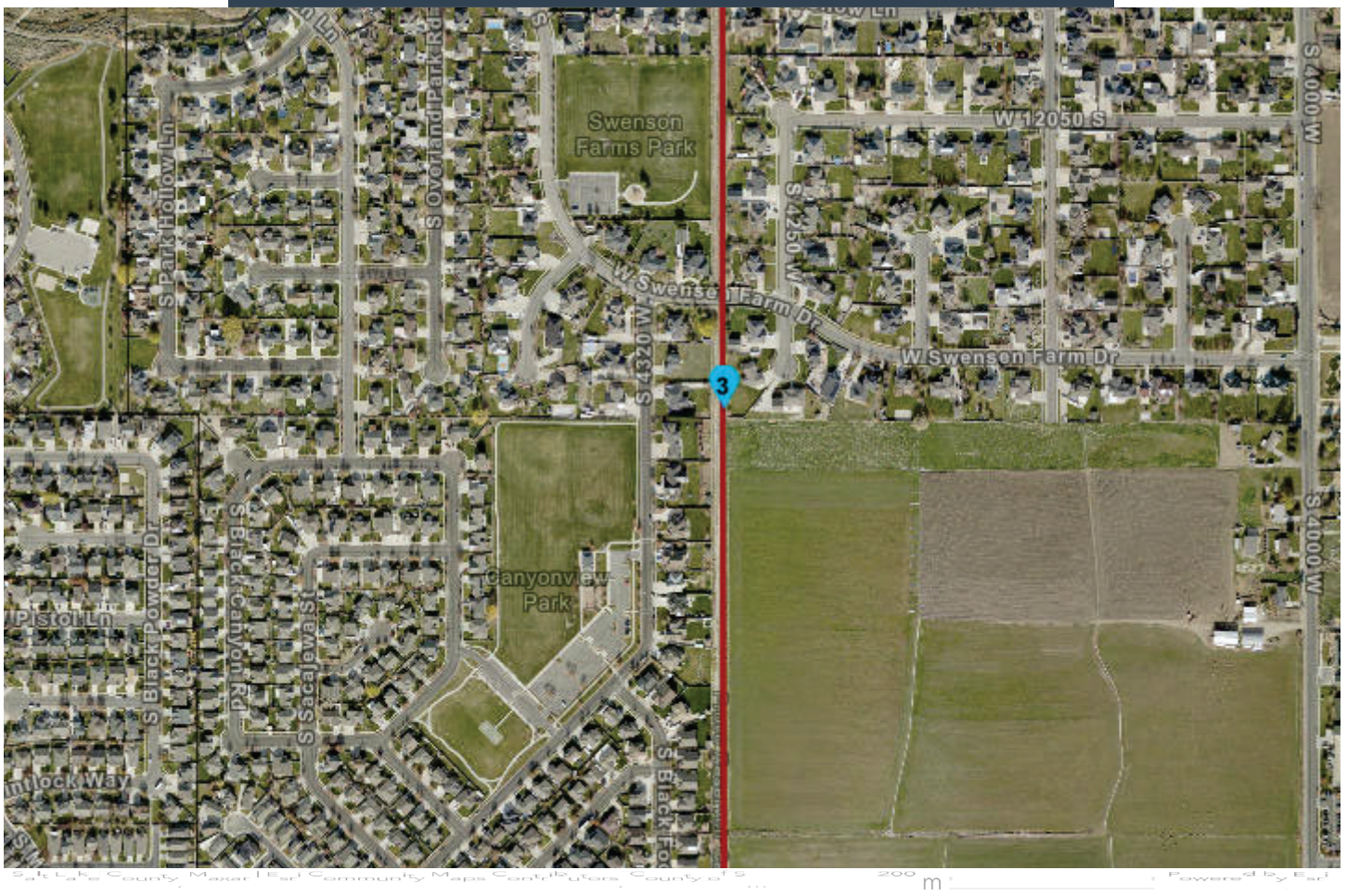
Jurisdiction: Taylorville

Estimated Cost: \$2,100,000

Project Length: ~2 miles

Study to determine cost estimate for design for North Jordan Canal

Dominion Energy is replacing main gas line and Taylorville would like to coordinate construction by boxing the canal and constructing a multi-modal path



Welby Jacob Canal

Jurisdiction: Riverton

Estimated Cost: \$2,000,000

Project Length: ~ 1.1 miles

Non-motorized pedestrian and bike trail along the Welby Jacob canal

Trail is listed in Riverton's active transportation plan and also the 2023-2050 Regional Transportation Plan; one of 4 segments being completed that will span Riverton city boundaries; trail will connect to Mountain View Village, existing Daybreak TRAX station (this trail is within 2.4 miles of the station); Safe Route to School for Midas Creek Elementary School when the full trail corridor is completed; Safe Tour to School for South Hills Middle School.; Not in TIF area.



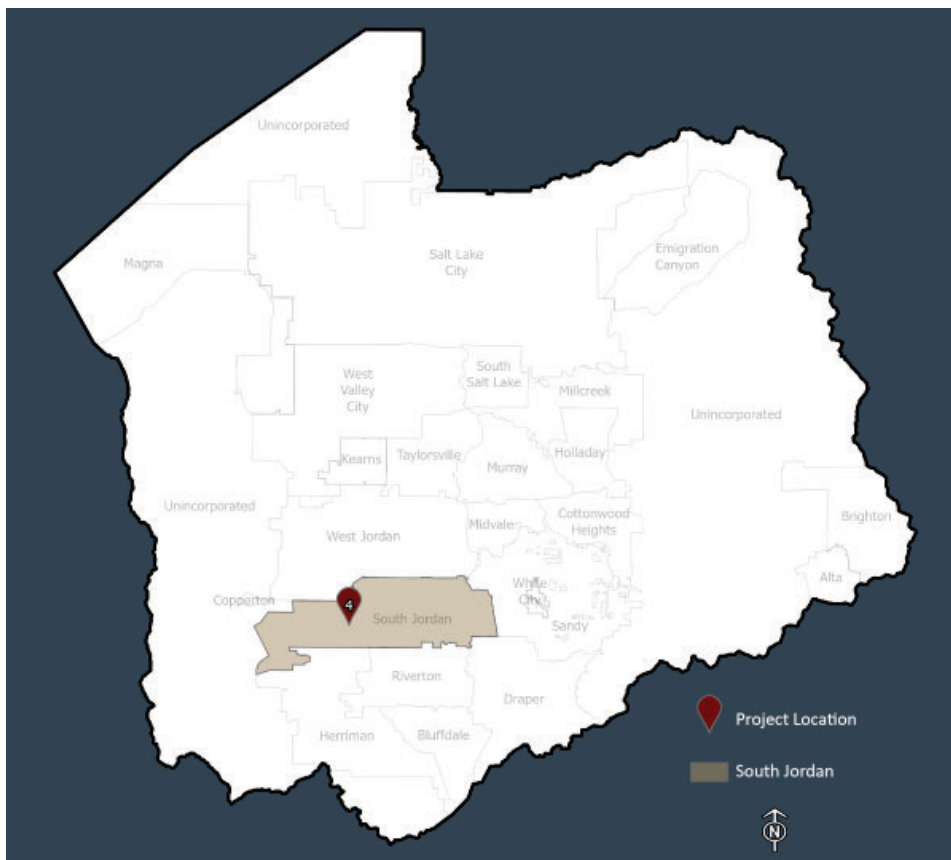
Central Station (new ballpark station)

Jurisdiction: South Jordan (UTA)

Estimated Cost: \$750,000

Portion of local match as required by UTA

Construction expected to start in early spring 2024; \$4,500,000 total cost estimate





Safe Route to School - 1000 East

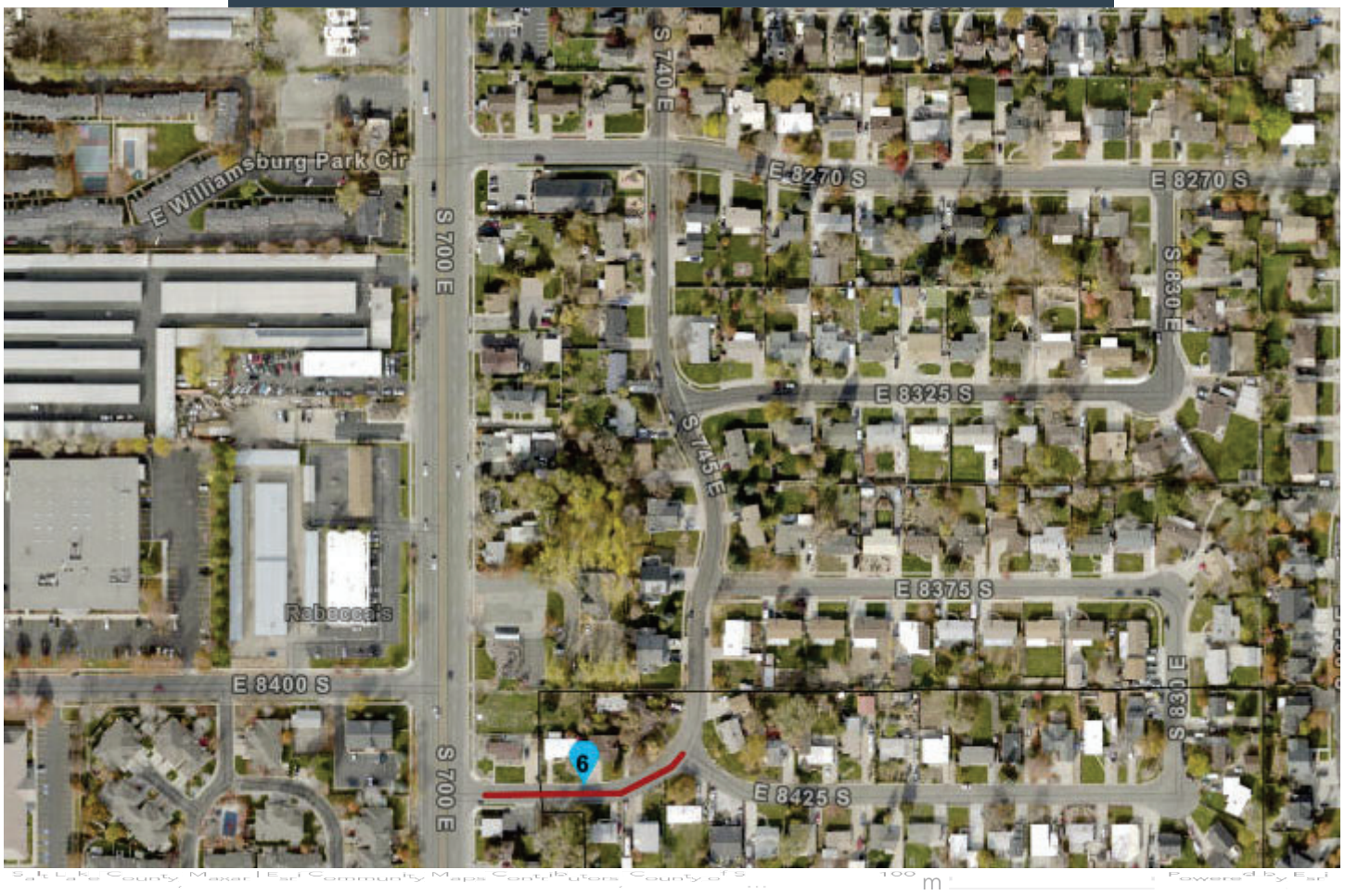
Jurisdiction: GSLMSD - Unincorporated Salt Lake County

Estimated Cost: \$550,000

Project Length: ~ 0.12 miles

Construct curb, gutter, and sidewalk on the west side of 1000 East

Sidewalk will improve safe walking area for students going to and from East Sandy Elementary School



Safe Route to School - 8425 South

Jurisdiction: GSLMSD - Unincorporated Salt Lake County

Estimated Cost: \$500,000

Project Length: ~ 0.08 miles

Construct curb, gutter, and sidewalk on both sides of 8425 South.

Sidewalk will improve safe walking area for pedestrians and students



Parks and Recreation Projects

	City	Name of Project	From	To	Project Length (miles/feet)	Estimated Project Cost	Project Description	Note
7	West Valley City / South Salt Lake	Jordan River Parkway Trail (2320 South) Replace Bridge Decking	2320 South	2320 South	172 feet long; 1,050 square feet	\$250,000	Remove existing wood plank decking; install pressure treated 2x6 wood plank decking	Provides for safe east-west passage across the existing bridge over the Jordan River
8	GSLMSD - Unincorporated Salt Lake County	Parleys Trail Repair	I-80 Bridge	S-Curve	2,000 linear feet	\$ 150,000	Install 2-inch asphalt overlay; install area drains to intercept runoff from I-80	This trail segment is 16 years old with multiple I-80 drainage issues. New asphalt pavement will provide a safe surface for trail users.
9	Kearns / Magna Metro Township	Local Match for Utah & Salt Lake Canal Trail Phase 5	8000 West	9200 West	3 miles	\$200,000	Continuation of trail already built along with Utah and Salt Lake Canal. Magna Copper Park will be a destination point when the trail segment is completed. Potential alignment to be finalized.	
10	Taylorsville / Kearns Metro Township	Local Match for Utah & Salt Lake Canal Phase 6 (2200 West)	4700 South	6400 South	3.84 miles	\$480,000	Continuation of trail along with Utah and Salt Lake Canal. Potential alignment to be finalized.	
11	Herriman	Equestrian Entry Road, Trailhead Amenities, including Parking Area (excluding restrooms)	Butterfield Trailhead	Not applicable	2.5 Acres	\$2,720,320	Construct of equestrian trailhead and parking area; install day use parking fencing; construction of stick frame building for UPD for search and rescue equipment storage and Parks & Rec maintenance storage; enhanced directional signage for trailhead	Provides essential parking facilities for the new Southwest Canyon Recreation Area and Trail System; building will house 2 Parks & Rec staff members



Jordan River Parkway Trail (2320 South) Replace Bridge Decking

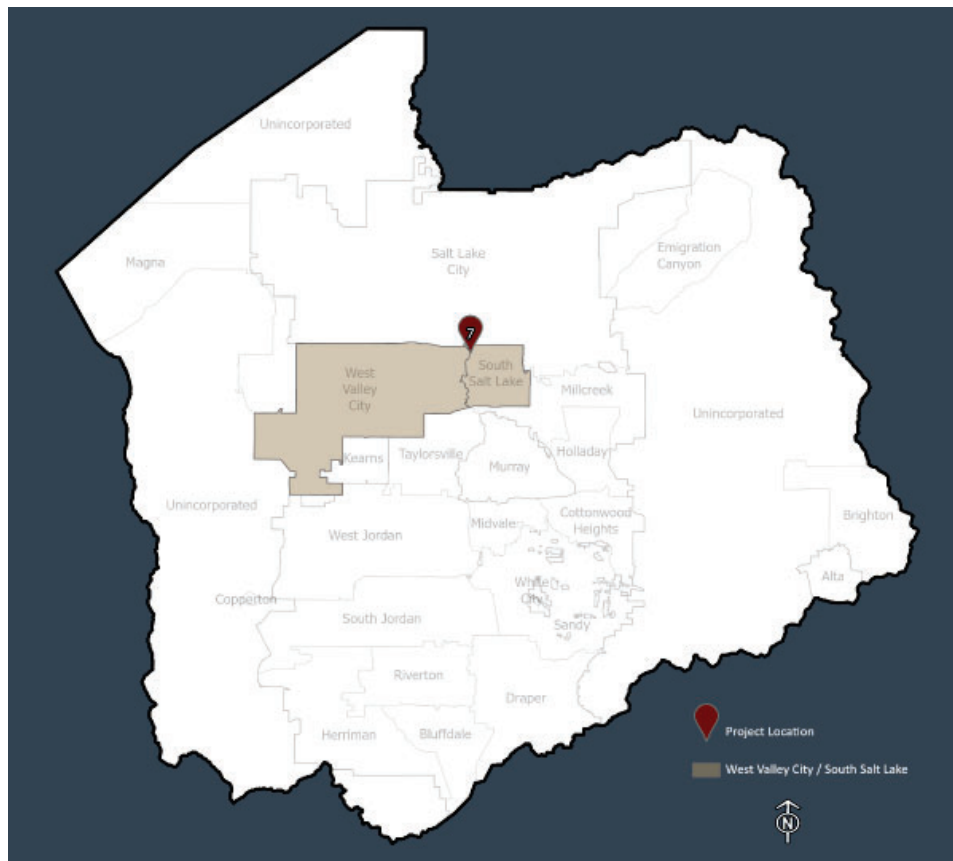
Jurisdiction: West Valley City / South Salt Lake

Estimated Cost: \$250,000

Project Length: ~ 172 feet long; 1,050 square feet

Remove existing wood plank decking; install pressure treated 2x6 wood plank decking

Provides for safe east-west passage across the existing bridge over the Jordan River





Parleys Trail Repair

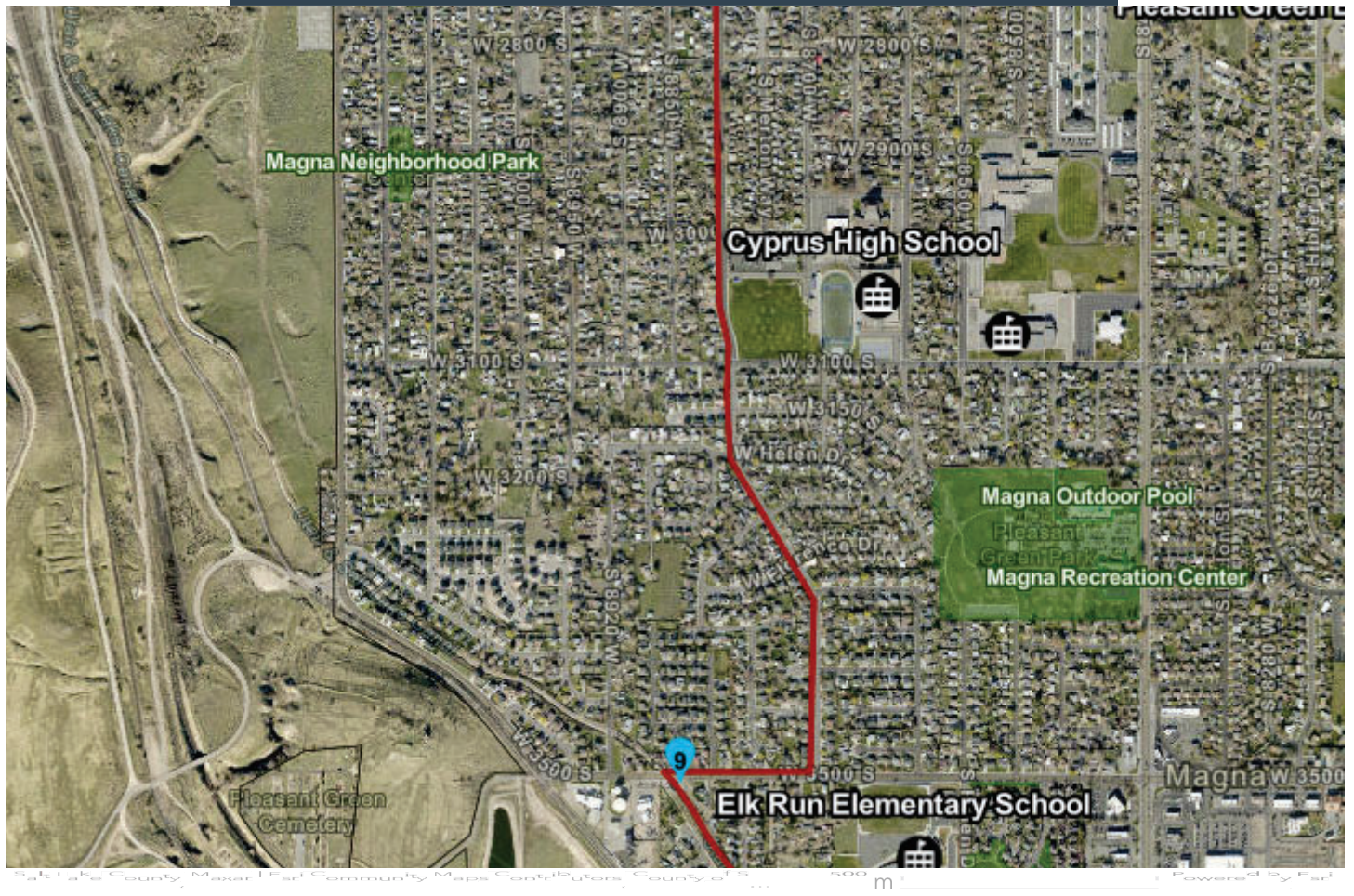
Jurisdiction: GSLMSD - Unincorporated Salt Lake County

Estimated Cost: \$150,000

Project Length: ~ 2,000 linear feet

Install 2-inch asphalt overlay; install area drains to intercept runoff from I-80

This trail segment is 16 years old with multiple I-80 drainage issues. New asphalt pavement will provide a safe surface for trail users.



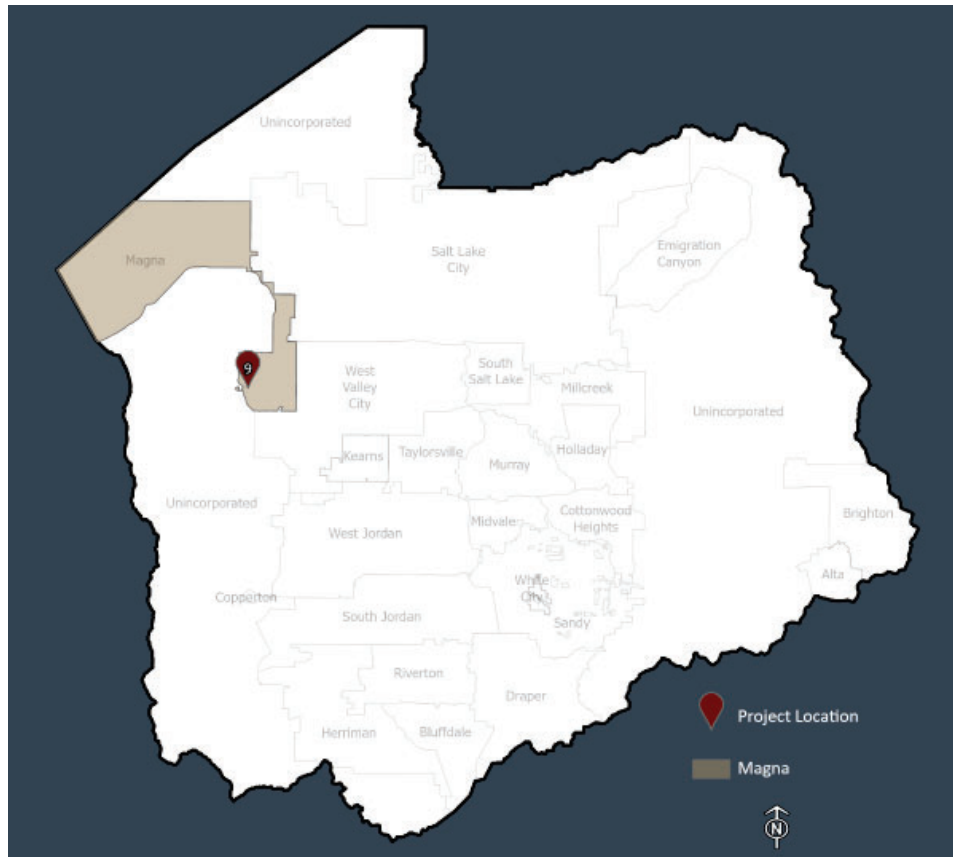
Local Match for Utah & Salt Lake Canal Trail Phase 5

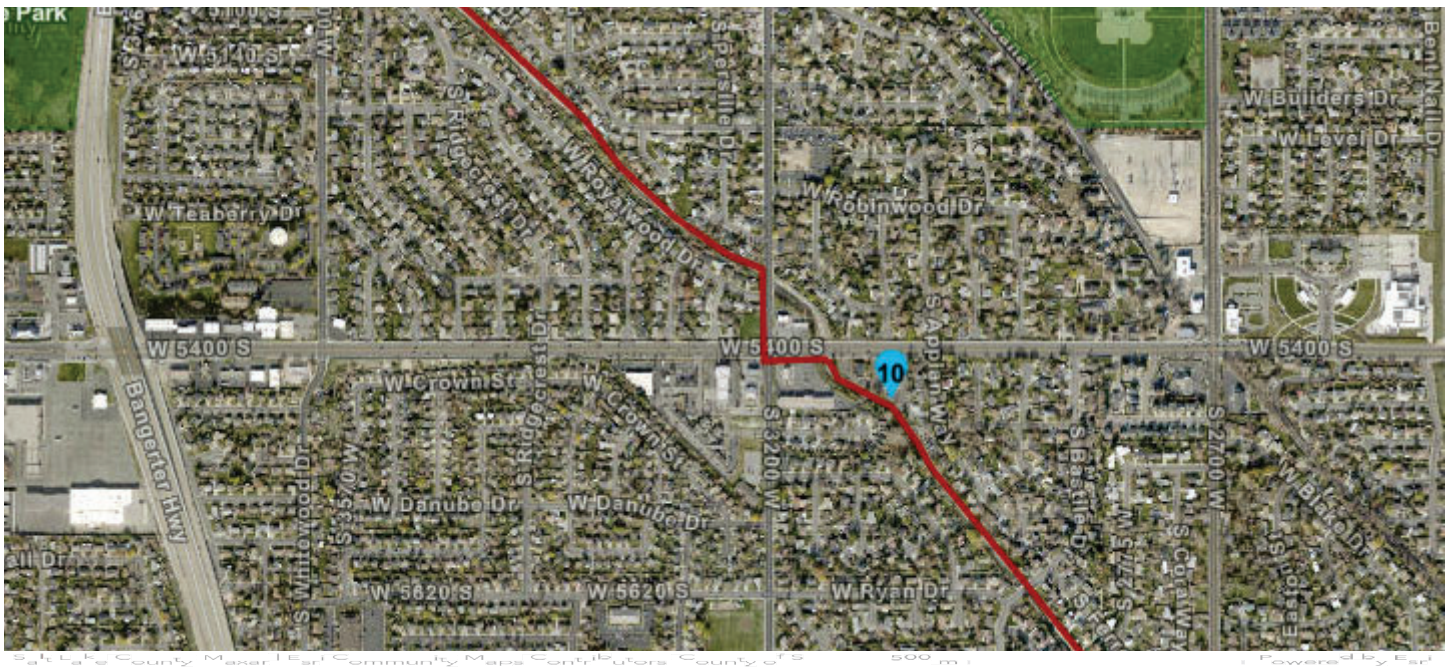
Jurisdiction: Kearns / Magna Metro Township

Estimated Cost: \$200,000

Project Length: ~ 3 miles

Continuation of trail already built along with Utah and Salt Lake Canal. Magna Copper Park will be a destination point when the trail segment is completed. Potential alignment to be finalized.





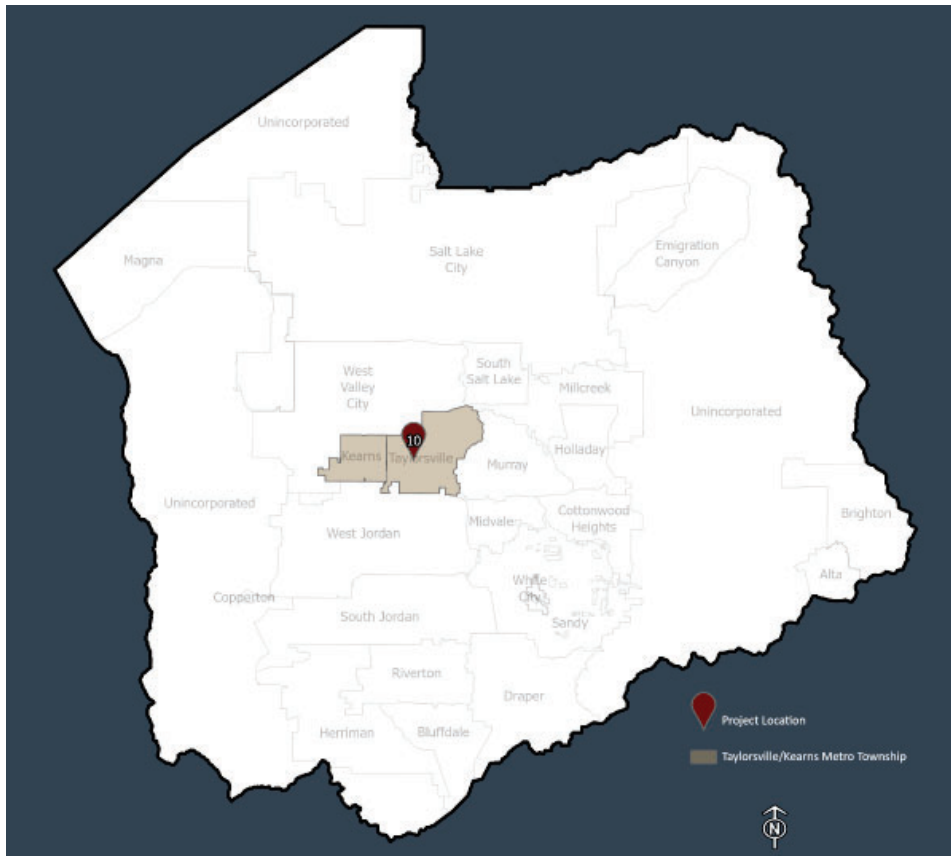
Local Match for Utah & Salt Lake Canal Phase 6 (2200 West)

Jurisdiction: Taylorsville / Kearns Metro Township

Estimated Cost: \$480,000

Project Length: ~ 3.84 miles

Continuation of trail along with Utah and Salt Lake Canal. Potential alignment to be finalized.



Equestrian Entry Road, Trailhead Amenities, including Parking Area (excluding restrooms)

Jurisdiction: Herriman

Estimated Cost: \$2,720,320

Project Area: ~2.5 Acres

Construct of equestrian trailhead and parking area; install day use parking fencing; construction of stick frame building for UPD for search and rescue equipment storage and Parks & Rec maintenance storage; enhanced directional signage for trailhead

Provides essential parking facilities for the new Southwest Canyon Recreation Area and Trail System; building will house 2 Parks & Rec staff members



Cost Summary

Available: \$16,762,800	
Type	Cost Summary
Operational Expense	\$2,345,280
Municipal Projects	\$6,200,000
Parks & Rec	\$3,800,320
Hold Back (due to future revenue uncertainty)	\$4,417,200
Total	\$16,762,800

Operational Expenses		
Salt Lake County Trail Maintenance (Parks & Rec) (10% of 4th Quarter Local Option Sales Tax Collections)	\$1,676,280	2024 annual trail maintenance: See below for conditions
		1) funds used for trail maintenance equipment must result in equipment that emits less air pollutants than the equipment being replaced. 2) 20% of the funds (\$200,000) must be used to maintain trails within and connected to the Jordan River Parkway.
Federal Lands Access Program (FLAP) local match for Upper Mill Creek Canyon Road Improvement Project	\$553,000	Federal Lands Access Program (FLAP) local match for Upper Mill Creek Canyon Road Improvement Project
Intrafund Charges to pay for RP&T staff to administer the 4th Quarter funds	\$116,000	Intrafund transfer to cover costs of administering the 4th quarter funds
	Total: \$2,345,280	