



Overview of *Surveyor's Office* 2024 Budget

Presented October 31, 2023

INTRODUCTION

Salt Lake County Surveyor's Office provides numerous statutory and professional services to the County and public. Additionally, a priority is placed on promoting efficient use of the office as a Countywide resource. The Surveyor's Office utilizes specialized technological infrastructure and a number of shared Countywide IT resources to provide services.

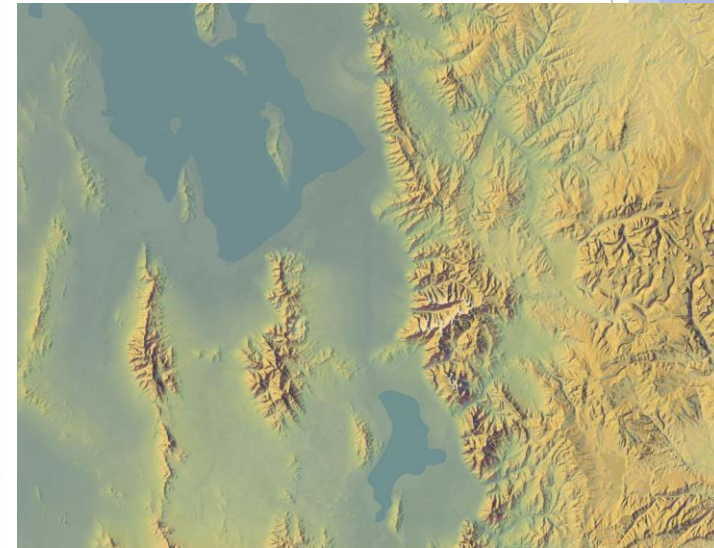
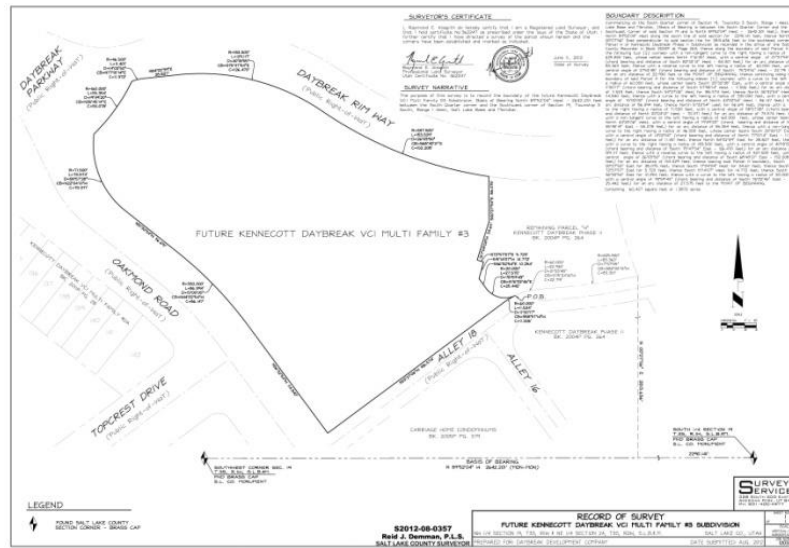
2024 Proposed Requested Budget - \$4,018,000

Surveyor's budget is funded by both the Tax and General Fund, 19% and 81% respectively.

- ▶ Categorical breakdown of the Surveyor's budget is:
 - ▶ 84% Personnel
 - ▶ 10% Operations
 - ▶ 6% Indirect Costs

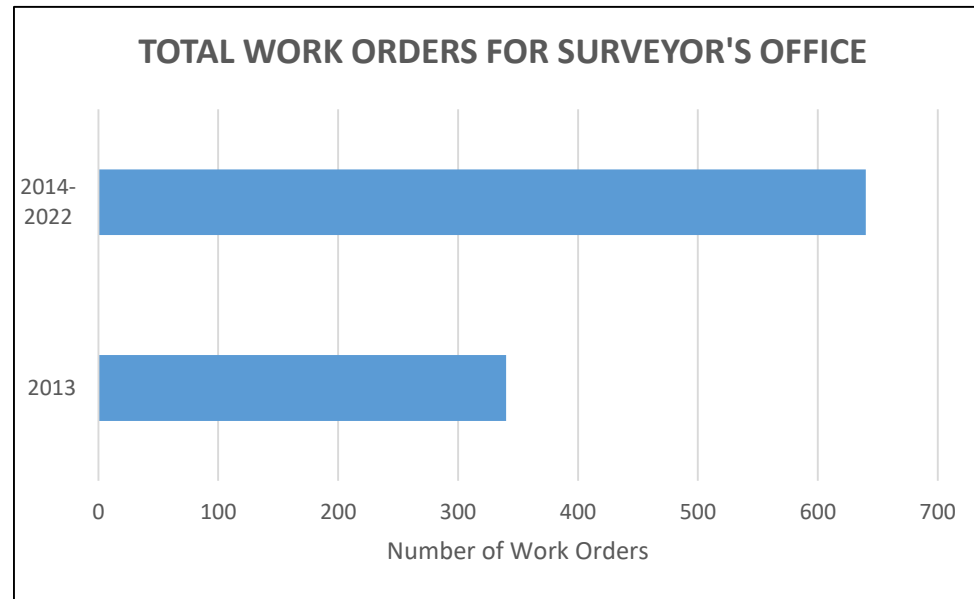
PRIMARY STATUTORY FUNCTIONS

- ▶ Maintain Public Land Survey System (PLSS)
- ▶ Perform or arrange for all survey work for the County
- ▶ Review, maintain and make available to the public all private survey records
- ▶ Provide maps to County offices
- ▶ Issue and manage Countywide Monument Disturbance Permits



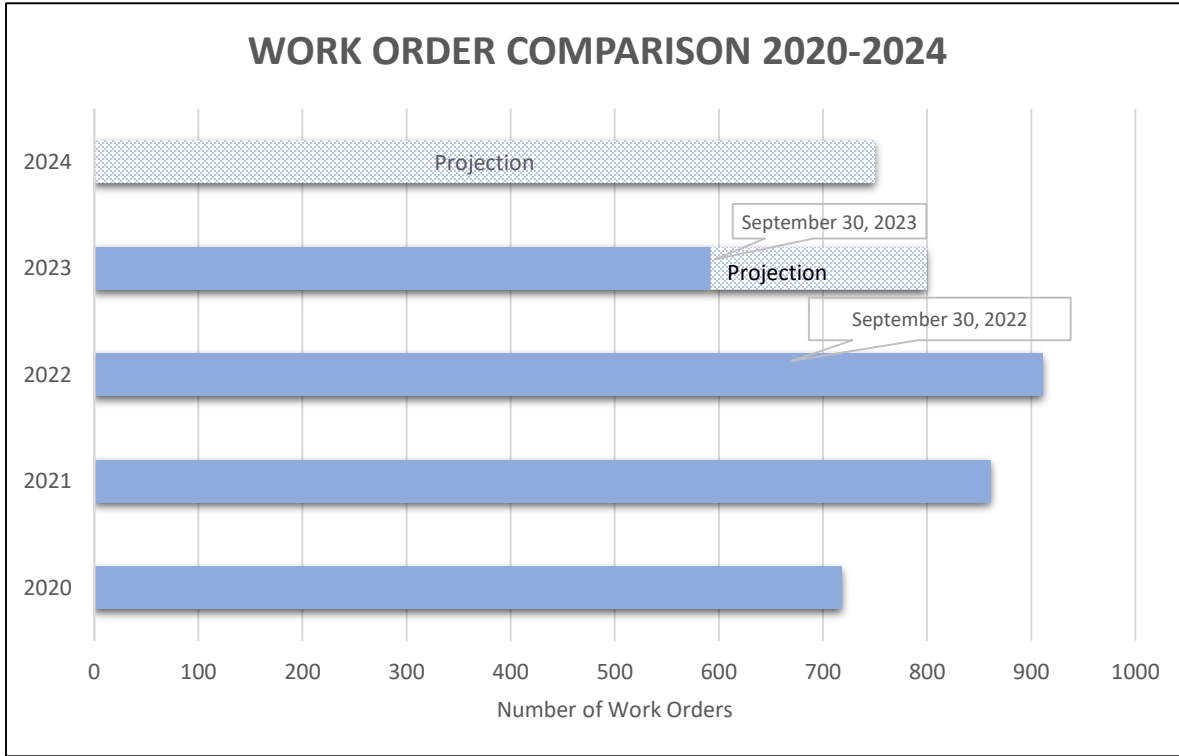
PERFORMANCE MEASUREMENT 2013-2023

- ▶ A key performance measure is the number of work order requests from both the public and government entities. Since year ending 2013 through 2023, the Surveyor's Office has averaged 640 work order requests per year, which reflects an 88% increased use of Surveyor's resources.



2024 WORKLOAD TRENDS & PROJECTIONS

Development construction related to the Surveyor's Office statutory duties continues to be consistently strong. However, 2023 is trending towards a 13% decline in this type of activity.



***The Fall months typically realize large increases in workload due to the construction industry push to complete projects prior to winter.

2023 COLLABORATIVE PROJECTS OF INTEREST

Community Services

- ▶ UT & SL Canal Corridor Cross Sections
- ▶ Sugarhouse Park Pavilion Survey
- ▶ Northwest Recreation Center Natatorium Scan
- ▶ Big Cottonwood Regional Park Lease Survey
- ▶ Redwood Recreation Subdivision
- ▶ Parks & Rec Master Plan Mapping Support
- ▶ Jordan Narrows Survey
- ▶ Parleys Trail Construction Drone Flight
- ▶ Millcreek City Center Drone Flight
- ▶ **Draper Conservation Easement (Landslide) Drone Flight**
- ▶ Jordan River Bridge and Trail Project
- ▶ Park Topographies: Crestwood Park, Constitution Park, Hunter Park, Harmony Park, David Gourley Park, Murray Park Sports Fields, Big Cottonwood Regional Park Playground
- ▶ Dimple Dale boundary survey and subdivision plat
- ▶ Easement preparation of four portage sites along the Jordan River

- ▶ Library Services Creation and Maps
 - ▶ Map Locations and Patron Usage
 - ▶ Drone Video Tours and Photos of County Libraries
- ▶ Lancer Way Library
- ▶ **Zoo, Arts and Parks (ZAP) Events Project**

Human Services

- ▶ Sunday Anderson Senior Center Boundary and Topo Survey
- ▶ 10th East Senior Center Boundary and Topo Survey
- ▶ Cool Zone Web Map
- ▶ Weeds & Bees Collector App
- ▶ Meals On Wheels Web Map

Administrative Services

- ▶ Preparation of Easement Description & Exhibit for Real Estate projects
- ▶ Preparation of Conveyance Documents for County owned surplus properties
- ▶ Salt Palace and Abravanel Hall Topo

2023 COLLABORATIVE PROJECTS OF INTEREST (continued)

Office of Regional Development

- ▶ Access to Opportunity Mapping Tool
- ▶ Public Asset Mapping Assistance
- ▶ **HB 440 Homeless Shelter Location Interactive Map**
- ▶ Homeless Point in Time (PIT) Count, Survey123 and Mapping Support
- ▶ Public Right of Way in Northwest Quadrant
- ▶ Southwest Waterways Visioning Plan
- ▶ Scott Pond Outfall under Scott Avenue
- ▶ Sewerage Canal Easements and Rights of Way
- ▶ Emigration Canyon Slope Stabilization Topo
- ▶ Preparation and/or review of survey control sheets for Engineering/Flood Control projects
- ▶ Research canal and creek rights of way encroachments
- ▶ Preparation and/or review of utility and construction easements
- ▶ Prepared documents to adjust rights of way in Camp Kearns

Public Works

- ▶ Safe Sidewalk Program
 - ▶ Intersection of Borax Ave and Copper in Kearns
 - ▶ Western Drive in Magna
 - ▶ 10000 S 2700 E in Unincorporated County
- ▶ Old & New Bingham Highway Right of Way
- ▶ Stockpile Volumes Drone Flights
- ▶ Jordan River Surplus Canal FEMA Cross Sections
- ▶ Jordan River Surplus Canal Property Collection and Staking

2023 COLLABORATIVE PROJECTS OF INTEREST (continued)

Elected Officials

- ▶ Mayor's Office Flip the Strip Project
- ▶ Assessor's Office Collaboration to Map Greenbelt Parcels
- ▶ Assessor and Surveyor Aerial Project
- ▶ Aerial Project Distribution
- ▶ Annexation Descriptions and Maps
- ▶ Foothill Canyon Overlay Zone (FCOZ) Maps
- ▶ Recorder's Office Subdivision Plat Checking
- ▶ Parley's Canyon Mining Claim Exhibits for District Attorney
- ▶ Prepared Final Local Entity Plats

Other Entities

- ▶ Millcreek Reviewed and Approved Subdivision Plats
- ▶ MSD Reviewed and Approved Subdivision Plats; Reviewed Conditional Use Permits
- ▶ UFA Mapping Support
- ▶ Road Centerline Data Updates for Valley Emergency Communications Center (VECC)
- ▶ International Rescue Committee (IRC) Mapping

2023-2024 CHALLENGES

- ▶ Managing increased field and office workload due to growth in population, development, and construction with status quo personnel resources.
 - ▶ The County Surveyor's Office has 12 field crew FTEs to perform maintenance on the countywide Public Land Survey System (PLSS) and all field survey work for Salt Lake County projects. Additionally, field crews track construction and maintain/protect the PLSS on UDOT and municipal (23 municipalities) projects.
 - ▶ The County Surveyor's Office has 15 FTEs to manage office operations, statutory requirements (GIS mapping, permitting, County project management, etc.), and other collaborative services to County offices and the public.
- ▶ The Surveying / Engineering job market continues to be highly competitive. Salary surveys reflect wages have steadily increased due to demand.
- ▶ There continues to be a shortage of skilled technicians and professionals. This causes wages to rise, adding to the difficulties related to recruiting and retention of employees.

BUDGETING

2024 Projected Budgeting Consideration

- ▶ Proposed Budget Requests include:
 - ▶ \$1.5K for Computer upgrades and supplies
 - ▶ \$16K due to rate increases/inflation
 - ▶ \$12K for 2 Copiers (replacing 12-year-old copiers)
 - ▶ TOTAL REQUESTS: \$29,760

2024 Proposed Requested Budget - \$4,018,000

Proposed Revenue

- ▶ 2024 Projected Revenue \$443,500 vs. 2023 Projected Revenue \$261,916

