



# Intermountain Healthcare

Helping people live the healthiest  
lives possible®

## Wasatch Canyons Rebuild Salt Lake County Council November 8

### **Welcome, Introductions & Overview:**

Alan Dayton, Vice President Government Relations

### **Primary Promise & Wasatch Canyons Campus Rebuild:**

Amanda Choudhary, Pediatric Behavioral Health Services Director

### **Partnerships:**

David Flood, President Intermountain Foundation



# Our Primary Promise:



To Build the Nation's Model  
Health System for Children





Pediatric Research  
\$40 million



Cancer Center  
\$20 million



Behavioral Health  
\$20 million



NICU  
\$40 million



Teen-To-Adult Care  
\$20 million



Network of Care  
\$20 million



Fetal Center  
\$20 million



Healthy Kids  
\$20 million



New Children's Hospital  
\$300 million

**Strengthen**

Primary Children's Hospital

**Address**

Emerging Needs

**Extend**

Pediatric Excellence

**Primary Promise**  
**Minimum Campaign Target:**  
***\$300 million+***

***Project Cost:***  
***\$600 million+***



Pediatric Behavioral  
Health

  
Intermountain<sup>®</sup>  
Primary Children's Hospital

  
100

## Suicide Rate among 0 - 17 Year-Olds: Utah vs. U.S.

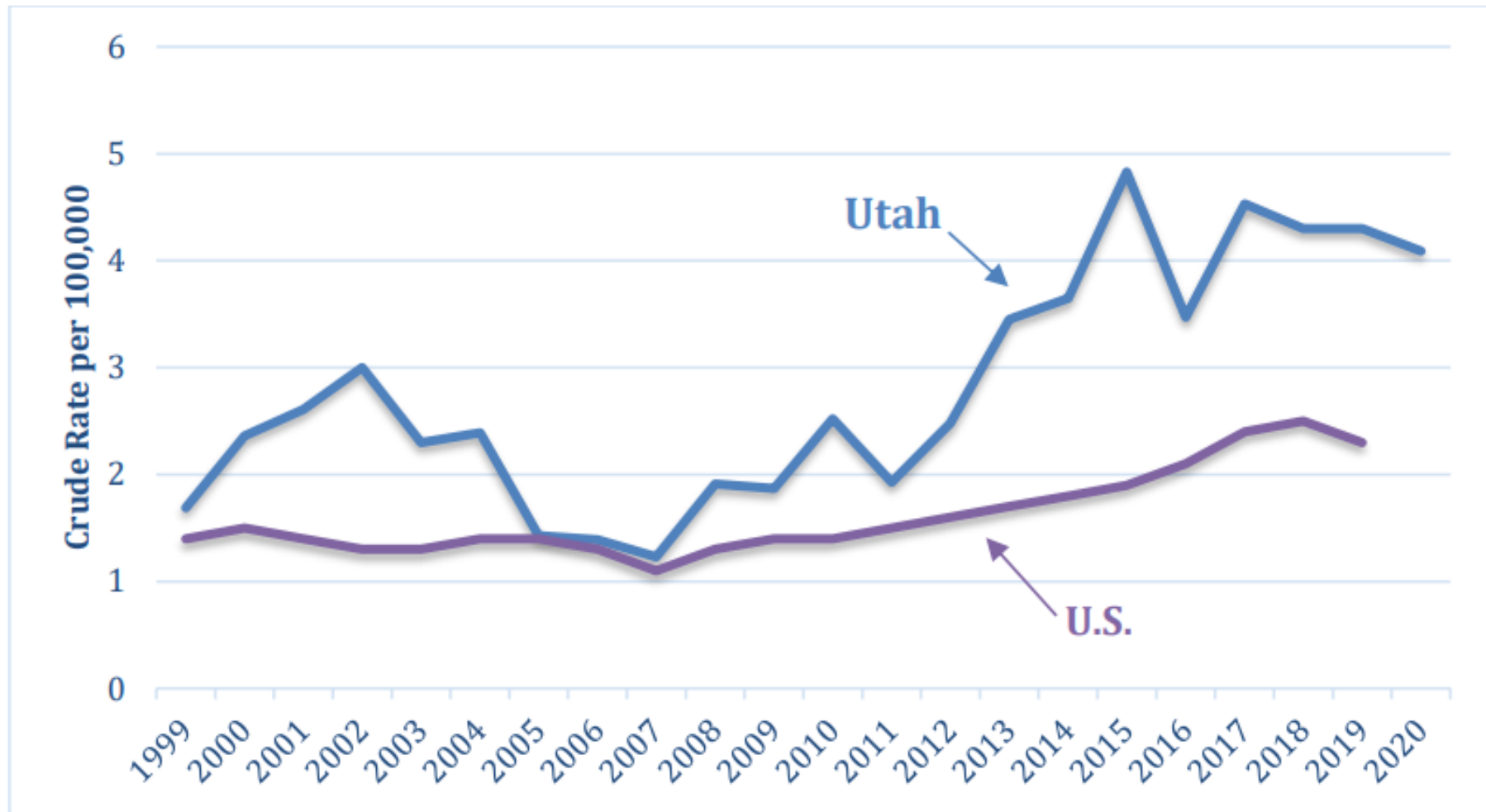


Figure 1. Suicide among 0 to 17 year-olds by crude rate in Utah, 1999 to 2020

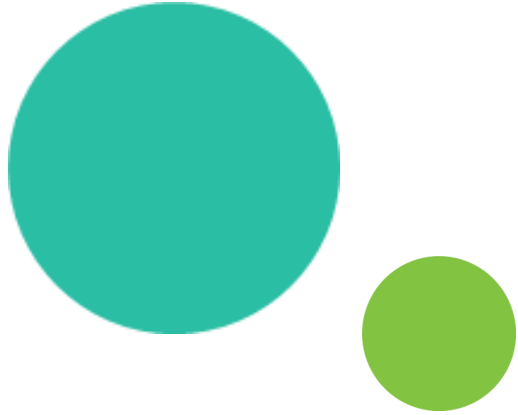


## The **Crisis** in Adolescent & Child Mental Health



100

- **Two youth** are treated for suicide attempts every day in Utah.
- **Highest Youth Hospitalization Rates for Suicide Attempts:** Glendale, Ben Lomond, South Salt Lake, St. George, and Washington County
- **Highest Youth ED Visit Rates for Suicide Attempts:** West Jordan, Cedar Valley, Kearns, Murray West, and Midvale
- Intermountain Healthcare's emergency departments have seen a **300% increase in pediatric mental health crisis** in the past 10 year



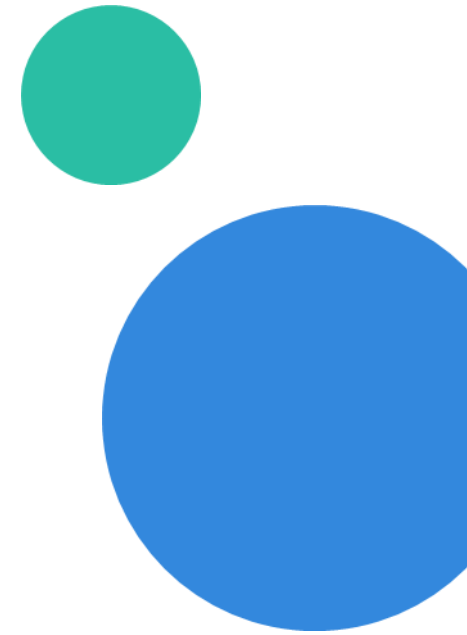
Nearly **20% of adolescents** in Utah experience a mental health illness

**60%**

of Utah's depressed youth ages 12-15 go untreated for their depression

There are only **6 child psychiatrists for every 100,000 children** in Utah. The national average is approximately twice that.

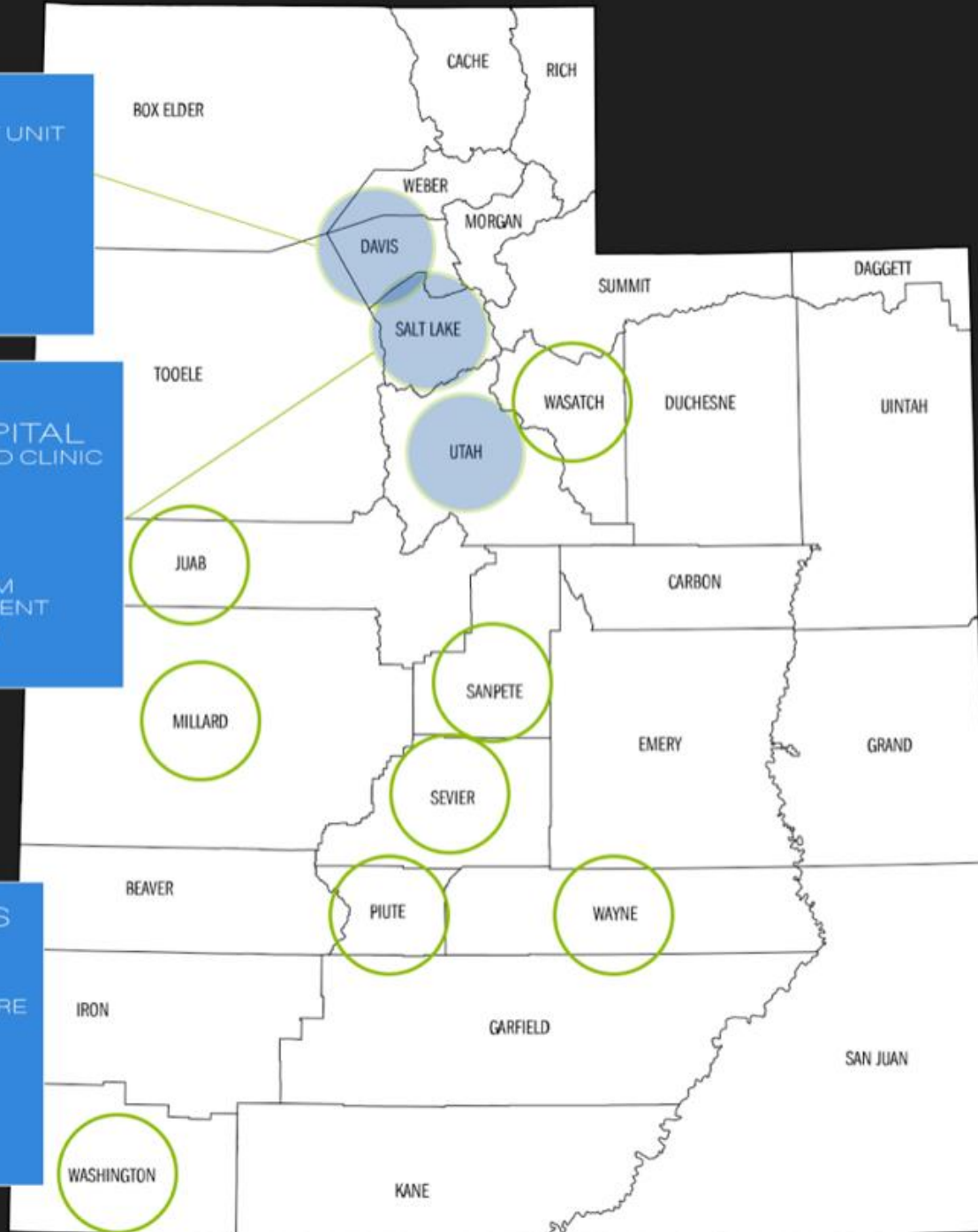
# Where to access Primary Children's Behavioral Health Services



**OGDEN**  
MCKAY-DEE HOSPITAL - INPATIENT UNIT  
SUMMIT DAY TREATMENT

**SALT LAKE CITY**  
PRIMARY CHILDREN'S HOSPITAL  
MED/PSYCH CONSULT LIAISON SERVICE AND CLINIC  
CRISIS TEAM  
**TAYLORSVILLE**  
**WASATCH CANYONS**  
INPATIENT UNIT  
PARTIAL HOSPITALIZATION PROGRAM  
CHILD AND ADOLESCENT DAY TREATMENT  
INTENSIVE OUTPATIENT PROGRAM  
OUTPATIENT CLINIC

**STATE WIDE COLLABORATIONS**  
ST GEORGE CHILD PSYCHIATRY  
UTAH VALLEY CHILD PSYCHIATRY  
MCKAY-DEE CHILD PSYCHIATRY  
MENTAL HEALTH INTEGRATION IN PRIMARY CARE







**The Leading Edge  
of Care in  
Pediatric  
Behavioral Health  
Care**

**100**



The new Primary Children's Wasatch Canyons campus will transform how we provide care:

- Expanded access to crisis services
- Outpatient space designed for more IOP, day treatment, and groups
- Inpatient unit designed to manage youth with autism and other specific needs
- Family centered behavioral health care

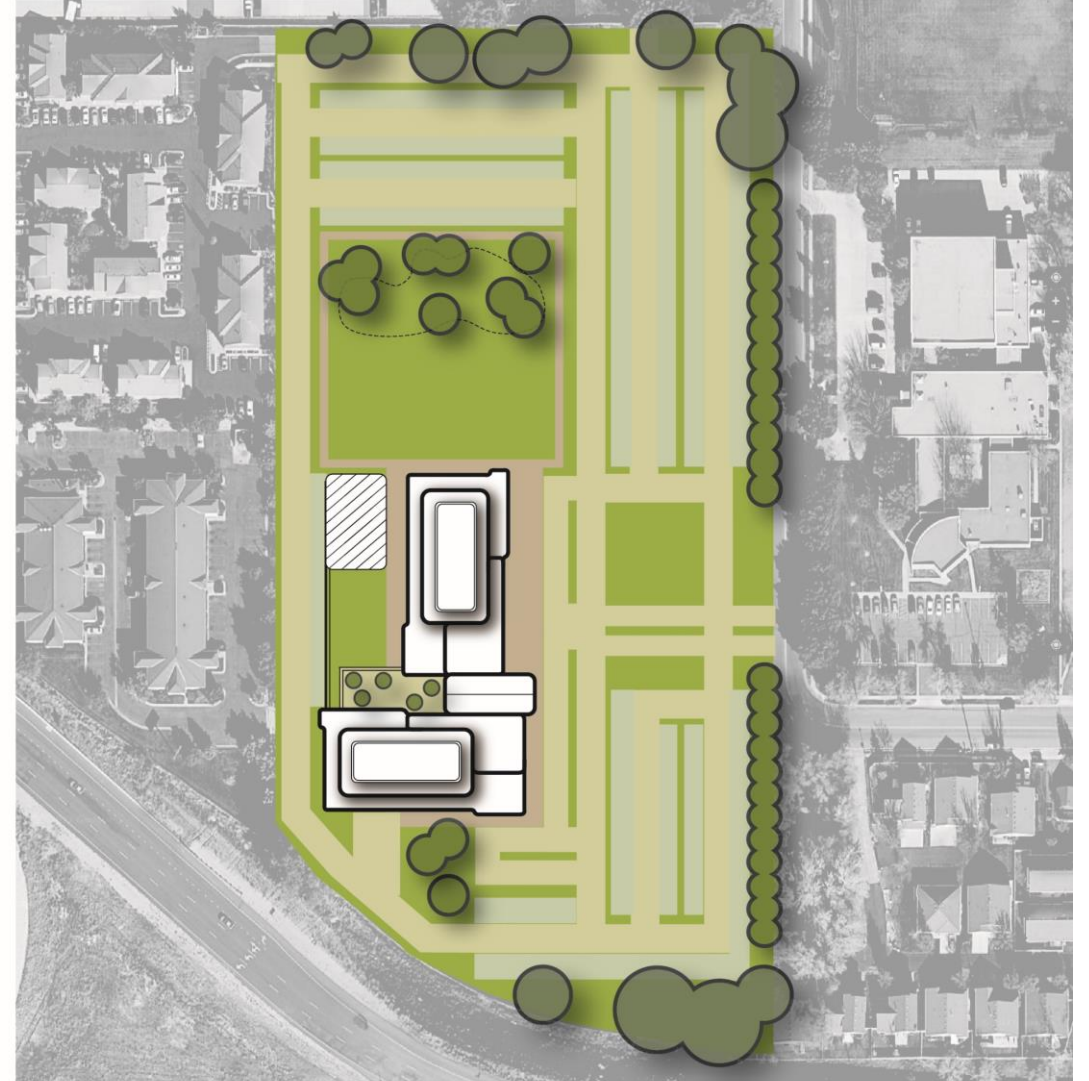
# Current Campus



Current

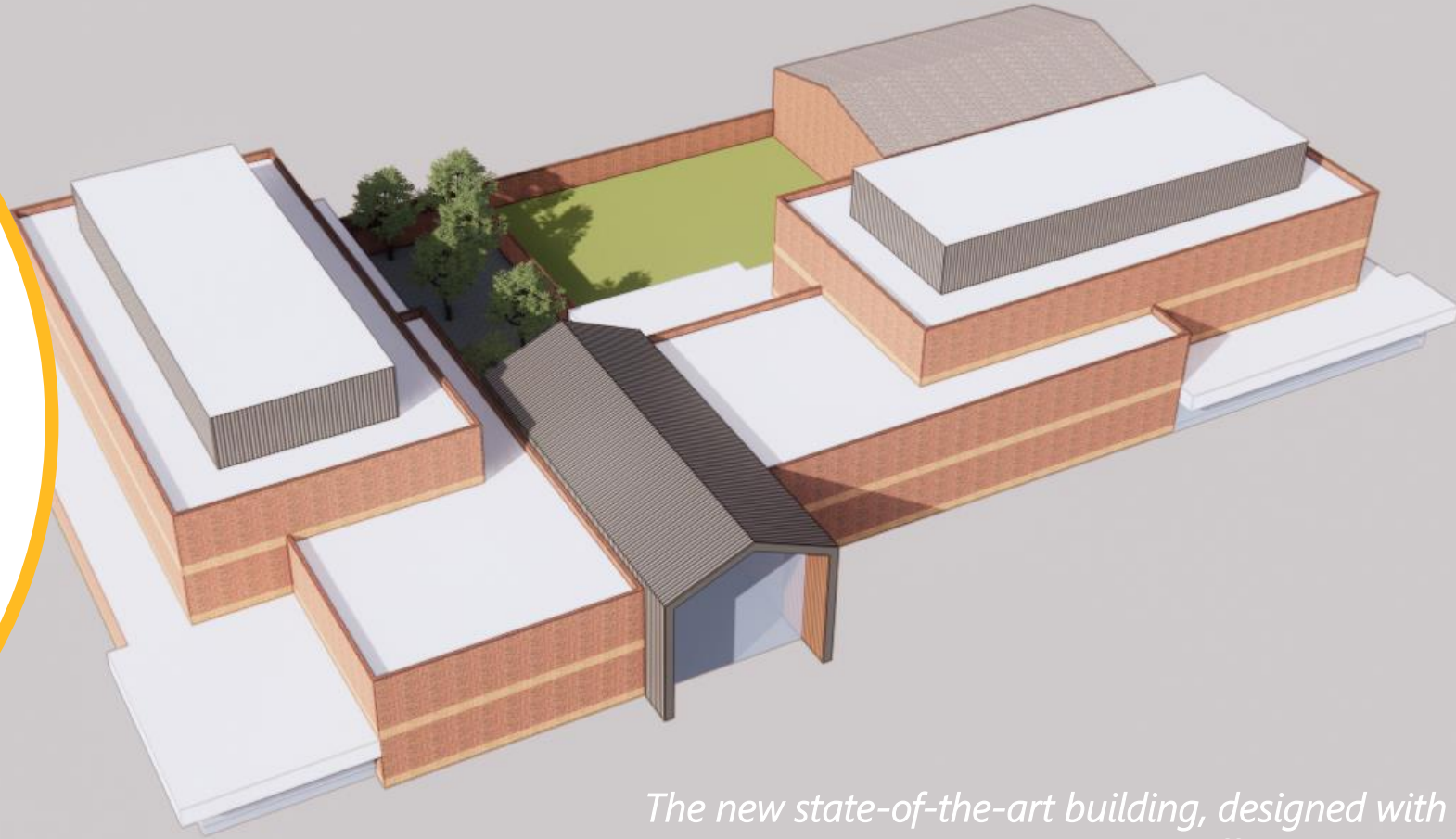


Proposed



**Coming up:  
Primary Children's  
Wasatch Canyons  
Campus  
Replacement**

**100**

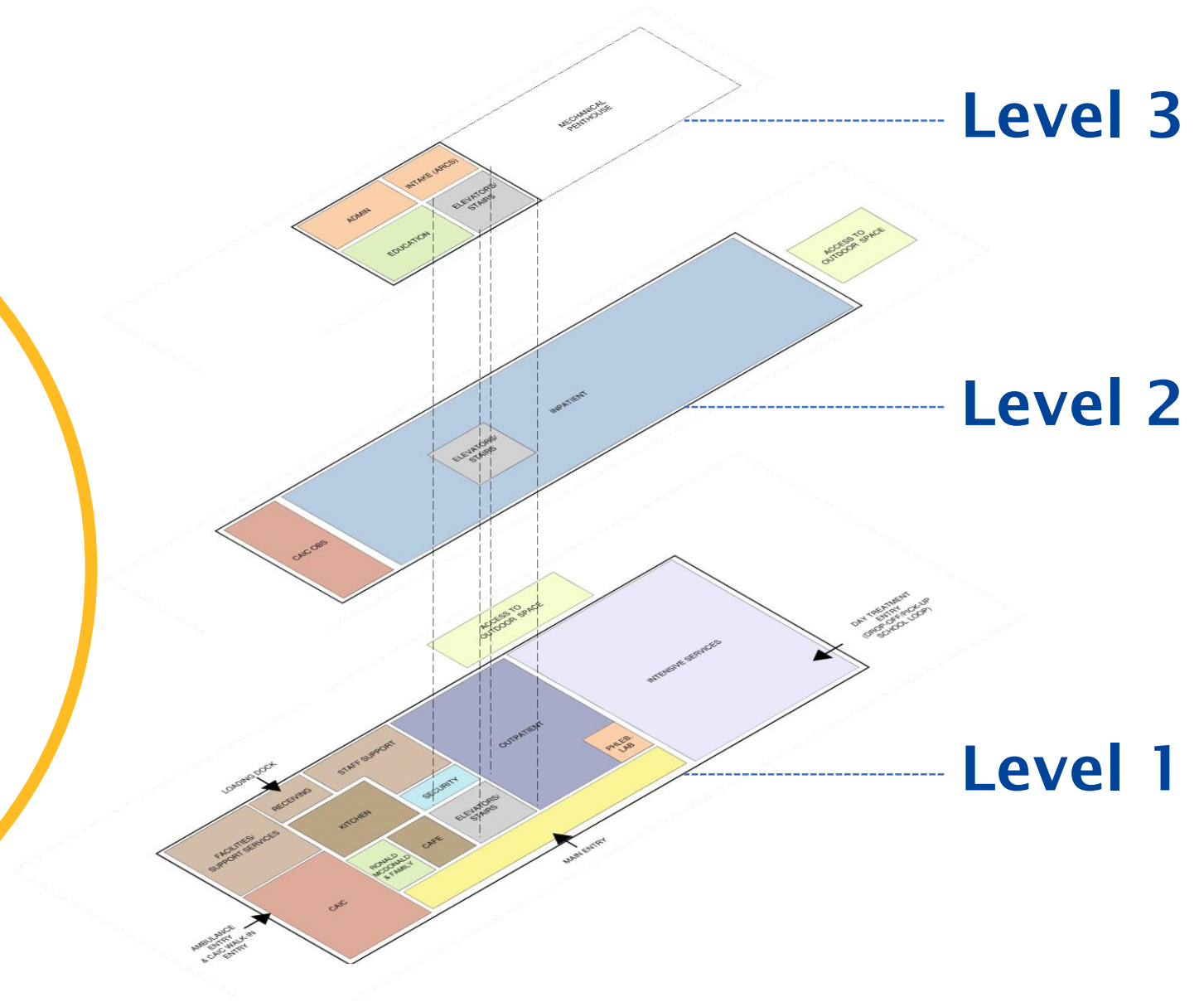


*The new state-of-the-art building, designed with both space and operational efficiencies, will reduce overall energy consumption with energy efficient system and sustainable design thinking.*

*Design in Progress: Rendering for Illustrative Purposes ONLY*

# Coming up: Primary Children's Wasatch Canyons Campus Replacement

100



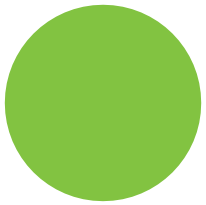
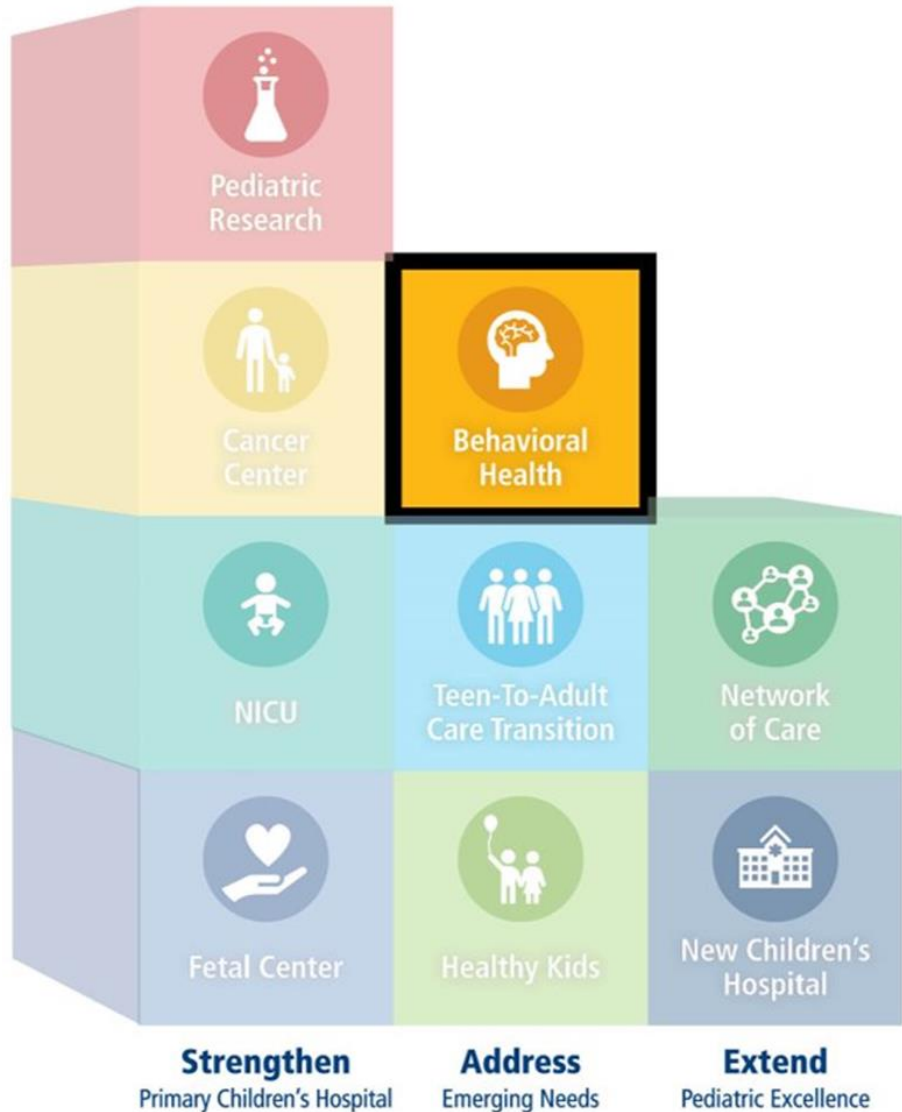


**Coming up:  
Primary Children's  
Wasatch Canyons  
Campus  
Replacement**



**100**

- Consolidating from 7 buildings on campus to 1
  - Approx. 100,000 sq ft
- 



# Intermountain/State Partnership

