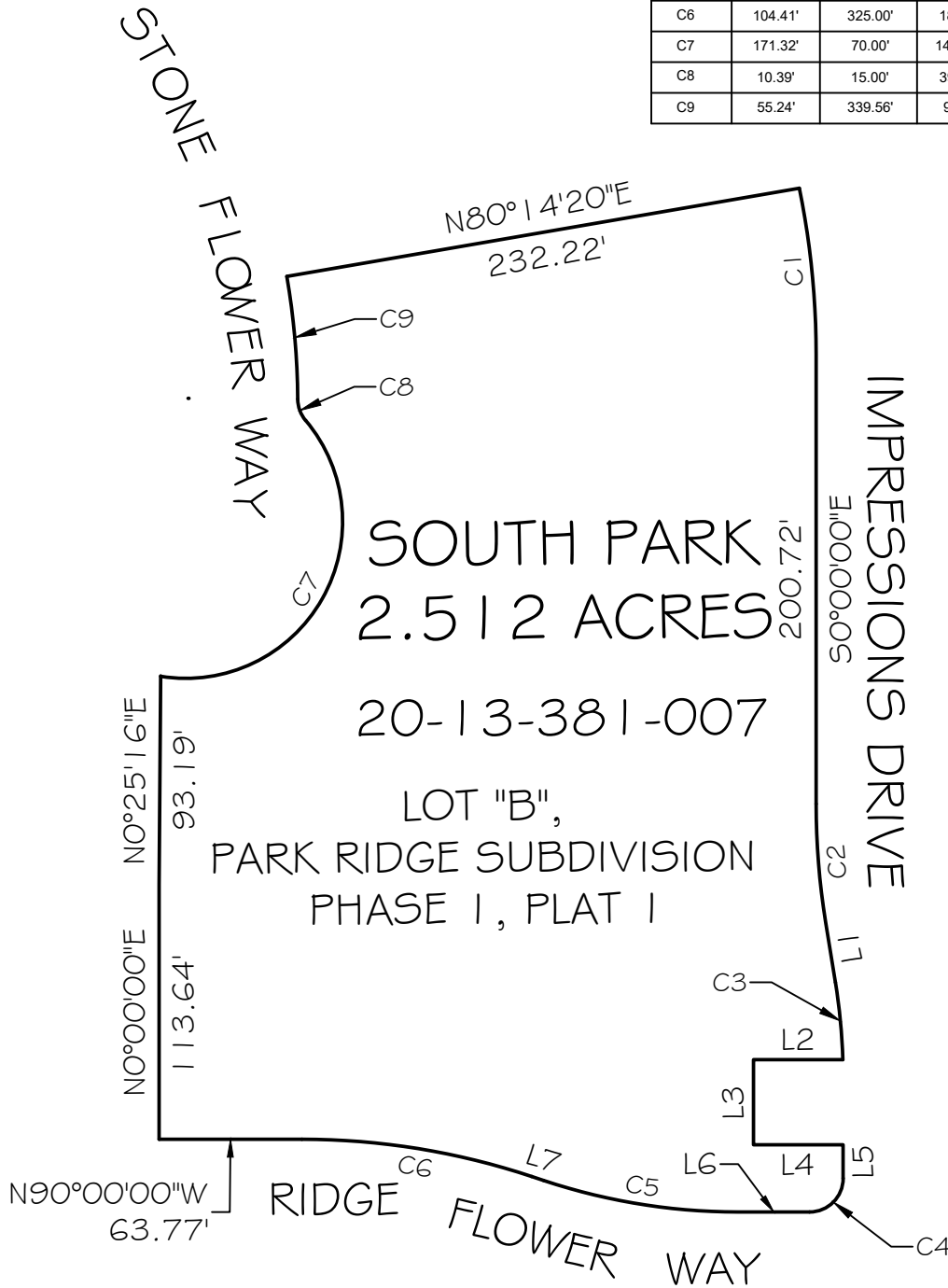


EXHIBIT " _ "

CURVE TABLE					
CURVE #	LENGTH	RADIUS	DELTA	CHD BRG	CHD LEN
C1	74.65'	370.00'	11°33'36"	S 5° 46' 48" E	74.52'
C2	28.85'	325.00'	5°05'09"	S 2° 32' 35" E	28.84'
C3	34.68'	270.00'	7°21'36"	S 5° 29' 06" E	34.66'
C4	23.56'	15.00'	90°00'00"	S 45° 00' 00" W	21.21'
C5	88.35'	275.00'	18°24'24"	N 80° 47' 48" W	87.97'
C6	104.41'	325.00'	18°24'24"	N 80° 47' 48" W	103.96'
C7	171.32'	70.00'	140°13'50"	N 29° 59' 07" E	131.65'
C8	10.39'	15.00'	39°41'21"	N 20° 17' 09" W	10.18'
C9	55.24'	339.56'	9°19'13"	N 5° 06' 04" W	55.18'

LINE TABLE		
LINE #	LENGTH	BEARING
L1	27.45'	S 9° 09' 54" E
L2	39.87'	S 90° 00' 00" W
L3	38.00'	S 0° 00' 00" W
L4	40.00'	N 90° 00' 00" E
L5	15.00'	S 0° 00' 00" E
L6	31.90'	N 90° 00' 00" W
L7	5.59'	N 71° 35' 36" W



Scale in Feet
1"=80'

Prepared: August 31, 2022

SOUTH PARK
6009 S. STONE FLOWER WAY
QUITCLAIM DEED - 4102:Q

Prepared for:
Salt Lake County Real Estate

Section 13, T. 2S., R. 2W., S.L.B.&M.
Work Order No. W071422014

Drawn by: CJL
Checked by: SVK

Prepared by the Office of:
Reid J. Demman, P.L.S.
Salt Lake County Surveyor

2001 S. State St. #N1-400
Salt Lake City, Utah 84114-4575
(385) 468-8240

