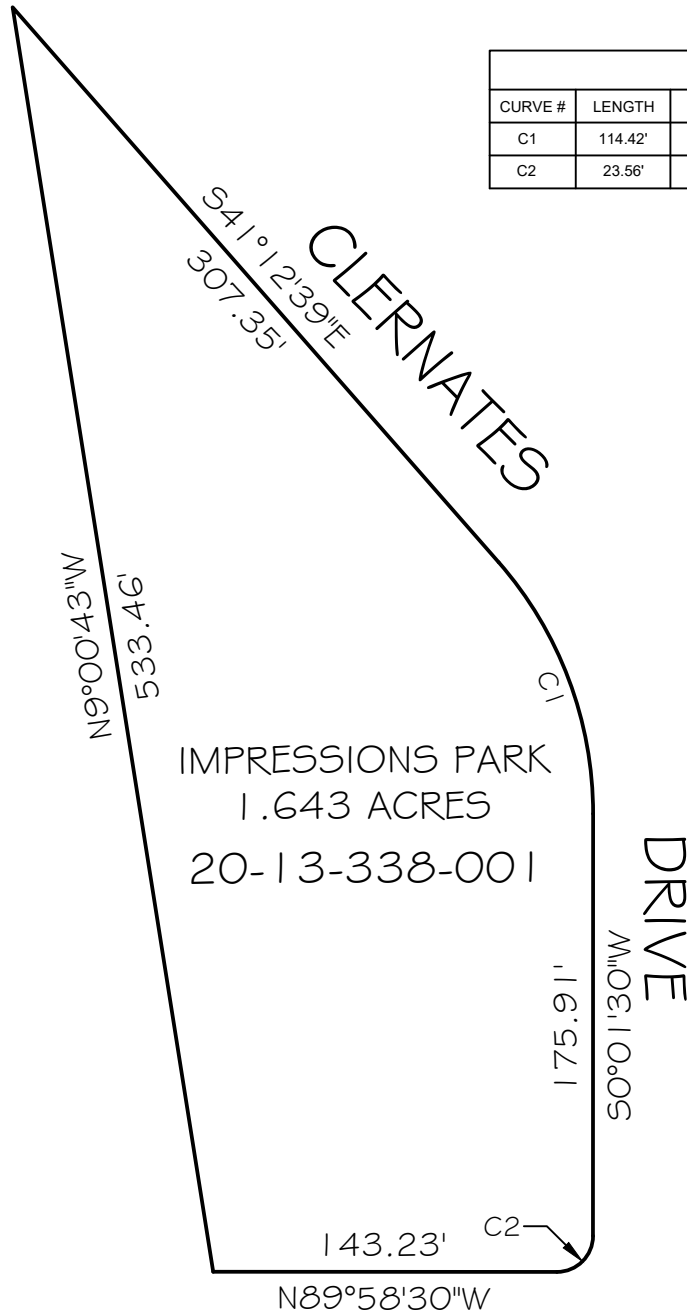


EXHIBIT " _ "

LOT 251,
IMPRESSIONS SUBDIVISION, PHASE 2

CURVE TABLE					
CURVE #	LENGTH	RADIUS	DELTA	CHD BRG	CHD LEN
C1	114.42'	158.99'	41°14'09"	S 20° 35' 35" E	111.97'
C2	23.56'	15.00'	90°00'00"	S 45° 01' 30" W	21.21'




6200 SOUTH



Scale in Feet
1"=80'

Prepared: September 2, 2022

	IMPRESSIONS PARK 6134 S. CLERNATES DRIVE QUITCLAIM DEED - 4090:Q		Prepared by the Office of: Reid J. Demman, P.L.S. Salt Lake County Surveyor 2001 S. State St. #N1-400 Salt Lake City, Utah 84114-4575 (385) 468-8240
	Prepared for: Salt Lake County Real Estate		
	Section 13, T. 2S., R. 2W., S.L.B.&M. Work Order No. W071422014	Drawn by: CJL Checked by: SVK	