

MILESTONE

TRANSITIONAL LIVING PROGRAM EXPANSION

MILESTONE MISSION

Salt Lake County Youth Services Milestone Transitional Living Program (TLP) assists in ending the cycle of homelessness and dependency by helping young adults become self-sufficient through access to safe housing, stable employment and connections to ongoing support and resources. Milestone TLP serves up to 19 young adults at a time ages 18 to 21 who are experiencing homelessness in Salt Lake County. With this expansion, Milestone now has an additional 18 beds to serve up to 37 young adults.

WHAT IS MILESTONE?

- Transitional living program for youth experiencing homelessness
- Staffing includes a Program Manager, Therapists, Case Managers, and House Managers
- Four homes include 3 in Sandy and 1, a four-plex, in West Valley City
- Young adults can stay in the program for up to 18 months; average length of stay is 9-11 months
- Collaborative model is focused on self-sufficiency through education and employment
- Trauma Informed Care model
- Utilizes best practices



MILESTONE SUCCESSES

- 2012: Milestone opened with 2 homes housing 9 young adults
- 2016: Milestone added an additional home housing a total of 14 young adults
- 2020: Milestone expanded again with another home that included the case managers office housing a total of 19 young adults
- 2020: Milestone was recognized with an Achievement Award from the National Association of Counties (NACo)
- 2023: Milestone served 39 young adults
 - 20 youth exited the program
 - 80% were positive exits (housed and employed or in school)
- 2012-present: Milestone served more than 300 young adults
- 2015-2022: Of all positive exits (housed and employed or in school), 82% did not return to homelessness



MILESTONE IS A GOOD INVESTMENT,
SAVING MONEY AND LIVES

THE DATA

More than 100 youth “age out” of foster care in Utah every year



Within 2 years, 34%
are incarcerated
or experiencing
homelessness

50% have
higher rates of
mental illness
than their peers



74% of youth
who age out
live in poverty

Youth involved
in child welfare
services are 3-5
times more likely
to commit suicide



MILESTONE IS A GOOD INVESTMENT

The United States Interagency Council on Homelessness notes:

“People experiencing chronic homelessness cost the public between \$30,000 and \$50,000 per person per year through their repeated use of emergency rooms, hospitals, jails, psychiatric centers, detox, and other crisis services.”

None of these facilities are designed as long-term solutions for a youth experiencing homelessness, resulting in deeply detrimental emotional and physical trauma. In addition to reducing the financial burden to the public, Milestone helps prevent the risks and trauma that often comes from being unhoused. These risks can include human trafficking, criminal activity, and drug use.

“Milestone changed my life. I wouldn't ever ask to experience the events leading up to my move in, but I know I was meant to be here. Thank you, Milestone!”

-Milestone Participant

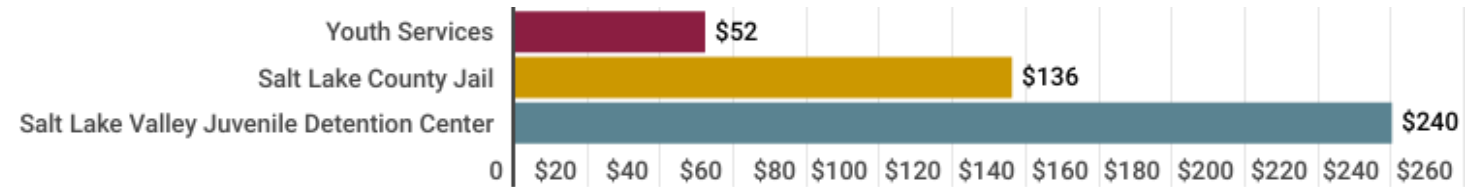
COST SAVINGS

Preventative information-
Milestone will serve an additional
25 participants per year.

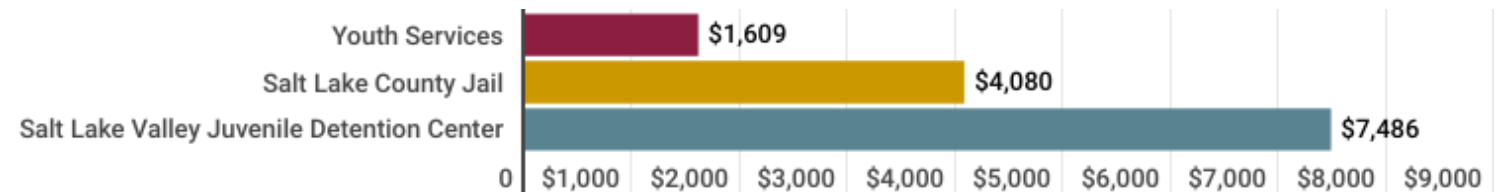
Based on The United States Inter-
agency Council on Homelessness,
Milestone will provide an average
cost savings of \$267, 275 to
\$767,275 per year to the public

COST COMPARISON FOR SALT LAKE COUNTY PER PERSON

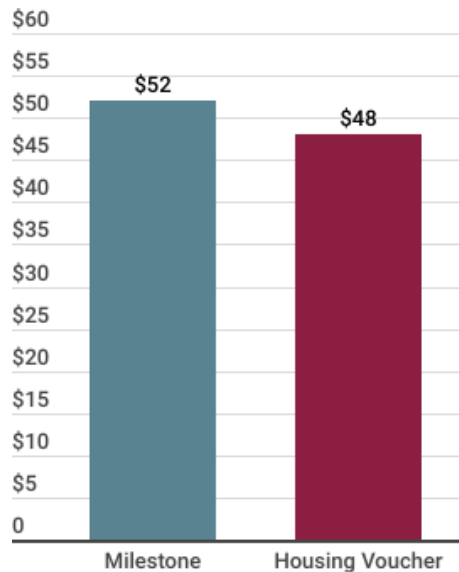
COST PER DAY



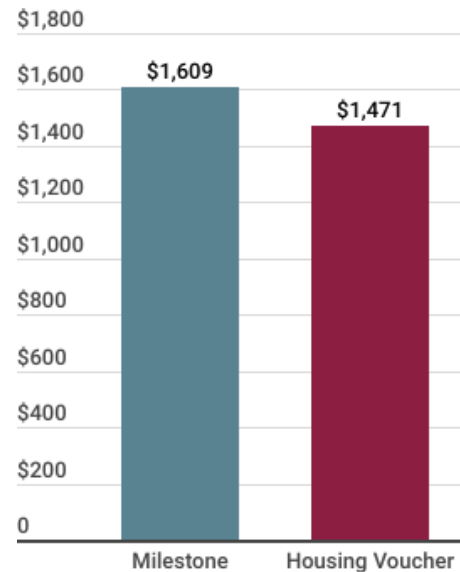
COST PER MONTH



MILESTONE COST COMPARED TO HOUSING CONNECT VOUCHER



COMPARISON PER DAY



COMPARISON PER MONTH

Housing Connect voucher includes:

- Housing – 1 bedroom apartment
- Assistance with required annual housing paperwork

Milestone includes:

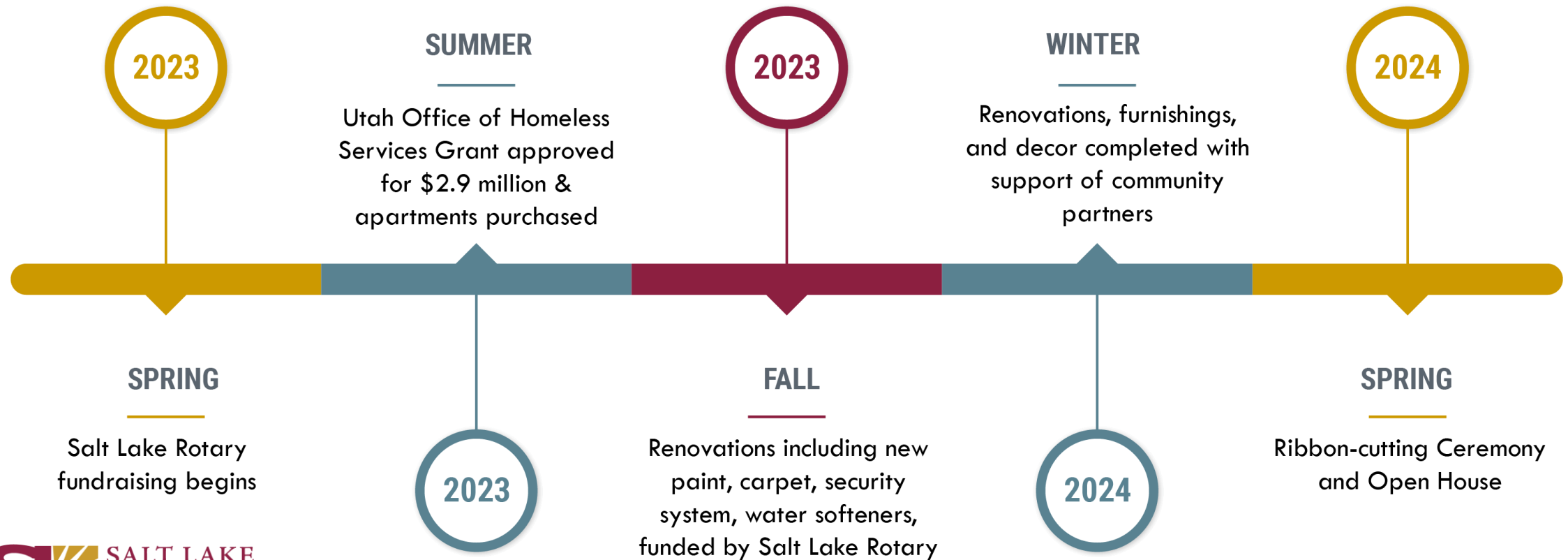
- Housing – 1 bedroom
- Case management (budget, employment, education, and housing)
- Counseling services (mental health assessment and individual as needed)
- Life skills groups
- Relationship groups (evidence-based Mind Matters curriculum)
- Community service projects

THE PARTNERSHIP

- Salt Lake Rotary fundraised over \$250,000 from private donors
- Salt Lake Rotary received a 2.9-million-dollar grant through the Utah Office of Homeless Services
- Salt Lake Rotary purchased The Highland House at 4230 S Highland Drive
 - 8 3-bedroom units (up to 18 young adults at a time)
 - Built in 2020
 - Staff offices and meeting space
 - Live-in house manager
- Salt Lake Rotary and Salt Lake County signed a no-cost 50-year lease agreement
- Salt Lake County Youth Services provides ongoing operational costs



PARTNERSHIP TIMELINE



The Milestone expansion operational budget is funded by strategic planning, difficult decisions, prudent fiscal management, and creative solutions.

2024 Milestone Expansion Budget

Personnel	\$404,002
- Program Manager	0.50
- Case Manager	1.00
- Therapist	1.00
- House Manager	1.00
Total FTE	3.50
Operations	\$78,717
Youth Services Funding	\$482,719

PARTNERSHIPS

Milestone TLP fully embraces the Trauma Informed Care model of community services and is in regular contact with health providers, mental health providers, social services, substance use treatment, education, employment, and welfare agencies.



THANK YOU

[SLCO.TO/MILESTONE](https://slco.to/milestone)

Mina Koplin, Section Manager

Carolyn Hansen, Youth Services Director

Kelly Colopy, Human Services Department Director