

COVID-19 HEALTH RESPONSE REPORT TO COUNTY COUNCIL

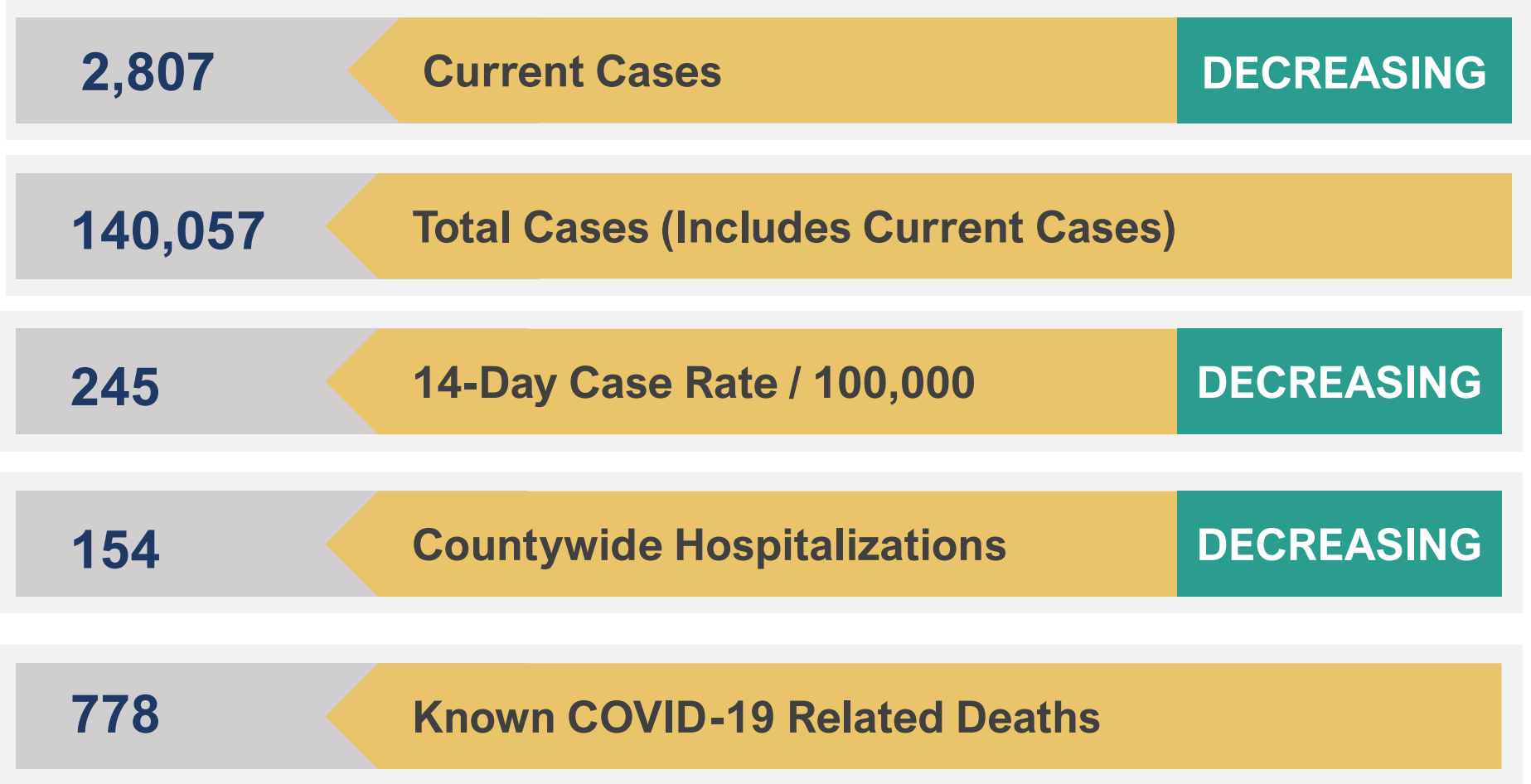
March 9, 2021

David Schuld

Salt Lake County COVID-19 Response and Recovery Coordinating
Officer

KEY NUMBERS

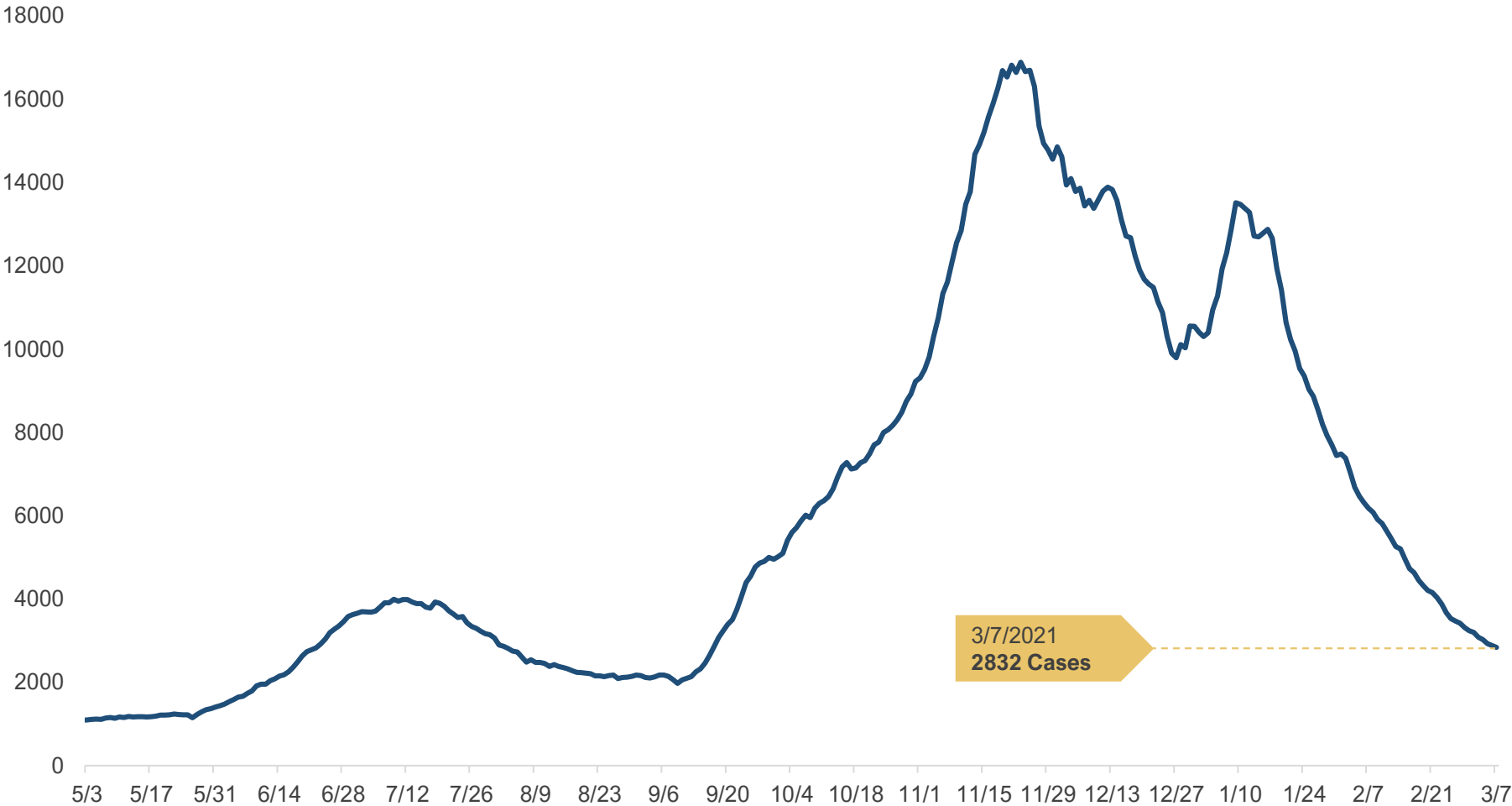
Key Numbers are for Salt Lake County only. Data presented follows best practices in reporting of epidemiology and present the number from the previous day.



Source: Salt Lake County Health Department, Utah Department of Health
Report from Salt Lake County's COVID-19 Response and Recovery Coordinating Officer

ACTIVE CASE CURVE

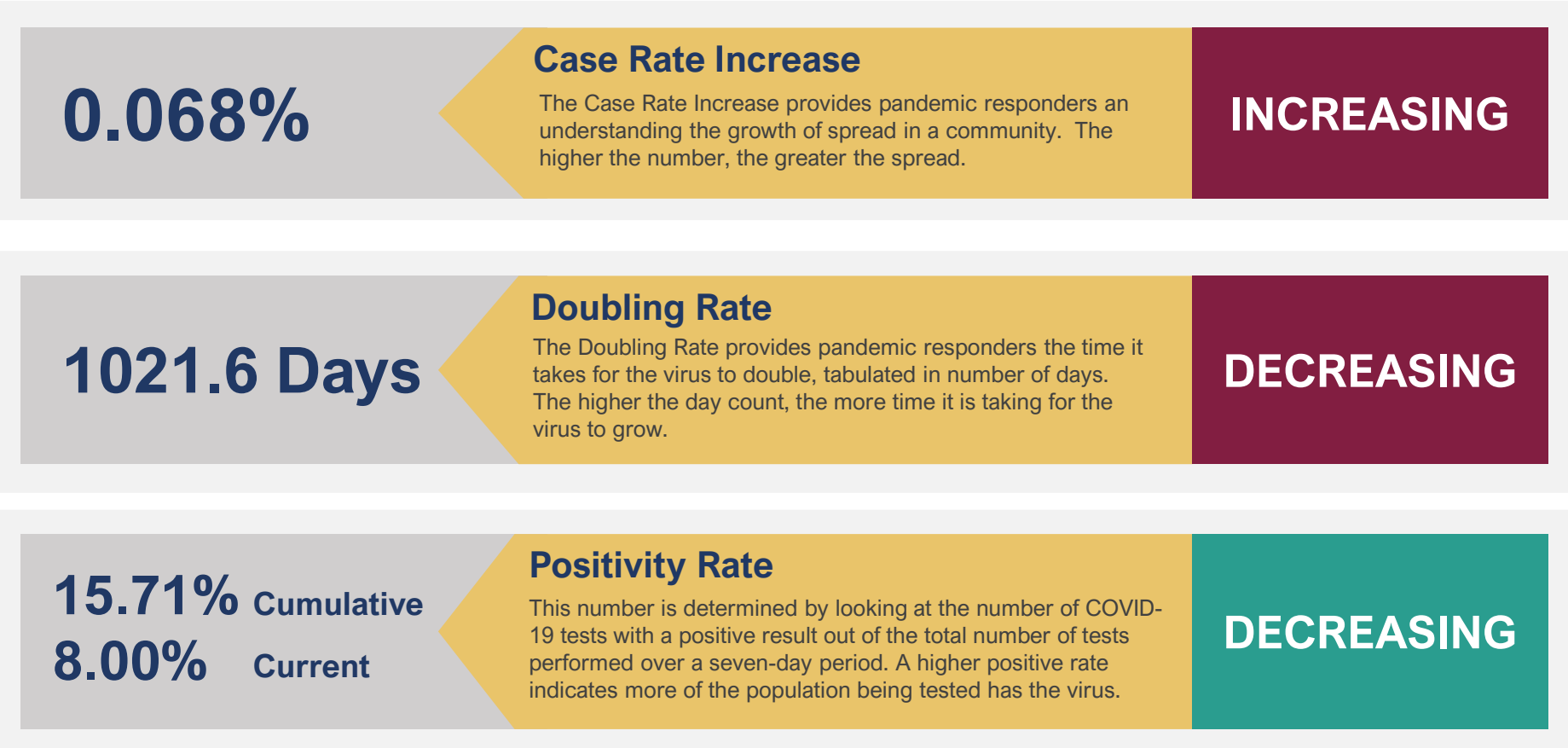
The Active Case Curve articulates the summation of the number of cases of individuals in Salt Lake County whose first positive laboratory test was reported within the last 14 days.



Source: Salt Lake County Health Department
Report from Salt Lake County's COVID-19 Response and Recovery Coordinating Officer

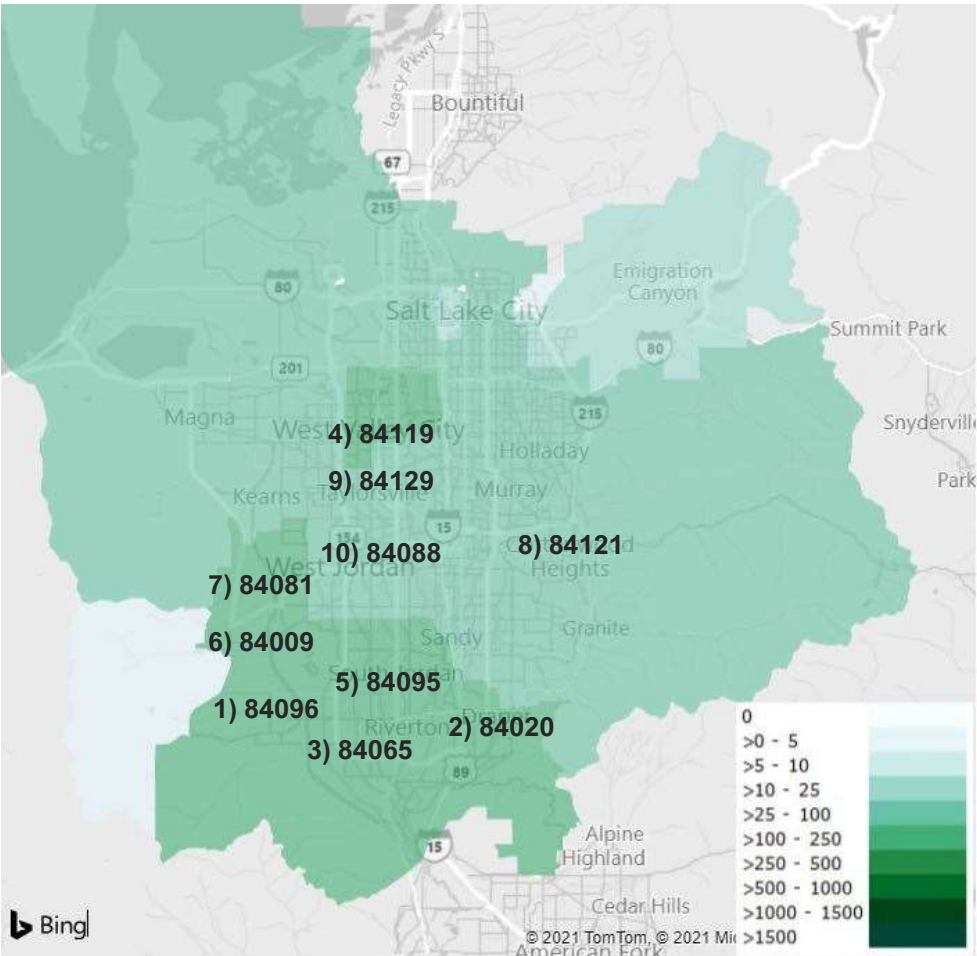
INFECTION SNAPSHOT

Infection Snapshot is for Salt Lake County only. Data presented follows best practices in reporting of epidemiology and present the number from the previous day.



ZIP CODE SURVEILLANCE

Slide provides the current cases (summation of cases for the last 14 days) for the top ten ZIP codes in Salt Lake County.



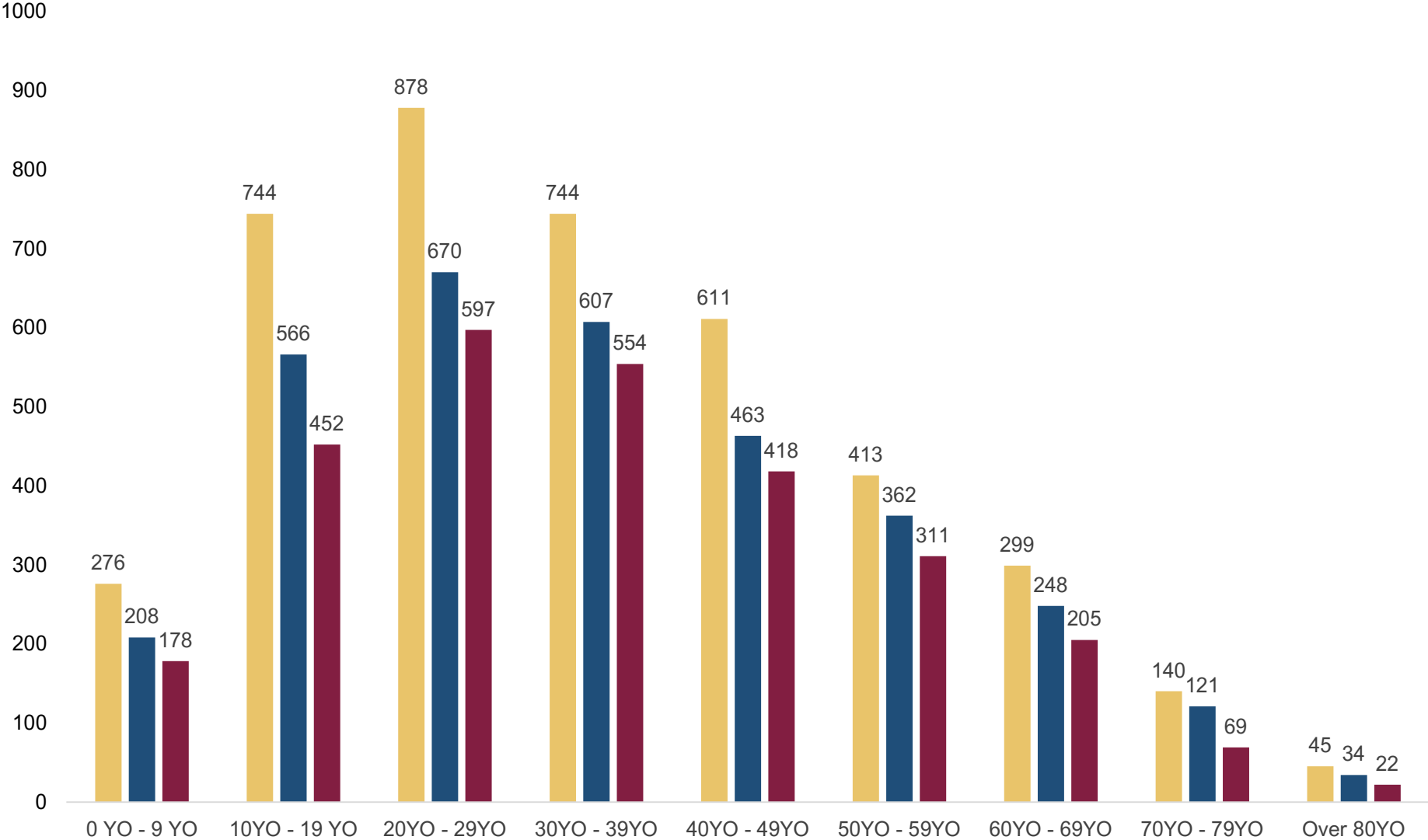
Rank	ZIP Code	7-Mar
1	84096	149
2	84020	136
3	84065	130
4	84119	113
5	84095	113
6	84009	106
7	84081	102
8	84121	95
9	84129	90
10	84088	87

Rank	ZIP Code	1-Mar
1	84096	172
2	84065	168
3	84020	167
4	84081	131
5	84095	128
6	84119	122
7	84088	119
8	84129	106
9	84121	106
10	84118	97

Source: Salt Lake County Health Department
 Report from Salt Lake County's COVID-19 Response and Recovery Coordinating Officer

CURRENT CASES BY AGE DISTRIBUTION

Slide provides the current cases (summation of cases for the last 14 days) for age groups (by decade) in Salt Lake County.



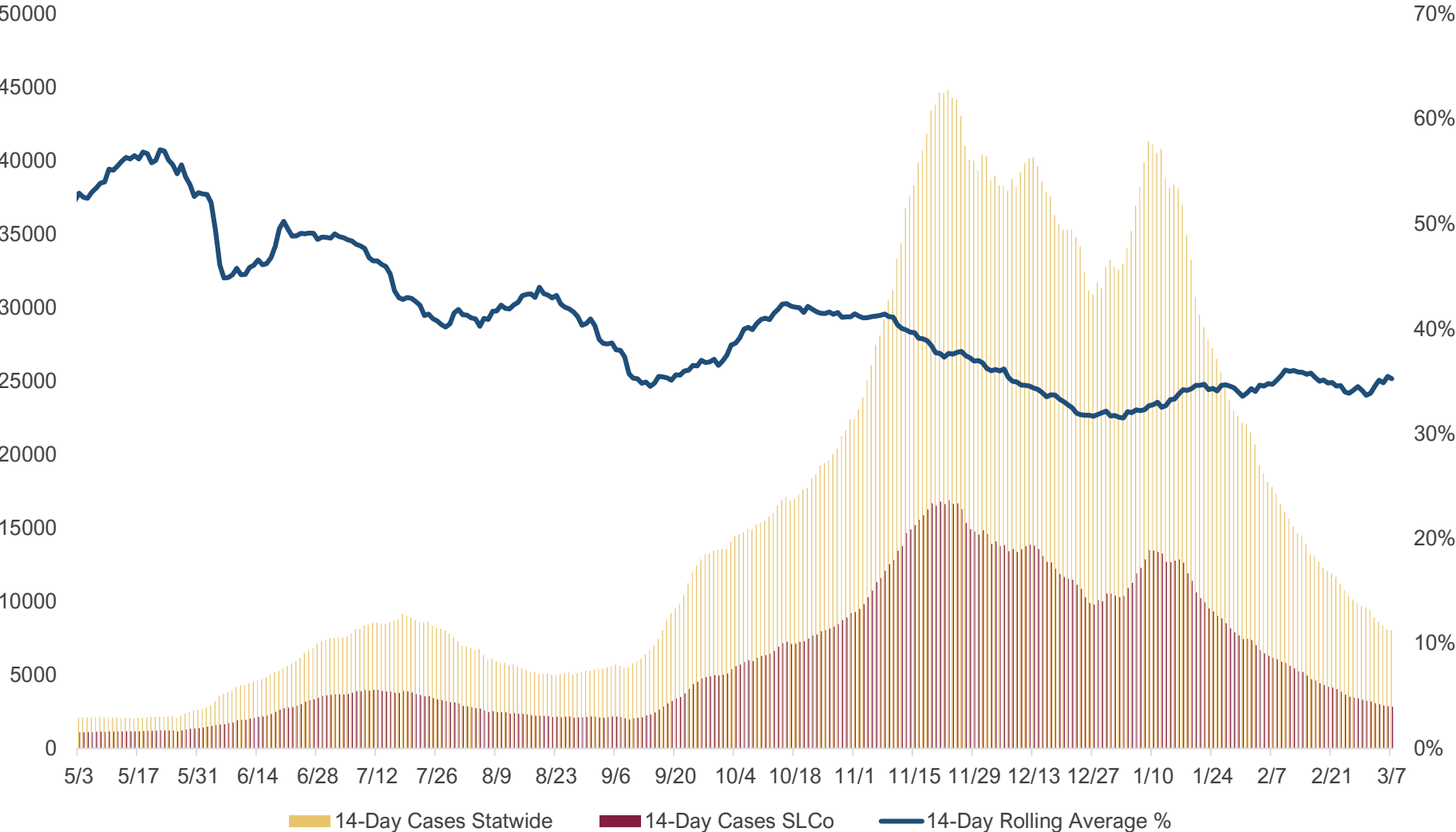
Source: Salt Lake County Health Department

Report from Salt Lake County's COVID-19 Response and Recovery Coordinating Officer



ROLLING 14-DAY COMPARISON

Provides information the rolling 14-day statewide and Salt Lake County case totals. Also included is the statewide percentage of cases for Salt Lake County.



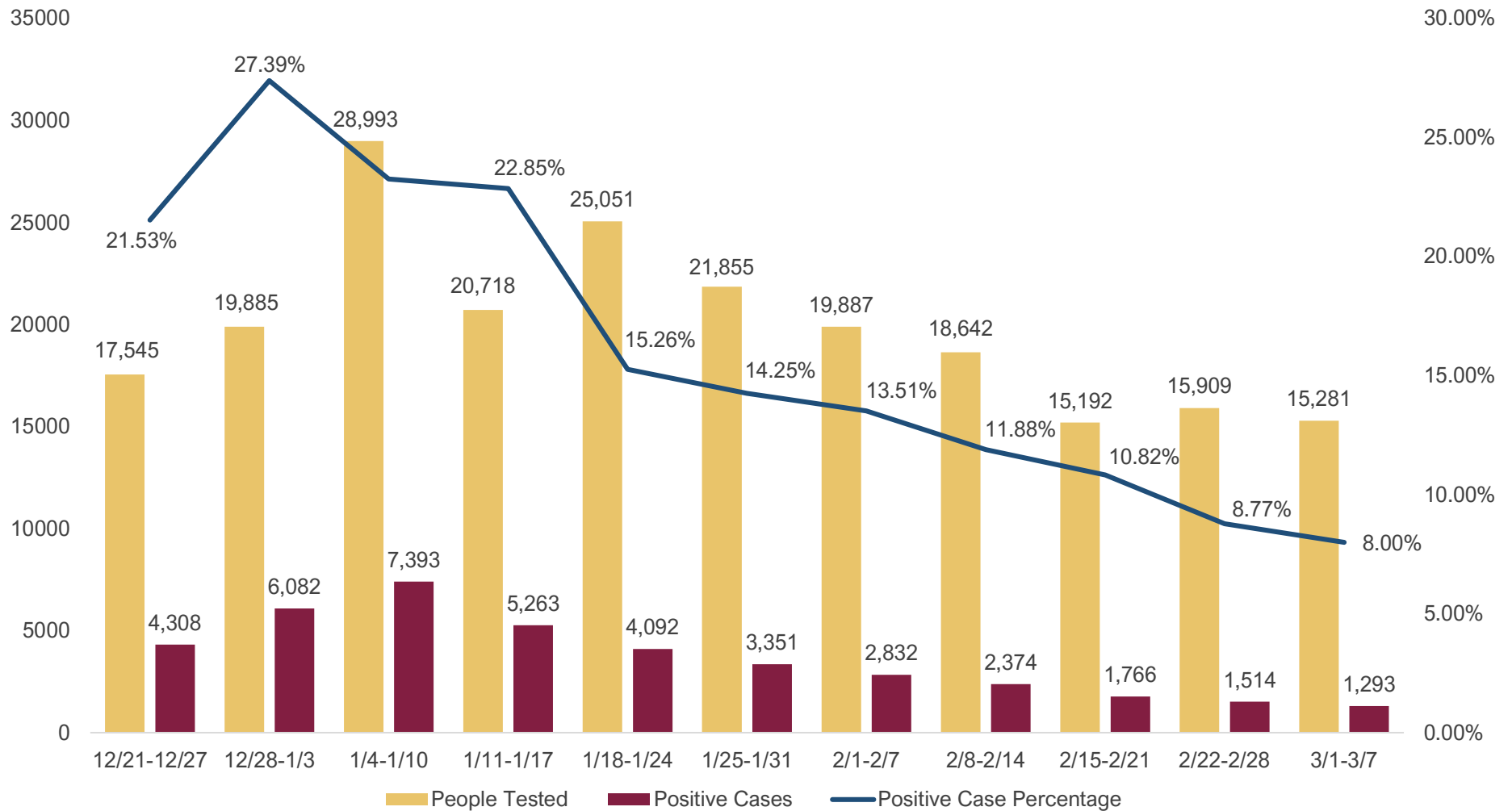
Source: State of Utah Public Dashboard

Report from Salt Lake County's COVID-19 Response and Recovery Coordinating Officer



TESTING ANALYSIS

Testing Analysis provides a week-over-week visualization of the number of people tested, number of positive cases, and positive test percentage. Numbers will fluctuate week over week as late reporting is entered into the database.

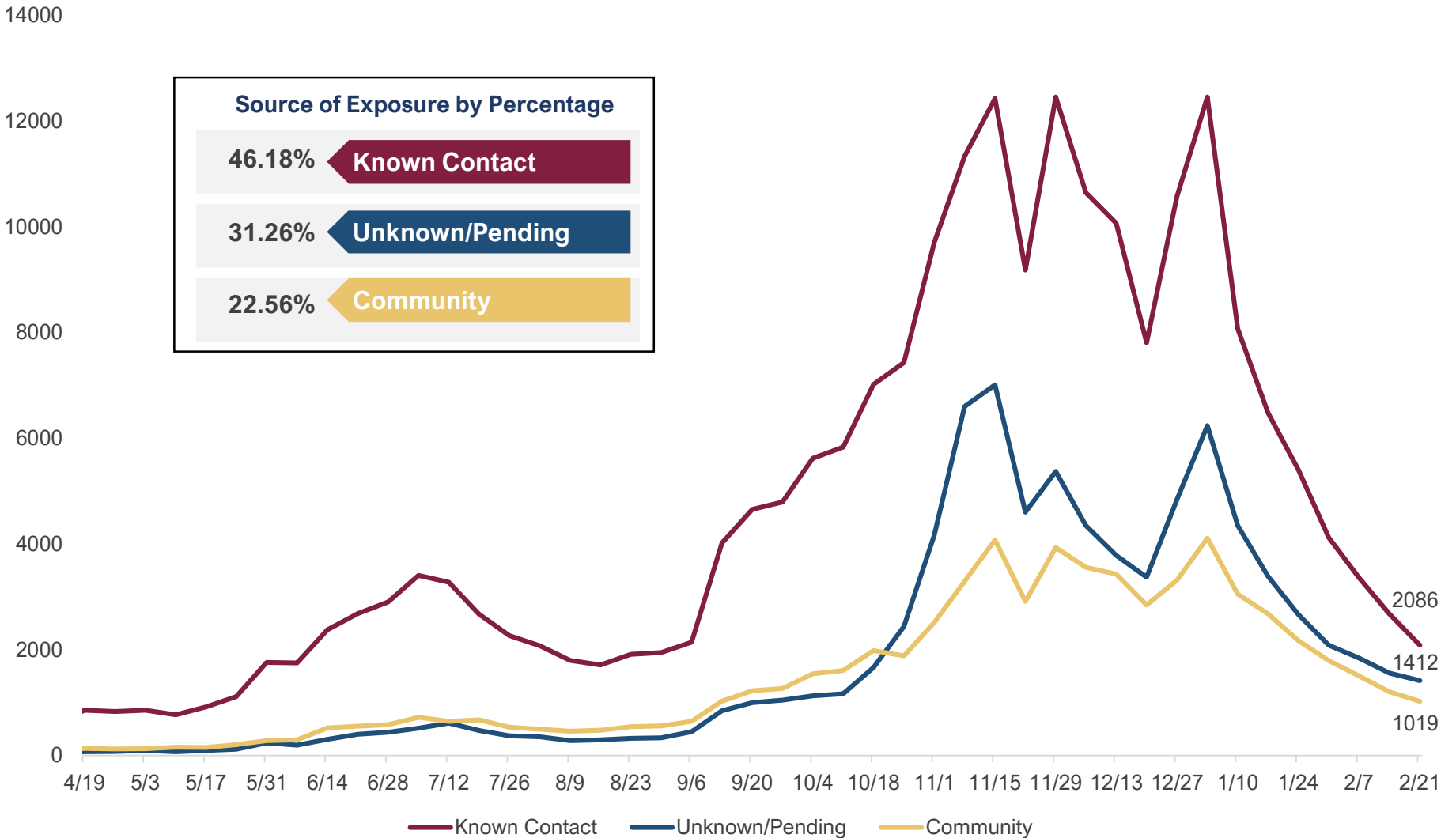


Source: Salt Lake County Health Department

Report from Salt Lake County's COVID-19 Response and Recovery Coordinating Officer

KNOWN VS COMMUNITY CASES

Provides information on the source of exposure for positive cases that have undergone tracing investigations. Number of cases identified across state. Cases with known contact vs community are identified by week.

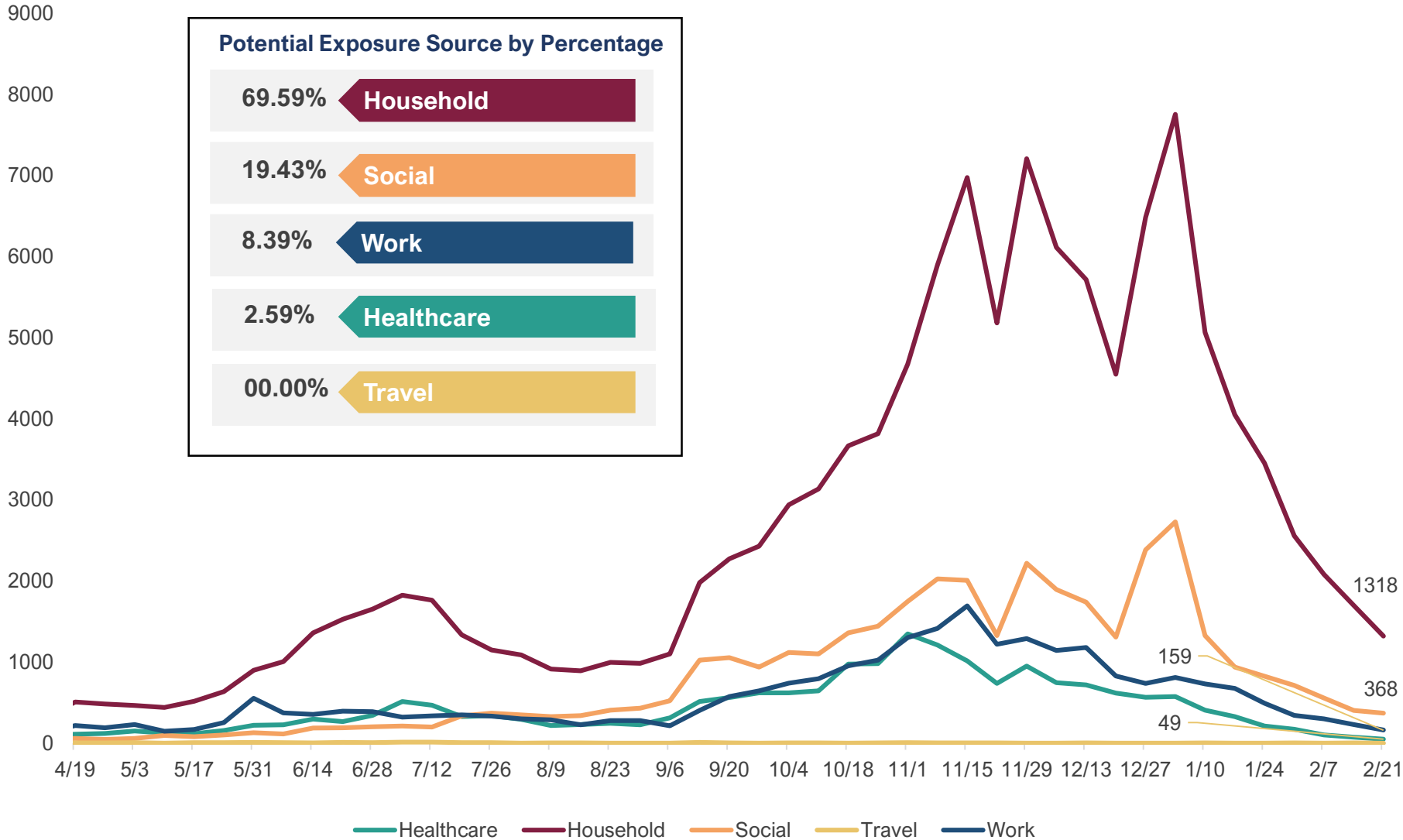


Source: State of Utah

Report from Salt Lake County's COVID-19 Response and Recovery Coordinating Officer

POTENTIAL EXPOSURE SOURCE

Potential exposure source as found out in tracing investigations are broken down in five areas: 1) Household, 2) Social, 3) Travel, 4) Work, and 5)Healthcare. Number of cases identified across state. Cases are identified by week.



Source: State of Utah

Report from Salt Lake County’s COVID-19 Response and Recovery Coordinating Officer