

Utah windstorm: How it ha it fits in with other extre

KSL.com News Sports Utah Travel BrandView TV Radio Video Obituaries Weather 81°

Avalanches, s traffic across

By Mike Anderson, KSL-TV and Cassidy Wilson, KSL.com
at 9:09 a.m.



Challenging, exhausting 24 hours for residents evacuated near the Sandhurst Fire

By Keren Nunez, KSL-TV | Posted - July 22, 2024 at 9:51 a.m.



2 photos 10

Save Story

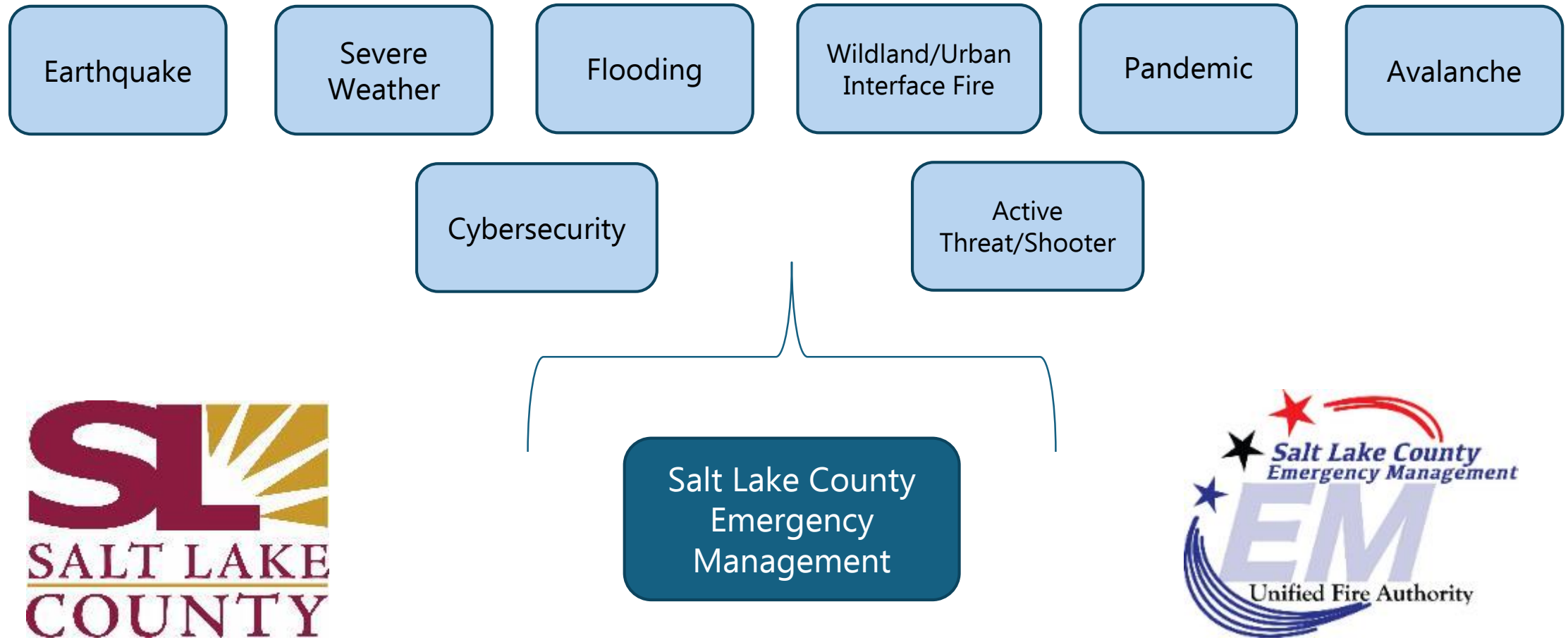
Sandhurst fire continues to burn near Ensign Peak; 0% contained
KSL TV

MOST VIEWED

1. 5-year-old killed after bounce house goes airborne during Maryland baseball game
2. Utah officials identify 51-year-old man missing in Willard Bay swimming incident

Decades-old explosives detonated in Holladay were inherited, found after man's death





**THE SALT LAKE COUNTY DIVISION OF EMERGENCY MANAGEMENT
SERVES OUR CITIZENS BY DIRECTING AND COORDINATING
RESOURCES FOR EVENTS, DISASTERS AND EMERGENCIES
THROUGH PREPARATION, PLANNING, MITIGATION, RESPONSE,
AND RECOVERY.
OUR FOCUS IS ON REGIONAL COORDINATION, SUPPORTING OUR
MUNICIPAL, STATE AND FEDERAL PARTNERS.**

What is Emergency Management?

The division responsible for the coordination of all activities related to any significant incident or event.

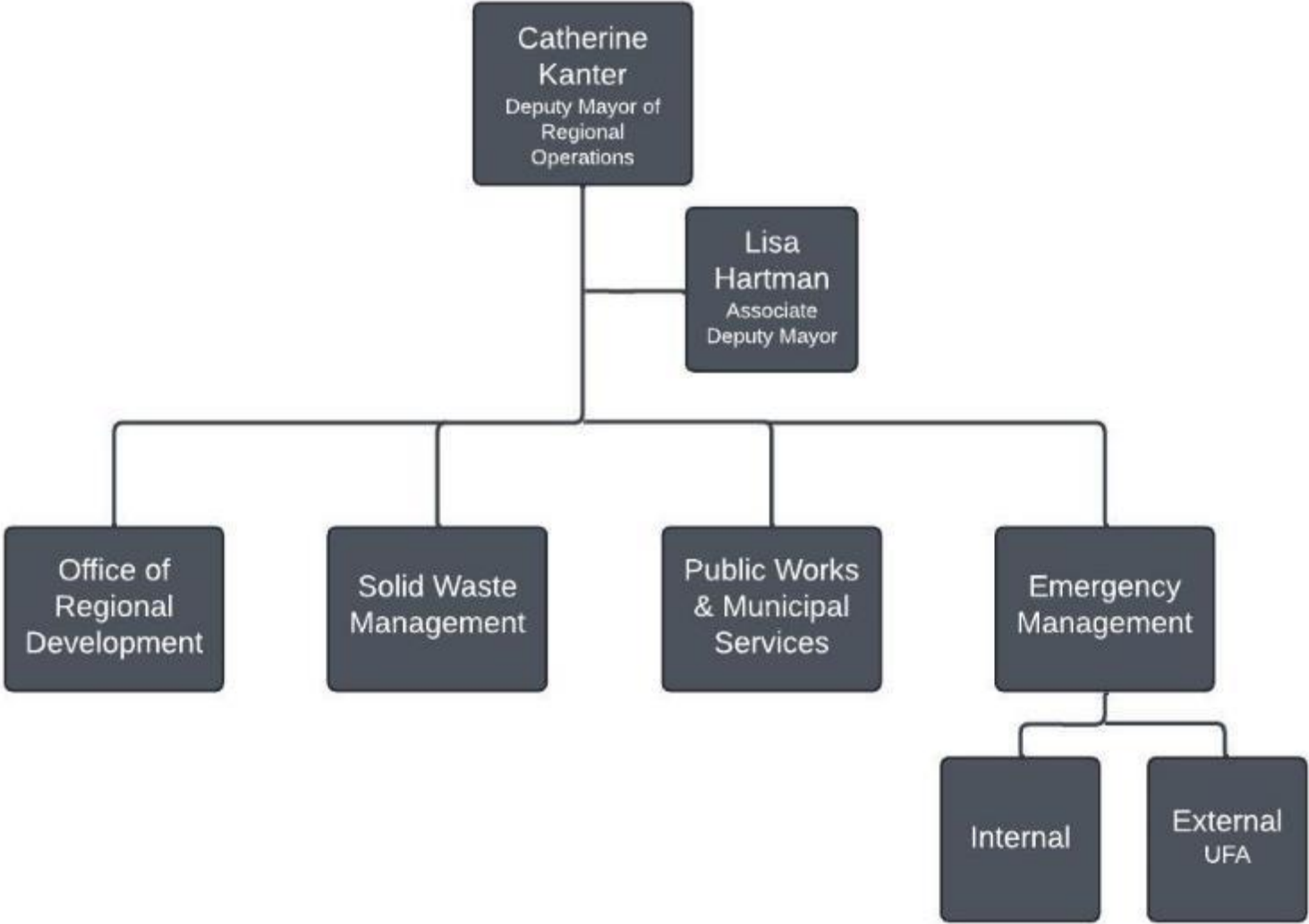
- coordination happens from the 10,000 ft. perspective and/or “beyond the scene tape”



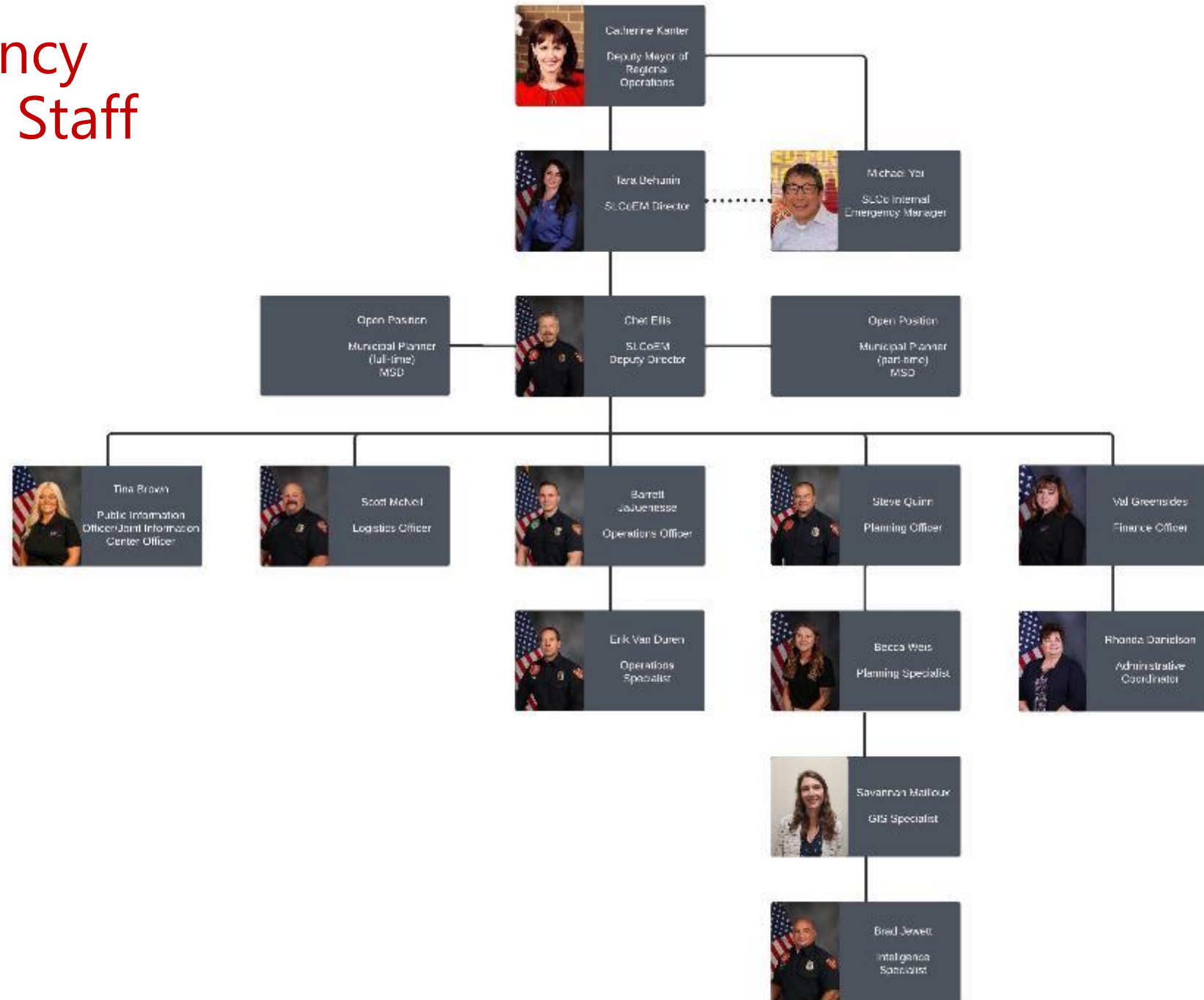
- emergency management response starts and ends at the local level



Salt Lake County Emergency Management



SLCo Emergency Management Staff



SLCo Overview

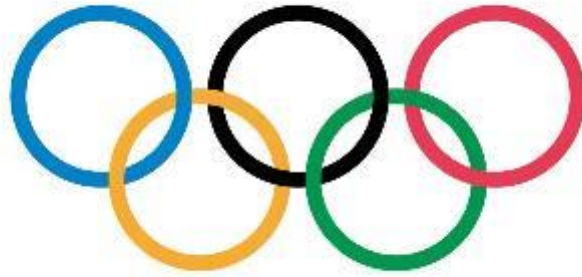
- EM Budget Oversight
- Emergency Operations Center
- Emergency Management Plans
 - Emergency Alerting
- Public Messaging and Outreach
- Local Emergency Planning Committee (LEPC)
 - Federal Grants
- Planned Event/Incident Support
- Lead Coordination for SL Valley

Contra Allocation

Operations
\$52,260

Training delayed and
professional fees
impacted

Where We're Going



- Valley Intel
- Mitigation Projects
 - Recovery Plan
 - Training & Exercise
- Salt Lake Valley Incident Management Team
 - Legislative Engagement

