



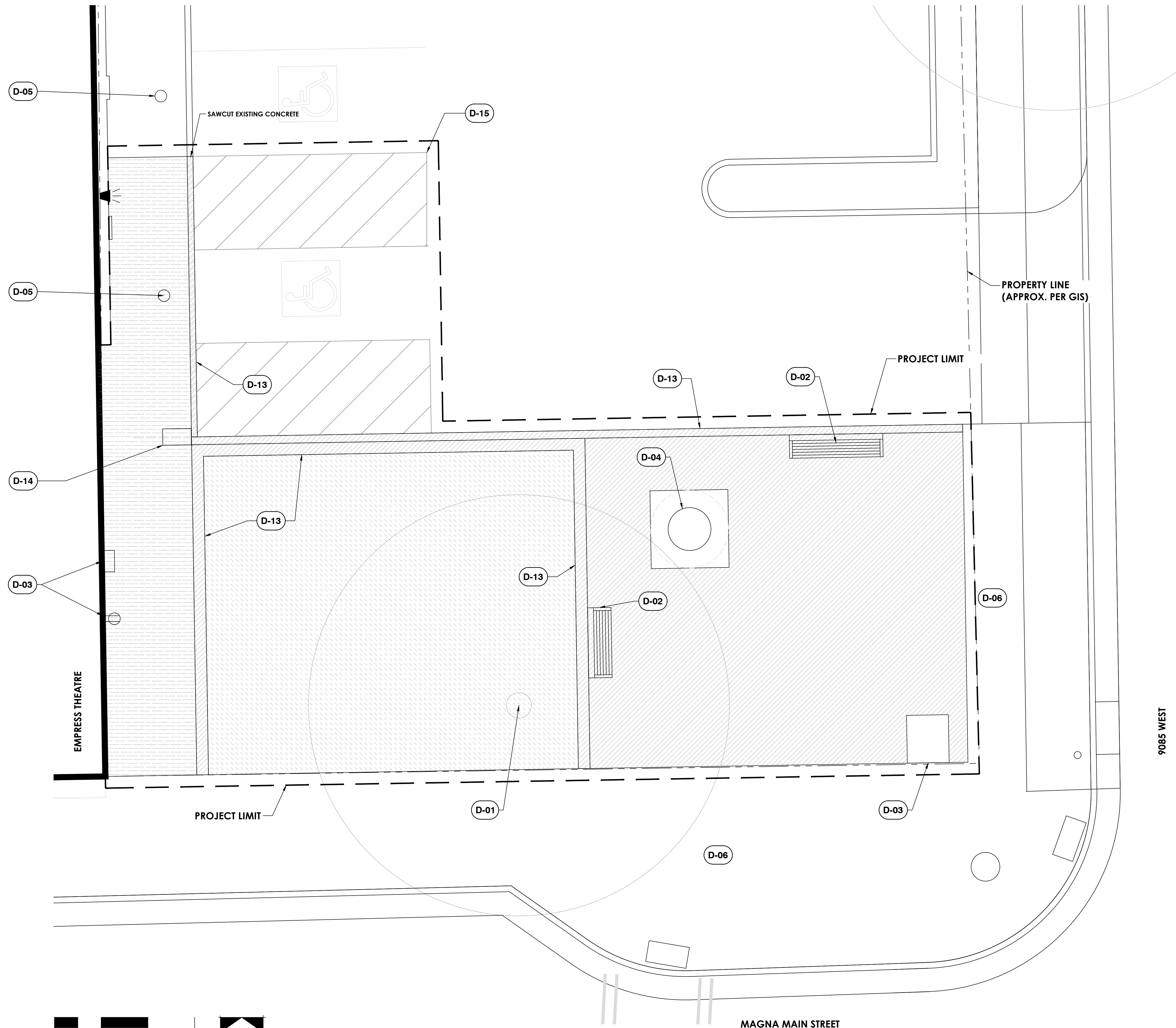
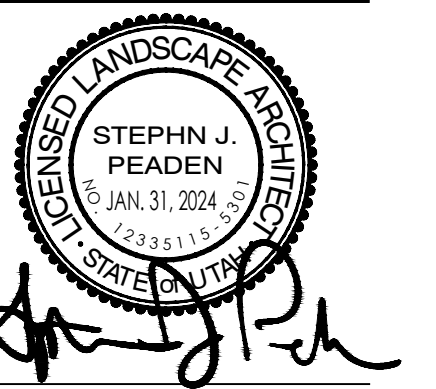
Think
Architecture

Architecture
Interior Design
Landscape Architecture
Land Planning
Construction Management

7927 High Point Parkway, Suite 300
Sandy, UT 84094
Ph: 801.269.0055
Fax: 801.269.1425
www.thinkaesc.com

The designs shown and described herein including all technical drawings, graphic representation & models thereof, are proprietary & can not be copied, duplicated, or commercially exploited in whole or in part without the sole and express written permission from ASWN+JA Architects, Inc.

These drawings are available for limited review and evaluation by clients, consultants, contractors, government agencies, vendors and office personnel only in accordance with this notice.



DEMOLITION LEGEND

SYMBOL	DESCRIPTION
D-01	TREE TO BE REMOVED
D-02	BENCH TO BE REMOVED
D-03	EXISTING UTILITY TO REMAIN
D-04	EXISTING MONUMENT TO REMAIN
D-05	ADA SIGN TO BE REMOVED AND SALVAGED
D-06	EXISTING CONCRETE TO REMAIN
D-13	CURB TO BE REMOVED
D-14	IRRIGATION VALVE AND BOX TO BE REMOVED AND REINSTALLED PER IRRIGATION PLAN

SYMBOL	DESCRIPTION
[Hatched pattern]	TURF TO BE REMOVED
[Diagonal hatched pattern]	CONCRETE TO BE REMOVED
[Horizontal hatched pattern]	REMOVE EXISTING VEGETATION

DEMOLITION NOTES

- EXISTING CONDITIONS AND TOPOGRAPHY TAKEN. SITE MEASUREMENTS AND AERIAL PHOTOGRAPHY. NOT BASED ON A SURVEY.
- CONTRACTOR SHALL VERIFY ALL UTILITY LOCATIONS THROUGH BLUE STAKES PRIOR TO DEMOLITION AND CONSTRUCTION.
- THE CONTRACTOR SHALL BE RESPONSIBLE FOR A THOROUGH SITE EXAMINATION TO DETERMINE THE EXTENT OF DEMOLITION NECESSARY TO PREPARE THE SITE FOR CONSTRUCTION AND SHALL VERIFY ALL ITEMS TO BE DEMOLISHED OR SALVAGED WITH THE LANDSCAPE ARCHITECT PRIOR TO BEGINNING WORK.
- CARE SHALL BE TAKEN NOT TO DAMAGE ANY ITEMS DESIGNATED TO REMAIN. REPAIR OR REPLACEMENT OF DAMAGED ITEMS DESIGNATED TO REMAIN SHALL BE AT THE CONTRACTOR'S EXPENSE.
- DISPOSAL OF PROPERTY DESIGNATED "TO BE REMOVED" SHALL BE DISPOSED OF BY THE CONTRACTOR AT THE DIRECTION OF THE LANDSCAPE ARCHITECT OR OWNER, AND SHALL CONFORM TO ALL APPLICABLE LAWS AND REGULATIONS. ALL SALVAGEABLE MATERIAL SHALL BE DELIVERED BY THE CONTRACTOR TO STORAGE AREAS DESIGNATED BY THE LANDSCAPE ARCHITECT AND/OR OWNER. CONTRACTOR SHALL REMOVE ALL EXISTING UNSUITABLE MATERIALS FROM THE SITE.
- THE CONTRACTOR SHALL PROTECT EXISTING TREES TO REMAIN WITH STAKES AND FENCING FABRIC AS DETAILED.
- THE CONTRACTOR SHALL USE TEMPORARY FENCING TO CONTROL THE SITE DURING CONSTRUCTION. PRIOR TO THE FINALIZATION OF THE PROJECT, THE CONTRACTOR SHALL REMOVE ALL TEMPORARY FENCING AND BARRICADES.
- THE CONTRACTOR SHALL BE RESPONSIBLE FOR REMOVAL OF ALL SURFACE DEBRIS, STOCKPILES, ETC. CURRENTLY FOUND ON THE SITE IN PREPARATION FOR COMMENCEMENT OF NEW CONSTRUCTION.

MAGNA MANTLE PARK
9094 W MAGNA MAIN ST
MAGNA, UT 84044

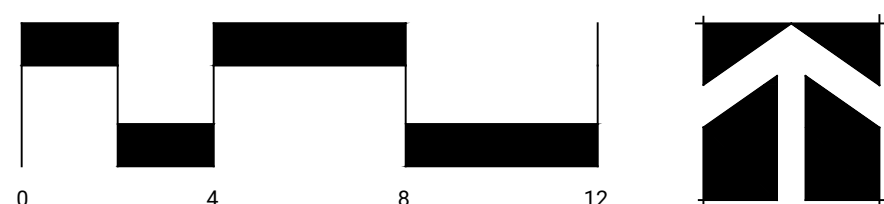
PROJECT NO. 23088
DATE: JAN. 31, 2024

REVISIONS:

SHEET TITLE:
DEMO PLAN

SHEET NUMBER:
L002
LANDSCAPE

BID SET - JANUARY 31, 2024





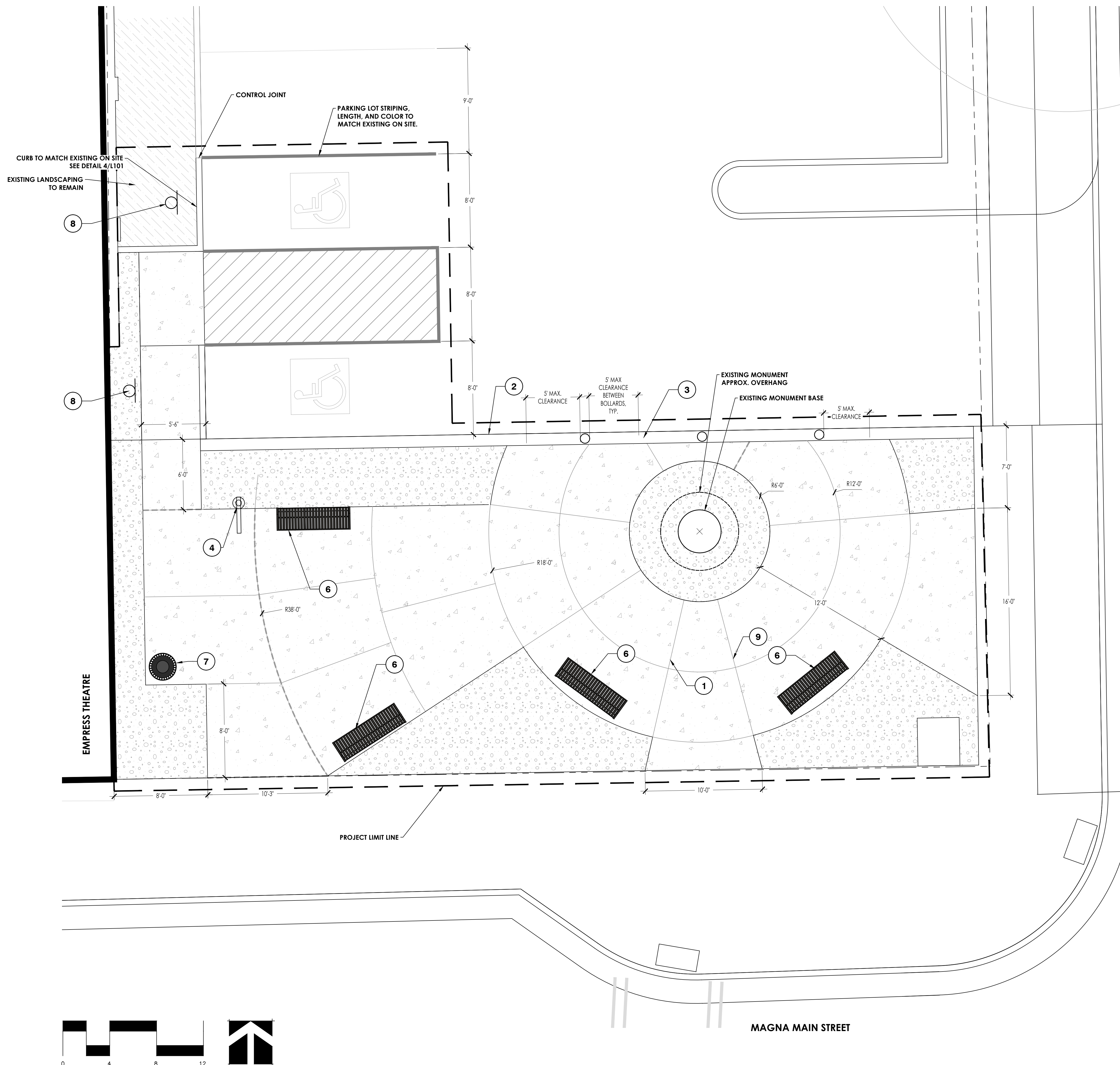
Think
Architecture

Architecture
Interior Design
Landscape Architecture
Land Planning
Construction Management

7927 High Point Parkway, Suite 300
Sandy, UT 84094
Ph: 801.269.0055
Fax: 801.269.1425
www.thinkaesc.com

The designs shown and described herein including all technical drawings, graphic representation & models thereof, are proprietary & can not be copied, duplicated, or commercially exploited in whole or in part without the sole and express written permission from ASWN+JA Architects, Inc.

These drawings are available for limited review and evaluation by clients, consultants, contractors, government agencies, vendors and office personnel only in accordance with this notice.



LEGEND

SYMBOL	DESCRIPTION	DETAIL	
1	EXPANSION JOINT (TYP.)		
2	12" CURBING BETWEEN ASPHALT AND PLAZA	2/L101	
3	STREET BOLLARD	3/L101	
4	LAMP POST. SEE LIGHTING PLAN		
5	BOLLARD: BLACK POWDER COATED	3/L101	
6	ANOVA L1369 6FT. CONTOUR BENCH WITH STEEL SLAT SEAT AND SQUARE TUBE ENDS FINISH: BLACK GLOSS		
7	TRASH RECEPTACLE OPTIONAL PER OWNER		
8	ACCESSIBLE PARKING SIGN	6/L101	
9	CONTROL JOINT (TYP.)		
SYMBOL	DESCRIPTION	QTY	DETAIL
	PLANTER BED WITH 4" DEPTH OF 1-2" SOUTH TOWN COBBLE OR APPROVED ALTERNATE. TOP SOIL TO BE 18" DEEP	695 SF	
	STANDARD CONCRETE WALK/PLAZA	1,470 SF	1/L101

NOTES

- THIS DRAWING IS NOT BASED ON AN SURVEY. LINEWORK IS DERIVED FROM A COMBINATION OF AERIAL IMAGERY, SITE MEASUREMENTS, AND GIS DATA.
- ALL SURFACES SHALL BE SLOPED TO DRAIN, 1-2% GRADE.

NOTE:
CONTRACTOR TO PROVIDE SEPARATE PRICING FOR EACH ADD ALTERNATE

LANDSCAPE NOTES

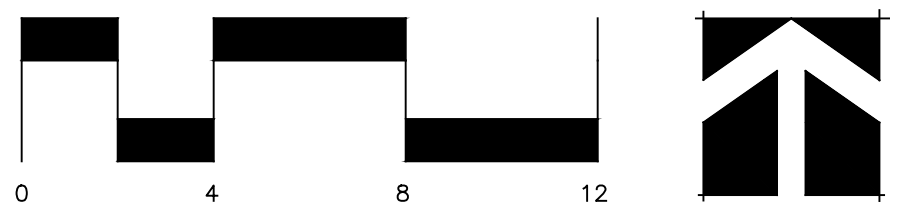
- ALL LINES OR POINTS ARE PERPENDICULAR OR PARALLEL TO LINES FROM WHICH THEY ARE MEASURED UNLESS OTHERWISE NOTED; DIMENSIONS SHALL PREVAIL.
- THE CONTRACTOR SHALL VERIFY ALL LAYOUT, DIMENSIONS, GRADES, AND INVERTS PRIOR TO CONSTRUCTION; REPORT ANY AND ALL DISCREPANCIES TO THE LANDSCAPE ARCHITECT. ALL DISCREPANCIES SHALL BE RESOLVED IN WRITTEN PRIOR TO BEGINNING WORK.
- ALL AREAS DISTURBED FROM CONSTRUCTION ACTIVITY TO BE RAKED, SMOOTHED, FERTILIZED AND SEEDED UNLESS OTHERWISE NOTED.
- ALL NEW WALKWAYS AND SURFACES TO MEET EXISTING WALKS AND SURFACES WITH SMOOTH, CONTINUOUS LINE AND GRADE.
- THE CONTRACTOR SHALL NOT INSTALL CONCRETE DURING ADVERSE WEATHER CONDITIONS (RAIN, SLEET, ETC.) UNLESS OTHERWISE DIRECTED BY THE LANDSCAPE ARCHITECT.

MAGNA MANTLE PARK
9094 W MAGNA MAIN ST
MAGNA, UT 84044

PROJECT NO. 23088
DATE: JAN. 31, 2024

REVISIONS:

BID SET - JANUARY 31, 2024
SHEET TITLE:
LANDSCAPE SITE PLAN
SHEET NUMBER:
L100
LANDSCAPE





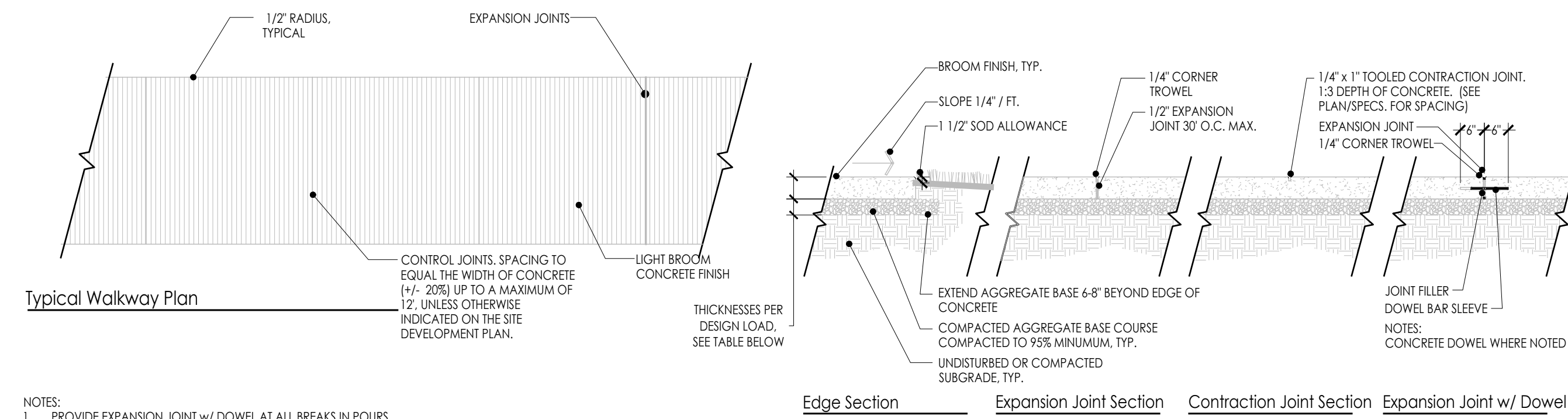
Think

Architecture
Interior Design
Landscape Architecture
Land Planning
Construction Management

7927 High Point Parkway, Suite 300
Sandy, UT 84094
Ph: 801.269.0055
Fax: 801.269.1425
www.thinkaec.com

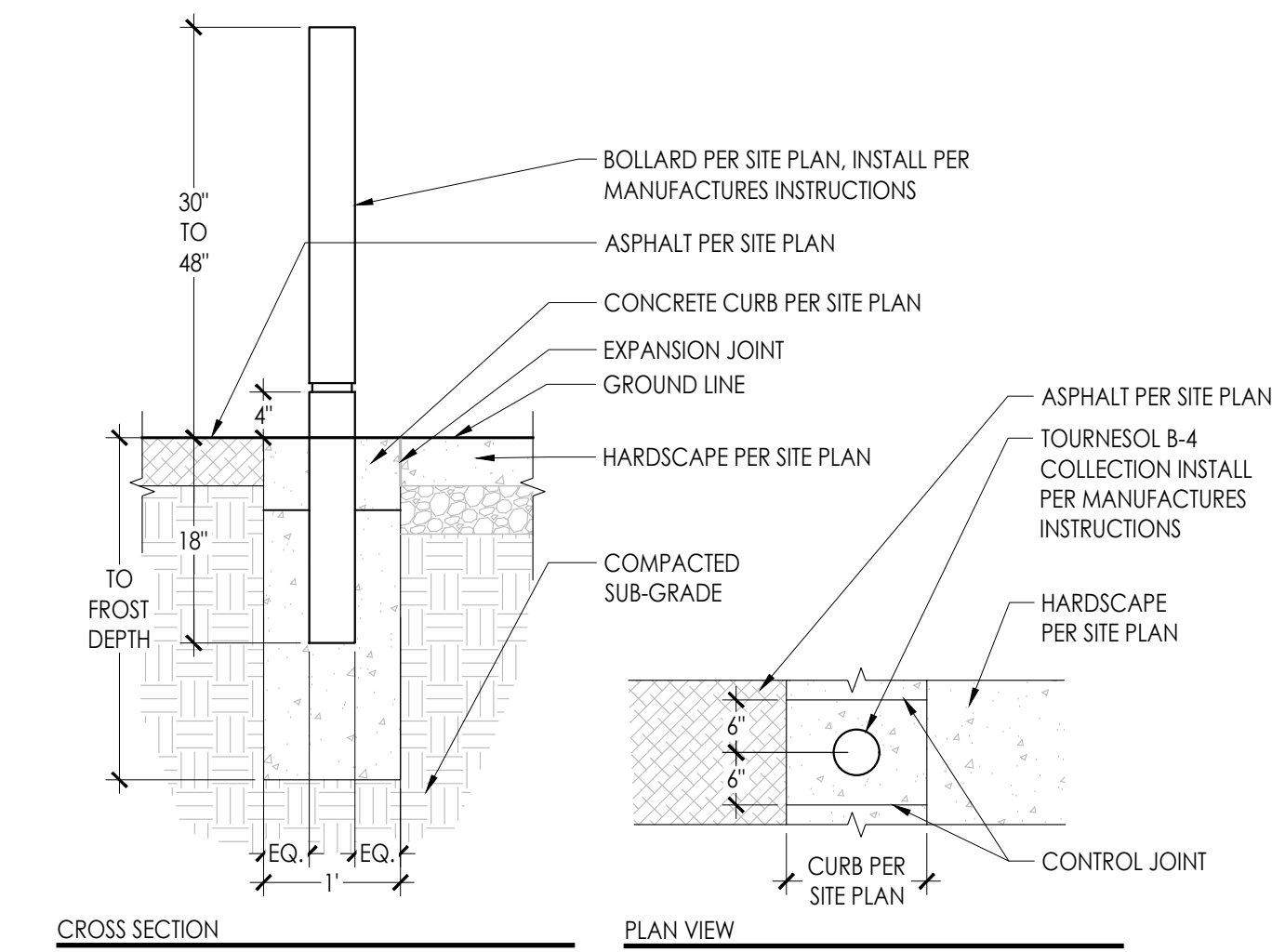
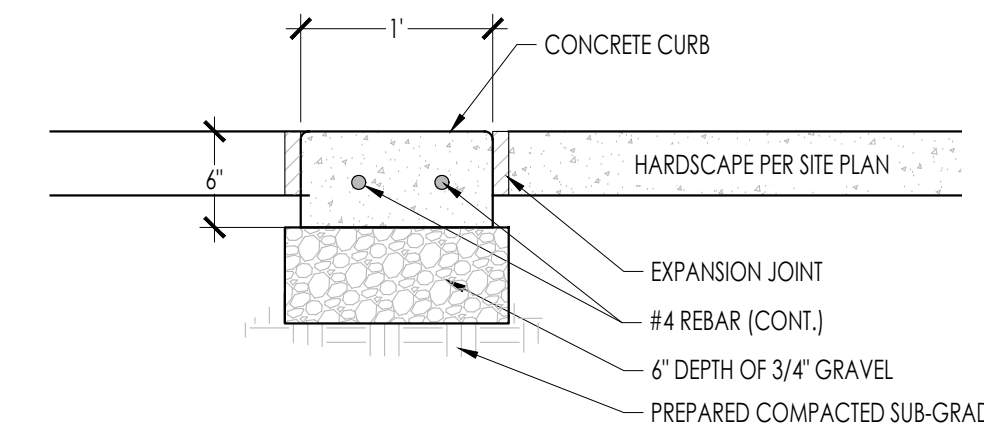
The designs shown and described herein including all technical drawings, graphic representation & models thereof, are proprietary & can not be copied, duplicated, or commercially exploited in whole or in part without the sole and express written permission from ASWN+JA Architects, Inc.

These drawings are available for limited review and evaluation by clients, consultants, contractors, government agencies, vendors and office personnel only in accordance with this notice.



- NOTES:
1. PROVIDE EXPANSION JOINT w/ DOWEL AT ALL BREAKS IN POURS.
 2. EXPANSION JOINTS SHALL OCCUR EVERY 30' UNLESS OTHERWISE NOTED.
 3. CONCRETE SHALL BE 6-1/2 BAG MIX AT 4000 PSI.
 4. SIDEWALKS AND PAVING TO HAVE LIGHT BROOM FINISH.
 5. SEE SITE PLAN FOR SCORING AND DIMENSIONS.
 6. CONCRETE WALKS/PAVING TO BE 4" THICK.
 7. PROVIDE 2% CROSS SLOPE MIN.

CONCRETE TYPE	AGGREGATE CONC. THICKNESS	BASE THICKNESS
LIGHT DUTY (SIDEWALK/PLAZA)	4"	4"
MEDIUM DUTY (LIGHT VEHICULAR USE)	6"	6"
HEAVY DUTY (HEAVY VEHICULAR USE)	8"	8"



1 SIDEWALK/CONCRETE PAVING

NOT TO SCALE

T-SI-H&C-26

2 12" CONC. CURB BETWEEN PLAZA AND PARKING

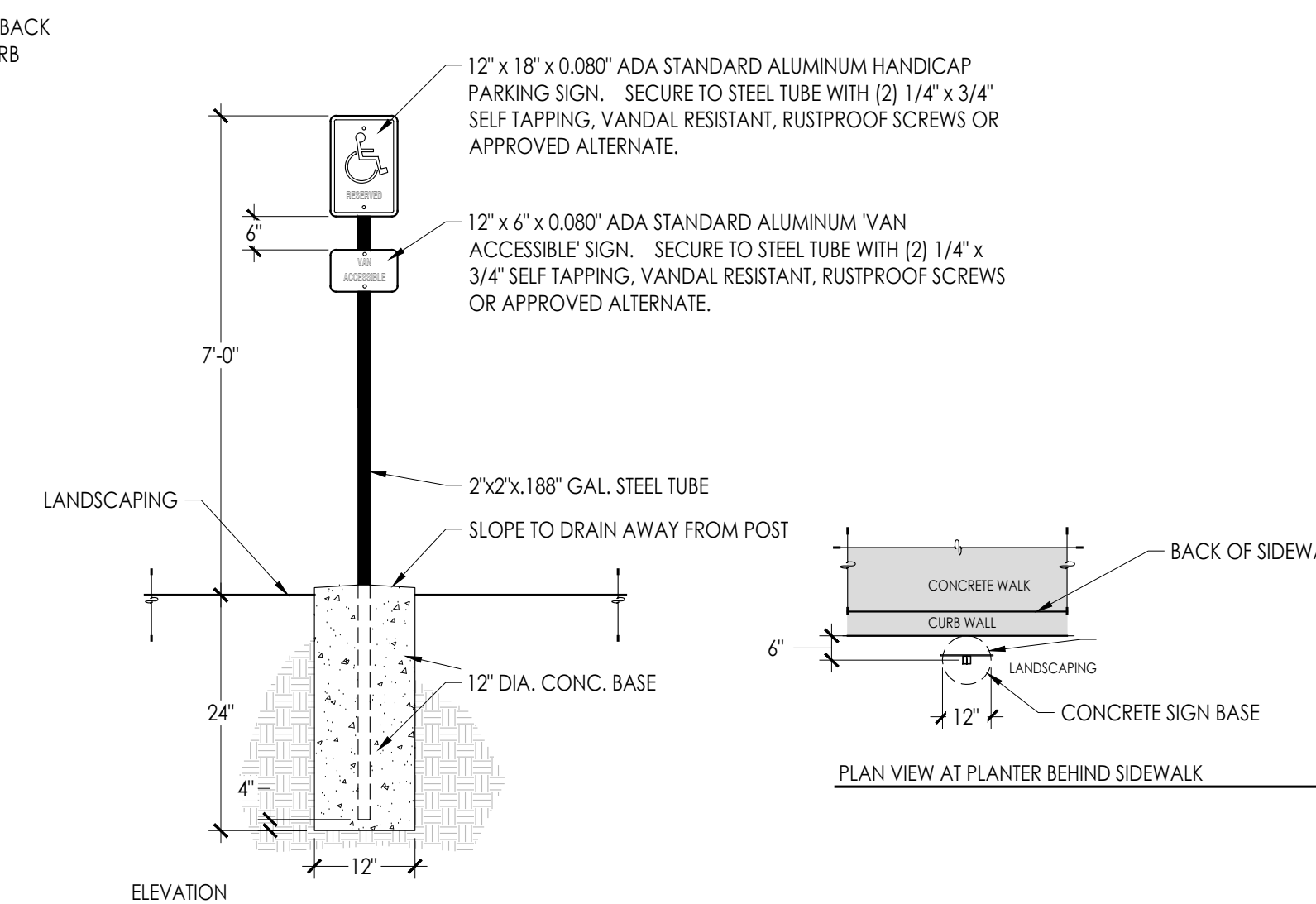
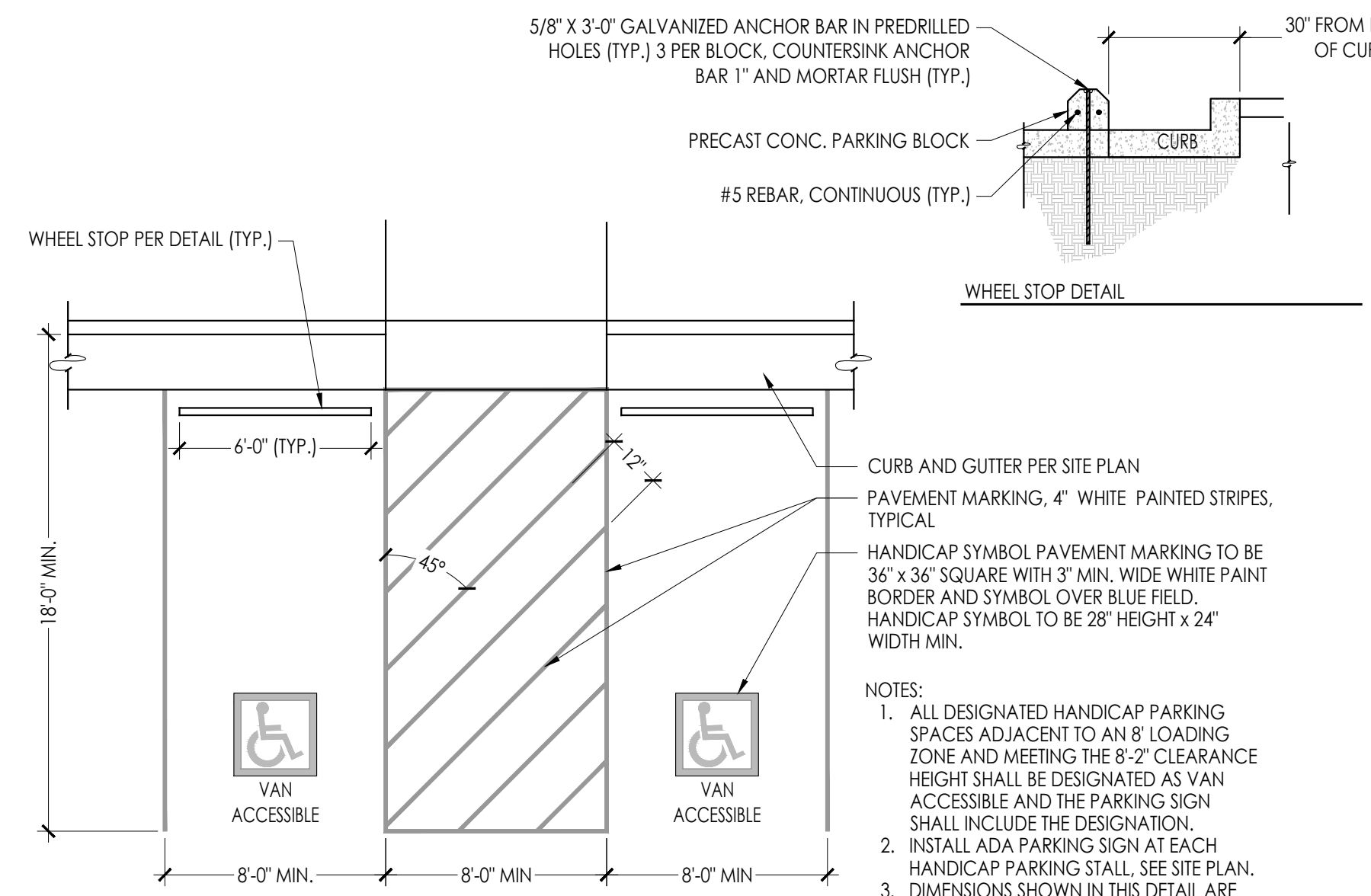
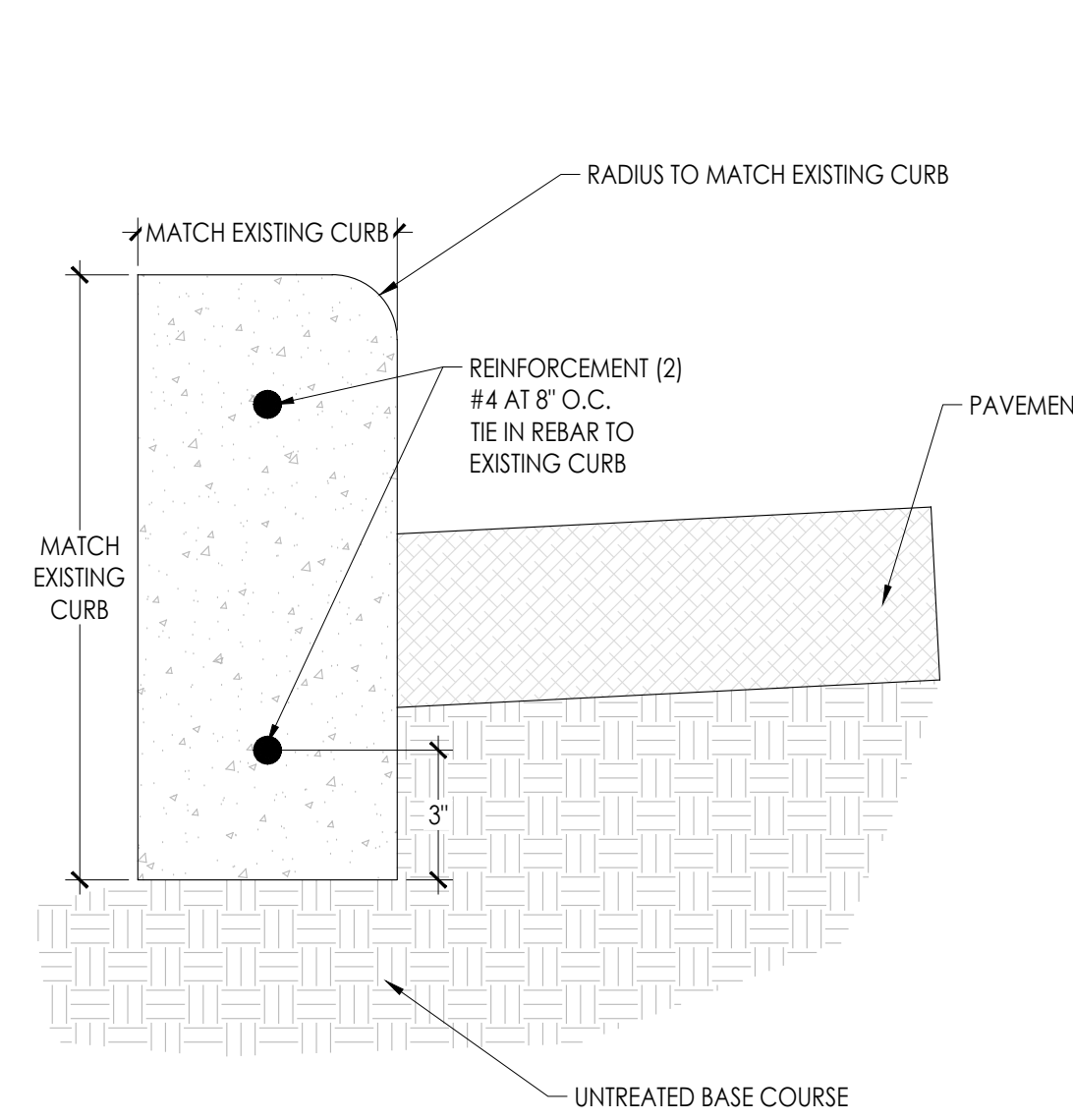
NOT TO SCALE

T-SI-H&C-02

3 BOLLARD IN CURB

NOT TO SCALE

P-MMP-02



4 CURB DETAIL

NOT TO SCALE

P-MMP-01

5 ACCESSIBLE PARKING SPACES

NOT TO SCALE

T-SI-AC-02

6 ADA ACCESSIBLE PARKING SIGN IN LANDSCAPE AREA

NOT TO SCALE

T-SI-AC-08

MAGNA MANTLE PARK
9094 W MAGNA MAIN ST
MAGNA, UT 84044

PROJECT NO. 23088
DATE: JAN. 31, 2024
REVISIONS:

BID SET - JANUARY 31, 2024
SHEET TITLE: SITE DETAILS
SHEET NUMBER: L100
LANDSCAPE



Think

Architecture
Interior Design
Landscape Architecture
Land Planning
Construction Management

7927 High Point Parkway, Suite 300
Sandy, UT 84094
Ph: 801.269.0055
Fax: 801.269.1425
www.thinkaesc.com

The designs shown and described herein including all technical drawings, graphic representation & models thereof, are proprietary & can not be copied, duplicated, or commercially exploited in whole or in part without the sole and express written permission from ASWN+JA Architects, Inc.

These drawings are available for limited review and evaluation by clients, consultants, contractors, government agencies, vendors and office personnel only in accordance with this notice.



MAGNA MANTLE PARK
9094 W MAGNA MAIN ST
MAGNA, UT 84044

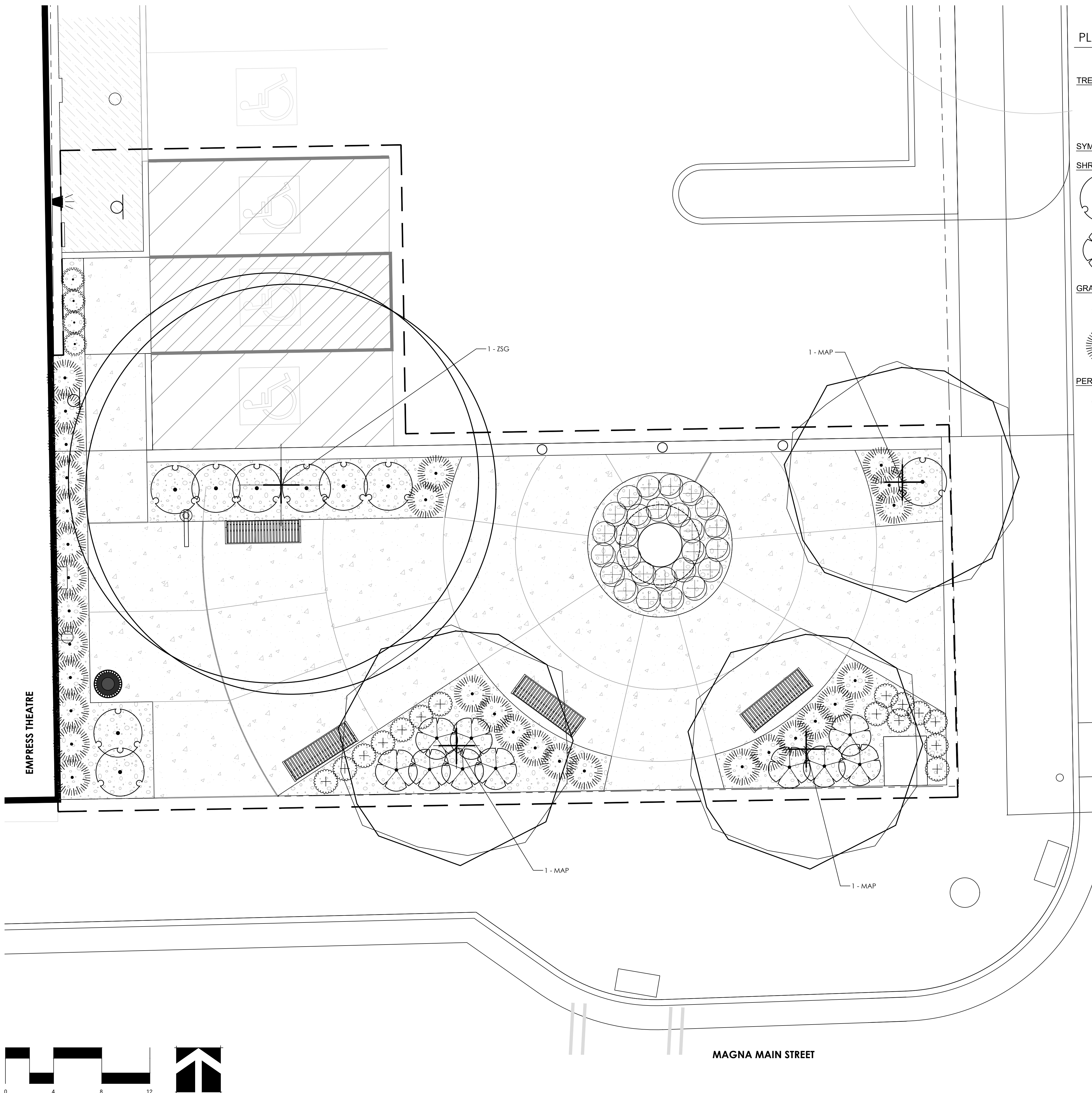
PROJECT NO. 23088
DATE: JAN. 31, 2024

REVISIONS:

BID SET - JANUARY 31, 2024
SHEET TITLE:
PLANTING PLAN
SHEET NUMBER:
L200
LANDSCAPE

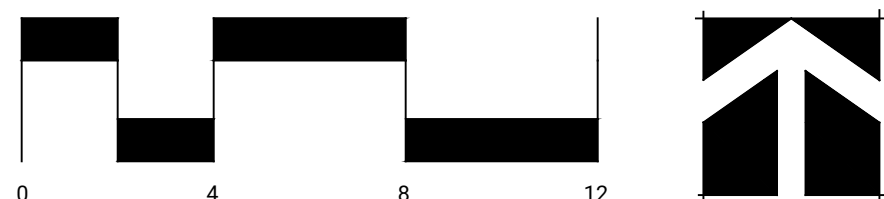
PLANT SCHEDULE

CODE	QTY	BOTANICAL / COMMON NAME	SIZE	CONTAINER
TREES				
MAP	3	MALUS X 'PRAIRIFIRE' PRAIRIFIRE CRABAPPLE	2" CAL.	B&B
ZSG	1	ZELKOVA SERRATA 'GREEN VASE' GREEN VASE SAWLEAF ZELKOVA	2" CAL.	B&B
SYMBOL				
CODE	QTY	BOTANICAL / COMMON NAME	SIZE	
SHRUBS				
CD	9	CARYOPTERIS X CLANDONENSIS 'DARK KNIGHT' DARK KNIGHT BLUEBEARD	5 GAL.	
RWR	10	ROSA X 'RADWHITE' TM WHITE KNOCK OUT ROSE	5 GAL.	
GRASSES				
FG8	4	FESTUCA GLAUCA 'BOULDER BLUE' BOULDER BLUE FESCUE	1 GAL.	
PVH	30	PANICUM VIRGATUM 'HOT ROD' SWITCH GRASS	1 GAL.	
PERENNIALS				
ABF	26	AGASTACHE X 'BLUE FORTUNE' BLUE FORTUNE ANISE HYSSOP	1 GAL.	
GLC	15	GAURA LINDHEIMERI 'CRIMSON BUTTERFLIES' CRIMSON BUTTERFLIES GAURA	1 GAL.	



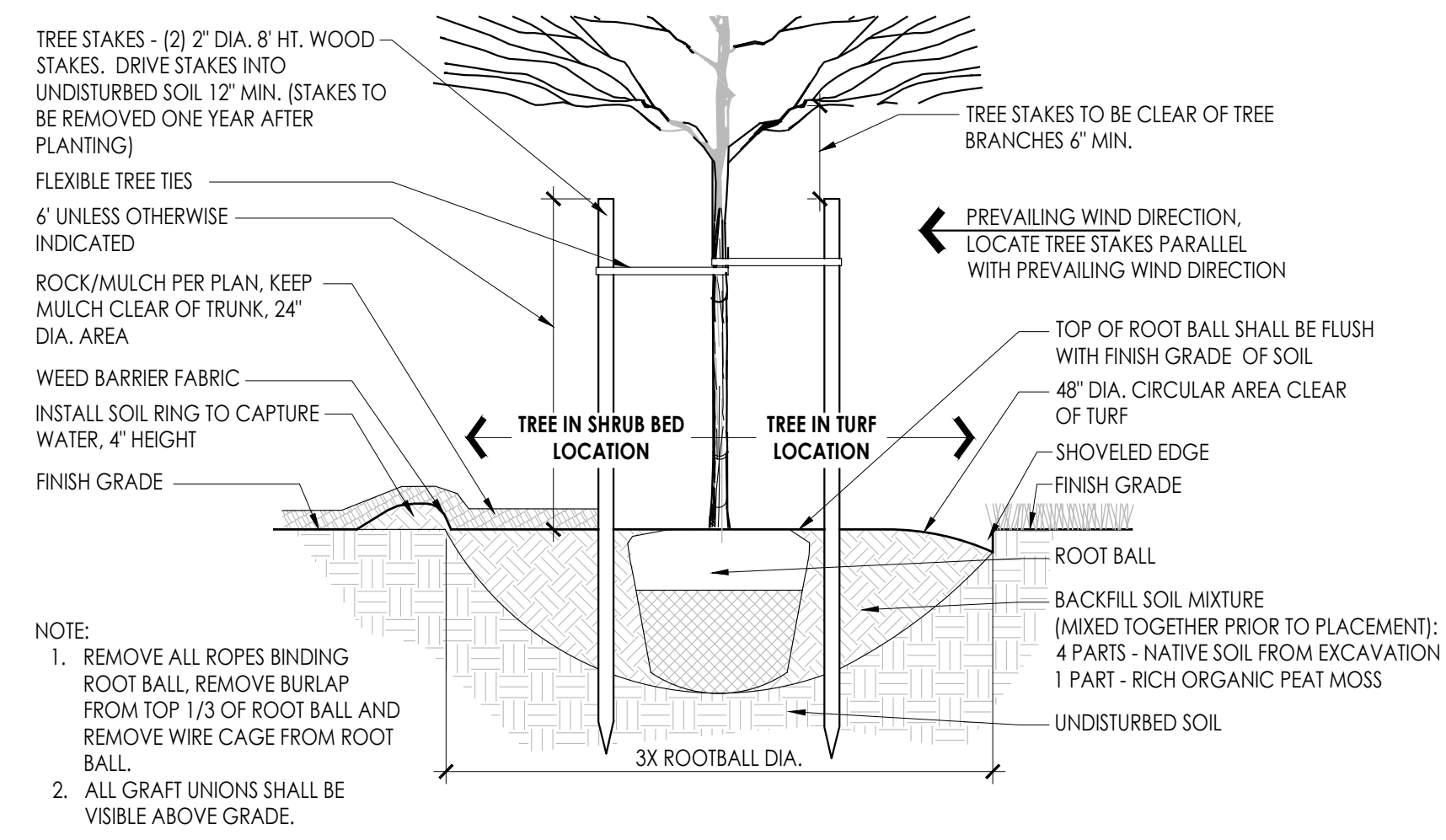
PLANTING NOTES

- CONTRACTOR SHALL BE RESPONSIBLE FOR BECOMING AWARE OF ALL RELATED EXISTING CONDITIONS, UTILITIES, PIPES, AND STRUCTURES, ETC. PRIOR TO BIDDING AND CONSTRUCTION. THE CONTRACTOR SHALL BE RESPONSIBLE FOR CONTACTING ALL UTILITY COMPANIES FOR FIELD LOCATION OF ALL UNDERGROUND UTILITY LINES, INCLUDING DEPTHS, PRIOR TO ANY EXCAVATION. CONTRACTOR SHALL TAKE SOLE RESPONSIBILITY FOR ANY AND ALL COST OR OTHER LIABILITIES INCURRED DUE TO DAMAGE OF SAID UTILITIES/STRUCTURES/ETC.
- IF CONFLICTS ARISE BETWEEN SIZE OF AREAS ENCOUNTERED ON SITE AND PLANS, CONTRACTOR IS REQUIRED TO CONTACT OWNER'S REPRESENTATIVE FOR RESOLUTION. FAILURE TO MAKE SUCH CONFLICTS KNOWN TO THE OWNER'S REPRESENTATIVE WILL RESULT IN CONTRACTOR'S LIABILITY TO RELOCATE THE MATERIALS.
- IT IS THE CONTRACTOR'S RESPONSIBILITY TO FURNISH ALL PLANT MATERIALS FREE OF PESTS OR PLANT DISEASES AND HAVE NATURAL FULL SHAPES. PRE-SELECTED OR 'TAGGED' MATERIAL MUST BE INSPECTED BY THE CONTRACTOR AND CERTIFIED PEST AND DISEASE FREE. IT IS THE CONTRACTOR'S OBLIGATION TO MAINTAIN AND WARRANT ALL PLANT MATERIALS PER THE SPECIFICATIONS. ALL PLANTS SHALL BE SUBJECT TO OWNER'S APPROVAL PRIOR TO INSTALLATION.
- PROVIDE MATCHING SIZES AND FORMS FOR EACH SPECIES OF TREES.
- CONTRACTOR TO REMOVE TREE STAKES AT END OF GUARANTEE PERIOD.
- CONTRACTOR TO PRUNE TREES AS DIRECTED BY LANDSCAPE ARCHITECT FOR PROPER SHAPING OF TREES.
- REMOVE ALL TAGS, TIES AND FLAGGING FROM ALL PLANT MATERIAL.
- SOIL: ALL AREAS TO RECEIVE TOPSOIL SHALL BE SCARIFIED PRIOR TO PLACEMENT OF TOPSOIL. ALL SHRUB/PERENNIAL PLANTING AREAS TO RECEIVE 18" OF TOPSOIL PRIOR TO PLANTING UNLESS OTHERWISE INDICATED.
- ALL PLANTER BEDS SHALL INCLUDE MULCH OR ROCK PER PLAN. TOP OF MULCH OR ROCK SHALL BE FLUSH WITH FINISH GRADE OF ADJACENT CONCRETE. INSTALL 5 OZ. POLYSPUN WEED BARRIER BENEATH ALL ROCK.

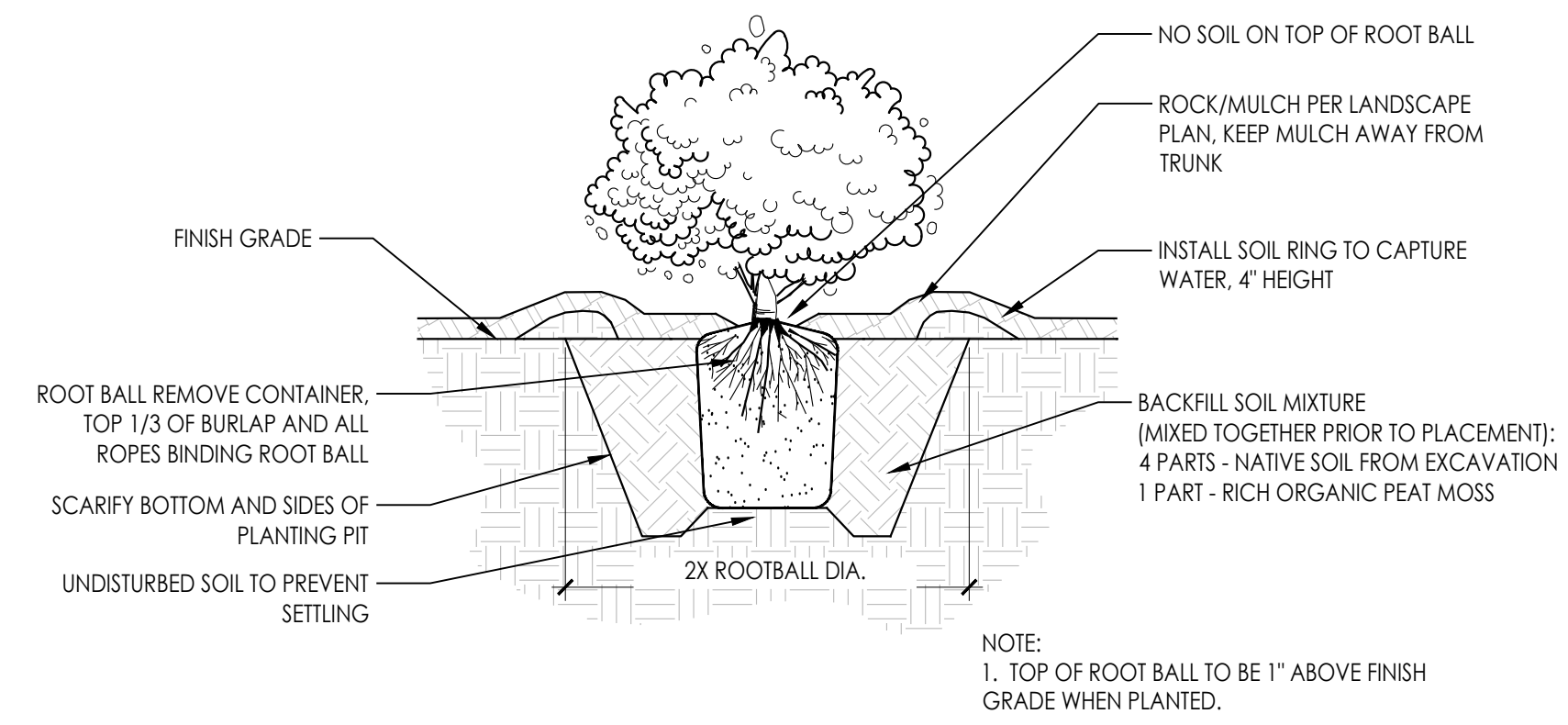


MAGNA MAIN STREET

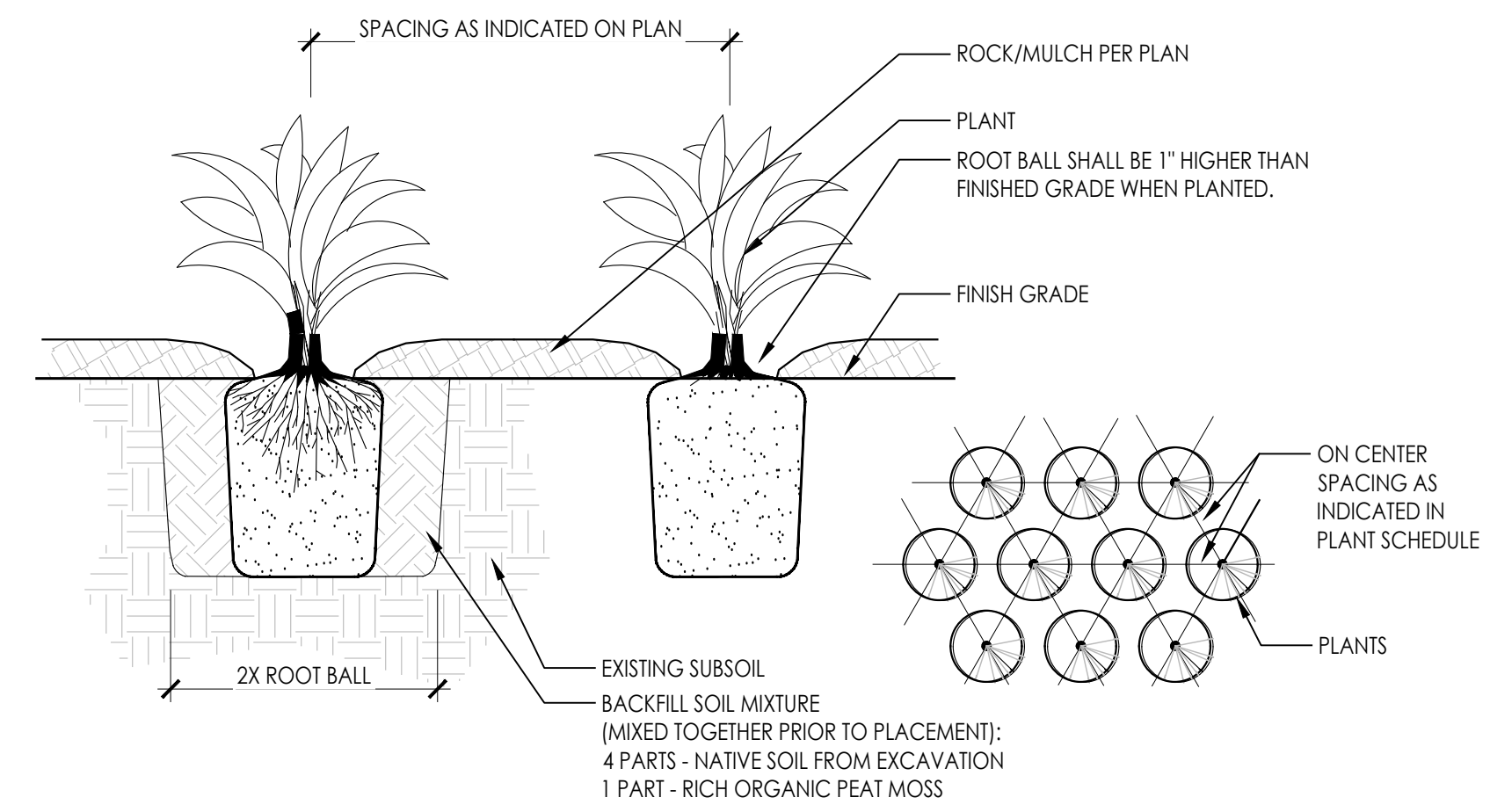
9085 WEST



1 DECIDUOUS TREE PLANTING
NOT TO SCALE T-PL-02



2 SHRUB PLANTING
NOT TO SCALE T-PL-04



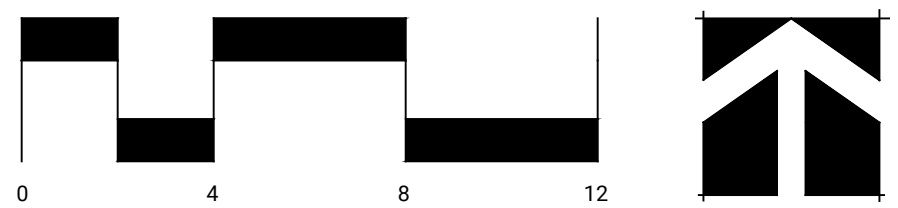
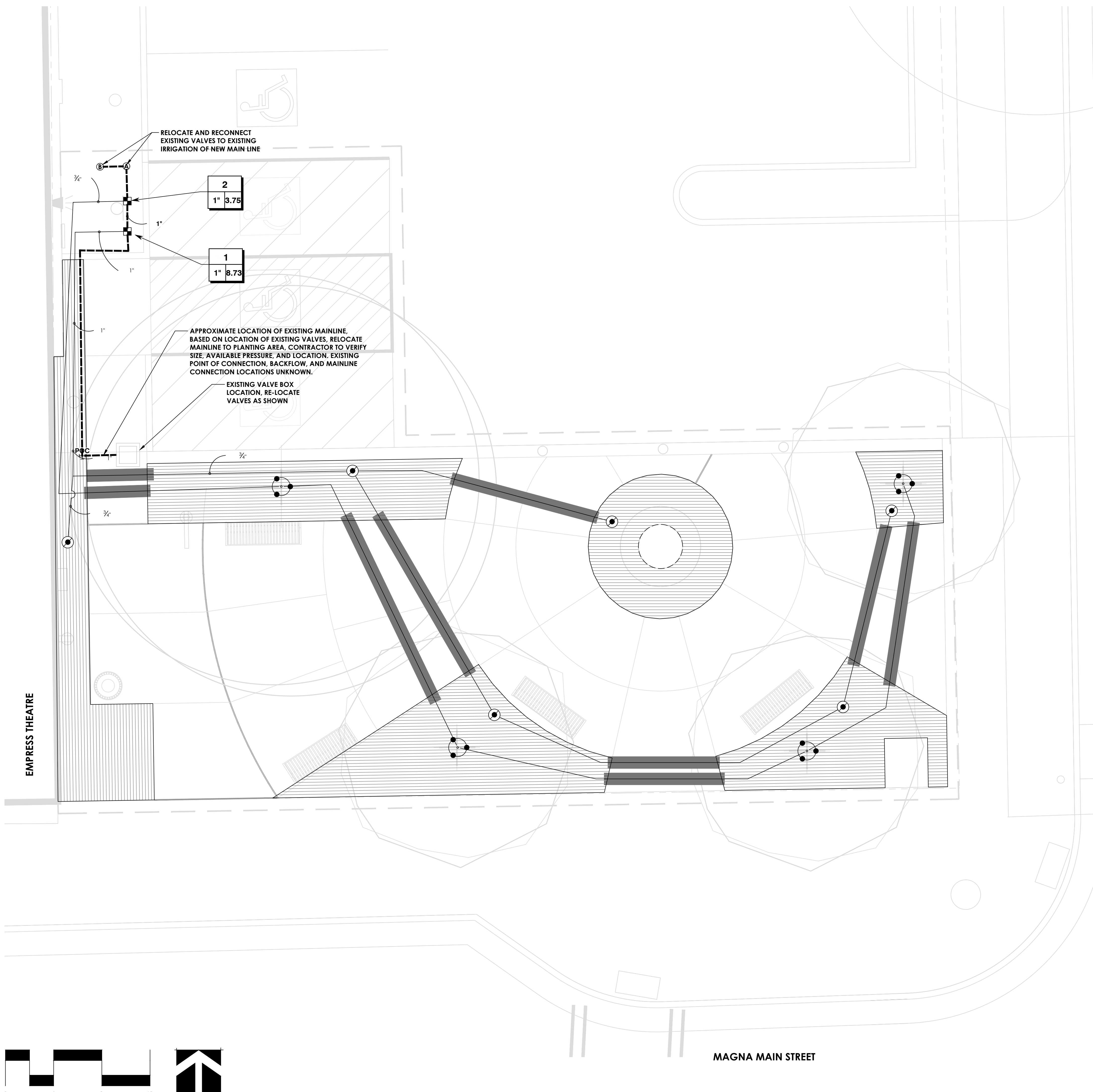
3 PERENNIAL PLANTING
NOT TO SCALE T-PL-05



MAGNA MANTLE PARK
9094 W MAGNA MAIN ST
MAGNA, UT 84044

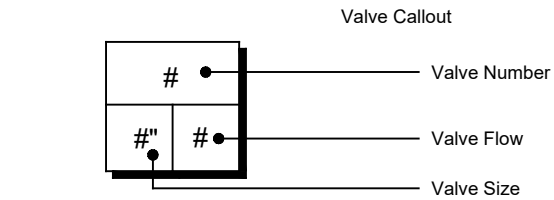
PROJECT NO. 23088
DATE: JAN. 31, 2024
REVISIONS:

BID SET - JANUARY 31, 2024
SHEET TITLE:
PLANTING DETAILS
SHEET NUMBER:
L201
LANDSCAPE



IRRIGATION SCHEDULE

SYMBOL	MANUFACTURER/MODEL/DESCRIPTION	DETAIL
	RAIN BIRD XFD-100-PRF MEDIUM FLOW DRIP CONTROL KIT, 1" DV VALVE, 1" PRESSURE REGULATING FILTER, 40PSI PRESSURE REGULATOR, 3GPM - 15GPM.	8/L301
	PIPE TRANSITION POINT ABOVE GRADE PIPE TRANSITION POINT FROM PVC LATERAL TO DRIP TUBING WITH RISER TO ABOVE GRADE INSTALLATION.	
	RAINBIRD RWS-B-C-1401 THIS SYMBOL REPRESENTS 3 RWS HEADS.	4/L301
	AREA TO RECEIVE DRIPLINE RAIN BIRD XFD-06-12 XFD ON-SURFACE PRESSURE COMPENSATING LANDSCAPE DRIPLINE, 0.6 GPH EMITTERS AT 12" O.C., DRIPLINE LATERALS SPACED AT 12" APART, WITH EMITTERS OFFSET FOR TRIANGULAR PATTERN, UV RESISTANT. SPECIFY XF INSERT FITTINGS.	/
SYMBOL	MANUFACTURER/MODEL/DESCRIPTION	DETAIL
	VALVE TO EXISTING ZONE REUSE EXISTING VALVE WHERE FEASIBLE	
	VALVE TO EXISTING ZONE REUSE EXISTING VALVE WHERE FEASIBLE	
	POINT OF CONNECTION 1 1/2" SEE CIVIL DRAWINGS FOR CONNECTION LOCATION	
	IRRIGATION LATERAL LINE: PVC SCHEDULE 40	6/L301
	IRRIGATION MAINLINE: PVC SCHEDULE 40	6/L301
	PIPE SLEEVE: PVC SCHEDULE 40	7/L301



IRRIGATION NOTES

9085 WEST

- WORK SHALL CONFORM WITH STANDARDS OF LOCAL JURISDICTION.
- CONTRACTOR SHALL BE RESPONSIBLE FOR ENSURING ADEQUATE COVERAGE OF ALL IRRIGATED AREAS.
- NO MAJOR REVISIONS IN THE DESIGN WILL BE ALLOWED WITHOUT WRITTEN APPROVAL FROM THE LANDSCAPE ARCHITECT
- IT IS THE RESPONSIBILITY OF THE CONTRACTOR TO BECOME FAMILIAR WITH CONDITIONS OF THE SITE INCLUDING GRADES, LOCATIONS OF WALKS, STRUCTURES AND UTILITIES.
- THE CONTRACTOR SHALL REPAIR OR REPLACE ALL ITEMS DAMAGED DURING CONSTRUCTION. CONTRACTOR SHALL COORDINATE WORK WITH OTHER CONTRACTORS FOR THE LOCATION AND INSTALLATION OF PIPE SLEEVES AND LATERAL LINES THROUGH WALLS, AND UNDER HARD SURFACES. SLEEVES INSTALLED AT IMPROPER DEPTHS WILL BE RE-INSTALLED BY BORING METHODS.
- CONTRACTOR SHALL NOT WILLFULLY INSTALL THE IRRIGATION SYSTEM COMPONENTS SHOWN ON THE PLAN WHEN FIELD CONDITIONS, INCLUDING UNKNOWN OBSTRUCTIONS, DIFFERENCES IN GRADE AND AREA DIMENSIONS EXIST THAT ARE NOT INCLUDED IN THE DESIGN. CONTRACTOR TO NOTIFY THE LANDSCAPE ARCHITECT WHEN SUCH OBSTRUCTIONS OR DIFFERENCES OCCUR. IN THE EVENT THIS NOTIFICATION IS NOT PERFORMED, THE CONTRACTOR SHALL ASSUME FULL RESPONSIBILITY FOR ANY REVISIONS OR CHANGE ORDERS.
- CONNECT ALL VALVES TO THE EXISTING CONTROLLER. CONTRACTOR TO VERIFY THE LOCATION AND CAPACITY OF THE EXISTING CONTROLLER TO ACCOMMODATE THE PROPOSED IRRIGATION SYSTEM. IRRIGATION CONTRACTOR IS RESPONSIBLE FOR INSTALLING CONDUITS AND WIRING FROM VALVES TO CONTROLLERS.
- THE IRRIGATION CONTRACTOR SHALL ADJUST VALVES, FLUSH AND ADJUST IRRIGATION HEADS FOR OPTIMUM COVERAGE WITH MINIMAL OVERSPRAY ONTO HARD SURFACES AND ELIMINATE SPRAY ON BUILDINGS AND OTHER VERTICAL SURFACES.
- THE LANDSCAPE ARCHITECT HAS THE RIGHT TO REFUSE MATERIAL OR WORK WHICH DOES NOT CONFORM TO THE CONSTRUCTION DOCUMENTS. REJECTED WORK SHALL BE REMOVED OR CORRECTED AS SOON AS POSSIBLE AT THE CONTRACTOR'S EXPENSE.
- GUARANTEE: ALL WORK SHALL BE GUARANTEED FOR ONE YEAR FROM DATE OF ACCEPTANCE AGAINST ALL DEFECTS IN MATERIAL, EQUIPMENT, AND WORKMANSHIP. GUARANTEE SHALL ALSO COVER REPAIR FOR DAMAGE TO ANY PART OF THE PROJECT PROPERTY RESULTING FROM LEAKS OR OTHER DEFECTS IN MATERIAL, EQUIPMENT OR WORKMANSHIP, TO THE SATISFACTION OF THE OWNER. REPAIRS, IF REQUIRED, SHALL BE COMPLETED PROMPTLY AND AT NO COST TO THE OWNER.
- THE IRRIGATION PLAN IS DRAWN DIAGRAMMATICALLY FOR CLARITY. IT IS THE INTENT TO HAVE ALL PIPING, VALVES, AND WIRING TO BE LOCATED IN PLANTING AREAS, WITH THE EXCEPTION OF LOCATIONS REQUIRED FOR HARD SURFACE CROSSINGS. ADDITIONAL SLEEVES WILL BE REQUIRED. ALL IRRIGATION SLEEVES MAY NOT BE SHOWN.
- REFER TO PLANTING PLAN FOR COORDINATING HEAD LOCATIONS WITH TREE LOCATIONS. IRRIGATION HEADS TO BE LOCATED TO MINIMIZE TREE CREATED SPRAY SHADOW.
- ESTIMATED STATIC WATER PRESSURE AT POINT OF CONNECTION: 75 PSI. CONTRACTOR IS TO NOTIFY LANDSCAPE ARCHITECT IN WRITING IF STATIC PRESSURE IS LESS.
- PRIOR TO ACCEPTANCE OF WORK AND AS PART OF THE IRRIGATION PUNCH LIST THE CONTRACTOR SHALL CONDUCT A MEETING WITH THE OWNER TO DEMONSTRATE THE OPERATION OF THE ENTIRE IRRIGATION SYSTEM INCLUDING WINTERIZATION AND START-UP PROCEDURES AND PROVIDE A RECOMMENDED IRRIGATION SCHEDULE. REMOVE OPERATING EQUIPMENT, IF ANY, SHALL BE GIVEN TO OWNER AT THIS TIME.
- ALL VALVE BOXES TO BE SUPPORTED WITH BRICK / CONCRETE MASONRY UNIT.
- LOCATE IRRIGATION CONTROL VALVES IN LANDSCAPE AREAS, ADJACENT TO WALKS OR CURBS. VALVE BOXES TO BE TAN COLORED IN PLANTER BED AREAS AND GREEN COLORED IN GRASS AREAS
- IRRIGATION SYSTEM WIRING LOCATED APART FROM IRRIGATION MAIN LINE TO BE PLACED IN GRAY PVC SLEEVES OF ADEQUATE SIZE.
- CONTRACTOR TO CONDUCT A SYSTEM PRESSURE TEST IN THE PRESENCE OF THE LANDSCAPE ARCHITECT PRIOR TO BACKFILLING MAIN LINE TRENCHES. CONTRACTOR TO NOTIFY THE LANDSCAPE ARCHITECT TWO WORKING DAYS MINIMUM PRIOR TO CONDUCTING THE SYSTEM PRESSURE TEST. PRESSURE TEST MAIN LINE AND ALL VALVES INSTALLED AT 75 PSI FOR 2 HOURS MINIMUM.



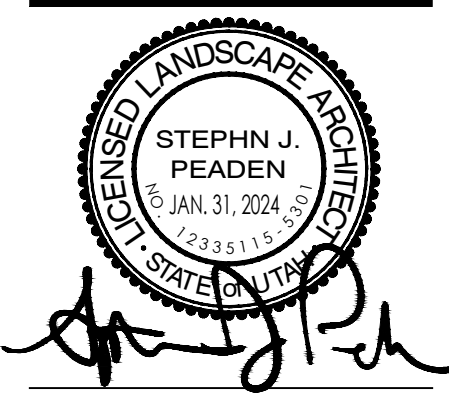
Think Architecture

Architecture
Interior Design
Landscape Architecture
Land Planning
Construction Management

7927 High Point Parkway, Suite 300
Sandys, UT 84094
Ph: 801.269.0055
Fax: 801.269.1425
www.thinkpk.com

The designs shown and described herein including all technical drawings, graphic representation & models thereof, are proprietary & can not be copied, duplicated, or commercially exploited in whole or in part without the sole and express written permission from ASWN+JA Architects, Inc.

These drawings are available for limited review and evaluation by clients, consultants, contractors, government agencies, vendors and office personnel only in accordance with this notice.

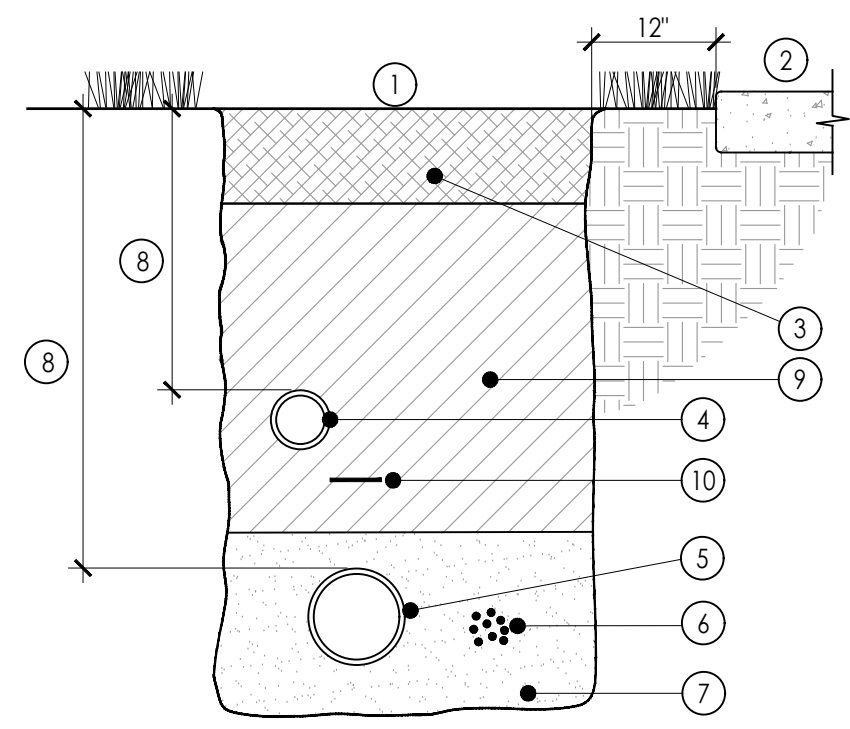


MAGNA MANTLE PARK
9094 W MAGNA MAIN ST
MAGNA, UT 84044

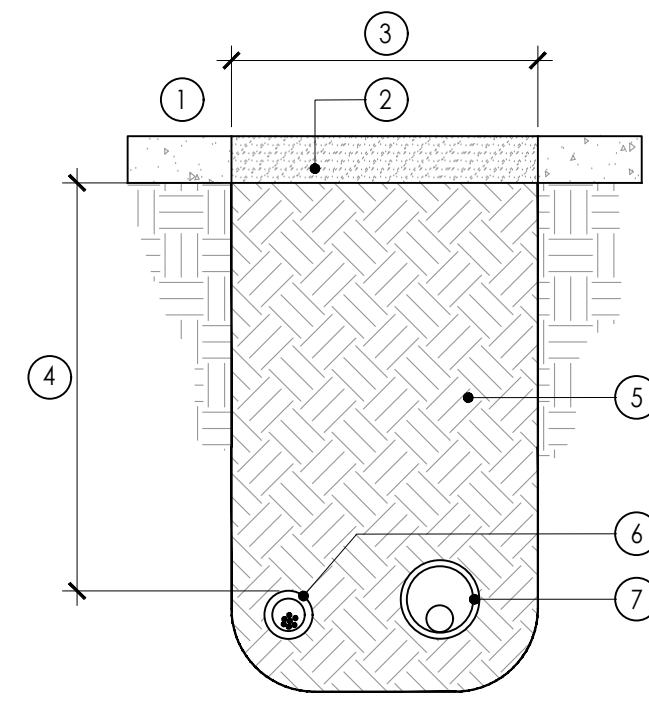
PROJECT NO. 23088
DATE: JAN. 31, 2024

REVISIONS:

BID SET - JANUARY 31, 2024
SHEET TITLE:
IRRIGATION PLAN
SHEET NUMBER:
L300
LANDSCAPE

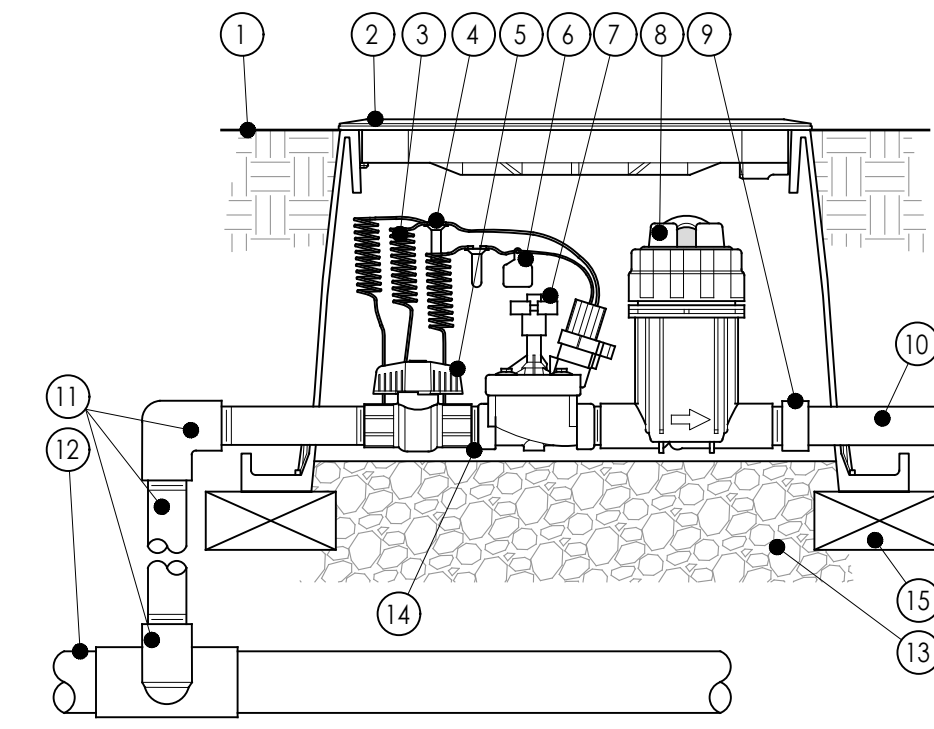


- 1 IF LAWN IS EXISTING, REPLACE SOD AS PER OWNER'S SPECIFICATIONS
- 2 ADJACENT HARD SURFACE
- 3 TOPSOIL FREE FROM ROCKS GREATER THAN 1" DIAMETER. LAYER THICKNESS AS INDICATED IN PLANTING NOTES
- 4 NON-PRESSURE LATERAL LINE
- 5 PRESSURE MAIN LINE
- 6 DIRECT BURIAL, LOW VOLTAGE CONTROL WIRES; TAPE AND BUNDLE AT 10" O.C. PLACE 6" EITHER SIDE, OR 6" BELOW MAIN LINE PIPE.
- 7 MORTAR SAND BEDDING 2" BELOW AND ABOVE PIPE
- 8 PIPE DEPTHS:
MAIN LINE: 24 - 30" COVER
LATERAL LINE: 8 - 16" COVER
- 9 BACKFILL SOIL FREE FROM ROCKS GREATER THAN 1" DIAMETER.
- 10 DETECTABLE WARNING TAPE AT MAIN LINE



- 1 CONCRETE OR ASPHALT PAVING
- 2 EXISTING HARD SURFACE TO BE SAWCUT, PATCH AS REQUIRED
- 3 WIDTH AS REQUIRED
- 4 DEPTH TO BE 24" MIN, OR TO MATCH MAIN LINE AS REQUIRED
- 5 COMPACTED BACKFILL FREE FROM ROCK GREATER THAN 1" IN DIAMETER
- 6 CONTROL WIRE SLEEVE TO BE 6" TO EITHER SIDE OR 6" BENEATH MAIN LINE
- 7 MAIN LINE / LATERAL LINE IN PVC SLEEVE

- NOTE:
1. SLEEVES 4" AND SMALLER TO BE PVC SCH. 40 PIPE.
 2. SLEEVES LARGER THAN 4" TO BE PVC CLASS 200 PIPE.
 3. ALL SLEEVES TO BE 2" LARGER THAN PIPE TO BE SLEEVED.
 4. SLEEVES FOR WIRING TO BE 2" LARGER I.D. THAN CONTROL WIRE BUNDLE.
 5. CONCRETE OR ASPHALT PATCH TO MATCH EXISTING CONCRETE OR ASPHALT CUT FOR PIPE TRENCH.



- 1 FINISH GRADE/TOP OF MULCH
- 2 VALVE BOX WITH COVER
- 3 30" LINEAR LENGTH OF WIRE, COILED
- 4 WATERPROOF WIRE CONNECTION
- 5 1" BALL VALVE (INCLUDED)
- 6 ID TAG AS REQUIRED
- 7 REMOVE CONTROL VALVE
- 8 PRESSURE REGULATING BASKET FILTER
- 9 FEMALE ADAPTOR TO LATERAL
- 10 LATERAL PIPE TO DRIP ZONE
- 11 PVC PIPE AND FITTINGS
- 12 MAIN LINE PIPE
- 13 3" MIN. DEPTH OF 3/4" WASHED GRAVEL
- 14 PVC SCH 80 CLOSE NIPPLE (INCLUDED)
- 15 BRICK (4) AS VALVE BOX FOOTING

1 TRENCH DETAIL
NOT TO SCALE

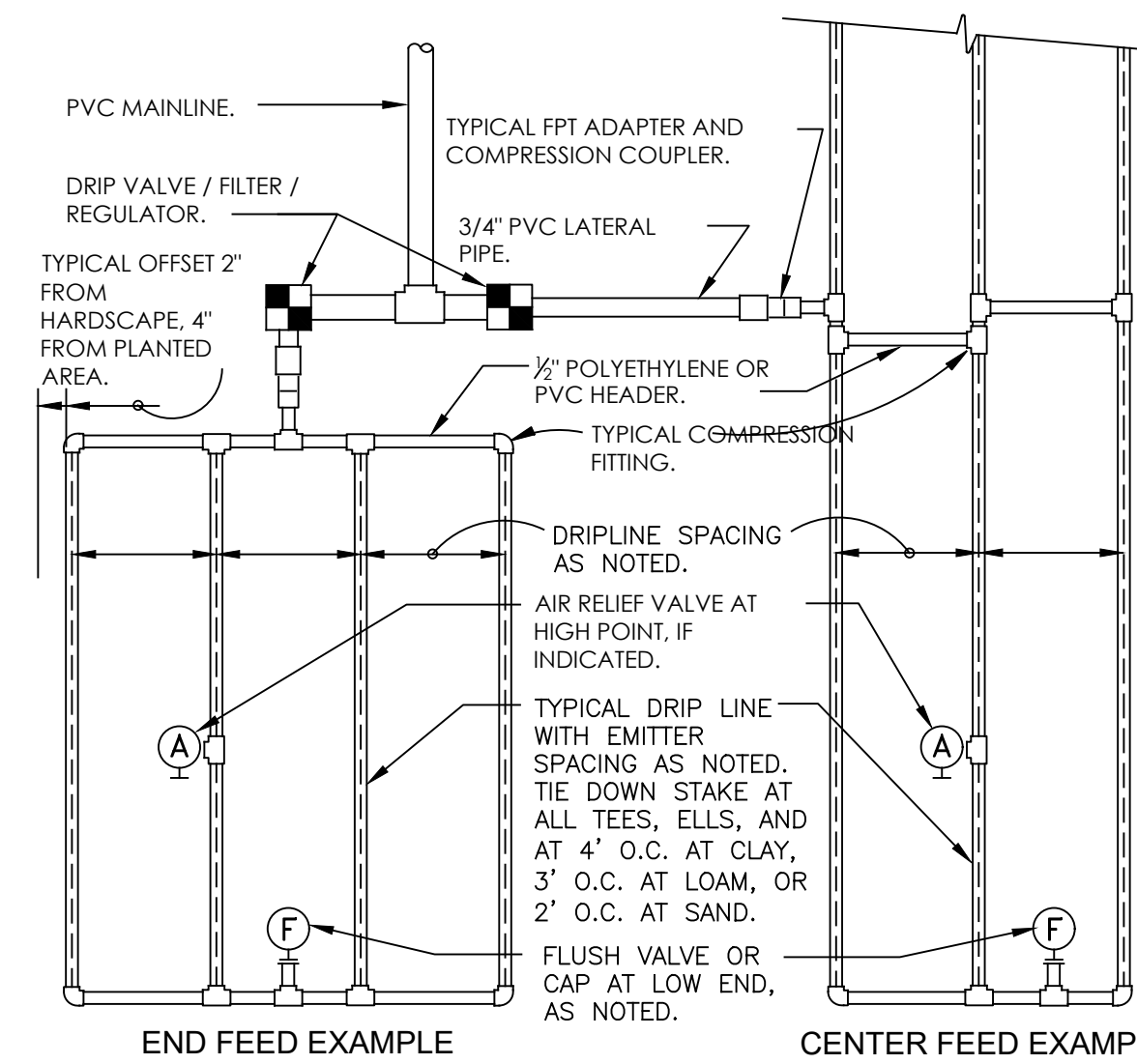
T-IR-EQU-01

2 SLEEVE DETAIL
NOT TO SCALE

T-IR-EQU-02

3 DRIP CONTROL ZONE KIT
NOT TO SCALE

T-IR-DRF-01



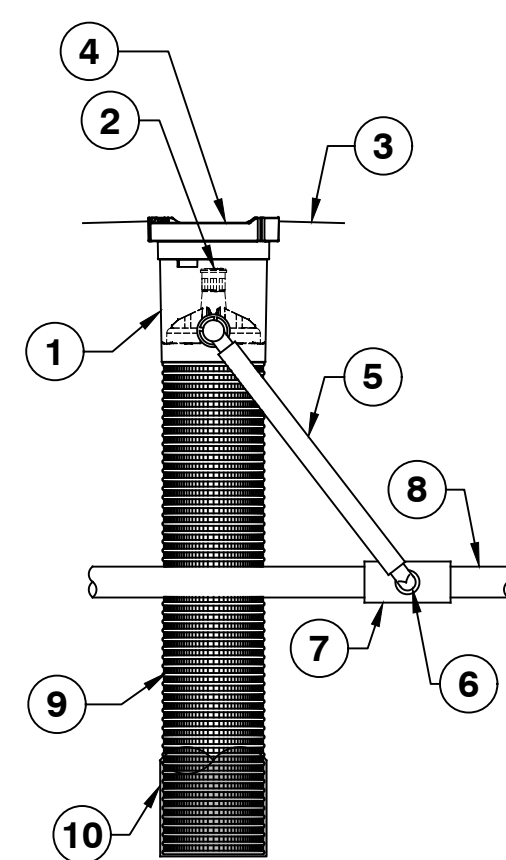
PSI	MAXIMUM LATERAL LENGTH (FEET)					
	EMITTER FLOW RATE GPH					
	12" SPACING		18" SPACING		24" SPACING	
10	125	96	175	135	218	171
20	249	191	350	171	442	340
30	307	236	434	333	550	422
40	350	268	495	380	627	171
50	125	96	175	135	218	171
60	125	96	175	135	218	171

EMITTER SPACING	LATERAL SPACING	EMITTER FLOW RATE	
		0.6	0.9
12	12	0.96	1.44
18	18	0.69	1.03
24	24	0.28	0.41

EMITTER FLOW	LATERAL FLOW PER 100 FT (GPM)		
	12" SPACING	18" SPACING	24" SPACING
0.6 GPH	1.0 GPM	0.67 GPM	0.50 GPM
0.9 GPH	1.5 GPM	1.0 GPM	0.75 GPM

SCHEDULE 40 PVC HEADER SIZE	MAXIMUM FLOW PER ZONE	
	MAX GPM	PSI LOSS
1/2"	4.7 GPM	7.7 PSI
3/4"	8.3 GPM	5.6 PSI
1"	13.5 GPM	4.2 PSI
1-1/2"	33.9 GPM	2.9 PSI
2"	52.4 GPM	1.9 PSI

- SLOPED CONDITION NOTE:
1. DRIPLINE LATERALS SHOULD FOLLOW THE CONTOURS OF THE SLOPE WHENEVER POSSIBLE.
 2. INSTALL AIR RELIEF VALVE AT HIGHEST POINT.
 3. NORMAL SPACING WITHIN THE TOP 2/3 OF SLOPE.
 4. INSTALL DRIPLINE AT 25% GREATER SPACING AT THE BOTTOM 1/3 OF THE SLOPE.
 5. WHEN ELEVATION CHANGE IS 10 FT OR MORE, ZONE THE BOTTOM 1/3 ON A SEPARATE VALVE.



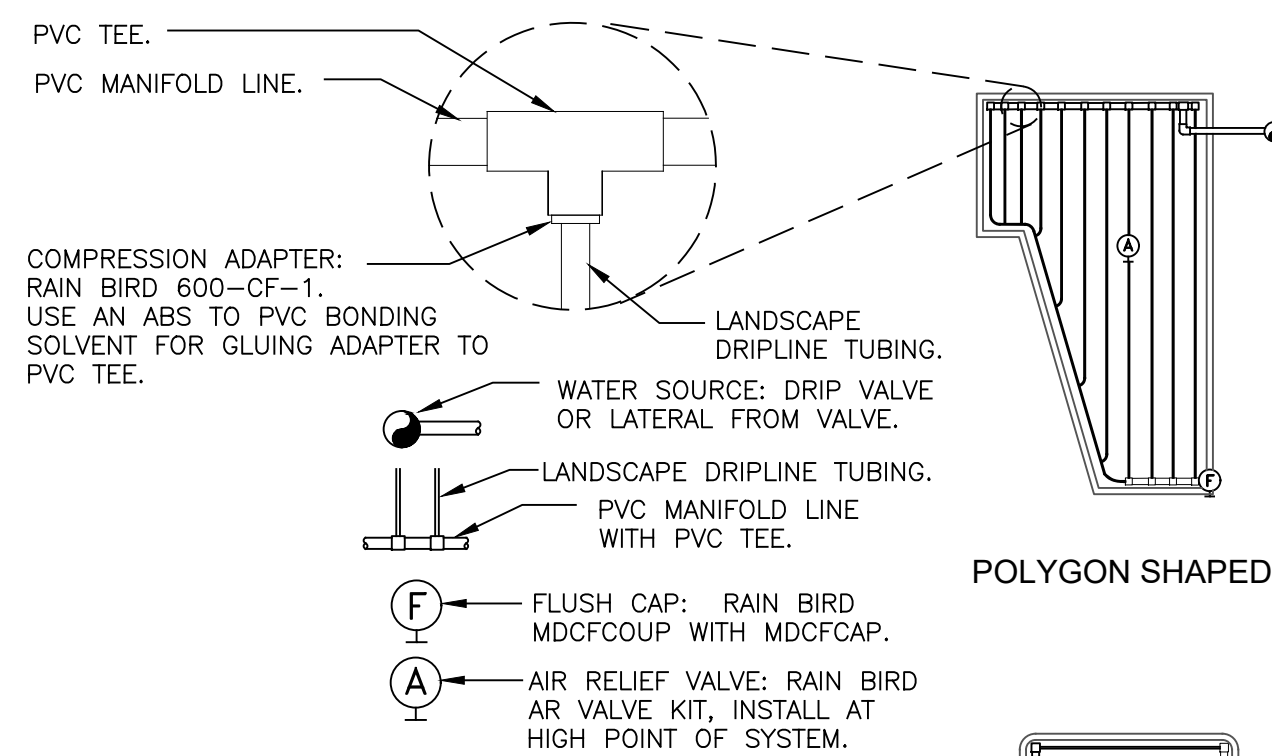
- RAIN BIRD**
- 1 ROOT WATERING SYSTEM: RAIN BIRD RWS-B-C-1401 (INCLUDES RETAINER, 3/8" (91.4 cm) TUBE, 0.25 GPM (0.95 L/M) BUBBLER & INTEGRATED CHECK VALVE, 4" (101.2 cm) GRATE, VEGETABLE SWING ASSEMBLY WITH 1/2" (1.3 cm) MPT INLET)
 - 2 BUBBLER: RAIN BIRD 1401 0.25 GPM (0.95 L/M) (INCLUDED)
 - 3 FINISH GRADE/TOP OF MULCH
 - 4 4" (101.2 cm) LOCKING GRATE (INCLUDED)
 - 5 12" (30.5 cm) SWING ASSEMBLY (INCLUDED)
 - 6 1/2" (1.3 cm) MALE NPT INLET (INCLUDED)
 - 7 PVC SCH 40 TEE OR EL
 - 8 PVC OR POLYETHYLENE LATERAL PIPE
 - 9 4" (101.2 cm) WIDE X 3/8" (91.4 cm) LONG RIGID BASKET WEAVE CANISTER (INCLUDED)
 - 10 OPTIONAL SOCK (RWS-SOCK) FOR SANDY SOILS

- NOTES:
1. 4" (101.2 cm) GRATE IS ALSO AVAILABLE IN PURPLE (RWS-GRATE-P).
 2. INSTALL PRODUCT SO THAT THE GRATE IS EVEN WITH FINISH GRADE OR TOP OF MULCH.
 3. OPTIONAL SAND SOCK (RWS-SOCK) IS 3/4" (19.0 cm) IN LENGTH TO COVER MESH BASKET AREA.
 4. WHEN INSTALLING IN EXTREMELY HARD OR CLAY SOILS, ADD 1/4" (1.9 cm) GRAVEL UNDER AND AROUND THE UNIT TO ALLOW FASTER WATER INFILTRATION AND ROOT PENETRATION.
 5. ONCE RWS HAS BEEN INSTALLED, FILL THE BASKET WITH PEA GRAVEL BEFORE LOCKING LID.

4 ROOT WATERING SYSTEM-B-C-1401
NOT TO SCALE

FX-IR-RB-DRIP-06

5 TYPICAL RAIN BIRD DRIPLINE REQUIREMENTS
3" = 1'-0"



POLYGON SHAPED

HOURGLASS SHAPED

ODD SHAPED

DOGBONE SHAPED

"C" SHAPED

CURVED POLYGON

CORNER SHAPED



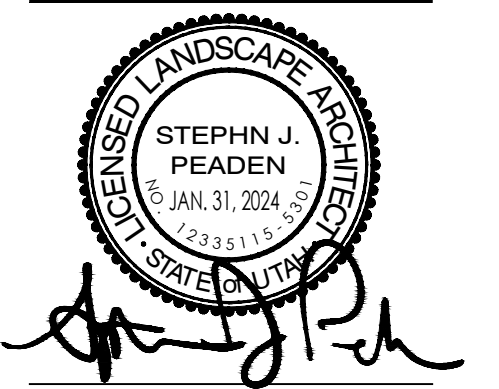
Think Architecture

Architecture
Interior Design
Landscape Architecture
Land Planning
Construction Management

7927 High Point Parkway, Suite 300
Sandy, UT 84094
Ph: 801.269.0055
Fax: 801.269.1425
www.thinkaec.com

The designs shown and described herein including all technical drawings, graphic representation & models thereof, are proprietary & can not be copied, duplicated, or commercially exploited in whole or in part without the sole and express written permission from ASWN+JA Architects, Inc.

These drawings are available for limited review and evaluation by clients, consultants, contractors, government agencies, vendors, and office personnel only in accordance with this notice.



MAGNA MANTLE PARK
9094 W MAGNA MAIN ST
MAGNA, UT 84044

PROJECT NO. 23088
DATE: JAN. 31, 2024
REVISIONS:

SHEET TITLE:
IRRIGATION DETAILS
SHEET NUMBER:
L301
LANDSCAPE

BID SET - JANUARY 31, 2024



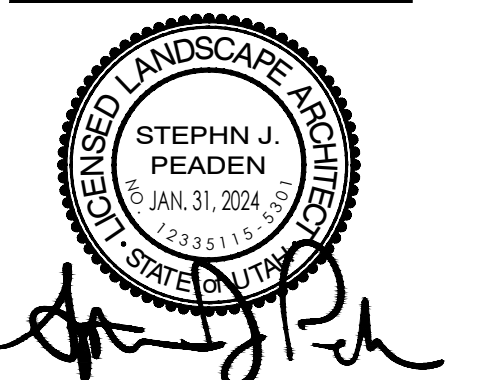
Think
Architecture

Architecture
Interior Design
Landscape Architecture
Land Planning
Construction Management

7927 High Point Parkway, Suite 300
Sandy, UT 84094
Ph: 801.269.0055
Fax: 801.269.1425
www.thinkaoc.com

The designs shown and described herein including all technical drawings, graphic representation & models thereof, are proprietary & can not be copied, duplicated, or commercially exploited in whole or in part without the sole and express written permission from ASWN+JA Architects, Inc.

These drawings are available for limited review and evaluation by clients, consultants, contractors, government agencies, vendors and office personnel only in accordance with this notice.



MAGNA MANTLE PARK
9094 W MAGNA MAIN ST
MAGNA, UT 84044

PROJECT NO. 23088
DATE: JAN. 31, 2024
REVISIONS:

BID SET - JANUARY 31, 2024
SHEET TITLE:
LIGHTING PLAN
SHEET NUMBER:
L500
LANDSCAPE

REFERENCE NOTES SCHEDULE

SYMBOL	LIGHTING DESCRIPTION	DETAIL
LI-02	LIGHT POST: ARCLUCE KRANE DOUBLE LIGHT FITTING WITH LED, 4000K, CRI>80 POST HEIGHT: 16' COLOR: GREY - 16	

LANDSCAPE LIGHTING NOTES

- CONTRACTOR TO INSTALL A COMPLETE NEW AND OPERATIONAL LIGHTING SYSTEM WITHIN THE LIMIT OF WORK. INSTALL FIXTURES AS INDICATED PER MANUFACTURER'S RECOMMENDATIONS FOR MAXIMUM EFFECT OF TREES, PLAZA, WALKWAY AND MONUMENT.
- THE LANDSCAPE LIGHTING SYSTEM TO INCLUDE FIXTURES, WIRING, TRANSFORMERS, CONDUITS, AND SLEEVES AND OTHER APPURTENANCES APPROPRIATE FOR THE LANDSCAPE LIGHTING SYSTEM.
- WORK SHALL CONFORM WITH APPLICABLE STANDARDS AND CODES.
- CONTRACTOR TO INSTALL LIGHTING WITH WIRING AND TRANSFORMERS TO MAINTAIN APPROPRIATE WATTAGE FOR EACH FIXTURE.
- IT IS THE RESPONSIBILITY OF THE CONTRACTOR TO BECOME FAMILIAR WITH THE CONDITIONS OF THE SITE INCLUDING GRADES, LOCATIONS OF UTILITIES AND SITE IMPROVEMENTS.
- CONTRACTOR TO SUBMIT SHOP DRAWINGS TO OWNERS REP. FOR APPROVAL OF THE PROPOSED LIGHTING SYSTEM PRIOR TO INSTALLATION.
- TRANSFORMER LOCATIONS TO BE COORDINATED WITH AND APPROVED BY THE OWNER'S REP. INSTALL TRANSFORMERS PER MANUFACTURER'S RECOMMENDATIONS.
- TRANSFORMERS TO BE BY KICHLER LANDSCAPE, MODELS: 15PR600SS AND 15PR300SS.
- LIGHT FIXTURE LOCATIONS TO BE APPROVED BY LANDSCAPE ARCHITECT.
- CONTRACTOR TO COORDINATE WITH GENERAL CONTRACTOR 120V AC ELECTRICAL POWER SOURCE AT THE TRANSFORMER LOCATIONS.
- ALL UNDERGROUND WIRING TO BE PLACED IN CONDUITS OF ADEQUATE SIZE, BURY 18".
- ALL UNDERGROUND WIRING SPLICES TO BE LOCATED IN DIRECT BURIAL JUNCTION BOXES.
- CONTRACTOR TO PROVIDE AS-BUILT DRAWINGS OF ENTIRE LANDSCAPE LIGHTING SYSTEM.
- LIGHT LOCATIONS ARE SHOWN SCHEMATICALLY. LOCATE LIGHTS PER MANUFACTURER'S RECOMMENDATIONS FOR MAXIMUM EFFECT ON TREES AND PLANTS.
- SEE PLANTING PLAN FOR PLANT TYPES AND LOCATIONS.
- KICHLER LANDSCAPE LIGHTING FIXTURES, TRANSFORMERS AND EQUIPMENT AVAILABLE THROUGH LIGHTING SPECIALISTS, SALT LAKE CITY, UTAH. TELEPHONE: 801.566.1324.
www.LIGHTINGSPECIALISTS.COM. SEE ALSO www.KICHLER.COM/ LANDSCAPE.

