



# Proposed 2020 Transportation Funding

Helen Peters | Director of Regional Planning & Transportation

# Status Regional Transportation Fund (4<sup>th</sup> Quarter) Revenue

---

# 4<sup>th</sup> Quarter Revenue

- **October 1, 2018 – June 30, 2019**

- 100% of the 0.25%
- \$47,694,433

- **June 1, 2019 – December 31, 2019**

- 0.05% of the 0.25%
- \$7,158,862

**Total \$54,853,295 allocated**

- **Current 4<sup>th</sup> Quarter Distribution**

- UTA – 0.10%
- Cities – 0.10%
- Salt Lake County 0.05%

- **Salt Lake County**

- 2020 - \$13,957,748
- 2021 - \$16,291,512
- 2022 Projected - \$16,400,000

# Allowable Uses of Local Option Sales and Use Tax Revenue

## 59-12-2212.2 Allowable uses of local option sales and use tax revenue

Utah Code

**Effective 7/1/2019**

### **59-12-2212.2 Allowable uses of local option sales and use tax revenue.**

- (1) Except as otherwise provided in this part, a county, city, or town that imposes a local option sales and use tax under this part may expend the revenue generated from the local option sales and use tax for the following purposes:
  - (a) the development, construction, maintenance, or operation of:
    - (i) a class A road;
    - (ii) a class B road;
    - (iii) a class C road;
    - (iv) a class D road;
    - (v) traffic and pedestrian safety infrastructure, including:
      - (A) a sidewalk;
      - (B) curb and gutter;
      - (C) a safety feature;
      - (D) a traffic sign;
      - (E) a traffic signal; or
      - (F) street lighting;
    - (vi) streets, alleys, roads, highways, and thoroughfares of any kind, including connected structures;
    - (vii) an airport facility;
    - (viii) an active transportation facility that is for nonmotorized vehicles and multimodal transportation and connects an origin with a destination; or
    - (ix) an intelligent transportation system;
  - (b) a system for public transit;
  - (c) all other modes and forms of conveyance used by the public;
  - (d) debt service or bond issuance costs related to a project or facility described in Subsections (1)(a) through (c); or
  - (e) corridor preservation related to a project or facility described in Subsections (1)(a) through (c).
- (2) Any revenue subject to rights or obligations under a contract between a county, city, or town and a public transit district entered into before January 1, 2019, remains subject to existing contractual rights and obligations.

Enacted by Chapter 479, 2019 General Session

# Select Projects Funded by 4<sup>th</sup> Quarter

Projects included roadway, transit, and active transportation improvements:

- **Draper** – Point of the Mountain Transit Alternatives Analysis
- **Holladay** – 3900 South from 2300 East to I-215 roadway improvements
- **Riverton** – 12600 South / Bangerter Highway interchange
- **South Jordan** – Construct Midas Creek Trail and connect to Midas Creek Park
- **West Valley City** – New road construction along 2550 South between 5600 West to 7200 West
- **Kearns Metro Township** – 4700 South Reconstruction and Widening
- **Midvale** – Center Street TRAX Station Crosswalk

# Map of Projects

- [Regional Transportation Choice Funds \(4th Quarter\)](#)

# Mayor's Recommendations: Focus on Salt Lake County Active Transportation Priorities

## Salt Lake County Parks & Recreation Needs Assessment

- Conducted every 5 years to guide park and recreational planning and construction

**Active Transportation infrastructure and the purchase of land for active transportation is a high priority**

**2012**

**2017**

**2021**

# Parks and Recreation Project

## Funded with 4<sup>th</sup> Quarter Funds (whole or in part)

**Jordan River  
Recreational Area**

**4<sup>th</sup> Quarter  
Funds: \$245,313**

**Location:  
Approximately 3900  
South 1200 West**



Before – looking west along future trail corridor



After – looking west along nearly finished trail



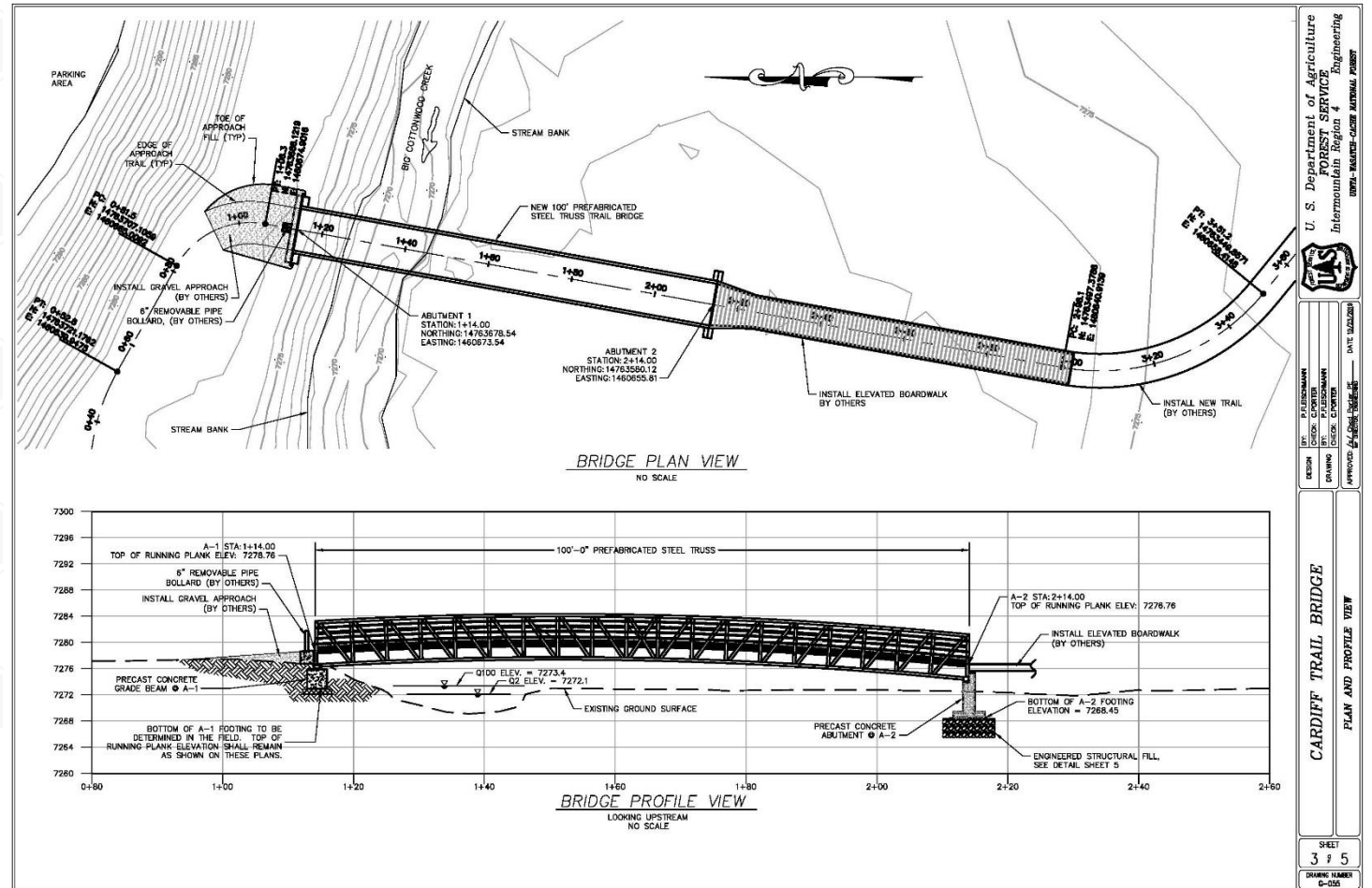
# Parks and Recreation Project Funded with 4th Quarter Funds (whole or in part)

## Cardiff Trail Bridge

Total project cost: \$673,345

4<sup>th</sup> Quarter funds: \$100,000

Location: 9 miles east from mouth of Big Cottonwood Canyon



U. S. Department of Agriculture  
Natural Resources Service  
Intermountain Region 4  
SALT LAKE COUNTY  
REGIONAL DEVELOPMENT  
SHEET  
3 of 5  
DRAWING NUMBER  
C-055

# Parks and Recreation Projects Funded with 4<sup>th</sup> Quarter Funds (whole or in part)

## White City Canal Trail

Total project cost: \$3,716,950

4<sup>th</sup> Quarter funds:

\$2,387,500

Locations:

Crossing at Galena Drive

Trail through Big Bear Park

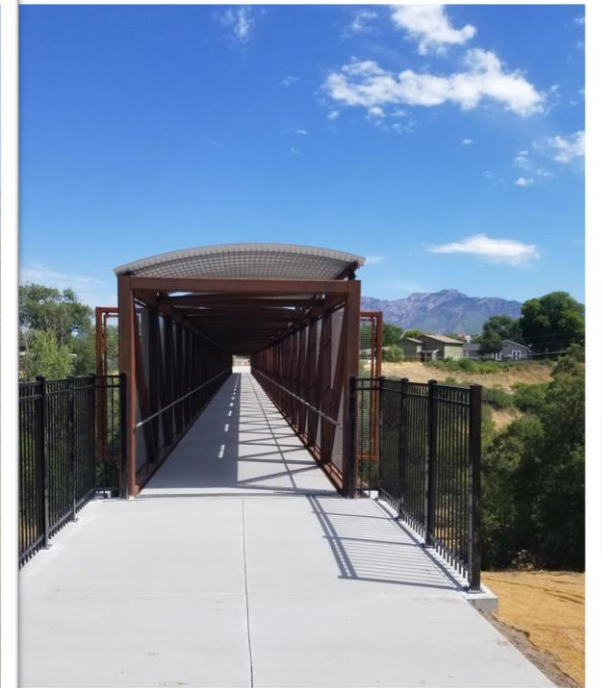


# Parks and Recreation Projects Funded with 4<sup>th</sup> Quarter Funds (whole or in part)

**White City Canal Trail and Bridge**

**Project Cost: \$3,716,950; 4<sup>th</sup> Quarter funds: \$2,387,500**

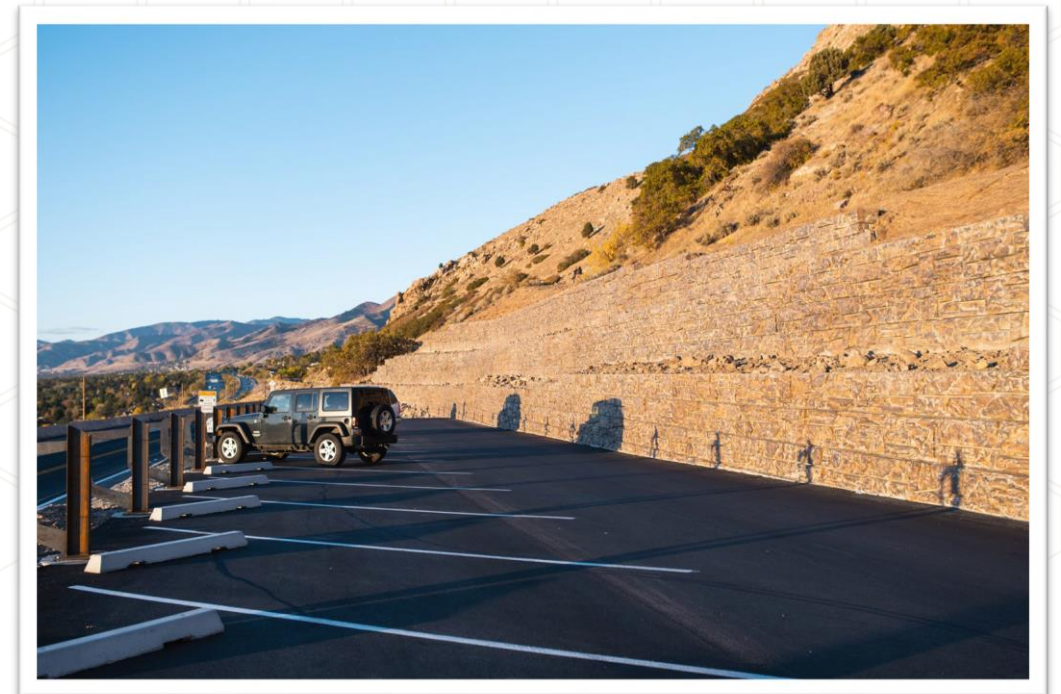
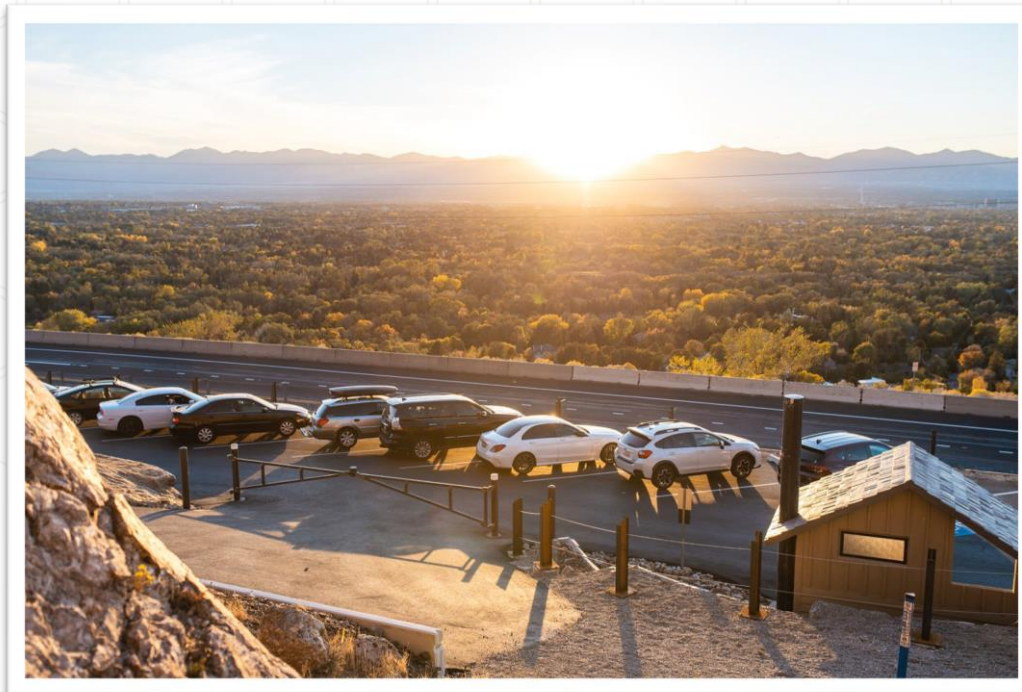
**Location: Dimple Dell Regional Park at approximately 1100 East**



# Parks and Recreation Projects Funded with 4<sup>th</sup> Quarter Funds (whole or in part)

**Mt Olympus Trailhead | Total project cost: \$2,680,000; 4<sup>th</sup> Quarter funds: \$1,720,000**

Location: Approximately 5425 South Wasatch Blvd

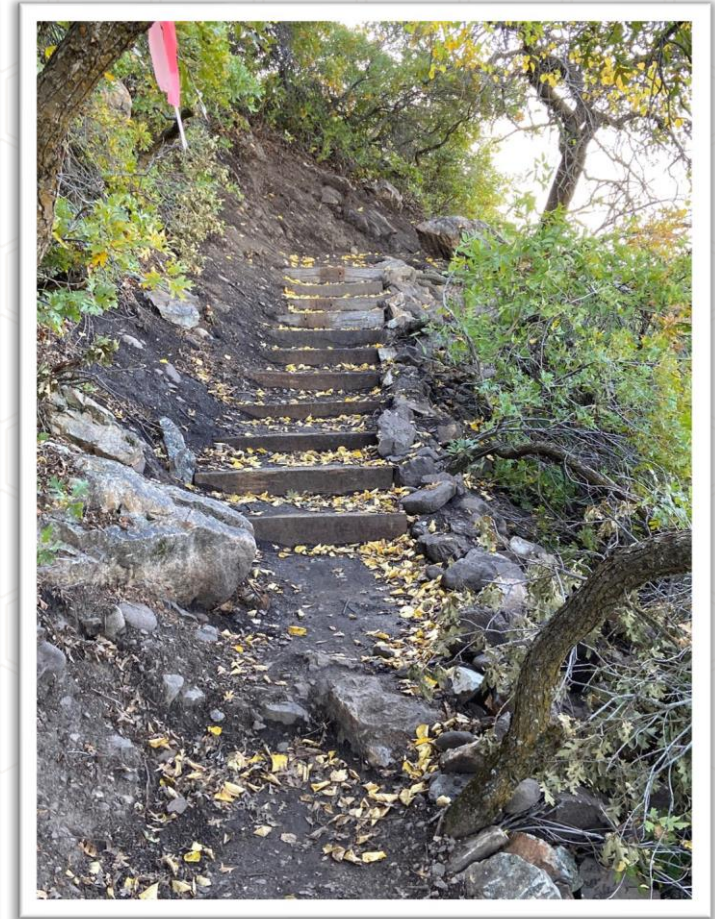


# Parks and Recreation Projects Funded with 4<sup>th</sup> Quarter Funds (whole or in part)

**Mt Olympus Trailhead – Trail Realignment**

**2020 4<sup>th</sup> Quarter funds: \$25,000**

Location: Approximately 5425 South Wasatch Blvd



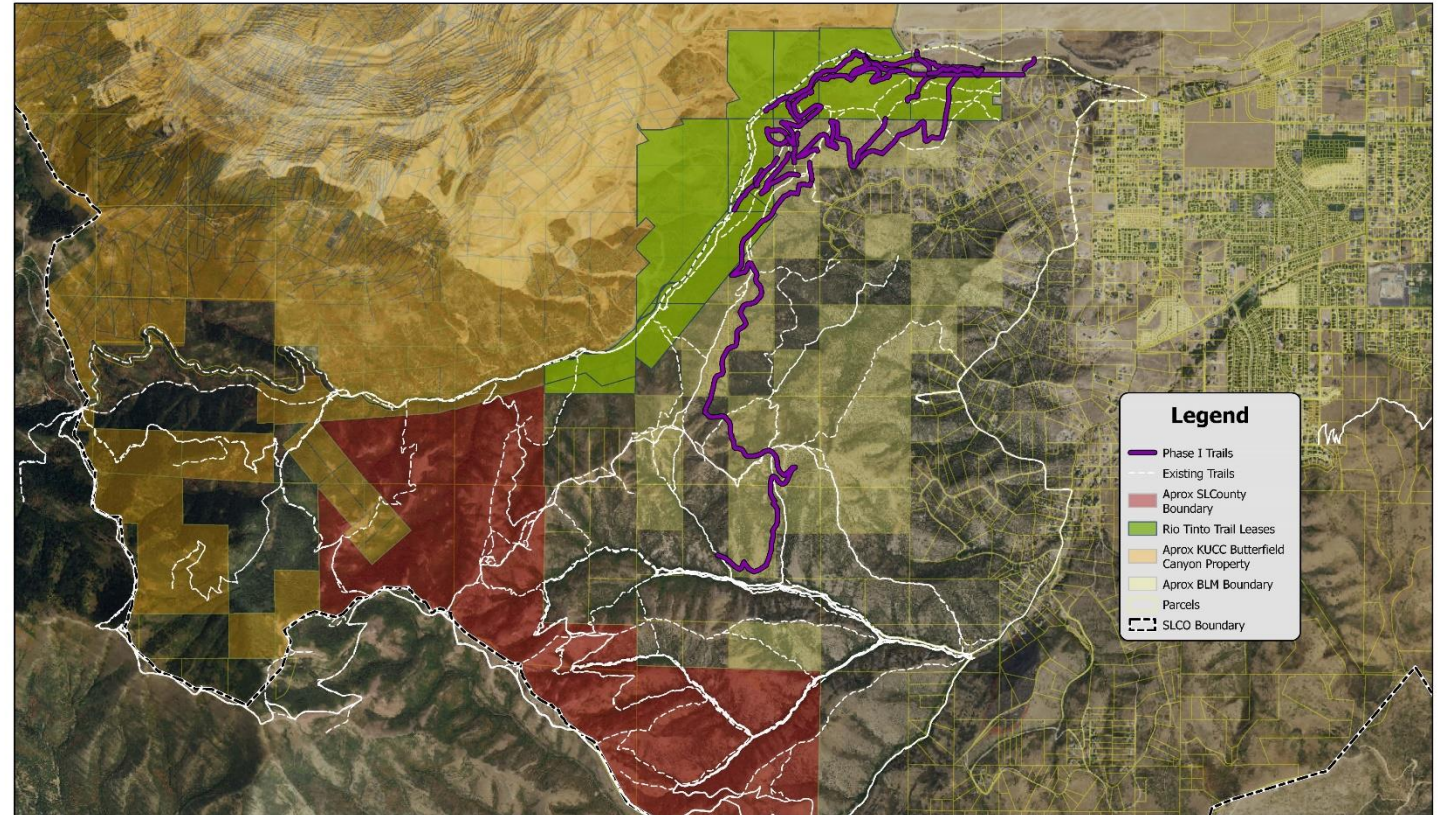
# Parks and Recreation Project

## Funded with 4<sup>th</sup> Quarter Funds (whole or in part)

Rose / Yellow Fork / Butterfield  
Canyons Recreation Area

Total project cost: \$1,996,730

4<sup>th</sup> Quarter funds: \$405,000



# Parks and Recreation Project

## Funded with 4<sup>th</sup> Quarter Funds (whole or in part)

Parley's Trail 900 West to the Jordan River Trail

Total project cost: \$8,738,995  
4<sup>th</sup> Quarter funds: \$3,810,789

Location: Approximately  
900 West 2100 South



Parleys Trail - Site Plan  
900 West to Jordan River Parkway Trail

# Parks and Recreation Project

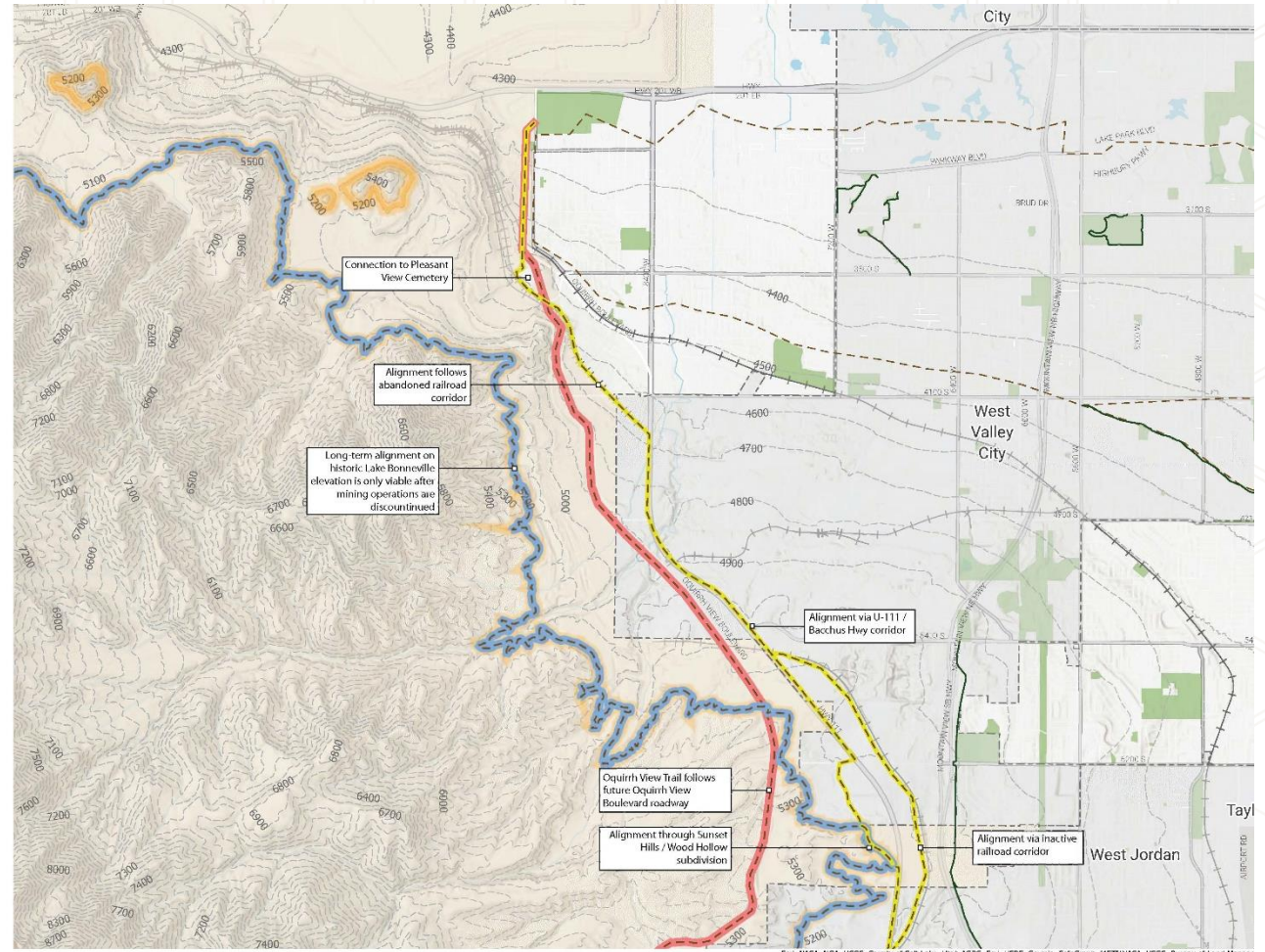
Funded with 4<sup>th</sup> Quarter Funds (whole or in part)

## West Side Bonneville Shoreline Trail Feasibility Study

4<sup>th</sup> Quarter funds: \$20,000

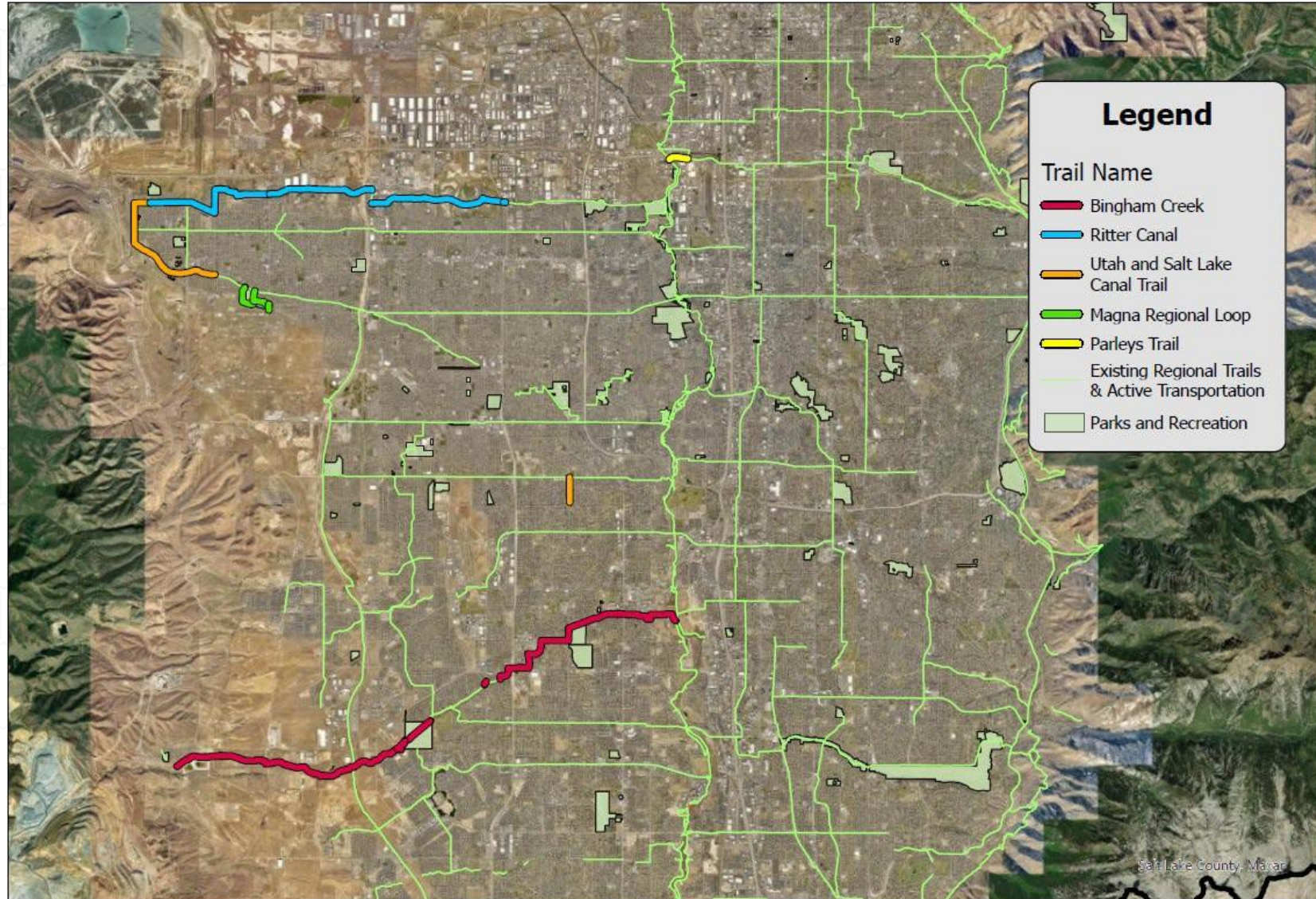
### WEST SIDE BONNEVILLE SHORELINE TRAIL FEASIBILITY STUDY NORTH VALLEY

- Existing/Proposed Trails
  - Existing Paved Use Path
  - Existing Natural Surface Trails
  - Proposed Natural Surface
- BST Alignment Options
  - Near-Term BST Alignment Options
  - Long-Term Preferred BST Alignment
  - NearLongTermBSTAlignment\_v04
  - Oquirrh View Trail Alignment
- Basemap Features
  - Historic Lake Bonneville Level
  - 100' Contours
  - Park / Open Space
  - Municipal Boundaries
  - Unincorporated Salt Lake County
  - BLM Land
  - Railroads

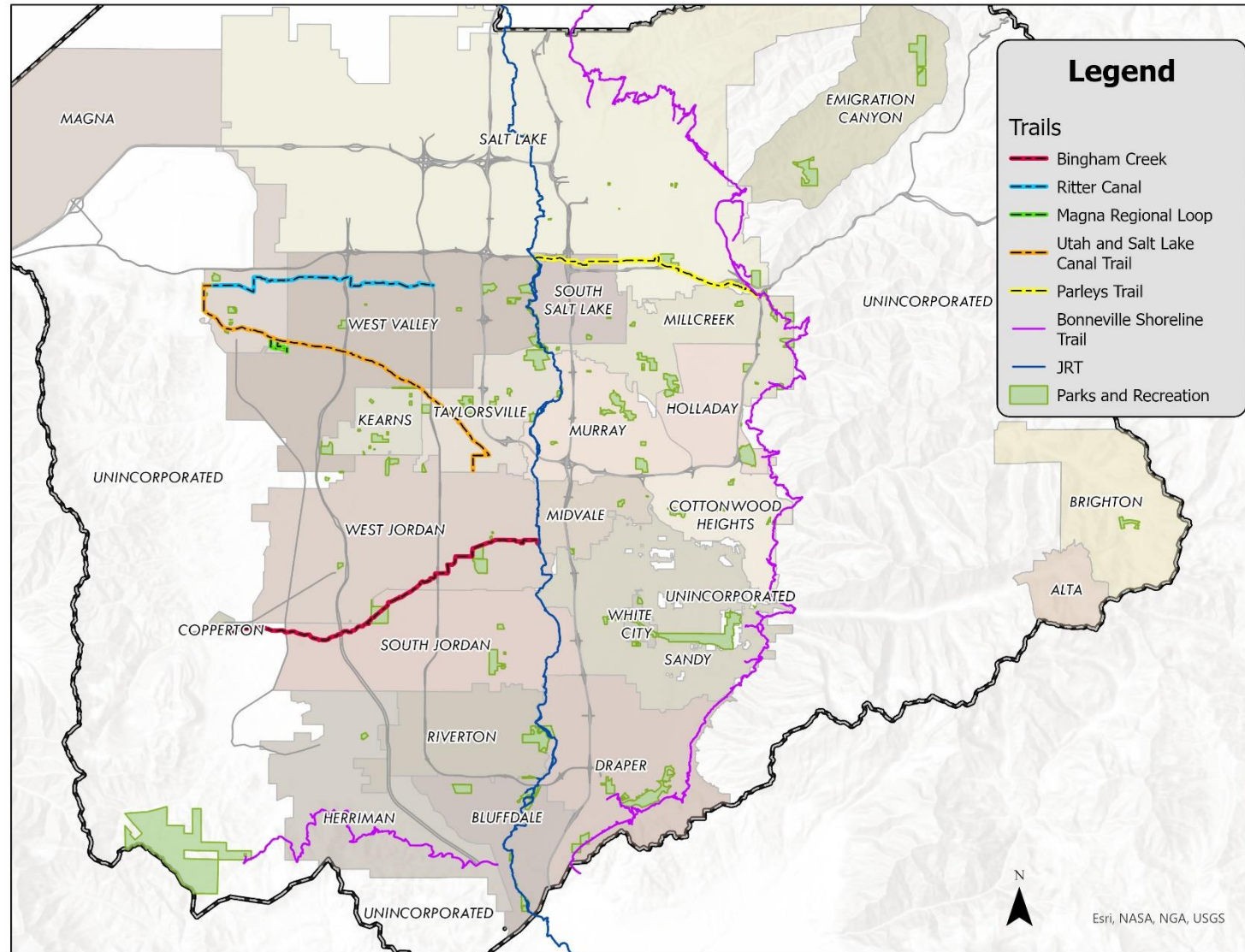




# Mayor's Proposed Active Transportation Projects



# Regional Trails



# Mayor's Recommendations for 2020 4<sup>th</sup> Quarter

## Funds

Phase	Trail Name	Length/Miles	From / To	Unit Cost	Scope of Work	Construction Estimate
Phase 1	Magna Regional Park Loop Trail	1	Magna Park to Ut&SL Canal Trail	\$700K/Mile	Design & Construct 10' Paved Trail	\$700,000
Phase 5	Ut&SL Canal Trail	2.8	8000 W to 2600 S (Magna Copper PK)	0	Design & Construct 12' Paved Trail	\$-
Phase 6	Ut&SL Canal Trail	1.07	4130 W to 3600 W / 5070 S	0	Design & Construct 12' Paved Trail	\$-
Phase 7	Ut&SL Canal Trail	1.12	Midway Dr. to 4100 W / 5400 S	0	Design & Construct 12' Paved Trail	\$-
Phase 8	Ut&SL Canal Trail	1.08	3200 W / 5400 S to 3140 W / 5400 S	0	Design & Construct 12' Paved Trail	\$-
Phase 9	Ut&SL Canal Trail	1.15	3140 W / 5400 S to 2700 W / 6200 S	0	Design & Construct 12' Paved Trail	\$-
Phase 10	Ut&SL Canal Trail	0.93	2700 W / 6200 S to 2700 W / 6600 S	\$750K/Mile	Design & Construct 12' Paved Trail	\$697,500
Last Phase	Parley's Trail 900 W to JRT	0.5	900 W to JRT	Lump Sum	Construction Contingency	\$750,000
Phase 1	Ritter Canal Trail	3	Bangerter Hwy to Decker Lake	\$200/Mile	Roadway Striping (Both Sides)	\$600,000
Phase 2	Ritter Canal Trail	1	Mountains View to 6400 West (fills gap)	\$750K/Mile	Design & Construct 10' Paved Trail	\$750,000
Phase 3	Ritter Canal Trail	1.5	7800 West to Magna Cooper Park	\$750K/Mile	Design & Construct 10' Paved Trail	\$1,125,000
Phase 1	Bingham Creek Regional Park Trail	0.72	Bingham Regional Park (10200 S / 4800 W)	\$700K/Mile	Construct 12' Paved Trail	\$504,000
Phase 2	Bingham Creek Regional Trail	0.56	Jordan River (8050 S / 1000 W) to 1300 W / 8195 S)	\$750K/Mile	Design & Construct 12' Paved Trail	\$420,000
Phase 3	Bingham Creek Regional Trail	0.91	1300 W / 8195 S to 8200 S / 1500 W	\$750K/Mile	Design & Construct 12' Paved Trail	\$682,500
Phase 4	Bingham Creek Regional Trail	0.48	1500 W / 8200 S to Redwood Road (1700 W) (stripping & signs only)	\$750K/Mile	Design & Construct 12' Paved Trail	\$360,000
Phase 5	Bingham Creek Regional Trail	1.03	Redwood Road (1700 W / 8200 S) to 2700 W / 8400 W (stripping and signs only)	\$750K/Mile	Design & Construct 12' Paved Trail	\$772,500
Phase 6	Bingham Creek Regional Trail	0.23	2700 W / 8400 S to 2700 W / 8600 S (Gardner Lane, signs only)	\$750K/Mile	Design & Construct 12' Paved Trail	\$172,500
Phase 7	Bingham Creek Regional Trail	0.5	2700 W / 8600 S to 3200 W / 8600 S (stripping & signs only)	\$750K/Mile	Design & Construct 12' Paved Trail	\$375,000
Phase 8	Bingham Creek Regional Trail	0.53	3200 W / 8600 S, via Haun Drive & Norris View Lane to Old Bingham Highway / 3600 W (stripping & signs only)	\$750K/Mile	Design & Construct 12' Paved Trail	\$397,500
Phase 9	Bingham Creek Regional Trail	0.55	Old Bingham Highway (8715 W) / 3600 S to Old Bingham Highway (8850 S) / 4000 W (stripping & signs only)	\$750K/Mile	Design & Construct 12' Paved Trail	\$412,500
Phase 10	Bingham Creek Regional Trail	0.4	4000 W / Old Bingham Highway to 4000 W / Teton Estates Drive (9150 S, stripping & signs only)	\$750K/Mile	Design & Construct 12' Paved Trail	\$300,000
Phase 11	Bingham Creek Regional Trail	0.11	4000 W / Teton Estates Drive to Teton Estates Dr. / Colter Bay Cir (4030 W, stripping & signs only)	\$750K/Mile	Design & Construct 12' Paved Trail	\$82,500
Phase 12	Bingham Creek Regional Trail	1.2	Bingham Creek Regional Park (10200 S / 4800 W) to Mountain View Corridor Trail (MVC, 10450 S / 6000 W)	\$750K/Mile	Design & Construct 12' Paved Trail	\$900,000
					<b>Subtotal</b>	<b>\$10,001,500</b>
<p><b>NOTES:</b></p> <p>The Magna Regional Park has a trail loop that has been graded and ready to pave. Paving the trail loop inside the park and making bridge connections to the canal trail remains unfinished.</p> <p>The Utah Salt Lake Canal Trail received State Funding through UDOT (3.2 Million) for Phases 5-9.</p> <p>The last phase of the Parley's Trail is out to bid. Bid opens on November 17. The Engineers bid estimates the bids will come in close to the project budget leaving a shortage of funds for construction contingency.</p> <p>The MSD is working with Rio Tinto to determine the Ritter Trail Alignment along the canal.</p> <p>The Bingham Creek Regional Trail will connect Bingham Regional Park to the Mountain View Corridor Trail. Additionally, this trail will link to two UTA Light Rail Stations. Daybreak has worked out a trail alignment from the Bingham Regional Park to the Mountain View Corridor.</p>						

# 4<sup>th</sup> Quarter Choice Transportation Funds Summary

Proposed 2022 Appropriation	Description	Amount
<b>Trail Maintenance</b>	Annual maintenance for more than 300 trail miles for which SLCo has O&M responsibility	\$1,000,000
<b>SLCo Regional Trails Master Plan Phase 2</b>	Determine current and future needs for diverse recreation opportunities that balance recreation and natural resources	\$250,000
<b>Upper Mill Creek Canyon Road Improvement Project (FLAP Grant match)</b>	Partial funding of the required local match of \$4.2M	\$2,500,000
<b>Trail Design and Construction</b>	See attached detailed list	\$10,001,500
	Subtotal	\$13,751,500
	Contingency	\$206,248
	<b>TOTAL</b>	<b>\$13,957,748</b>
	Actual 4 <sup>th</sup> Quarter Sales Tax Revenue (2020)	\$13,957,748

**QUESTIONS?**

---