



JORDAN VALLEY WATER
CONSERVANCY DISTRICT

Bart Forsyth
General Manager

Water Supply Issues Report

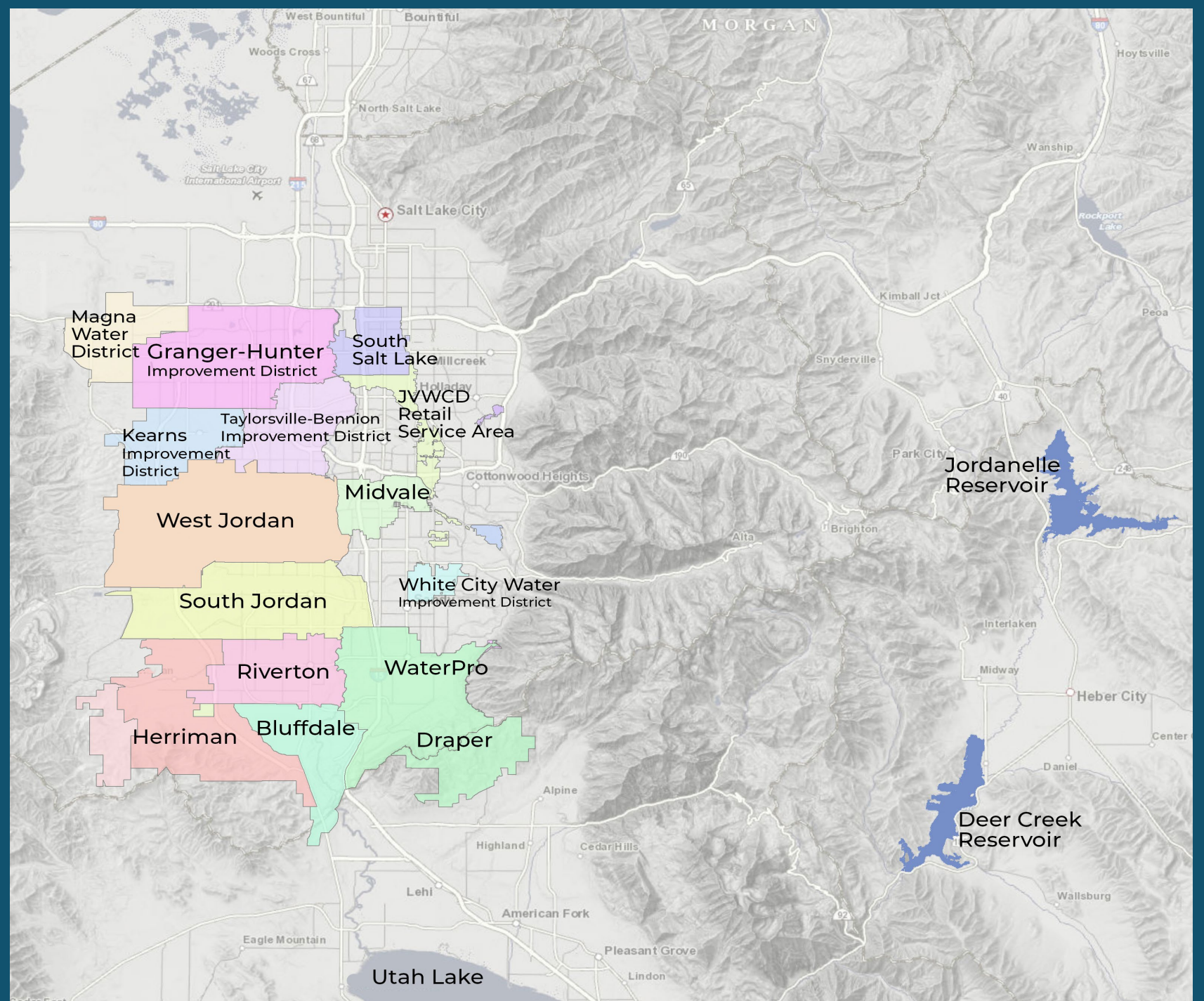
Salt Lake County Council
June 21, 2022

The highlighted areas on the map show JWCD's service area, which includes the following cities and water providers:

- Bluffdale City
- Department of Corrections
- Draper City
- Granger-Hunter Improvement District
- Herriman City
- Hexcel
- Kearns Improvement District
- Magna Water District
- Midvale City
- Riverton City
- City of South Jordan
- City of South Salt Lake
- Taylorsville-Bennion Improvement District
- Waterpro, Inc.
- City of West Jordan
- White City Water Improvement District
- Willowcreek Country Club

JWCD's retail service area also includes smaller portions of the following locations:

- City of Holladay
- Cottonwood Heights City
- Murray City
- Millcreek City
- Sandy City



JVWCD Board of Trustees



Corey L. Rushton
Chair

Karen D. Lang
Vice Chair

Mick M. Sudbury



A. Reed Gibby

Sherrie L. Ohrn

Dawn R. Ramsey



Lyle C. Summers
*Conservation Committee
Chair*

John H. Taylor *Finance
Committee Chair*

Barbara L. Townsend

JVWCD'S KEY SERVICES

Delivering Water



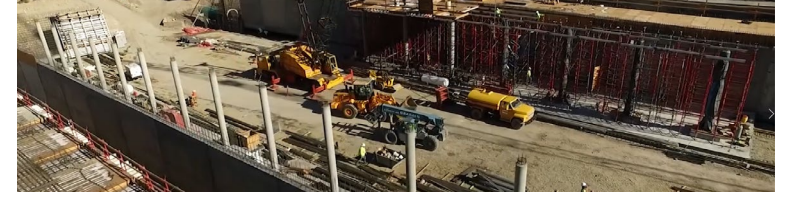
- Manage increasingly complicated water supply
- Treat water to exceed regulatory requirements
- Maintain growing and aging infrastructure

Managing Demand



- Promote efficient use of water through incentives, programs, and ordinances
- Encourage landscaping appropriate for Utah
- Develop a water conservation ethic

Developing Supply



- Identify most cost-effective water supply alternatives
- Plan and support water projects decades in advance of demand
- Secure funding for long-term water development projects



TOPICS TO BE ADDRESSED

- Drought
- Changing climate conditions
- Water conservation
- Water efficiency standards
- Integration of Water and Land Use Planning
- Capital infrastructure needs
- Water supply planning

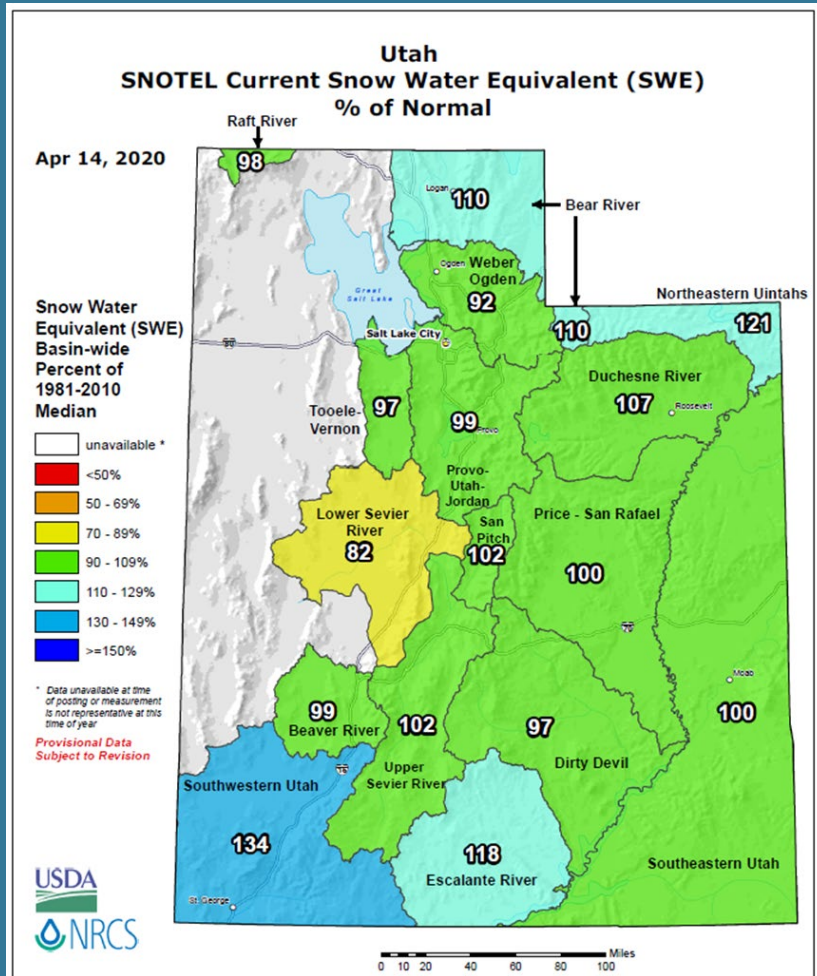


Drought

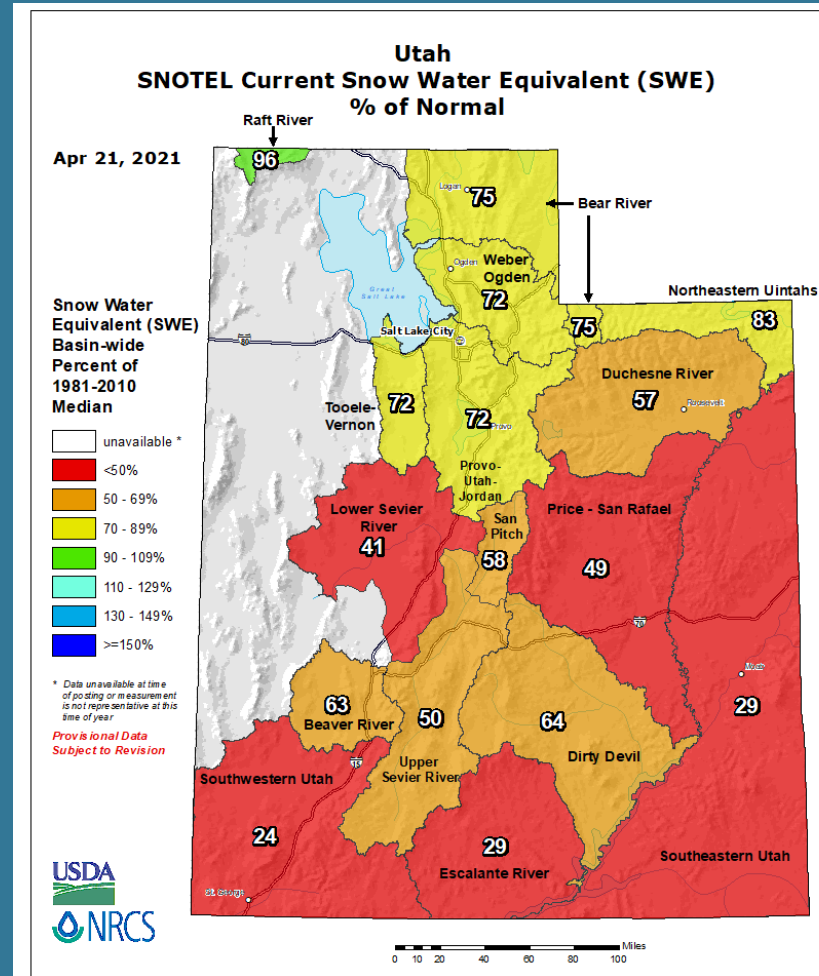




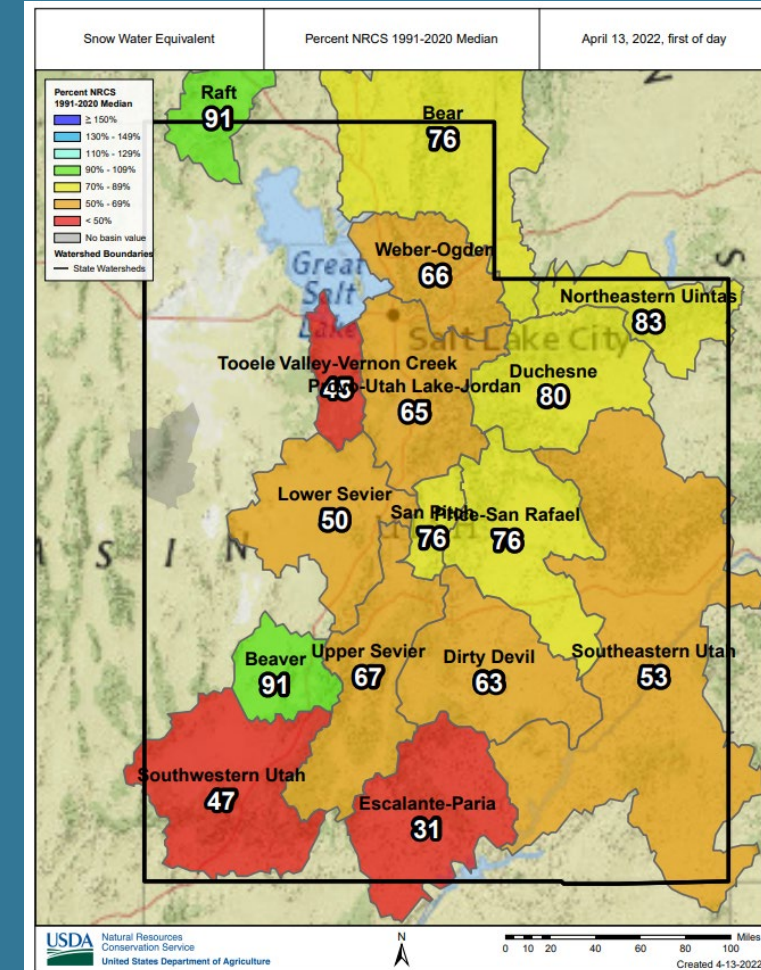
Snow Water Equivalent % of Median -- Mid April 2020, 2021, 2022



2020



2021



2022



Provo River Reservoirs Update

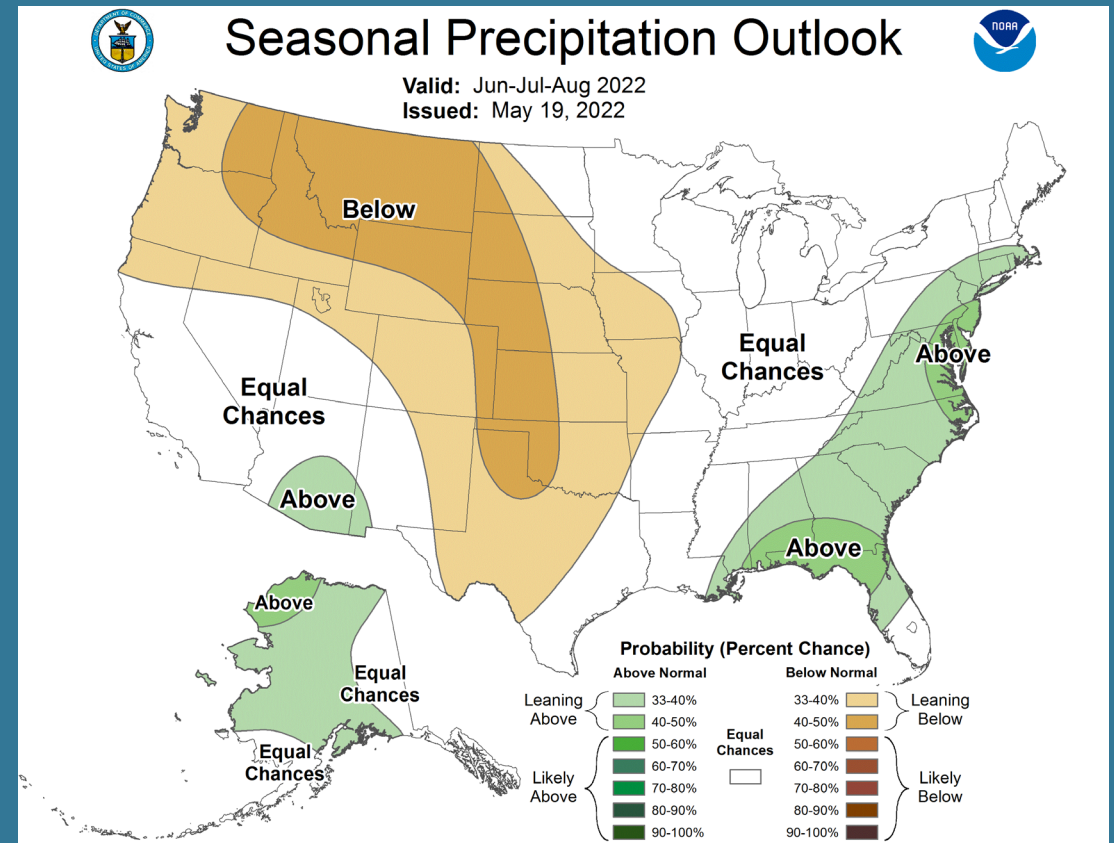
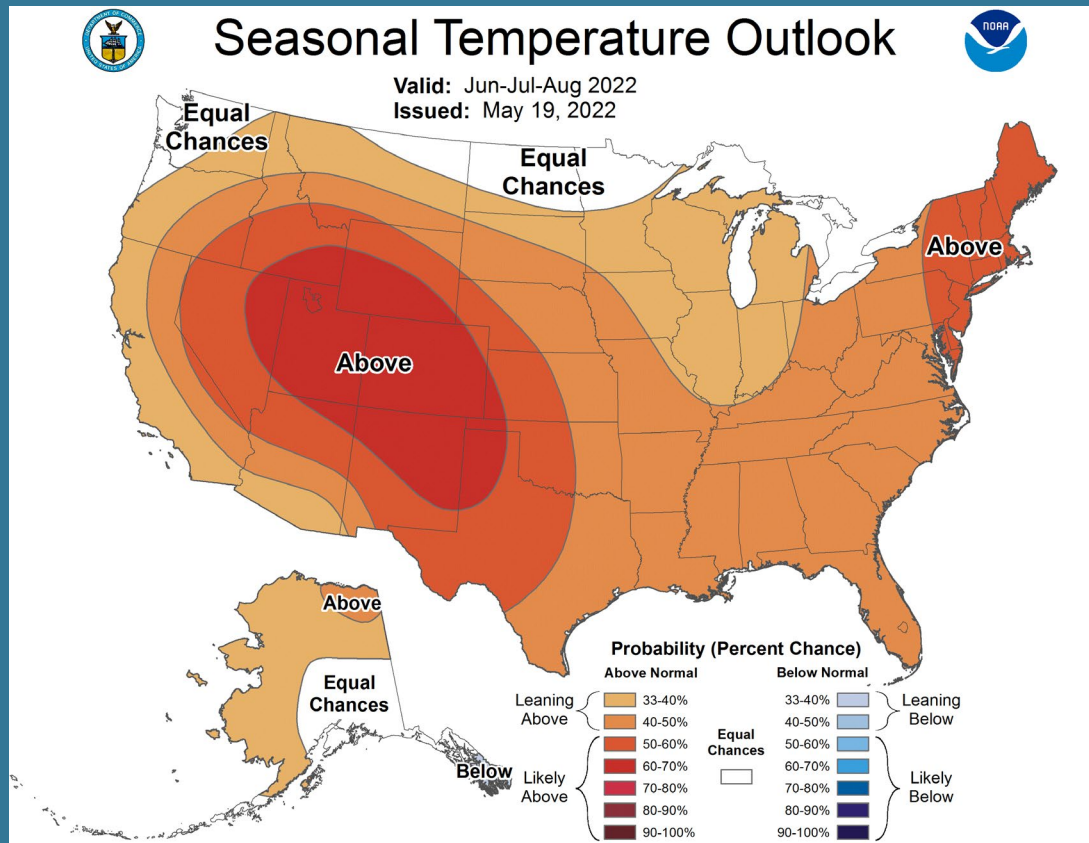
June 12, 2022

■ Current Month
■ Previous Year





Temperature and Precipitation Outlook June – August 2022





JORDAN VALLEY WATER
CONSERVANCY DISTRICT

Salt Lake County
Council

May 24, 2022

JVWCD Drought Contingency Plan

Drought Monitoring Committee
Recommendation for 2022
and Water Supply Outlook



Salt Lake County Council

Drought Monitoring Committee Members

Drought Monitoring Committee

City of Midvale

City of Bluffdale

Draper City

Herriman City

City of West Jordan

City of South Salt Lake

Magna Water District

Taylorsville-Bennion Improvement District

White City Water Improvement District

Granger-Hunter Improvement District

WaterPro/Draper Irrigation

Hexcel Corporation

Willow Creek Country Club

South Jordan City

Willow Creek Country Club



Salt Lake County Council

Drought Monitoring Committee Vote

Water Supply Restriction Level	Water Restriction Description	Water Demand Reduction Target	Triggering Criteria Applied to Water Supply Restriction Levels			Vote of Committee Members
			CUWCD Supply Availability (Jordanelle storage of CUP)	PRWUA Supply Allocation (in the Provo River Project)	Salt Lake Valley Groundwater Conditions	
Level 0 	Normal	None	at least 95% supply availability	At least an 80% supply allocation	3 year average diversions less than safe yield	—
Level 1 	Moderate	5 – 10%	At least a 95% supply availability	75-80% supply allocation	JV gw diversions to compensate for shortage exceeds 12,000 AF, or 3 year average exceeds safe yield	10
Level 2 	Severe	10 – 20%	At least 90-95% supply availability	75-80% supply allocation	JV gw diversions to compensate for shortage exceeds 16,000 AF, or 3 year average exceeds safe yield	4
Level 3 	Extreme	20 – 30%	At least 90-95% supply availability	<75% supply allocation	JV gw diversions to compensate for shortage exceeds 20,000 AF, or 3 year average exceeds safe yield	—
Level 4 	Critical/Exceptional	30 – 50%	Less than 90% supply availability	Less than 45% supply allocation	JV gw diversions to compensate for shortage exceeds 20,000 AF, or 3 year average exceeds safe yield	—



Salt Lake County Council

Drought and Drought Contingency Planning

At the May 11th JVWCD Board meeting, the Board approved establishing a Water Supply Restriction Level 1.



Salt Lake County Council

2022 Drought Messaging

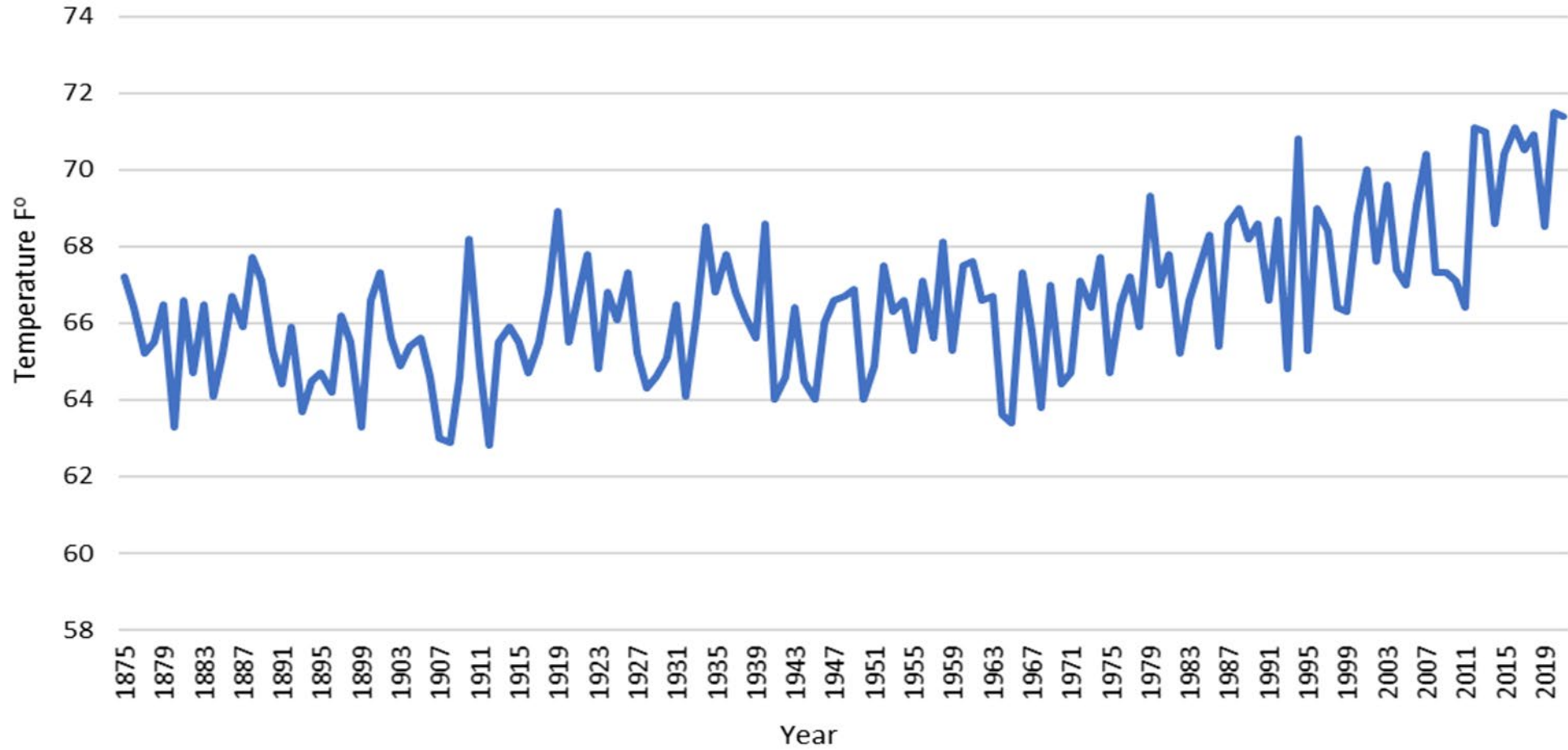
- Drought severity varies across the state of Utah
- Pursue effective and coordinated drought messaging
- Tips (take advantage of incentives)
 - Weekly Lawn Watering Guide ([Weekly Lawn Watering Guide – Conserve Water Utah](#))
 - Plan a landscape upgrade
 - Check your sprinkler system for leaks
 - Smart controller rebate
- Goal: Achieve at least a 10% voluntary reduction in water use

Changing Climate Conditions



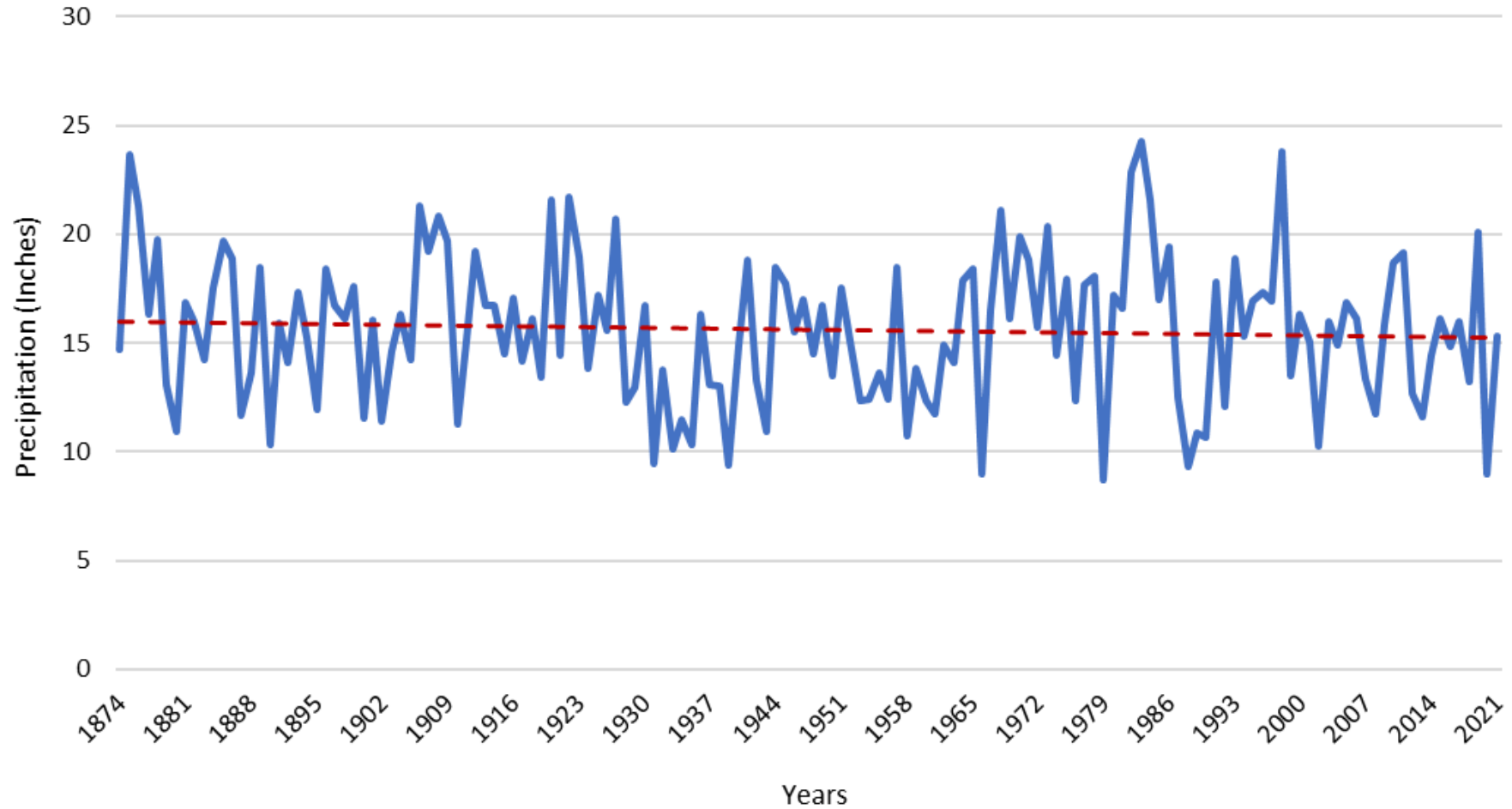


Average Temperature April 15 - October 15 Salt Lake City Area, UT 1875-2021





Annual Precipitation Salt Lake City International Airport

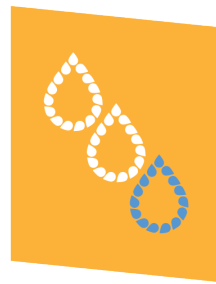


Water Conservation



Utah Water Savers

utahwatersavers.com



Apply today for a
FREE consultation or cash rebates!

(Programs available throughout most of JWCD's service area)



Cash rebates for homeowners who purchase a smart controller for their irrigation system.



Cash rebates for homeowners who replace toilets that were installed before 1994.



Cash rebates for homeowners who convert grass park strips to water-efficient designs.



Free consultations for homeowners wanting to improve the water efficiency of their yard.



Cash rewards and landscape plan reviews for those who complete Localscapes projects.



how do I **APPLY?**

Complete the online interest form at
JVWCD.ORG/LANDSCAPELEADERSHIPGRANT

Or email the following information to
GRANTS@JVWCD.ORG:

1. Applicant's contact information (name, phone, and email)
2. Project address and description
3. Estimated project start date and cost
4. Concept landscape plan (or detailed construction plans if available)
5. Estimated square footage (include breakdown of turf, planter bed, and hardscape areas)

APPLICANT REQUIREMENTS:

- Recipient must be a commercial business, builder/developer, institution, or HOA.
- Project must be located within the JWCD service area.
- Project must provide quantifiable water savings.
- Project must have high promotional, marketing, or press appeal.
- Landscape changes must be voluntary and not for the purpose of complying with a governmental code or policy.



example projects

Landscape LEADERSHIP grants

FOR BUILDERS · DEVELOPERS
COMMERCIAL BUSINESSES AND INSTITUTIONS
& HOMEOWNERS ASSOCIATIONS

*Funding for prominent,
water-efficient landscaping projects.*



JORDAN VALLEY WATER
CONSERVANCY DISTRICT

Conservation Garden Park

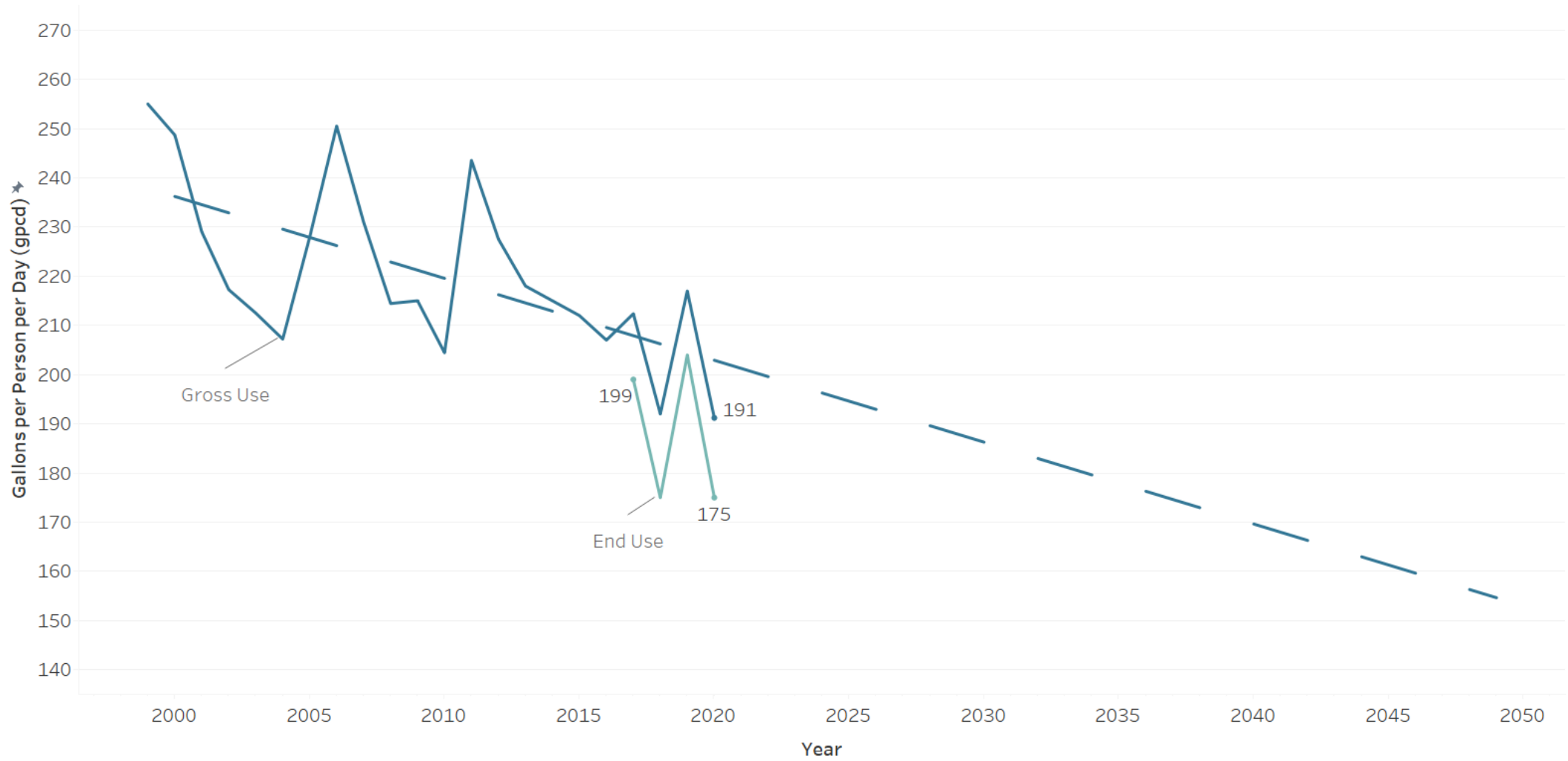
(8275 S. 1300 W. West Jordan, UT)



- With more than nine acres of exhibits, pathways and Utah-friendly plants, Conservation Garden Park is Salt Lake County's premier destination for information about water-efficient landscaping. Owned and operated by JWCD, the Garden is open year-round with free admission to all patrons.
- Classes, tours, educational exhibits, field trips, community events, plant database, and online education.



Jordan Valley Water Conservancy District Annual Gross & End Usage per Capita (gpcd)



Water Efficiency Standards



RESIDENTIAL LANDSCAPE STANDARDS

- Applicable to front and side yards.
- Lawn is designed as an open space and does not exceed 35% of the total landscaped area.
- Prohibit lawn in park strips and other narrow areas that are less than 8 feet wide.
- Drip irrigation is used in planting beds.
- Exceptions to these standards can be made in very small lot scenarios.



COMMERCIAL LANDSCAPE STANDARDS

- Outside of active recreation areas, keep lawn to 20% of the total landscaped area.
- Prohibit lawn in park strips, parking lot islands, or other narrow areas that are less than 8 feet wide.
- Keep lawn areas free of obstructions such as trees, signposts, and boulders; and avoid use on steep slopes.
- Drip irrigation is used in planting beds.
- Recommended to have enough plant materials to create at least 50% living plant cover at maturity.
- Submit new landscape projects to the municipality to ensure they meet water conservation requirements and guidelines.
- Certain special purpose landscape areas may receive variances to the standards based on need (ex. stormwater management areas)



Member Agency Adoption of Water Efficiency Standards

JVWCD's Water Efficiency Standards are comprehensive outdoor landscaping requirements intended for all new construction. The cities that have adopted or are in compliance with these standards have shown leadership in planning for the future and building drought-resilient communities.

Adopted

Herriman City

- December 19, 2020
- Adopted as City ordinance

South Jordan

- May 4, 2021
- Adopted as City ordinance

West Jordan

- June 9, 2021
- Adopted as City ordinance

Retail System

- June 9, 2021
- Adopted as JWCD policy

Bluffdale City

- July 14, 2021
- Adopted as City ordinance

Kearns Metro Township

- February 14, 2022
- Adopted as Township ordinance

West Valley City

- August 12, 2022
- Adopted by resolution

Integration of Water and Land Use Planning



SB 110: Water As a Part of General Plan



Sponsor: Sen. Mike McKell (passed)

Topic: Requires municipalities to incorporate a water use and preservation element in its General Plan

Impacts to JVVCD Member Agencies:

- ❖ The water use and preservation element to consider: the effect of development on water demand and infrastructure; methods of reducing water demand; and opportunities to modify operations to eliminate water waste, including:
 - ❖ Consultation with the water supplier
 - ❖ Considering regional conservation goals
 - ❖ Reviewing its water conservation plan
 - ❖ Making recommendations for water conservation policies and practices including water wise landscaping options and ordinances
 - ❖ Considering principles of sustainable landscaping
 - ❖ Looking at development trends that reduce the demand for water
 - ❖ Etc.

Capital Infrastructure Needs





Salt Lake County Council

Capital Projects Plan 2022 - 2026

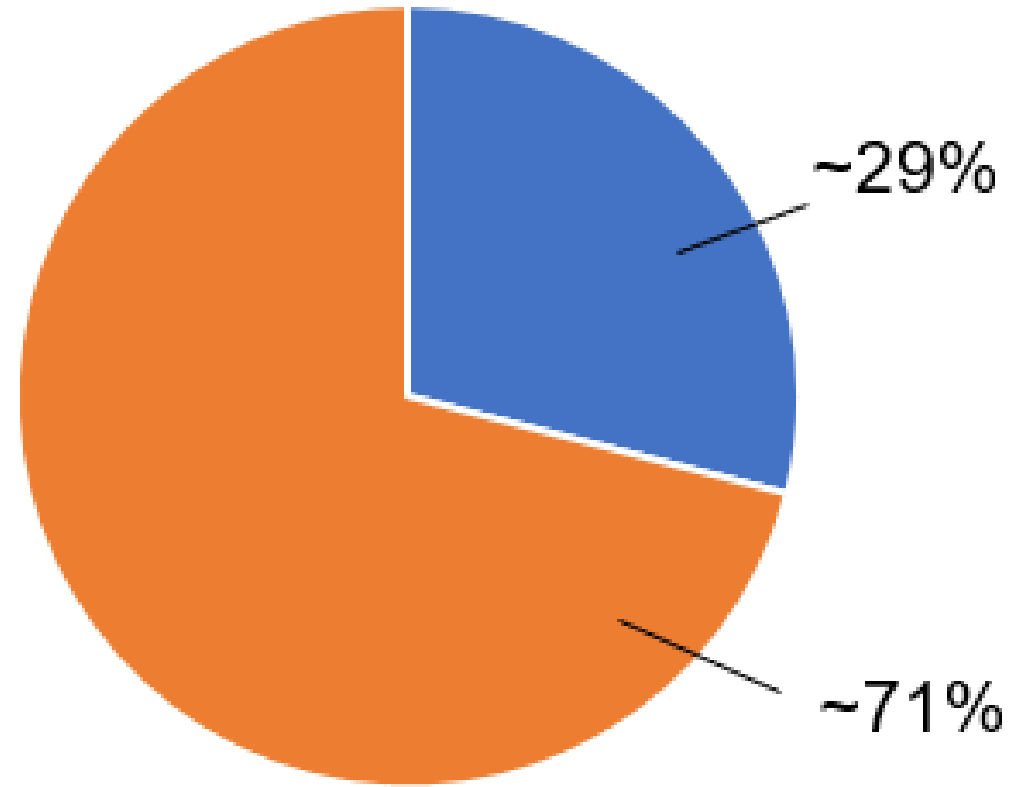
Total planned expenditures: \$277 million





Salt Lake County Council

Capital Project Expenditures



■ Replacement Projects (funded by rates)

■ New Infrastructure (funded by debt)



Repair and Replacement
of Existing Infrastructure
\$81.3 Million



Facility Upgrades (Seismic or
Functional Improvements)
39.4 Million





Salt Lake County Council

New Capacity
Projects
Needed for
Growth
\$152.7 Million

Expand JVWTP



New booster pump station



New storage tanks



Equipment wells



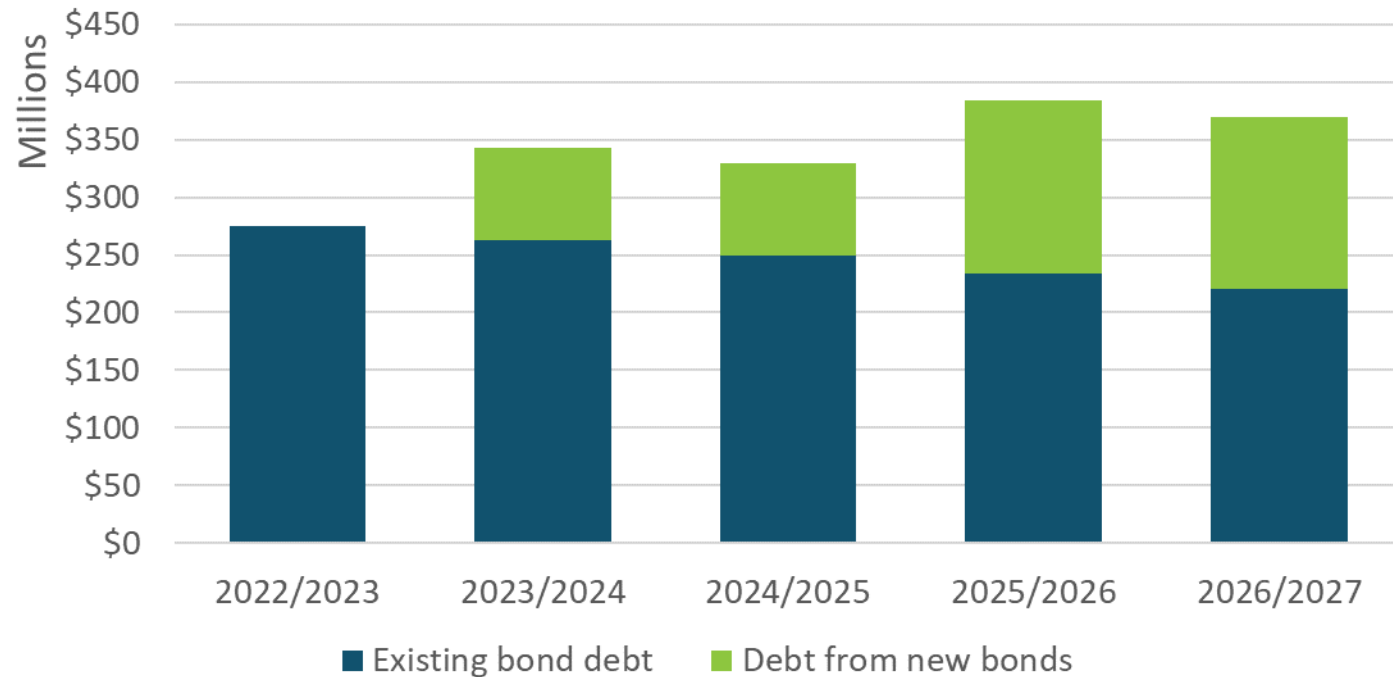


Salt Lake County Council

Total Bonds Payable and Anticipated New Bond Issues

Borrowing to Fund Capital Projects

TOTAL BONDS PAYABLE AT YEAR END



Anticipated New Bond Issues

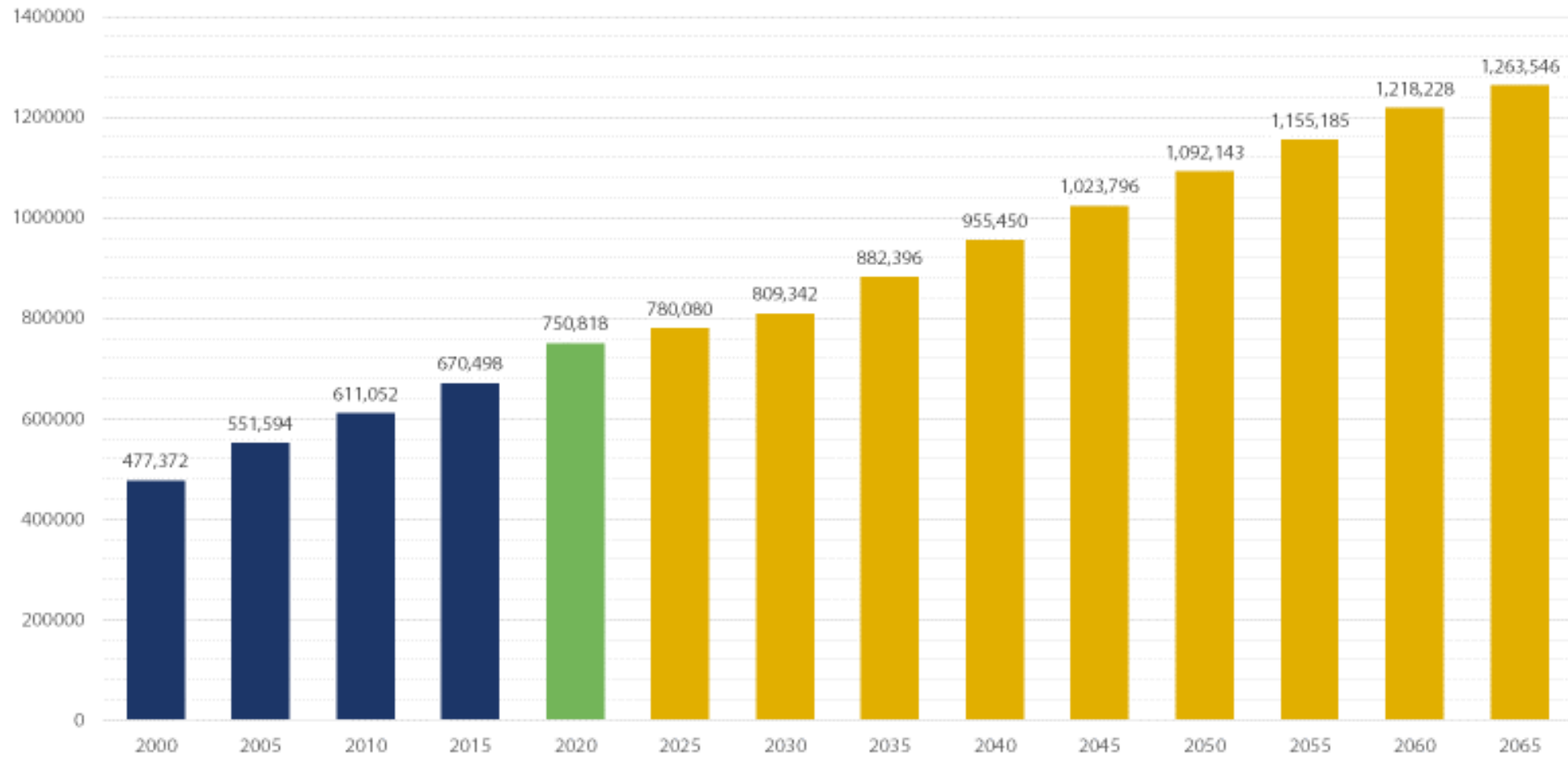
- 2024: \$80 million
- 2026: \$70 million

Water Supply Planning





JWWCD Population History and Projections



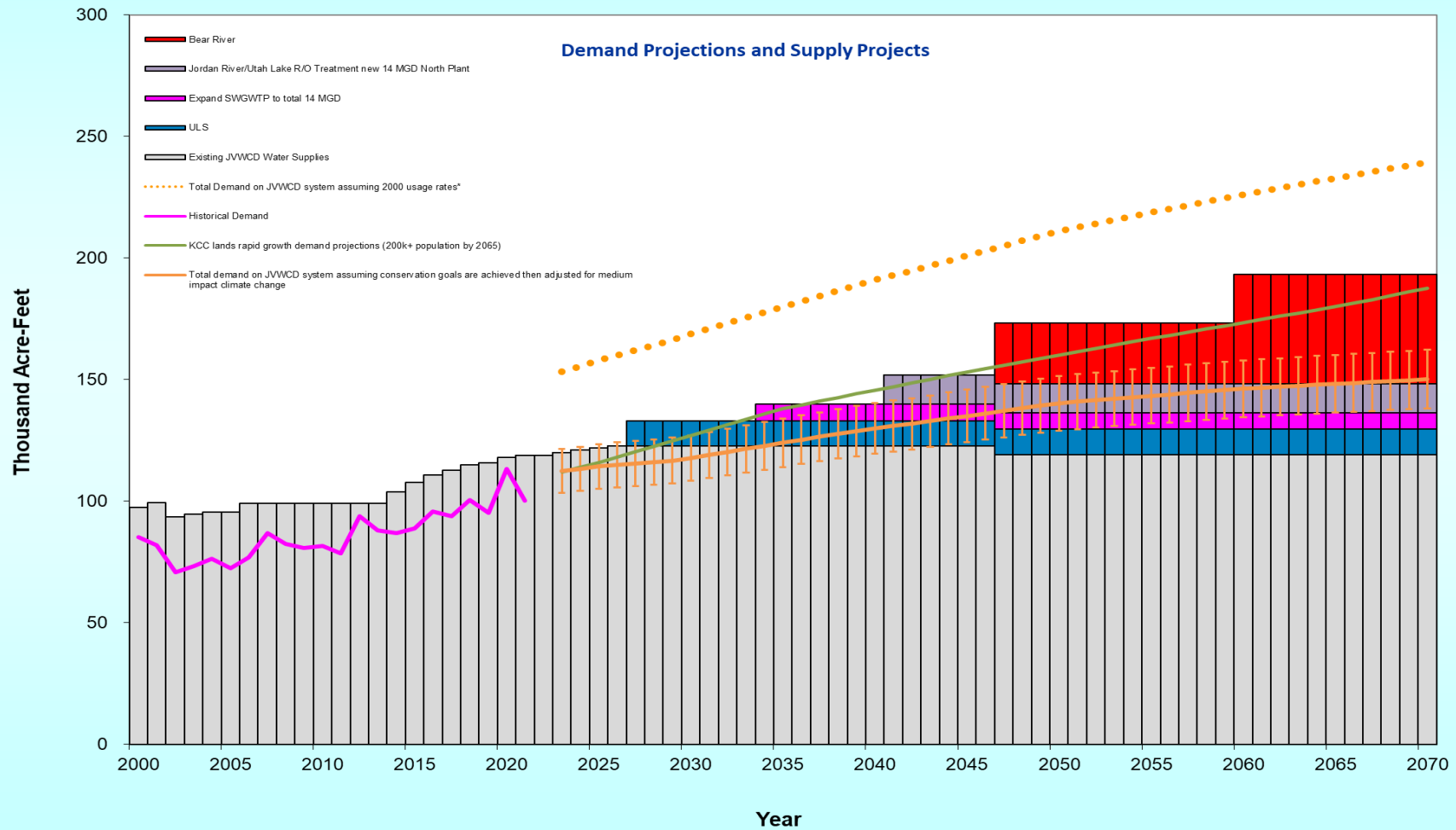
- Areas for Potential Service Area Expansion

It is anticipated the western portion of this projection plan could be annexed into JWCD's service area.





**Jordan Valley Water Conservancy District
Drought Year Water Supply Plan
(using prehistoric tree ring data)
(Updated March 2022)**





JORDAN VALLEY WATER
CONSERVANCY DISTRICT

QUESTIONS

